

DVII 10.

arcade
april 4-6

Thematic Music Cue Sheet

M. J. MINTZ (PATENT)
JULY 31, 1923.

TIM McCOY
in
THE BUSHRANGER

Story by Madeleine Ruthven
Continuity by George C. Mull
Directed by Chet Withey
Compiled by Ernst Luz



A METRO-GOLDWYN-MAYER PICTURE

Length of film 7 reels (5110 feet) Maximum projection time 57 minutes

- 1 AT SCREENING Treachery and Vengeance (Fletcher).....1 Min.

Musical notation for cue 1: Treachery and Vengeance (Fletcher). Tempo: Moderately slow. Copyright 1926 Hawkes & Son.

- 2 (Title) SUSSEX MANOR, ENGLAND Promenade (Rapee-Axt)1 Min.

Musical notation for cue 2: Promenade (Rapee-Axt). Tempo: All.
Copyright 1923 Robbins Music Corp.

- 3 (Action) AFTER TOAST DRUNK Symphonic Color Classic No. 2 (Schoenfeld) (RED).....1 Min.

Musical notation for cue 3: Symphonic Color Classic No. 2 (Schoenfeld) (RED). Tempo: Lento.
Copyright 1925 Music Buyer Corp.

- 4 (Action) MAID COMES TO TAKE GOLDILOCKS TO BED Parade of the Toys (Schertzing).....3/4 Min.

Musical notation for cue 4: Parade of the Toys (Schertzing). Tempo: Marcia.
Copyright 1924 Photo Play Music.

- 5 (Action) CHILD TAKEN OUT OF ROOM Repeat No. 3 (RED)1 1/2 Min.

Musical notation for cue 5: Repeat No. 3 (RED). Tempo: Lento.

- 6 (Title) MAY HEAVEN FORGIVE YOU The Tragic Discovery (Patou)1 Min.

Musical notation for cue 6: The Tragic Discovery (Patou). Tempo: Andte con moto.
Copyright 1927 Hawkes & Son.

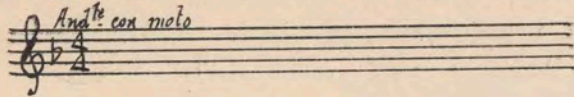
- 7 (Action) FADE TO DUEL Incid. Symphony No. 18-A (Schertzing).....1/2 Min.

Musical notation for cue 7: Incid. Symphony No. 18-A (Schertzing). Tempo: All.
Copyright 1924 Photo Play Music.

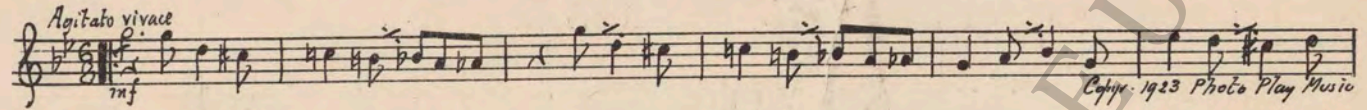
- 8 (Action) END OF DUEL The Tragic Discovery (Patou)1 Min.

Musical notation for cue 8: The Tragic Discovery (Patou). Tempo: Andte con moto.
Copyright 1927 Hawkes & Son.

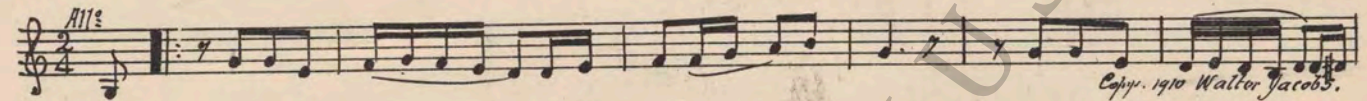
9 (Title) - A YEAR LATER Continue No. 8 1 Min.



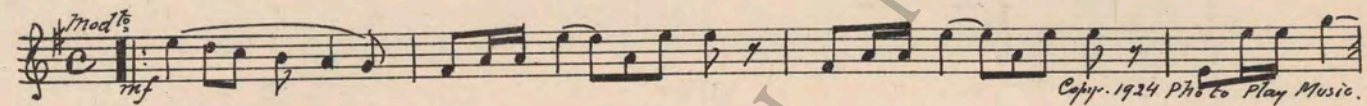
10 (Title) I'VE A PARDON Incid. Symphony No. 7 (Kempinski) 1/2 Min.



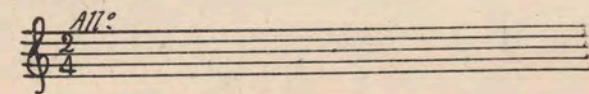
11 (Title) POOR BLIGHTER Irvina (Rolfe) 1/4 Min.



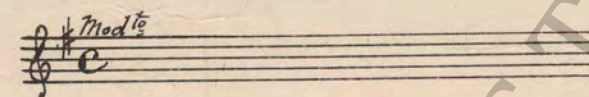
12 (Title) FATE HAD MADE AN OUTLAW Incid. Symphony No. 18-B (Schertzinger) 3/4 Min.



13 (Title) I'M GOING TO FIND Repeat No. 11 "Irvina" 2/4 Min.



14 (Title) MURPHY, I THINK I'LL RIDE OUT Repeat No. 12 "Incid. Symphony No. 18-B" 1 Min.



15 (Title) I'LL BEAT HIM TO IT Presto Galop (Rosey) 1 Min.



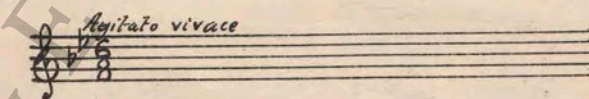
16 (Title) THE COACH FOR BALLARAT Repeat No. 10 "Incid. Symphony No. 7" 1/4 Min.



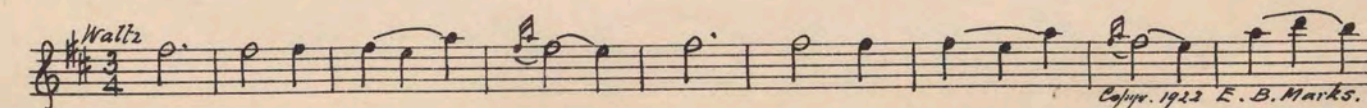
17 (Action) McCOY DISMOUNTS AT COACH Incid. Symphony No. 24 (Kempinski) 1 3/4 Min.



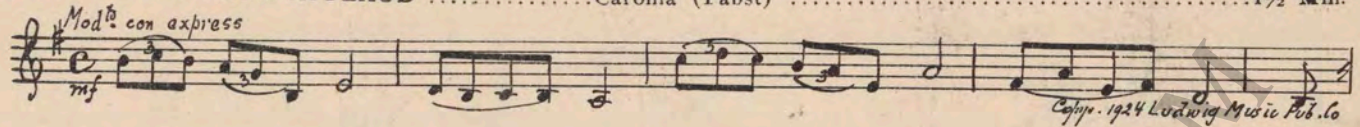
18 (Action) COACH DRIVEN OFF Repeat No. 10 "Incid. Symphony No. 7" 2/4 Min.



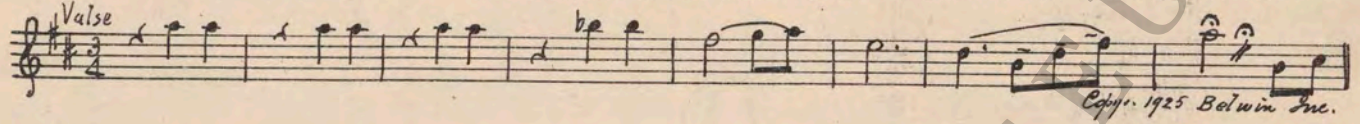
19 (Action) COACH STOPS—SOLDIERS ON COACH Tout a Vous (Tyers) 2 Min.



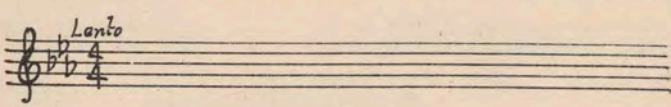
20 (Action) **DANCERS STOP AND APPLAUD** Caroma (Pabst) 1½ Min.

Mod^{to} con aexpress
mf

Copy. 1924 Ludwig Music Pub. Co.

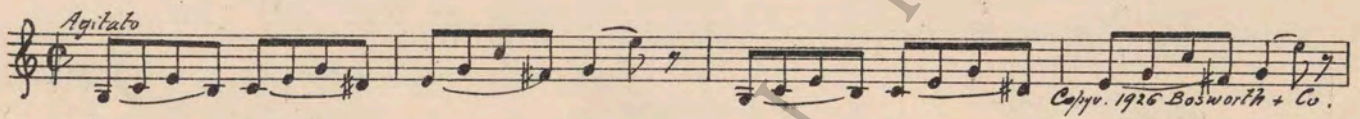
21 (Action) **GIRL MOTIONS HOW BUSHRANGER LOOKED** Quelques Fleurs (Baron) 1 Min.

Valse

Copy. 1925 Belwin Inc.

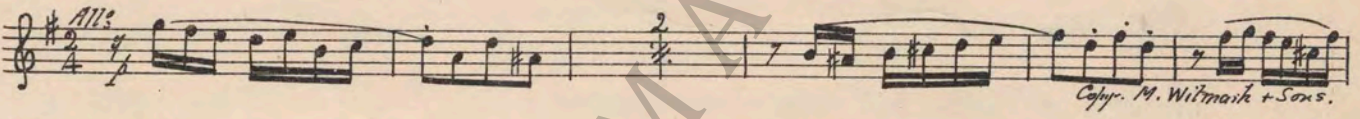
22 (Action) **BROTHER RECOGNIZES BROTHER** Repeat No. 3 (RED) ¾ Min.

Lento


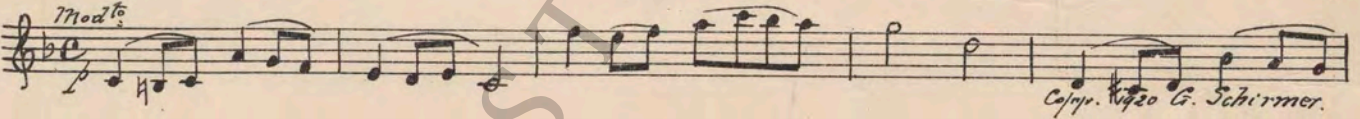
23 (Action) **MCCOY KNOCKS BROTHER DOWN** Hurry No. 1 (Ancliffe) 1½ Min.

Agitato

Copy. 1926 Bosworth + Co.

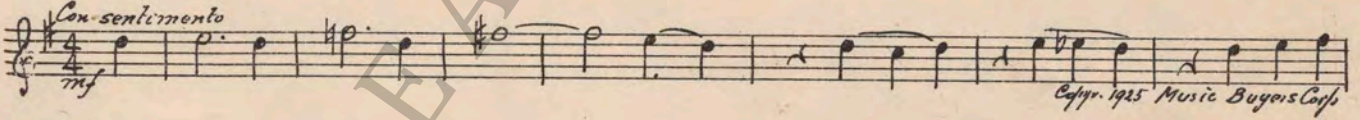
24 (Title) **A THOUSAND POUNDS** Little Fawn (Rosenbaum) 1½ Min.

All^o

Copy. M. Witmark + Sons.

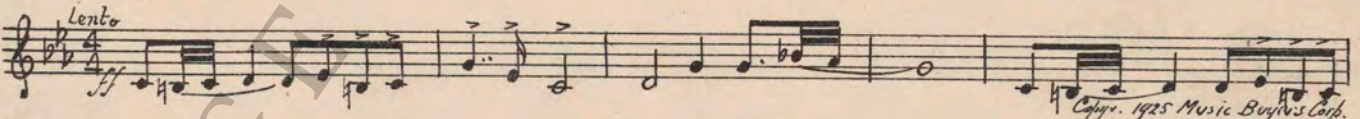
25 (Title) **WHY LUCY** Lotus Flower (McGrath) 1 Min.

Mod^{to}

Copy. 1920 G. Schirmer.

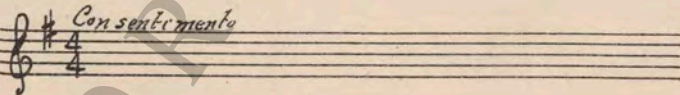
26 (Action) **FADE-OUT OF GIRLS ON BALCONY** Symphonic Color Classic No. 2 (Schoenfeld) (WHITE) ... 1¾ Min.

Con sentimento
mf

Copy. 1925 Music Buyers Corp.

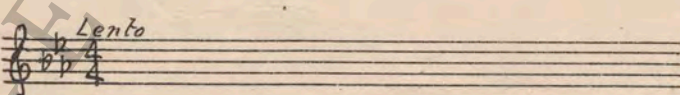
27 (Title) **EDWARD, EDWARD** Symphonic Color Classic No. 2 (Schoenfeld) (RED) ½ Min.

Lento
ff

Copy. 1925 Music Buyers Corp.

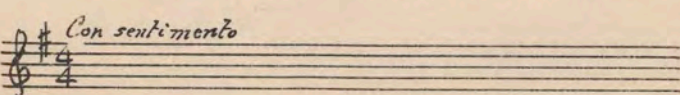
28 (Title) **SIR EDWARD TOLD ME** Repeat No. 26 (WHITE) ½ Min.

Con sentimento


29 (Action) **GIRL ON WITH LOVERS** Repeat No. 27 (RED) 2½ Min.

Lento


30 (Action) **FADE-OUT AFTER PRISONER IS TAKEN AWAY** Repeat No. 26 (WHITE) 2 Min.

Con sentimento


31 (Action) GIRL COMES FROM PRISON—EXTERIOR.....Rache-Vengeance (Porret)3 Min.

32 (Action) PRISON CELLSymphonic Color Classic No. 2 (Schoenfeld) (DK. BLUE)...2 Min.

33 (Action) McCOY DISMOUNTS AT OUTLAW CAMP.....Agitato No. 11 (Lake)1 Min.

34 (Action) PRISONER RELEASED Repeat No. 32 (DK. BLUE) 1/2 Min.

35 (Action) SOLDIERS MOUNT HORSES Repeat No. 33 "Agitato No. 11" 1/2 Min.

36 (Action) McCOY THROWN OUT OF HUT Repeat No. 32 (DK. BLUE)2 Min.

37 (Action) McCOY MOUNTS HORSESix Furlongs (Bub)2 Min.

38 (Action) GIRL BROUGHT BACK TO FATHER.....Afflizione (Gabriel Marie) 1 1/4 Min.

39 (Action) AFTER BOY DIESSymphonic Color Classic No. 2 (Schoenfeld) (WHITE).....1 Min.

THE END

Proper orchestral rest period is Nos. 20 to 29 inclusive.

NOTE: The repetition of numbers in this cue sheet is simplified by the use of the "LUZ" SYMPHONIC COLOR GUIDE, sold by Music Buyers Corporation, 1520 Broadway, New York City. The color suggested for repetition of numbers designates the Mood or Emotion, and is used as a code for such repetitions.

Country of Origin, U. S. A.

Complete orchestrations and single piano parts of each separate number contained hereon, can be purchased from CAMEO MUSIC SERVICE CORPORATION, 315-317 WEST 47TH STREET, NEW YORK CITY.