

M. J. MINTZ (PATENT)
JULY 31, 1923.

WILLIAM FOX FILM PRODUCTION
VICTOR McLAGLEN
in
"CAPTAIN LASH"

Compiled by Michael P. Krueger
The timing is based on speed of 12 minutes per reel

1 AT SCREENING Heave Ho (Copping) 2¾ Min.

All^o

copyr. 1927 Irving Berlin

2 (Title) I HAPPEN TO BE GOING Oh You Beautiful Doll (Ayer) 1¼ Min.

Mod^{to}

Copyr. 1911 J. H. Remick & Co

3 (Action) CAPTAIN LASH SEEN ENTERING GIRL'S ROOM Goofy Gob (McDonald) ¼ Min.

All^o mod^{to}

Copyr. 1928 A. Fassio

4 (Title) THE CAMPBELLS ARE COMING The Campbells Are Coming (Lake) ½ Min.

All^o

Copyr. Carl Fischer

5 (Action) CAPTAIN LASH ESCAPES THRU WINDOW... Repeat No. 3 "Goofy Gob" ¼ Min.

All^o mod^{to}

6 (Action) CAPTAIN LASH AND COCKY SEEN AT BAR... A Hot Time (Beyer) 1¼ Min.

Marsia

Copyr. Carl Fischer

7 (Action) CAPTAIN LASH SITS DOWN AT TABLE.....She Was Just a Sailor's Sweetheart (Burke)..... ¼ Min.

Musical notation for item 7, featuring a treble clef, a key signature of one flat, and a tempo marking of *Mod.^{ro}*. The notation includes a repeat sign and a copyright notice: *COPYR. 1925 LEO. FEIST*.

8 (Action) HUSBAND OF BLONDE GIRL WALKING IN STREETWarriors Bold (Joels) ½ Min.

Musical notation for item 8, featuring a treble clef, a key signature of one flat, and a tempo marking of *Agitato con moto*. The notation includes a repeat sign and a copyright notice: *COPYR. 1927 SONNEMANN*.

9 (Title) THE CAMPBELLS ARE COMIN'Repeat No. 4 "The Campbells Are Coming"..... ¼ Min.

Musical notation for item 9, featuring a treble clef, a key signature of one flat, and a tempo marking of *All.^o* with a dynamic marking of *f*.

10 (Action) HUSBAND SEES CAPTAIN LASH.....Repeat No. 8 "Warriors Bold" ¼ Min.

Musical notation for item 10, featuring a treble clef, a key signature of one flat, and a tempo marking of *Agitato con moto*.

11 (Action) FIGHT STARTSHelp! Help! (Kovacs) 1¼ Min.

Musical notation for item 11, featuring a treble clef, a key signature of one flat, and a tempo marking of *All.^o*. The notation includes dynamic markings of *ff*, *mf*, and *ff*, and a copyright notice: *COPYR. 1927 AMERICAN COMPOSERS*.

12 (Action) CAPTAIN LASH AND MATE IN STREET.....Repeat No. 3 "Goofy Gob" ¼ Min.

Musical notation for item 12, featuring a treble clef, a key signature of one flat, and a tempo marking of *All.^{to} mod.^{to}*.

13 (Action) AUTOMOBILE DRIVES UPAgitato a la Valse (Savino) 1 Min.

Musical notation for item 13, featuring a treble clef, a key signature of one flat, and a tempo marking of *All.^o Agitato*. The notation includes a dynamic marking of *pp* and a copyright notice: *COPYR. 1924 ROBBINS MUSIC CORP.*

14 (Action) HORSE AND CARRIAGE RACING THRU STREETFarcical Allegro (Aborn) ½ Min.

Musical notation for item 14, featuring a treble clef, a key signature of one flat, and a tempo marking of *All.^o Mod.^{to}*. The notation includes a copyright notice: *COPYR. 1923 BELWIN INC.*

15 (Title) I—I'M SORRYTHEME: To Know You Is To Love You (Henderson)..... 1¼ Min.

Musical notation for item 15, featuring a treble clef, a key signature of one flat, and a tempo marking of *SONG STYLE*. The notation includes a copyright notice: *COPYR. 1928 DE SYLVA, BROWN & HENDERSON*.

16 (Action) SHIP SEEN IN OCEAN A Cryptic Sea Tale (Sibelius) 1¼ Min.

Musical notation for item 16, featuring a treble clef, a key signature of one flat, and a tempo marking of *Adagio*. The notation includes various rhythmic values and dynamics such as *pp*. Copyright notice: *COPYR. 1925 SCHLESINGER*.

17 (Title) FAR ABOVE THE SEETHING En Visite (McDonald) 1 Min.

Musical notation for item 17, featuring a treble clef, a key signature of two sharps, and a tempo marking of *All.^o*. Copyright notice: *COPYR. 1927 CINEMUSIC SERVICE*.

18 (Action) CHANGE OF SCENE BACK TO BOILER ROOM Chantyman's Song from "On the Briny" (Carr) 1¼ Min.

Musical notation for item 18, featuring a treble clef, a key signature of two sharps, and a tempo marking of *All.^o*. Copyright notice: *COPYR. 1925 EDW. B. MARKS*.

19 (Action) INSPECTION PARTY SEEN Cheero (Finck) 1¼ Min.

Musical notation for item 19, featuring a treble clef, a key signature of two sharps, and a tempo marking of *All.^o*. Copyright notice: *COPYR. 1915 HAWKES & SAN*.

20 (Action) MATE SEES GIRL'S LEGS Repeat No. 3 "Goofy Gob" ½ Min.

Musical notation for item 20, featuring a treble clef, a key signature of one flat, and a tempo marking of *mod^{to}*. Copyright notice: *COPYR. 1915 HAWKES & SAN*.

21 (Action) CAPTAIN LASH SEES GIRL Repeat Theme No. 15 ½ Min.

Musical notation for item 21, featuring a treble clef, a key signature of one flat, and a tempo marking of *mod^{to}*. Copyright notice: *COPYR. 1915 HAWKES & SAN*.

22 (Title) STAND UP YOU SLACKER Fire and Destruction (Becce) 1¼ Min.

Musical notation for item 22, featuring a treble clef, a key signature of one flat, and a tempo marking of *All.^o*. Copyright notice: *COPYR. 1936 BELWINKING*.

23 (Action) CHANGE OF SCENE TO HOSPITAL Pleureuse (Brunelli) 1¼ Min.

Musical notation for item 23, featuring a treble clef, a key signature of one flat, and a tempo marking of *Lento*. Copyright notice: *COPYR. SONNEMANN*.

24 (Title) I'LL ALWAYS REMEMBER Repeat Theme No. 15 ½ Min.

Musical notation for item 24, featuring a treble clef, a key signature of one flat, and a tempo marking of *mod^{to}*. Copyright notice: *COPYR. 1915 HAWKES & SAN*.

25 (Action) INSERT OF CHIEF OFFICER'S LOG Secret of the Sea (Zamecnik) ½ Min.

Musical notation for item 25, featuring a treble clef, a key signature of one flat, and a tempo marking of *mod^{to} marcato*. Copyright notice: *COPYR 1911 SAM FOX PUB.*

26 (Title) SHE'S A REAL LADY Repeat Theme No. 15 1¼ Min.

Musical notation for item 26, featuring a treble clef, a key signature of one flat, and a tempo marking of *mod^{to}*. Copyright notice: *COPYR. 1915 HAWKES & SAN*.

- 27 (Title) **THREE DECKS UP** Hidden Charms (Mosay) 2¾ Min.
With grace

 Musical notation for 'THREE DECKS UP' in treble clef, 4/4 time, key of B-flat major. It begins with a dynamic marking of *mf* and includes a copyright notice: *COPYR. 1928 SANDERS-WEISS*.
- 28 (Title) **AND WOMEN WERE MADE TO FASCINATE**.. Agitated Appassionato (Kilenyi) ¾ Min.
Appass.

 Musical notation for 'AND WOMEN WERE MADE TO FASCINATE' in treble clef, 3/4 time, key of B-flat major. It begins with a dynamic marking of *mf* and includes a copyright notice: *COPYR. 1927 ROBBINS MUSIC CORP.*
- 29 (Action) **GIRL LEAVES ROOM** Incid. Symphony No. 6 (Kempinski) 1 Min.
Andte

 Musical notation for 'GIRL LEAVES ROOM' in treble clef, 4/4 time, key of B-flat major. It begins with a dynamic marking of *f* and includes a copyright notice: *COPYR. 1922 PHOTOPLAY MUSIC*.
- 30 (Action) **CHANGE OF SCENE BACK TO CAPTAIN LASH** Repeat No. 3 "Goofy Gob" ½ Min.
All mod to

 Musical notation for 'CHANGE OF SCENE BACK TO CAPTAIN LASH' in treble clef, 4/4 time, key of B-flat major. It begins with a dynamic marking of *f*.
- 31 (Title) **PLAY SOMETHIN' WITH MORE SOUL**.....THEME: To Know You is to Love You (Henderson)..... ½ Min.
Song style

 Musical notation for 'PLAY SOMETHIN' WITH MORE SOUL' in treble clef, 4/4 time, key of B-flat major. It begins with a dynamic marking of *f* and includes a copyright notice: *COPYR. 1928 DE SYLVA, BROWN & HENDERSON*.
- 32 (Action) **ATTENDANT ENTERS WITH BASKET OF FRUIT** Repeat No. 3 "Goofy Gob" 1 Min.
All mod to

 Musical notation for 'ATTENDANT ENTERS WITH BASKET OF FRUIT' in treble clef, 4/4 time, key of B-flat major. It begins with a dynamic marking of *f*.
- 33 (Action) **GIRL ENTERS HOSPITAL** Repeat Theme No. 15 ¼ Min.
Song style

 Musical notation for 'GIRL ENTERS HOSPITAL' in treble clef, 4/4 time, key of B-flat major. It begins with a dynamic marking of *f*.
- 34 (Title) **I CAN'T EXPLAIN NOW** A Mysterious Fable (Juon) 1 Min.
All mod to

 Musical notation for 'I CAN'T EXPLAIN NOW' in treble clef, 4/4 time, key of B-flat major. It begins with a dynamic marking of *p* and includes a copyright notice: *COPYR. 1936 BELWIN INC.*
- 35 (Action) **CHANGE OF SCENE TO CAPTAIN AND JEWEL COLLECTOR** A Contrapuntal Misterioso (Schad) ½ Min.
Con mistero

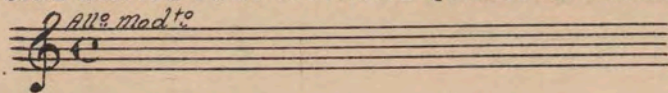
 Musical notation for 'CHANGE OF SCENE TO CAPTAIN AND JEWEL COLLECTOR' in treble clef, 4/4 time, key of B-flat major. It begins with a dynamic marking of *pp* and includes a copyright notice: *COPYR. 1928 BELWIN INC.*
- 36 (Title) **SINGAPORE** In Pekin (Ansell) ½ Min.
All mod to

 Musical notation for 'SINGAPORE' in treble clef, 4/4 time, key of B-flat major. It begins with a dynamic marking of *f* and includes a copyright notice: *COPYR. 1923 HAWKES & SON*.
- 37 (Title) **THE PORT MATRON WISHES** Second Misterioso a la Valse (Savino) 1¼ Min.
All mod to

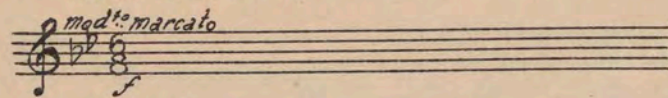
 Musical notation for 'THE PORT MATRON WISHES' in treble clef, 4/4 time, key of B-flat major. It begins with a dynamic marking of *f* and includes a copyright notice: *COPYR. 1925 ROBBINS MUSIC CORP.*
- 38 (Action) **CHANGE OF SCENE TO CAPTAIN LASH AND MATE** Repeat No. 25 "Secret of the Sea" 1¼ Min.
mod to marcato

 Musical notation for 'CHANGE OF SCENE TO CAPTAIN LASH AND MATE' in treble clef, 4/4 time, key of B-flat major. It begins with a dynamic marking of *f*.

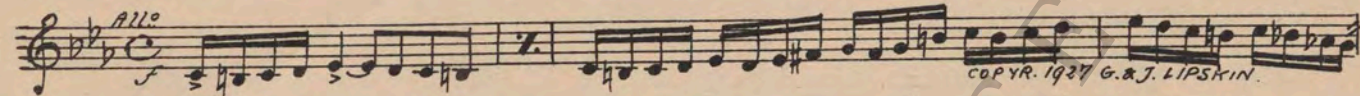
39 (Action) GIRL LEAVES PORT MATRON'S QUARTERS .. Repeat No. 36 "In Pekin" ¾ Min.



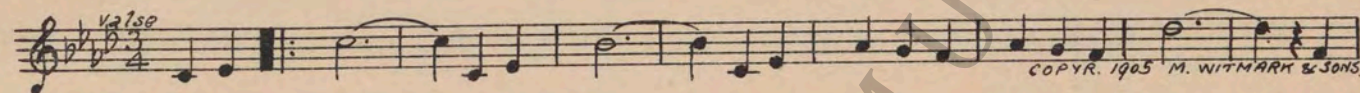
40 (Action) CHANGE OF SCENE BACK TO CAPTAIN LASH AND MATE .. Repeat No. 25 "Secret of the Sea" 1¼ Min.



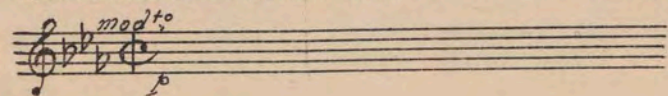
41 (Title) DON'T YOU WANT ME TO GO Eruption (Dubensky) ¾ Min.



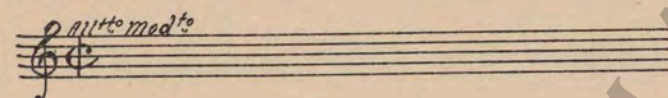
42 (Action) CAPTAIN LASH LEAVES CABIN He's Me Pal (Edwards) ¾ Min.



43 (Action) GIRL GREET'S CAPTAIN LASH .. Repeat No. 7 "She Was Just a Sailor's Sweetheart" 1¼ Min.



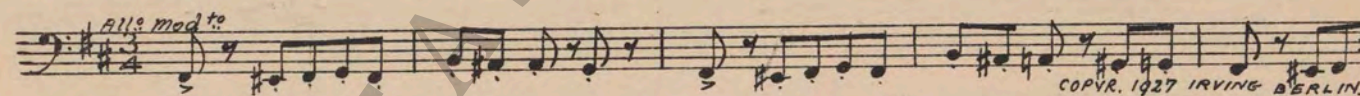
44 (Action) GIRL SEES MATE Repeat No. 3 "Goofy Gob" ½ Min.



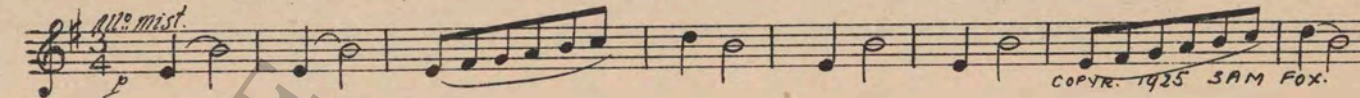
45 (Title) IT'S ALL YOUR FAULT Comic Conversation (Aborn) 1 Min.



46 (Title) E'S FLYIN' HIGH NOW Sobbing (Baron) ½ Min.



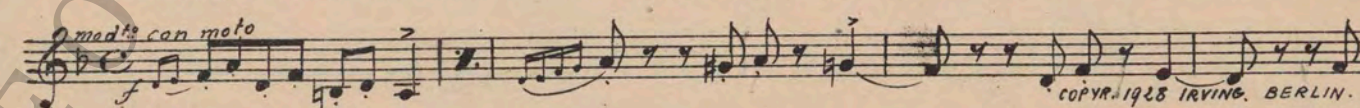
47 (Action) CAPTAIN LASH SEEN A Mysterious Event (Zamecnik) 1 Min.



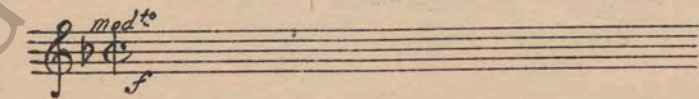
48 (Action) CHANGE OF SCENE BACK TO MATE AND BABE AT TABLE What a Fool I Was (Gusman) ¾ Min.

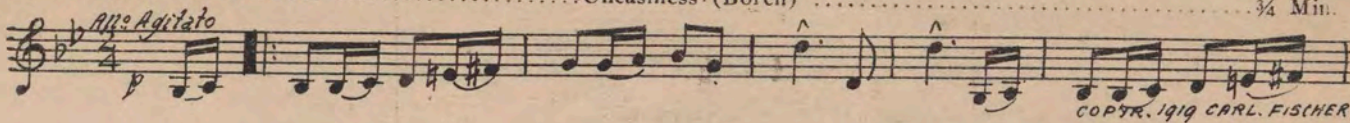
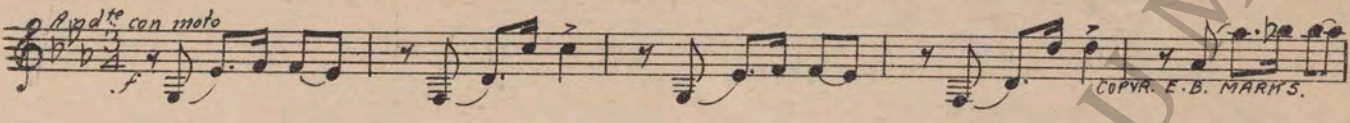
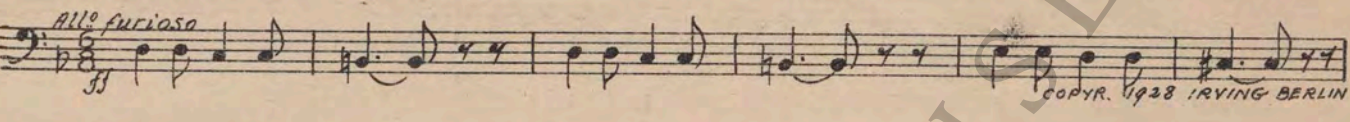
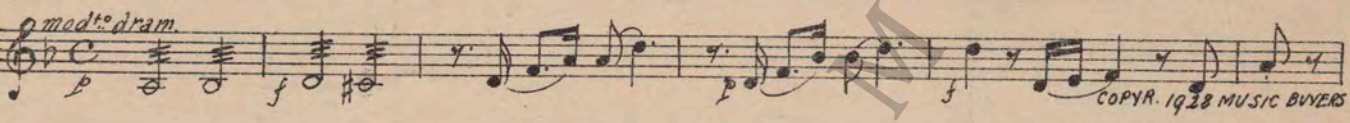
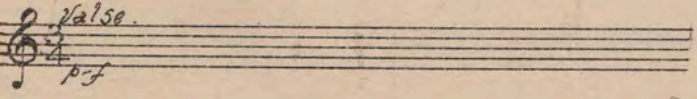
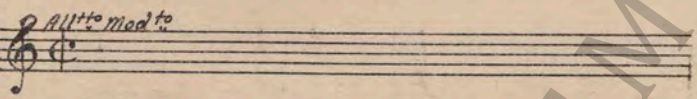
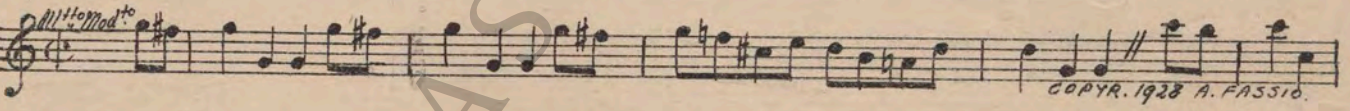
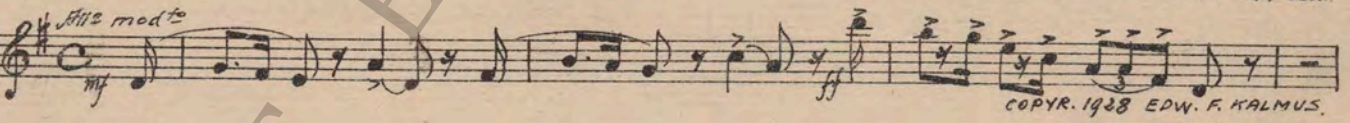
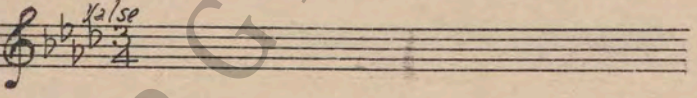
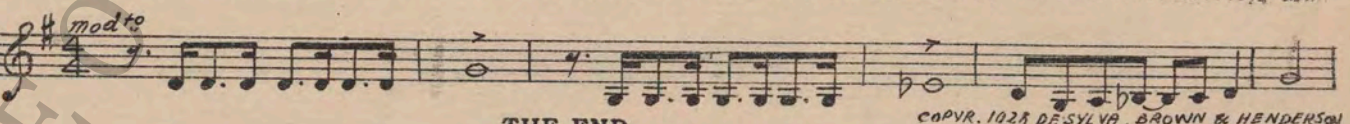


49 (Action) CHANGE OF SCENE TO BANDITS' APARTMENT Stalking the Prey (Kempinski) 1 Min.



50 (Action) CAPTAIN LASH VISITS GIRL Repeat Theme No. 15 1 Min.



- 51 (Action) **GIRL OPENS ENVELOPE** Uneasiness (Borch) ¾ Min.

- 52 (Title) **COME ACROSS WITH THOSE RUBIES** Hell Hath No Fury (Carr) ¼ Min.

- 53 (Action) **FIGHT STARTS** Mortal Combat (Lowitz) 1¼ Min.

- 54 (Action) **OFFICERS ENTER APARTMENT** Symphonic Incidentals No. 19 (Marquardt) 1 Min.

- 55 (Title) **BETTER 'AVE ANOTHER** Repeat No. 48 "What a Fool I Was" ½ Min.

- 56 (Action) **MATE STARTS TO PLAY CONCERTINA** Repeat No. 3 "Goofy Gob" 1 Min.

- 57 (Action) **OFFICERS SEEN IN STREET** Short Pause ¾ Min.
 SEGUE: Goofy Gob (McDonald)

- 58 (Title) **WOT'S UP? A FIGHT?** Suite Domestica No. 1 (Riesefeld) 1¼ Min.

- 59 (Action) **OFFICERS LEAVE** Repeat No. 42 "He's Me Pal" ¾ Min.

- 60 (Title) **GO ON AN' CHEER 'ER UP** That's How I Feel About You (Davis) 1¼ Min.


THE END

Printed in U. S. A.

Complete orchestrations and single piano parts of each separate number contained hereon, can be purchased from CAMEO MUSIC SERVICE CORPORATION, 315-317 WEST 47TH STREET, NEW YORK CITY.

95:1669:1