

195

Thematic Music Cue Sheet

M. J. MINTZ (PATENT) JULY 31, 1923.

ADOLPH ZUKOR and JESSE L. LASKY

present

POLA NEGRI

in

A SIDNEY OLCOTT PRODUCTION "THE CHARMER"

From the novel "Mariposa" by Henry Baerlein Screen play by Sada Cowan Music compiled by James C. Bradford

Footage 6076 feet

A Paramount Picture



1 AT SCREENING El Irresistible (Logatti) 2 1/4 Min.

Musical notation for 'El Irresistible' with tempo marking 'Tango' and copyright 'Copp. 1913, by G. Schirmer'.

2 (Title) PABLO The Pearl of Madrid (Bachmann) 1 Min.

Musical notation for 'The Pearl of Madrid' with tempo marking 'Alto Mod.to' and copyright 'Copp. by Carl Fischer'.

3 (Action) MARIPOSA STARTS TO DANCE Pamplone (Gauwin) 2 1/4 Min.

Musical notation for 'Pamplone' with tempo marking 'Vivace' and copyright 'Copp. 1910, by Carl Fischer'.

NOTE: Play with guitars and castanets; "PP" for exterior scenes.

4 (Action) MARIPOSA APPEARS IN WINDOW THEME: The Spanish Dancer (Shauer) 2 1/4 Min.

Musical notation for 'The Spanish Dancer' with tempo marking 'Mod.to' and copyright 'Copp. 1923, by Globe Music Co.'.

5 (Action) MARIPOSA WALKS TOWARD AUTO Dainty Damsel (Baron) 1 1/2 Min.

Musical notation for 'Dainty Damsel' with tempo marking 'Alto Mod.to' and copyright 'Copp. 1922, by Melrose, Inc.'.

6 (Title) NIGHT FINDS THE AMERICANS La Paloma (Yradier) 3/4 Min.

Musical notation for 'La Paloma' with tempo marking 'Alto Mod.to' and copyright 'Copp. by Emil Ascher'.

NOTE: Guitar effects.

7 (Title) SIGNOR SPROTTI Spanish "From Foreign Lands" (Moszkowski) 1 1/2 Min.

Musical notation for 'Spanish "From Foreign Lands"' with tempo marking 'Vivace' and copyright 'Copp. by Carl Fischer'.

NOTE: Play with guitars and castanets

8 (Action) **DANCERS FINISH—MARIPOSA STARTS** España Waltz (Waldteufel) 1¼ Min.

Con f. solo
ff

Copy. by Carl Fischer

9 (Action) **MARIPOSA FINISHES DANCE** Guitarre (Moszkowski) 2½ Min.

All.º comodo
mp

Copy. 1920, by G. Schirmer, Inc.

10 (Action) **BAYNE RETURNS FOR CAP** Igualada (Zuera) 1¾ Min.

Tempo Habanera

Copy. 1922, by Boston Music Co.

11 (Title) **AT THE HOME OF MARIPOSA** Spanish Dance (Sarasate) 1¼ Min.

And.º no
mf

Copy. 1922, by Carl Fischer.

12 (Title) **OUTWARD BOUND** Hearts and Flowers (Tobani) 1½ Min.

Mod.º
p

Copy. by Carl Fischer

13 (Title) **BUT AT LAST** National Emblem March (Bagley) 1 Min.

Mercia

Copy. by Walter Jacobs

14 (Action) **INSERT—HOTEL BRIGGS** Piccolo Pic (Slater) 1½ Min.

Mod.º
p

Copy. 1918, by Carl Fischer

15 (Title) **IN RALPH BAYNES' APARTMENT** Rendez-vous d'Amour (Edwards) 1½ Min.

All.º scherz.

Copy. 1921, by G. Schirmer, Inc.

16 (Action) **INSERT—BILLBOARD—"THIRD ANNUAL TEMPLE REVIEW"** The Bayaderes (Popy) 1½ Min.

Mod.º

Copy. 1922, by G. Schirmer

17 (Action) **MARIPOSA CARRIED IN BY SLAVE** By the Ganges (Popy) ½ Min.

Lento

Copy. 1922, by G. Schirmer

18 (Action) **SHE STARTS TO DANCE** Dance of the Demons (Rybnar) 4 Min.

All.º

Copy. 1915, Carl Fischer.

19 (Title) AFTER THE LAST CURTAIN Serenade (Harris) 2 Min.

Musical notation for item 19. Treble clef, key signature of one sharp (F#), common time (C). Tempo marking: *Mod to con moto*. Dynamics: *mf*. Copyright: *copyr 1922 by Sydney P. Harris.*

20 (Title) LATER Charmeuse (Baron) 1 Min.

Musical notation for item 20. Treble clef, key signature of one sharp (F#), 3/4 time. Tempo marking: *Andte*. Copyright: *copyr 1921 by Baldwin Inc.*

21 (Action) INSERT-BILLBOARD First Call of Spring (Smith) 1/2 Min.

Musical notation for item 21. Treble clef, key signature of one sharp (F#), 2/4 time. Tempo marking: *Allo qiazioso*. Dynamics: *mf*. Copyright: *copyr 1924 by Baldwin Inc.*

22 (Title) ABOUT THIS TIME Consolation No. 3 (Liszt) 1 1/2 Min.

Musical notation for item 22. Treble clef, key signature of two flats (Bb, Eb), 4/4 time. Tempo marking: *Lento Placido*. Copyright: *copyr 1925 by G. Schirmer.*

23 (Action) MARIPOSA REHEARSING Chiquita (Barnard) 1 Min.

Musical notation for item 23. Treble clef, key signature of one sharp (F#), 2/4 time. Tempo marking: *Polasa*. Copyright: *copyr 1912 by Carl Fischer.*

24 (Action) DAN ENTERS Repeat Theme No. 4 1 1/2 Min.

Musical notation for item 24. Treble clef, key signature of one sharp (F#), 4/4 time. Tempo marking: *Mod to*. The notation shows a series of empty staves.

25 (Title) THE LONG ISLAND HOME Vanity-Caprice (Jackson) 1 1/2 Min.

Musical notation for item 25. Treble clef, key signature of one sharp (F#), common time (C). Tempo marking: *All non troppo*. Copyright: *copyr 1911 by G. Schirmer.*

26 (Title) TELL ME, WHERE IS MR. BAYNE The Awakening (Zamecnik) 2 Min.

Musical notation for item 26. Treble clef, key signature of one sharp (F#), common time (C). Tempo marking: *Appassunato*. Dynamics: *mf*. Copyright: *copyr 1924 by Sam Fox Pub Co.*

27 (Action) FLASH-BACK TO MOTHER DANCING L'Estudiantina (Waldteufel) 3/4 Min.

Musical notation for item 27. Treble clef, key signature of one sharp (F#), 2/4 time. Tempo marking: *Deciso vrg*. Copyright: *copyr 1912 by Carl Fischer.*

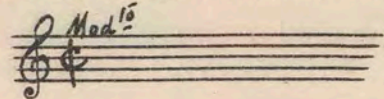
28 (Action) MARIPOSA ENTERS ROOM Broken Hearts (Somerville) 2 Min.

Musical notation for item 28. Treble clef, key signature of one sharp (F#), 4/4 time. Tempo marking: *Andte*. Dynamics: *mf*. Copyright: *copyr 1924 by Hawkes Bros.*

29 (Title) I'M SORRY YOU DIDN'T LISTEN TO ME Moment Gai (Leigh) 1 1/2 Min.

Musical notation for item 29. Treble clef, key signature of one sharp (F#), 2/4 time. Tempo marking: *Allo*. Dynamics: *mf*. Copyright: *copyr 1923 by Walter Jacobs.*

30 (Action) DAN AT DOOR Repeat Theme No. 4 1 Min.



31 (Title) A FEW DAYS LATER Whispering Willows (Herbert) 1½ Min.

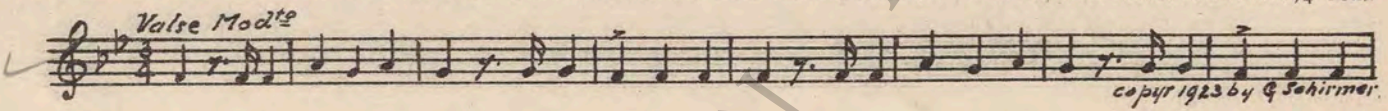


32 (Title) YOU MUSN'T GO THERE Rhapsody Appassionata (Ketelbey) 3 Min.



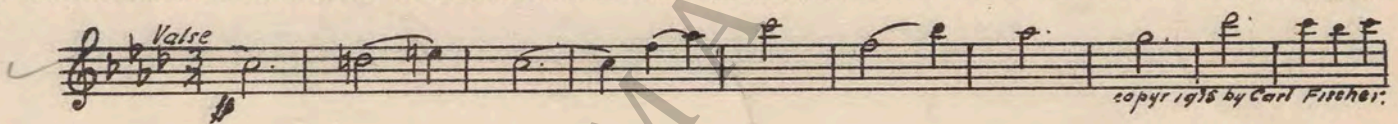
NOTE: Play vey "P" for telephone conversation with Beth.

33 (Action) ENTRANCE TO APARTMENT HOUSE Misterioso alla Valse (Savino) ¾ Min.



NOTE: Play "PP" strings only, and rather slowly.

34 (Action) MARIPOSA AND BAYNE IN APARTMENT... Estellita (Herbert) 3 Min.

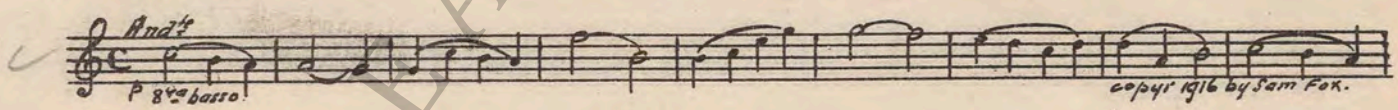


35 (Action) BETH AT DOOR Fleeting Shadows (Weiss) 3 Min.



NOTE: Play "PP" strings only, and rather slowly.

36 (Action) HUSBAND ENTERS ROOM Meditation (Williams) 2 Min.



37 (Title) WHAT ARE YOU DOING HERE La Mer Sombre (Fosse) 1½ Min.



NOTE: Start "FF" and diminish as Mariposa speaks to Dan.

38 (Action) MARIPOSA WALKS TOWARD DAN THEME: The Spanish Dancer (Shauer) 1½ Min.



Country of Origin, U. S. A.

THE END

Complete Orchestrations and single parts of all compositions contained herein can be purchased from CAMEO MUSIC SERVICE CORPORATION, 112-118 West 44th Street, New York City