



M. J. MINTZ (PATENT)
JULY 31, 1923.

CARL LAEMMLE

presents

"THE COHENS AND KELLYS"

A Harry Pollard Production

with

George Sidney, Charles Murray and Vera Gordon

Adopted from the play "Two Blocks Away" by Aaron Hossman

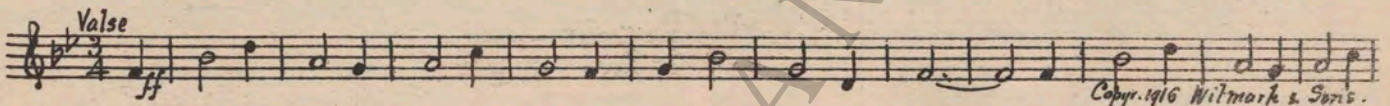
Music compiled by James C. Bradford

UNIVERSAL—JEWEL

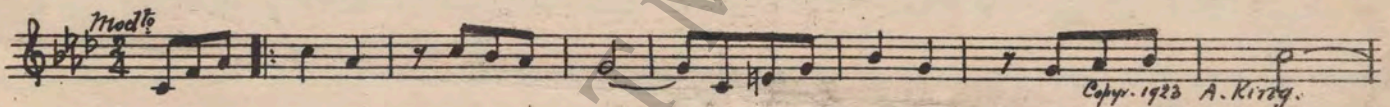
- 1 AT SCREENING Has Anybody Here Seen Kelly.....1¼ Min.



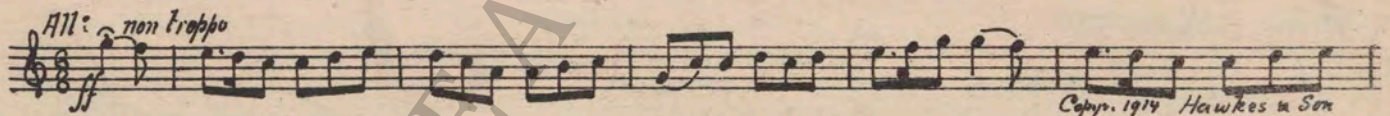
- 2 (Title) NEW YORK CITY The Streets of New York from "Red Mill" (Herbert).....1 Min.



- 3 (Title) COMPETITION WAS Oi di Liebe (King)1¼ Min.



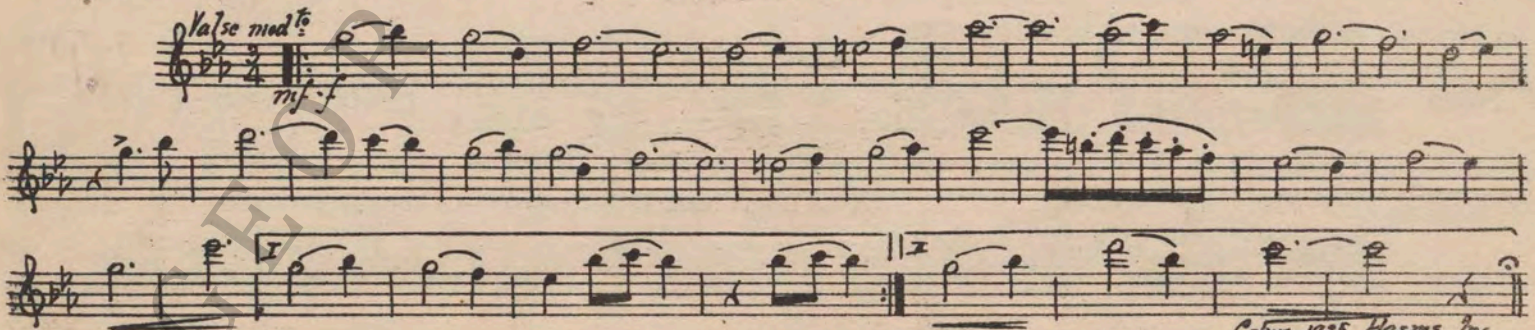
- 4 (Title) PATRICK KELLY Repeat No. 1 "Has Anybody Here Seen Kelly".....1 Min.
- 5 (Action) ARGUMENT STARTS IN HALLWAY..... No. 3 "Three Irish Pictures" (Ansell).....3 Min.



- 6 (Title) TROUBLES, TROUBLES Chanukkak "King Solomon" (Tobani).....1 Min.



- 7 (Action) NANNIE AND TERENCE ALONE THEME: Kosher Kitty Kelly (De Costa).....2 Min.



- 8 (Action) PAT AND BOY AT TABLE Repeat No. 5 "Three Irish Pictures"¾ Min.

9 (Action) SIGN—MAIN ENTRANCE Mazel Tof (Ascher) 3 Min.

Handwritten 'L' in the left margin. Musical notation for 'SIGN—MAIN ENTRANCE' with tempo marking 'Allegro' and dynamic 'ff'. Copyright: 1914 E. Ascher.

10 (Title) FOR WHY SHOULD YOU EAT MY HEART.. Frailach No. 5 (Ascher) 2¼ Min.

Handwritten '9' in the left margin. Musical notation for 'FOR WHY SHOULD YOU EAT MY HEART..' with tempo marking 'Allegro' and dynamic 'f'. Copyright: 1915 E. Ascher.

11 (Title) SO! Repeat No. 9 "Mazel Tof" 2 Min.

12 (Title) EVENING FINDS Sweet Rosie O'Grady from "Old Timers" (Lake) (Direct Cue) 1½ Min.

Handwritten 'L' in the left margin. Musical notation for 'EVENING FINDS' with tempo marking 'Waltz' and dynamic 'p'. Copyright: 1917 Carl Fischer.

13 (Action) NANNIE AND TERENCE AT DOOR Scherzando Hurry (Frey) 1¼ Min.

Handwritten '9' in the left margin. Musical notation for 'NANNIE AND TERENCE AT DOOR' with tempo marking 'Scherzando' and dynamic 'mf'. Copyright: 1925 Robbins-Engel.

14 (Title) I WOULD RATHER MINE NANNIE Gigue (Gretry-Mottl) 1¼ Min.

Handwritten 'L' in the left margin. Musical notation for 'I WOULD RATHER MINE NANNIE' with tempo marking 'Allegro' and dynamic 'mf'. Copyright: 1915 Carl Fischer.

15 (Action) COLLECTOR ENTERS Hebrew Love Song (Korsakow) 3 Min.

Handwritten '9' in the left margin. Musical notation for 'COLLECTOR ENTERS' with tempo marking 'Adagio' and dynamic 'mf'. Copyright: 1917 G. Schirmer.

16 (Title) YOU'VE BEEN DODGING ME ALL DAY..... Kosatzki (Fleischmann) 2¼ Min.

Handwritten '9' in the left margin. Musical notation for 'YOU'VE BEEN DODGING ME ALL DAY.....' with tempo marking 'Allegro' and dynamic 'mf'. Copyright: 1917 G. Schirmer.

17 (Title) SIX MONTHS Oh Joseph (Fall) 1¾ Min.

Handwritten 'L' in the left margin. Musical notation for 'SIX MONTHS' with tempo marking 'Moderato' and dynamic 'mf-f'. Copyright: 1924 Harms Inc.

18 (Action) TERENCE AT GATE A Kiss in the Moonlight (Gaskill) 2 Min.

Handwritten 'L' in the left margin. Musical notation for 'TERENCE AT GATE' with tempo marking 'Moderato' and dynamic 'mf'. Copyright: 1925 Harms Inc.

NOTE: Play "P" very sweetly.

19 (Action) NANNIE AND TERENCE AT GATE..... Repeat Theme No. 7..... 1½ Min.

NOTE: Play "PP" con sordini strings only.

20 (Action) NANNIE TURNS TERENCE'S HEAD..... Rock-a-Bye Baby (Luz) 1 Min.

Handwritten 'L' in the left margin. Musical notation for 'NANNIE TURNS TERENCE'S HEAD.....' with tempo marking 'Andante' and dynamic 'pp'. Copyright: 1922 Photo Play Music.

NOTE: Play "PP" con sordini.

21 (Action) PAT PLAYING VIOLIN Come Back to Erin from "Emerald Isle" (Langley)..... 1¼ Min.

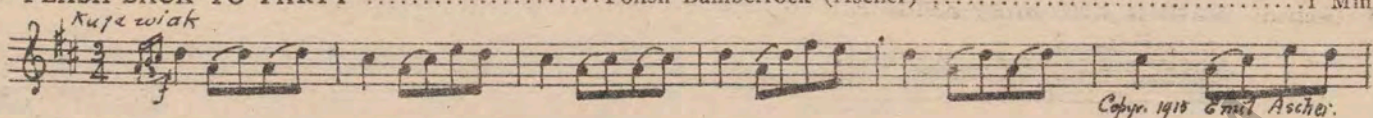
Handwritten 'L' in the left margin. Musical notation for 'PAT PLAYING VIOLIN' with tempo marking 'Moderato' and dynamic 'mf'. Copyright: 1918 G. Schirmer.

NOTE: Play as Violin Solo.

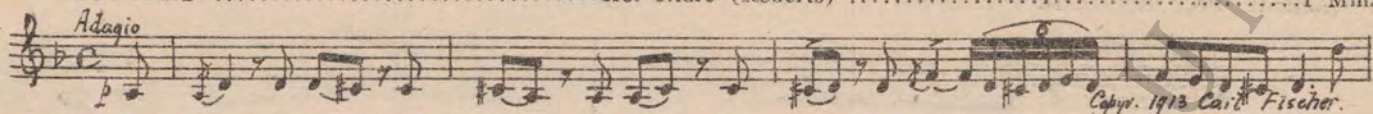
22 (Title) WE'VE BEEN HARD ON THE COHENS..... Mother Machree (Olcott) ¾ Min.

Handwritten '9' in the left margin. Musical notation for 'WE'VE BEEN HARD ON THE COHENS.....' with tempo marking 'Valse-Lente' and dynamic 'mf'. Copyright: 1914 M. Witmark.

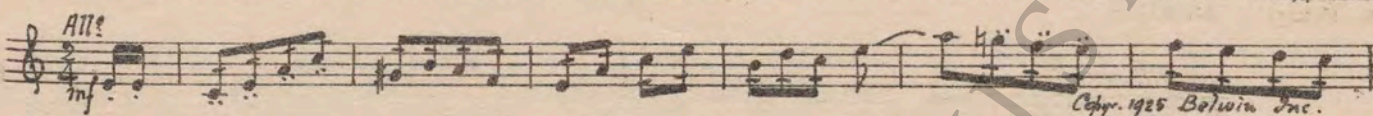
23 (Action) FLASH-BACK TO PARTY Polish Bamberrock (Ascher) 1 Min.

Kupz wiak

Copr. 1918 Emil Ascher.

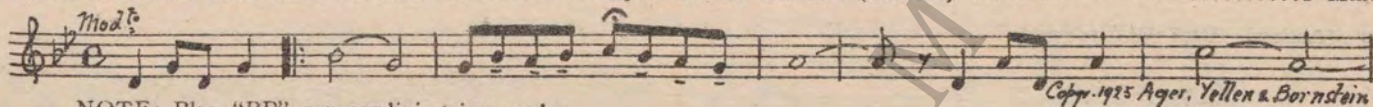
24 (Action) OLD COHEN'S FACIAL EXPRESSION
SOFTENS Kol Nidre (Roberts) 1 Min.

Adagio

Copr. 1913 Carl Fischer.

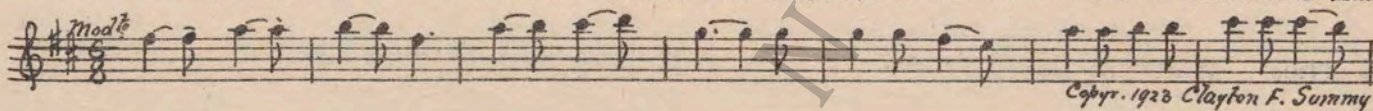
25 (Action) BOY TURNS ON WATER Repeat No. 13 "Scherzando Hurry" 3 Min.
26 (Action) COHEN TELEPHONING Gossip (Borch) 1 1/4 Min.

All^e
mf

Copr. 1925 Belwin Inc.

27 (Action) NANNIE AND MOTHER My Yiddishe Momme (Pollack) 1 Min.

Mod^o

NOTE: Play "PP" con sordini strings only.
Copr. 1925 Ager, Yellen & Bornstein

28 (Title) WHILE NAT WAS TAKING Slumber Boat (Gaynor) 2 Min.

Mod^o

Copr. 1928 Clayton F. Summy

29 (Title) CONGRATULATIONS, NATHAN Dram. Andante No. 1 (Rapee-Axt) 3 Min.

Sostenuto
mf

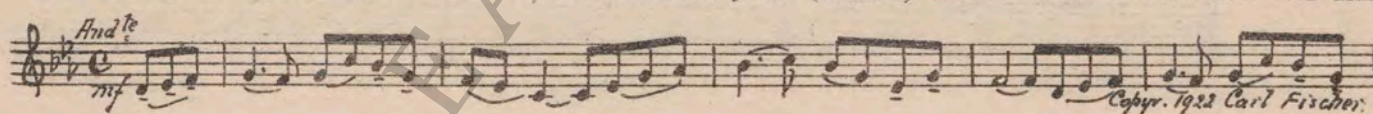
Copr. 1923 Robbins Engel, Inc.

30 (Title) TERRY KELLY Appassionato Dramatico (Berge) 1 1/2 Min.

Con moto appassion.

Copr. 1925 Robbins Engel.

31 (Title) THE FOLLOWING WEEK Londonderry Air (Roberts) 2 Min.

And^{te}
mf

Copr. 1922 Carl Fischer.

32 (Title) HE'LL LET ME SEE IT The B'Hoys of Tipperary (Amers) 1 1/2 Min.

Marcia
pp

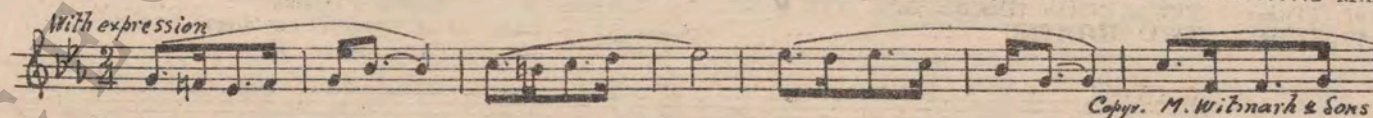
Copr. 1915 Hawkes & Son

33 (Action) CHILDREN START FIGHT Paddy Whack (Ascher) 3/4 Min

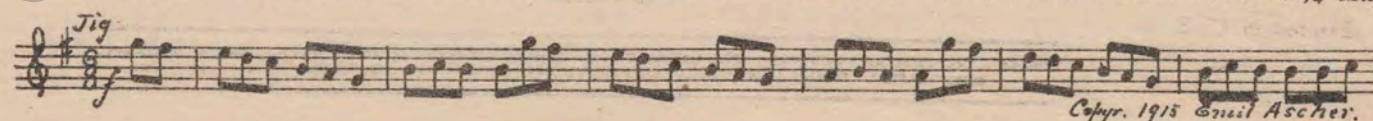
Jig

Copr. 1915 Emil Ascher.

34 (Title) I COME TO SEE THE BABY That's An Irish Lullaby (Shannon) 2 Min.

With expression

Copr. M. Witmark & Sons

35 (Title) THE OLD MAN Garry Owen (Ascher) 1 1/4 Min.

Jig

Copr. 1915 Emil Ascher.

36 (Action) NANNIE AND BABY APPEAR IN DOORWAY. Cup of Bitterness (Zamecnik) 2 Min.

Handwritten checkmark. Musical notation for item 36. *And^{te} dramatico*. Copyright 1925 Sam Fox Pub. Co.

37 (Action) PAT RETURNS TO ROOM A Legend of Erin (Johnson) 2 Min.

Handwritten checkmark. Musical notation for item 37. *All^{to} comodo*. Copyright 1922 Belwin Inc.

38 (Action) PAT FINALLY LEAVES Repeat No. 15 "Hebrew Love Song" 2 Min.
39 (Title) MAMMA! Omens (Schad) 3/4 Min.

Handwritten checkmark. Musical notation for items 38 and 39. *All^{to} mod^{to}*. Copyright 1925 Geo. H. Sanders

40 (Action) PAT WITH FAMILY AND NANNIE A Gaelic Dream-Song (Foulds) 2 Min.

Handwritten number 9. Musical notation for item 40. *Expressivo*. Copyright 1922 Hawkes & Son

41 (Title) A LITTLE GRAND OPERA Adagio Elegiaque (Wieniawski) 3 3/4 Min.

Handwritten number 9. Musical notation for item 41. *Adagio*. Copyright 1924 G. Schirmer.

42 (Action) PAT HOLDING BABY Erin Go Braugh (DeWitt) 1 Min.

Handwritten checkmark. Musical notation for item 42. *All^{to}*. Copyright 1914 Carl Fischer.

43 (Action) FLASH-BACK TO COHEN AND GOLDBERG.. Despised (Zamecnik) 2 Min.

Handwritten checkmark. Musical notation for item 43. *And^{te} con moto*. Copyright 1925 Sam Fox Pub. Co.

44 (Action) FLASH-BACK TO PAT AND FAMILY..... Repeat Theme No. 7 1 Min.
45 (Action) COHEN IN HALLWAY..... Dort wo die Zeder (Katz) 1 Min.

Handwritten number 9. Musical notation for items 44 and 45. *And^{te}*. Copyright 1919 Carl Fischer.

46 (Title) I'VE BEEN A STUBBORN OLD FOOL..... Pleading (Wood) 3 1/2 Min.

Handwritten checkmark. Musical notation for item 46. *And^{te} mod^{to}*. Copyright 1916 Hawkes.

47 (Title) IT'S A FINE GRAND-DAD YOU ARE..... Repeat No. 20 "Rock-a-Bye Baby" 3/4 Min.
48 (Title) TWO MONTHS Let It Rain, Let It Pour (Donaldson) 2 Min.

Handwritten checkmark. Musical notation for items 47 and 48. *Mod^{to}*. Copyright 1925 Leo Feist Inc.

THE END

Printed in U. S. A.

Complete orchestrations and single piano parts of each separate number contained hereon, can be purchased from CAMEO MUSIC SERVICE CORPORATION, 315-317 West 47th Street, New York City.