

M. J. MINTZ (PATENT)
JULY 31, 1923.

The C. M. Company
presents

“COMPANIONATE MARRIAGE”

with

BETTY BRONSON and ALEC B. FRANCIS

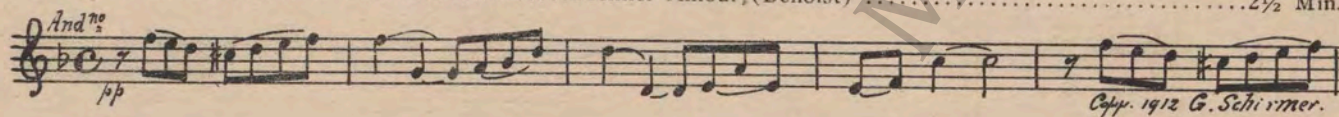
By Judge Ben B. Lindsey and Wainwright Evans

Directed by Erle C. Kenton

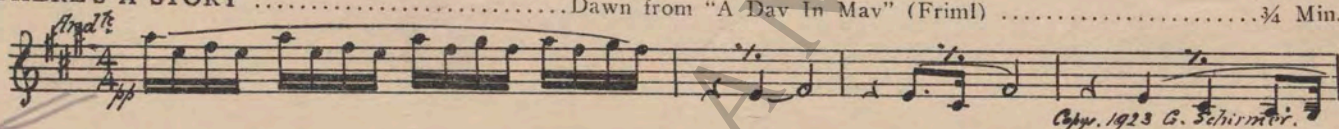
Compiled by James C. Bradford

A First National Picture

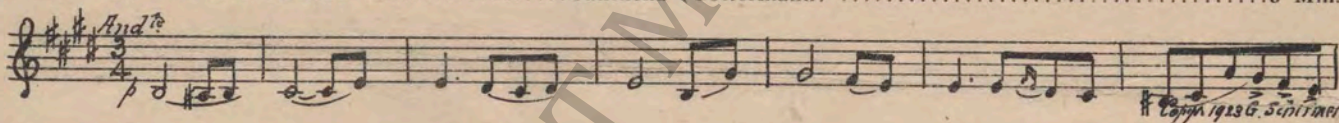
- 1 AT SCREENING Premier Amour, (Benoist) 2½ Min.



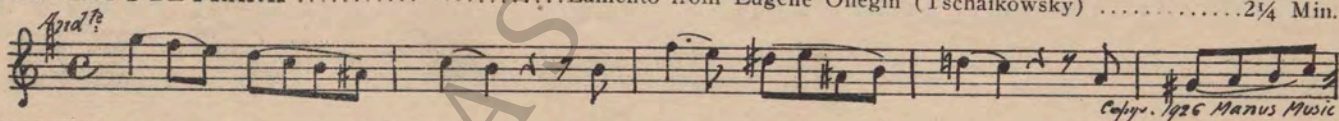
- 2 (Title) THERE'S A STORY Dawn from "A Day In May" (Friml) ¾ Min.



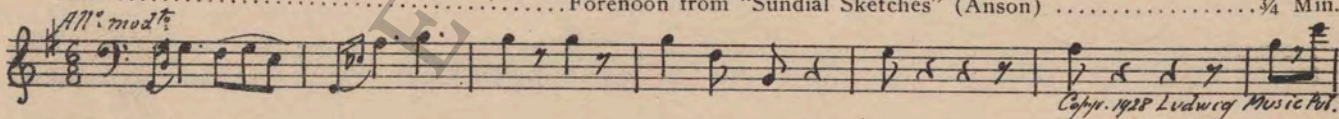
- 3 (Action) INSERT—JUVENILE COURT Cantilena (Goltermann) 3 Min.



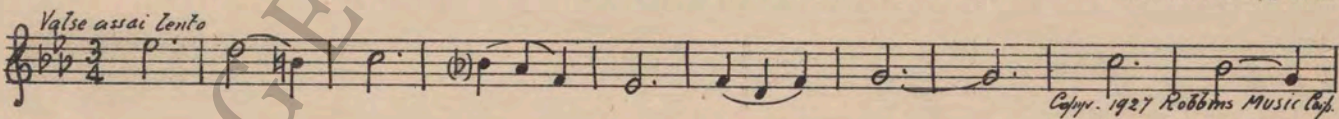
- 4 (Title) NOW LET'S BE FRANK Lamento from Eugene Onegin (Tschaikowsky) 2¼ Min.



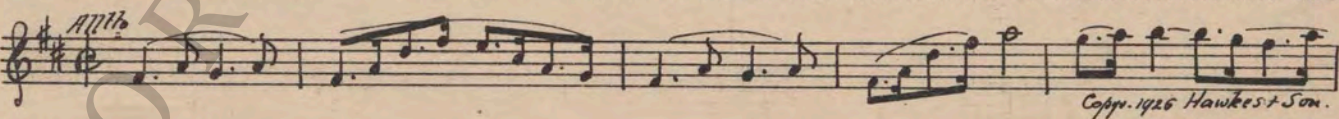
- 5 (Action) OFFICE DOOR OF JAMES W. MOORE & SON Forenoon from "Sundial Sketches" (Anson) ¾ Min.



- 6 (Action) WOMAN ENTERS OFFICE Valse Celeste (Wittstein) ½ Min.



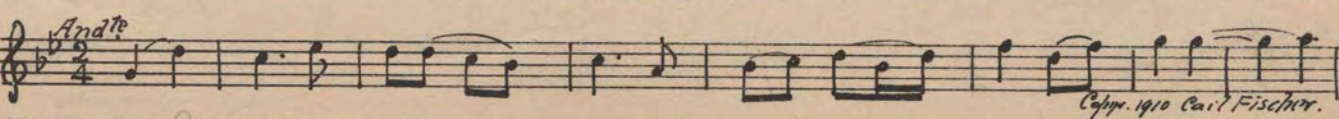
- 7 (Action) DONALD ENTERS OFFICE Pastime (Clutsam) 2 Min.



- 8 (Title) IT'S YOUR MOTHER Smile of Columbine (Drigo) 1¼ Min.



- 9 (Action) INSERT—A. C. WELLS Berceuse (Jarnefelt) 2½ Min.



NOTE: Play very slowly in a monotone style.

D - Sally Leaves Room with Box of Flowers

10 (Action) SALLY LEAVES ROOM WITH BOX OF FLOWERS THEME: Only A Dream (Pollack) 1/2 Min.

Handwritten "Theme" in red ink is written vertically on the left side of the page. The musical score for item 10 consists of four staves of music in treble clef, key of D major, and 3/4 time. The tempo is marked "Valse". The score includes first and second endings. Copyright information at the bottom right reads "Copp. 1928 Bibo, Bloodon + Lang." A blue checkmark is visible in the top right corner.

11 (Action) FLASH-BACK TO MOTHER SEWING Repeat No. 9 "Berceuse" 1 1/4 Min.

The musical score for item 11 is a single staff of music in treble clef, key of D major, and 3/4 time. The tempo is marked "And^{te}". The staff is mostly empty, indicating that the music is to be played as previously enumerated.

12 (Action) MUSICIAN PLAYING ORGAN NOTE: Play as previously enumerated. Chopinata (Doucet) 1/2 Min.

The musical score for item 12 is a single staff of music in treble clef, key of D major, and 3/4 time. The tempo is marked "Mod^{to}". Copyright information at the bottom right reads "Copp. 1927 Sam Fox."

13 (Action) DANCING STOPS Doux Murmure (Gillet) 1 1/4 Min.

The musical score for item 13 is a single staff of music in treble clef, key of D major, and 3/4 time. The tempo is marked "Alleg^{ro}". Copyright information at the bottom right reads "Copp. 1925 Manus Music Co."

14 (Action) DANCING STARTS AGAIN Nola (Arndt) 1 1/4 Min.

The musical score for item 14 is a single staff of music in treble clef, key of D major, and 3/4 time. The tempo is marked "Alleg^{ro}". Copyright information at the bottom right reads "Copp. 1922 Sam Fox."

15 (Title) THERE'S A LOVELY MOON Repeat Theme No. 10 2 3/4 Min.

Handwritten "Theme" in red ink is written vertically on the left side of the page. The musical score for item 15 is a single staff of music in treble clef, key of D major, and 3/4 time. The tempo is marked "Valse". The staff is mostly empty, indicating that the music is to be repeated from Theme No. 10.

16 (Title) TAKE ME HOME NOW PLEASE Reverie d'Amour (D'Aquin) 1 1/4 Min.

The musical score for item 16 is a single staff of music in treble clef, key of D major, and 3/4 time. The tempo is marked "And^{te}". Copyright information at the bottom right reads "Copp. 1925 Sonnemann Music Co."

17 (Title) DON WANTS TO MARRY THAT GIRL Nymphs Frolic (Bradford) 3/4 Min.

The musical score for item 17 is a single staff of music in treble clef, key of D major, and 3/4 time. The tempo is marked "Alleg^{ro} brillante". Copyright information at the bottom right reads "Copp. 1927 Belwin Inc."

18 (Action) TOMMY AND KITTEN OUT OF AUTO Air de Ballet (Massenet) 1/2 Min.

The musical score for item 18 is a single staff of music in treble clef, key of D major, and 3/4 time. The tempo is marked "Alleg^{ro}" and the dynamic is "mf". Copyright information at the bottom right reads "Copp. Carl Fischer."

19 (Action) GUESTS DEPARTINGAmoroso (Bierman)2 Min.

Musical notation for item 19, marked *Mod^{to} Mollo*. Copyright 1927 American Composers.

20 (Title) THE MOST UNFORTUNATE ORPHANS.....Repeat No. 1 "Premier Amour"1 Min.

Musical notation for item 20, marked *And^{no}*.

21 (Action) SALLY AND DON IN CARRepeat Theme No. 10¾ Min.

Musical notation for item 21, marked *Valse*. A red handwritten word "Theme" is written over the notation.

22 (Title) JAZZ BRIDE CLIFF CAFEDown Where the Sun Goes Down (Jones)1½ Min.

Musical notation for item 22, marked *Jazz tempo*. Copyright 1928 Leo Feist.

23 (Title) NOW BOYS, LET'S HAVEMarriage Blues (Berkin)1¾ Min.

Musical notation for item 23, marked *Jazz Tempo*. Copyright 1920 Belwin Inc.

24 (Action) AFTER EXIT OF CABARET ACTRustic Caprice (St. Clair)¾ Min.

Musical notation for item 24, marked *All^o Mod^{to}*. Copyright 1927 Sam Fox.

25 (Action) MARRIAGE CEREMONY ON DANCE FLOOR..Wedding March (Mendelssohn)¾ Min.

Musical notation for item 25, marked *All^o*. Copyright 1911 Carl Fischer.

26 (Action) TOMMY AND KITTEN EMBRACE—
START TO DANCECrazy Words—Crazy Tune (Ager)½ Min.

Musical notation for item 26, marked *Jazz Tempo*. Copyright 1927 Ager-Yellen + Bornstein.

27 (Action) INSERT—JAZZ JUVENILESAdventure d'Amour (Bradford)1½ Min.

Musical notation for item 27, marked *All^o*. Copyright 1927 Robbins Music Corp.

28 (Action) FADE-IN BRIDAL VEILRepeat No. 9 "Berceuse"1 Min.

Musical notation for item 28, marked *And^{te}*.

29 (Action) SALLY AT DESKAndante from Fifth Symphony (Tschaikowsky)3¼ Min.

Musical notation for item 29, marked *And^{te} cantabile*. Copyright 1912 Carl Fischer.

30 (Action) MOTHER AND DON ENTERUnrest (Kovacs)1¼ Min.

Musical notation for item 30, marked *All^o Mod^{to}*. A handwritten note "Return to me soon" is written above the notation. Copyright 1928 American Composers.

31 (Title) EVERYTHING SHE COULD WANT.....Dramatic Prelude (Schad)2 Min.

Musical notation for item 31, marked *And^{te} sost.* and *mf*. Copyright 1925 G. Schirmer.

Handwritten note: "Alright you'll get rid of me -"

32 (Title) ALL RIGHT, YOU'LL GET RID OF ME.....Dance of the Furies (Gluck)2 Min.

Vivace
 Copyright 1926 Sonnemann Music Co.

33 (Title) NOTE: Catch crash as car plunges through bridge rail.
YOUTH RIDES WRECKLESSLYDo You Love Me? (Wolf)1 1/4 Min.

Jazz Tempo
 Copyright 1927 Sherman, Clay & Co.

34 (Title) NOTE: Play this and following sequences very carefully—dropping music to "PPP" for scenes over dying girl.
DON MUSTN'T GO THERELove's Emotion (Marquardt)1 1/2 Min.

And^{te} appass *agitato appass*
 Copyright 1928 Music Buyer's Corp.

35 (Action) FLASH-BACK TO CAFETwo Lips (Warren)2 3/4 Min.

Jazz Tempo
 Copyright 1928 Remick Music Corp.

36 (Title) NOTE: Watch carefully and play "PP" for flash-backs to anxious workers over Kitten.
STOP FOOLSAppassionato No. 2 (Axt)1/2 Min.

All^{te} appass
 Copyright 1924 Robbins Music Corp.

37 (Title) IT'S JUST THE STUFFMother Goose Parade (Bibo)1/2 Min.

Jazz Tempo
 Copyright 1928 Bibo, Bloodon + Lang.

38 (Action) DON SITTING ON BENCH—SALLY AT HIS SIDERepeat Theme No. 102 1/2 Min.

Valse

39 (Action) WELLS HOME—ANGRY AT NEWSPAPER STORYChatter (Kahn)1/2 Min.

Tempo Rubato
 Copyright 1926 Sonnemann Music Co.

40 (Action) CHANGE OF SCENEPassion's Slave (Jacquet)2 1/4 Min.

And^{te} ma non troppo *Adieu*
 Copyright 1928 Irving Berlin.

41 (Action) CHANGE OF SCENEPoupee Valsante (Poldini)1/2 Min.

All^{te}to
 Copyright Carl Fischer.

42 (Action) SALLY AND DON EMBRACERepeat Theme No. 101/2 Min.

Valse

THE END

Printed in U. S. A.

Complete orchestrations and single piano parts of each separate number contained hereon, can be purchased from CAMEO MUSIC SERVICE CORPORATION, 315-317 WEST 47TH STREET, NEW YORK CITY.

95:1706:1