

M. J. MINTZ (PATENT)
JULY 31, 1923.

Pathe
presents

"CRAIG'S WIFE"

with
IRENE RICH and WARNER BAXTER

A William C. deMille Production

Adapted by Clara Beranger

From the stage play by George Kelly

Compiled by Howard T. Wood

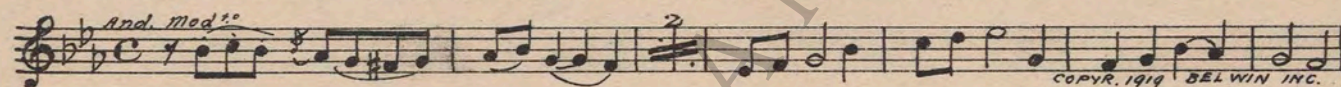
Pathe Exchange, Inc.

Distributors

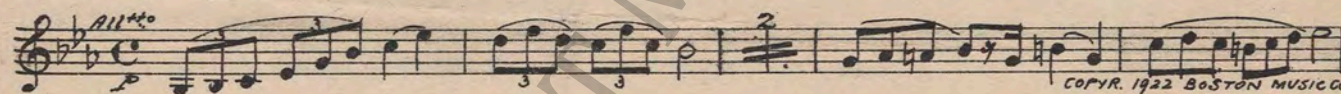
1 AT SCREENING Prologue (Gabriel Marie).....1¼ Min.



2 (Action) PICTURE—MAN SEEN Budding Spring (Platzmann).....1¾ Min.



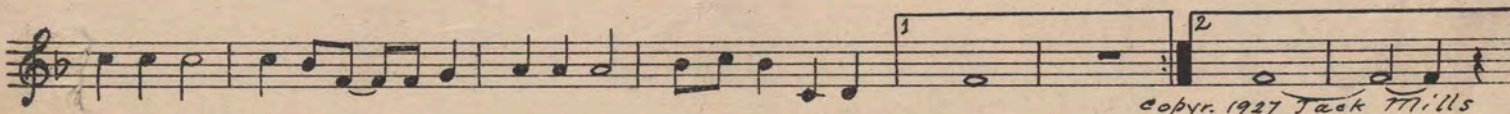
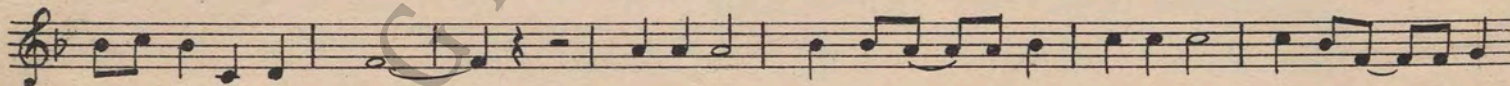
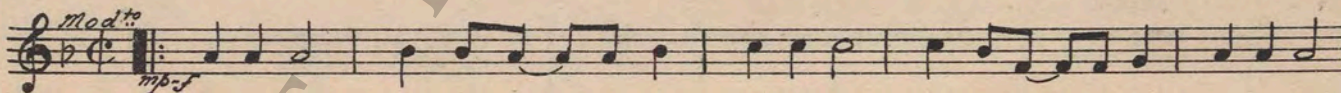
3 (Action) CRAIG LEAVES HOUSE..... Fairvland (Huerter)1½ Min.



4 (Title) THE LADY NEXT DOOR..... Rose Leaves (Edwards).....1 Min.



5 (Title) I JUST HAD TO SEE YOU ETHEL..... THEME: Following You Around (Kahn).....1½ Min.



D—Ethel enters House

6 (Action) ETHEL ENTERS HOUSE..... Love Song (Wright).....2 Min.

Musical notation for item 6: Love Song (Wright). Key signature: one sharp (F#), time signature: 2/4. Tempo: *And^{te}*. Copyright: 1920 G. SCHIRMER.

7 (Action) YOUNG MAN AT DOOR..... Douces Larmes (Barbirolli).....1½ Min.

Musical notation for item 7: Douces Larmes (Barbirolli). Key signature: two flats (Bb, Eb), time signature: 3/8. Tempo: *Poco agitato*. Instrumentation: *Cello solo*. Copyright: 1925 BASWORTH & CO.

8 (Action) CRAIG ENTERS HOUSE..... A Love Lesson (Fresco).....1¾ Min.

Musical notation for item 8: A Love Lesson (Fresco). Key signature: one sharp (F#), time signature: 4/4. Tempo: *All^o mod.*. Copyright: 1925 IRVING BERLIN.

9 (Title) THE MOMENT MY BACK IS TURNED..... Appassionato No. 4 (Axt).....2 Min.

Musical notation for item 9: Appassionato No. 4 (Axt). Key signature: one sharp (F#), time signature: 3/4. Tempo: *All^o appass.*. Dynamics: *mf*. Copyright: 1925 ROBBINS MUSIC CORP.

10 (Title) DONT YOU SEE WHAT SHE'S DOING TO YOU..... Hedge Roses (Frey).....1¼ Min.

Musical notation for item 10: Hedge Roses (Frey). Key signature: one sharp (F#), time signature: 3/4. Tempo: *slow*. Copyright: 1923 ROBBINS MUSIC CORP.

11 (Action) CRAIG GOES TO ETHEL..... Just a Bunch of Daisies (Baron).....1¼ Min.

Musical notation for item 11: Just a Bunch of Daisies (Baron). Key signature: two flats (Bb, Eb), time signature: 3/4. Tempo: *And. semplice*. Dynamics: *mf*. Copyright: 1923 BELWIN INC.

12 (Action) INSERT-LETTER..... Andante Appassionato (Castillo).....2¼ Min.

Musical notation for item 12: Andante Appassionato (Castillo). Key signature: one sharp (F#), time signature: 3/4. Tempo: *Appass.*. Dynamics: *mf*. Copyright: 1917 S.M. BERG.

13 (Action) INSERT-TELEGRAM..... Marionettes (Felix).....1¾ Min.

Musical notation for item 13: Marionettes (Felix). Key signature: one sharp (F#), time signature: 2/2. Tempo: *All^o*. Copyright: 1927 G. SCHIRMER.

14 (Action) PASSMORE SEEN PREPARING BRIDGE TABLE..... Premonition (Zamecnik).....2¼ Min.

Musical notation for item 14: Premonition (Zamecnik). Key signature: one sharp (F#), time signature: 3/4. Tempo: *mod^{to}*. Copyright: 1925 SAM FOX PUB.

15 (Action) MRS. PASSMORE LEAVES..... Silver Fingers (Mallory).....1 Min.

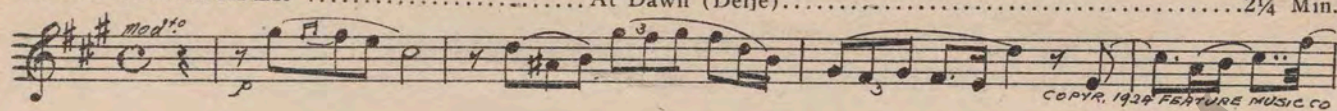
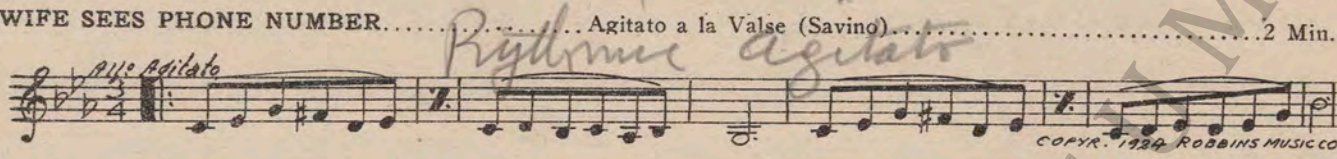
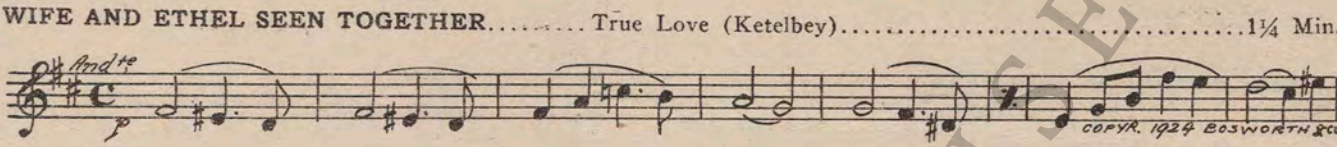
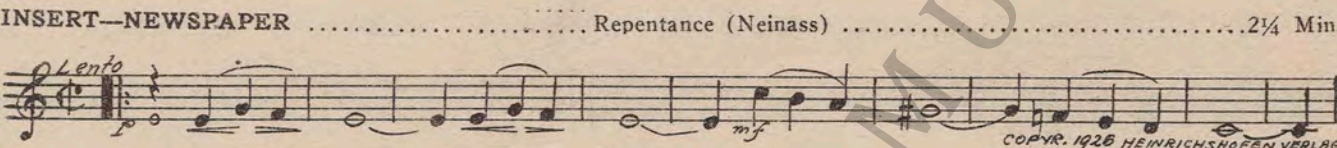
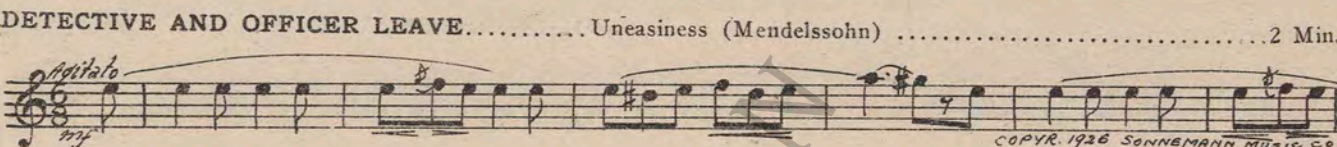
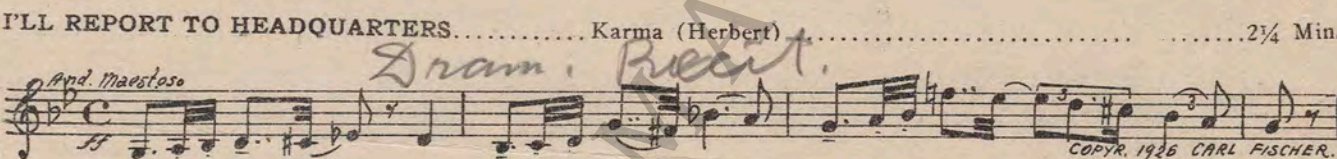
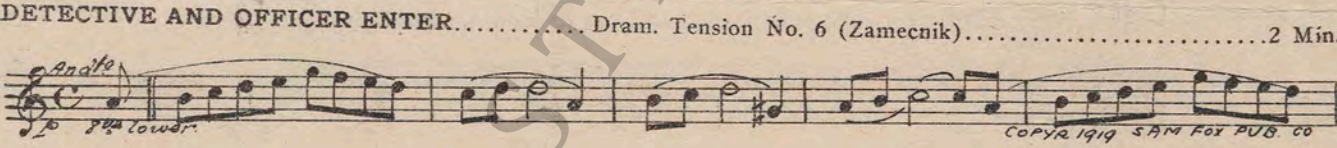
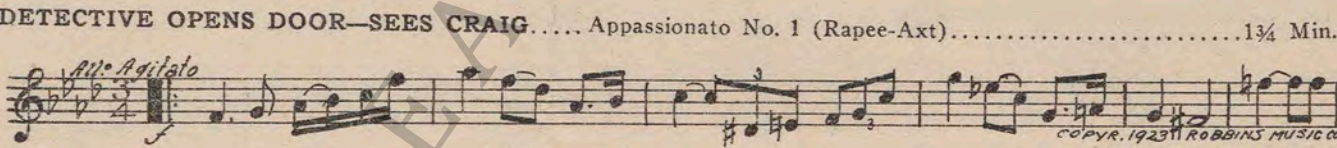
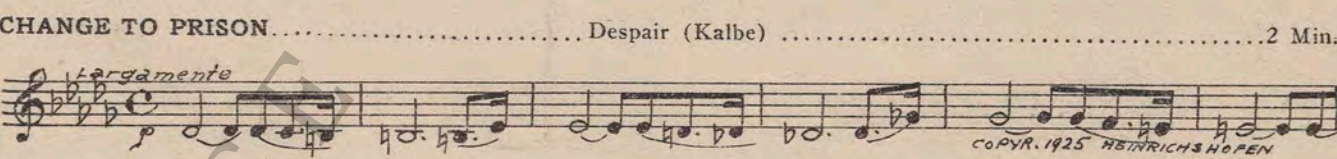
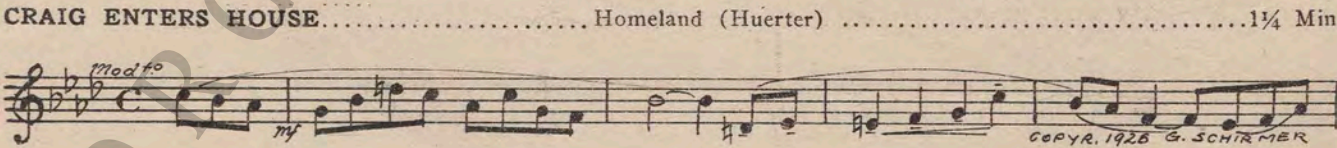
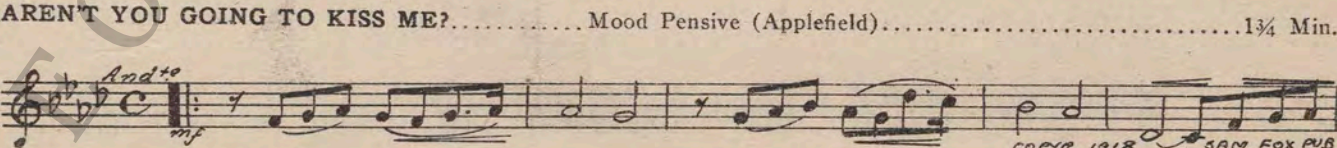
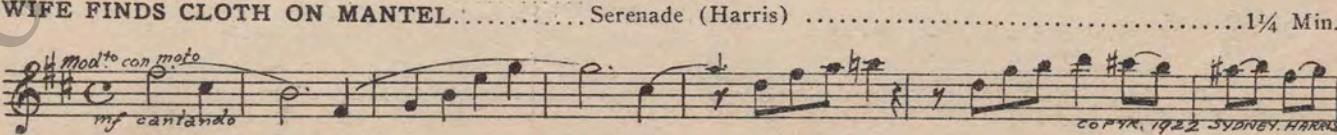
Musical notation for item 15: Silver Fingers (Mallory). Key signature: one sharp (F#), time signature: 3/4. Tempo: *mod^{to}*. Dynamics: *p*. Copyright: 1923 BOOSEY & CO.

16 (Action) CRAIG LEAVES..... Dram. Andante No. 24 (Borch).....1¼ Min.

Musical notation for item 16: Dram. Andante No. 24 (Borch). Key signature: one sharp (F#), time signature: 3/4. Tempo: *And^{to} mod^{to}*. Copyright: 1916 S.M. BERG.

17 (Action) PASSMORE SHOOT'S WIFE..... Dram. Agitato No. 43 (Borch).....2 Min.

Musical notation for item 17: Dram. Agitato No. 43 (Borch). Key signature: one sharp (F#), time signature: 3/4. Tempo: *All^o Agitato*. Dynamics: *fe*. Copyright: 1917 S.M. BERG.

- 18 (Action) INSERT-NEWSPAPER At Dawn (Delje).....2¼ Min.

 COPYR. 1924 FEATURE MUSIC CO
- 19 (Action) WIFE SEES PHONE NUMBER..... Agitato a la Valse (Savino).....2 Min.
Rhythmically agitato

 COPYR. 1924 ROBBINS MUSIC CO
- 20 (Action) WIFE AND ETHEL SEEN TOGETHER..... True Love (Ketelbey).....1¼ Min.
And to

 COPYR. 1924 BOSWORTH & CO
- 21 (Action) INSERT-NEWSPAPER Repentance (Neinass)2¼ Min.
Lento

 COPYR. 1926 HEINRICHSHOFEN VERLAG
- 22 (Action) DETECTIVE AND OFFICER LEAVE..... Uneasiness (Mendelssohn)2 Min.
Agitato

 COPYR. 1926 SONNEMANN MUSIC CO
- 23 (Title) I'LL REPORT TO HEADQUARTERS..... Karma (Herbert)2¼ Min.
And. Maestoso
Dram. Recit.

 COPYR. 1926 CARL FISCHER.
- 24 (Action) DETECTIVE AND OFFICER ENTER..... Dram. Tension No. 6 (Zamecnik).....2 Min.
And to

 COPYR. 1919 SAM FOX PUB. CO
- 25 (Action) DETECTIVE OPENS DOOR-SEES CRAIG..... Appassionato No. 1 (Rapee-Axt).....1¾ Min.
All. Agitato

 COPYR. 1925 ROBBINS MUSIC CO
- 26 (Action) CHANGE TO PRISON..... Despair (Kalbe)2 Min.
Largamente

 COPYR. 1925 HEINRICHSHOFEN
- 27 (Action) CRAIG ENTERS HOUSE..... Homeland (Huerter)1¼ Min.
Mod to

 COPYR. 1925 G. SCHIRMER
- 28 (Title) AREN'T YOU GOING TO KISS ME?..... Mood Pensive (Applefield).....1¾ Min.
And to

 COPYR. 1918 SAM FOX PUB.
- 29 (Action) WIFE FINDS CLOTH ON MANTEL..... Serenade (Harris)1¼ Min.
Mod to con moto
mf cantando

 COPYR. 1922 SYDNEY HARRIS

D- Exterior - Boy at Car -

30 (Action) EXTERIOR—BOY AT CAR..... Repeat Theme No. 5.....½ Min.

T

Musical score for 'EXTERIOR—BOY AT CAR'. It consists of five staves of music in G major, 2/4 time. The tempo is marked 'Mod^{to}' and the dynamics are 'mp-f'. The score includes a first ending and a second ending. Copyright: 1927 Jack Mills.

31 (Action) BACK TO CRAIG..... Inseguinto e Fuga (Bece).....2 Min.

Musical score for 'BACK TO CRAIG'. It consists of one staff of music in G major, 2/4 time. The tempo is marked 'Allegro' and the dynamics are 'p'. Copyright: 1925 Schlessinger.

32 (Title) YOU FIRED MARY..... Poem Erotique (MacDowell).....2 Min.

Musical score for 'YOU FIRED MARY'. It consists of one staff of music in G major, 2/4 time. The dynamics are 'pp'. Copyright: 1915 Ross, Jung Nickel.

33 (Action) CRAIG COMES DOWN STAIRS..... Prelude (Gaubatz)2½ Min.

Musical score for 'CRAIG COMES DOWN STAIRS'. It consists of one staff of music in G major, 2/4 time. The tempo is marked 'Mod^{to} assai' and the dynamics are 'p'. Copyright: 1928 Heinrichshofen.

34 (Action) CRAIG LEAVES HOUSE..... Repeat No. 4 "Rose Leaves".....1¼ Min.

Musical score for 'CRAIG LEAVES HOUSE'. It consists of one staff of music in G major, 2/4 time. The tempo is marked 'And^{te} Mod^{to}' and the dynamics are 'p'.

35 (Action) BOY AND ETHEL ARRIVE..... Repeat Theme No. 5.....1¾ Min.

T

Musical score for 'BOY AND ETHEL ARRIVE'. It consists of one staff of music in G major, 2/4 time. The tempo is marked 'Mod^{to}' and the dynamics are 'mp-f'.

36 (Action) ETHEL LEAVES HOUSE..... Epilogue (Gabriel Marie).....¾ Min.

Musical score for 'ETHEL LEAVES HOUSE'. It consists of one staff of music in G major, 2/4 time. The tempo is marked 'Agitato'. Handwritten title: 'Twilight - Bendix'. Copyright: Manus Music Co.

Printed in U. S. A.

THE END

Complete orchestrations and single piano parts of each separate number contained hereon, can be purchased from CAMEO MUSIC SERVICE CORPORATION, 315-317 WEST 47TH STREET, NEW YORK CITY.

95:17:1