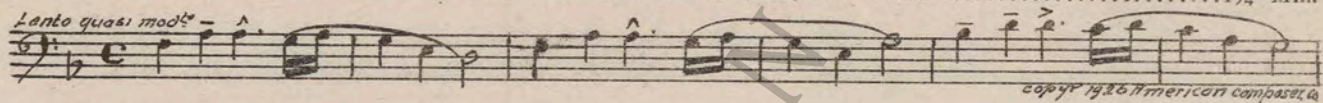


462

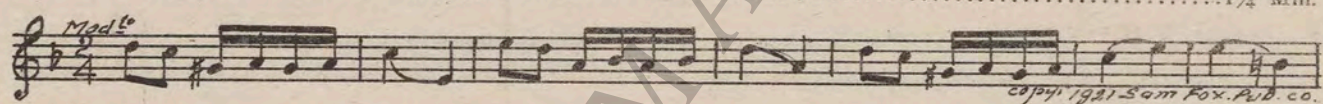


Robert Kane  
presents  
The Halperin Production  
**“DANCE MAGIC”**  
with  
**BEN LYON, PAULINE STARKE**  
and Louis John Bartels  
Adapted from the novel by Clarence Buddington Kelland  
Directed by Victor Halperin  
Compiled by James C. Bradford  
A First National Picture

1 AT SCREENING ..... Grania Overture (Hill) ..... 1¼ Min.



2 (Title) IN THE VILLAGE OF RIPLEY ..... In Birdland (Zamecnik) ..... 1¼ Min.



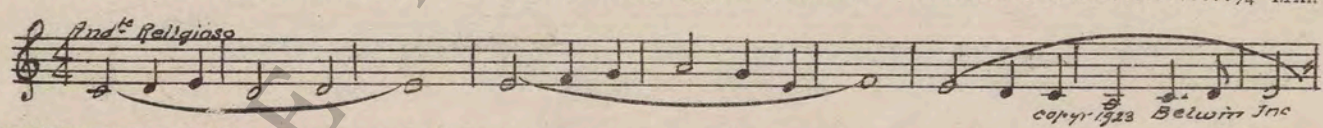
3 (Action) INSERT OF BOOK ..... Gaily Thro' Life (Schad) ..... 1½ Min.



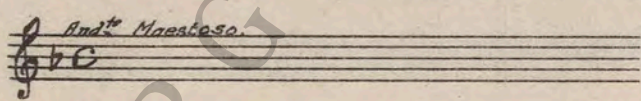
4 (Title) YOU—YOU SINNER ..... Le Seigneur de Kermor (Gabriel Marie) ..... 2½ Min.



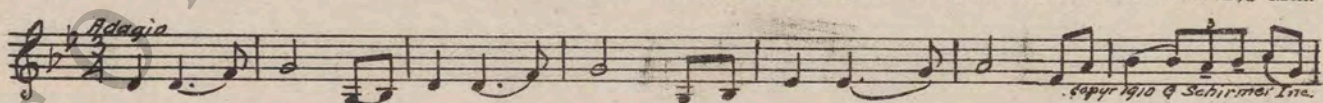
5 (Title) ON SUNDAY THE VILLAGERS ..... A Cloister Episode (Baron) ..... ¾ Min.



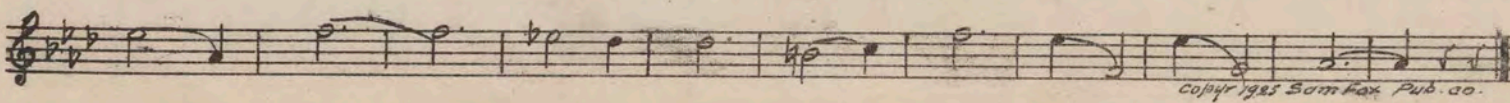
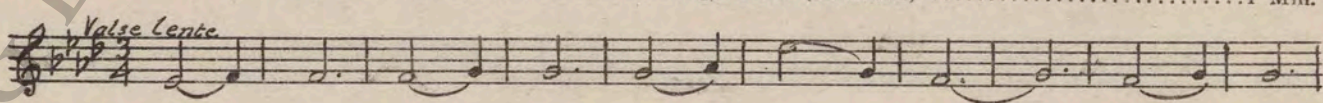
6 (Action) FATHER GOES UP TO SCHOOL TEACHER... Repeat No. 4 "Le Seigneur de Kermor" ..... 1 Min.



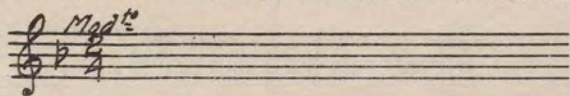
7 (Action) CHURCH INTERIOR ..... Adagio Pathetique (Godard) ..... 2¾ Min.



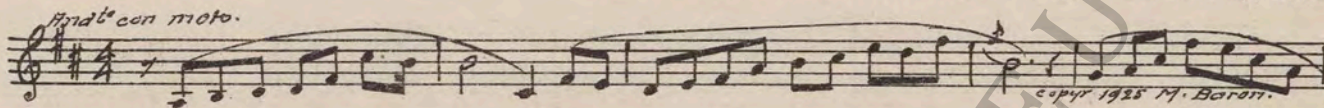
8 (Title) AS JAHALA GREW OLDER ..... THEME: Magic Love (Bradford) ..... 1 Min.



9 (Action) GIRL IN PHOTO STARTS DANCING ..... Repeat No. 2 "In Birdland" ..... ¾ Min.



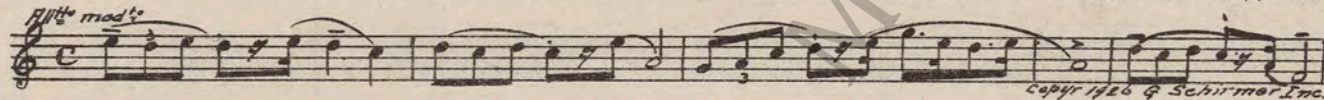
10 (Action) FATHER ENTERS ..... By the Fireside (Helfand) ..... 2¼ Min.



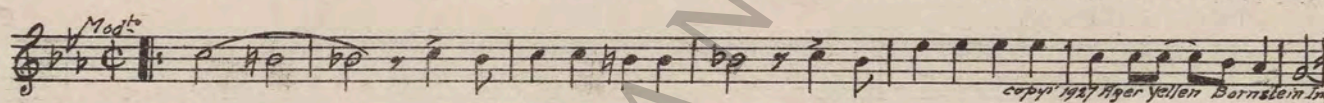
11 (Title) BY RAIL IT ISN'T ..... I'm On My Merry Way (Whiting) ..... 1½ Min.



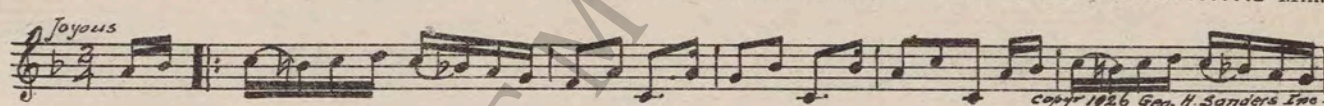
12 (Title) LEACH NORCUTT ..... Stray Sunbeams (Huerter) ..... 1¼ Min.



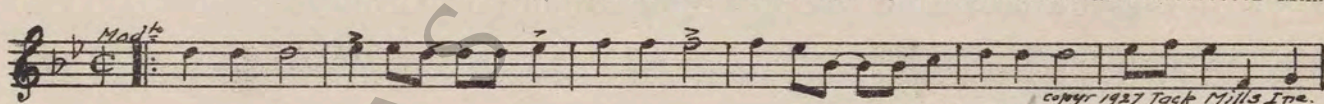
13 (Action) JAHALA SNEAKS INTO PRIVATE OFFICE... Ain't She Sweet? (Ager) ..... 2¼ Min.



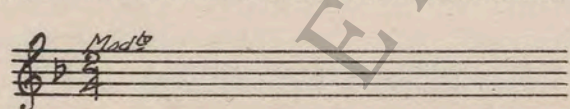
14 (Action) THEY ENTER ELEVATOR ..... Happy Hectic Hours (Schad) ..... 2 Min.



15 (Action) JAHALA SEEN ON BUS ..... Following You Around (Kahn) ..... 2 Min.



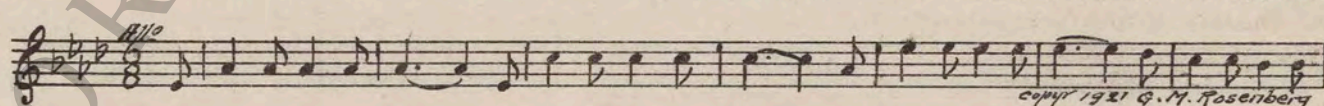
16 (Title) THE FIRST STEPS ..... Repeat No. 2 "In Birdland" ..... 2 Min.



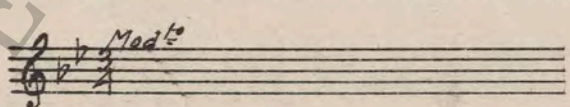
17 (Action) NORCUTT LEAVES ..... Junella (Kahn) ..... 2¼ Min.



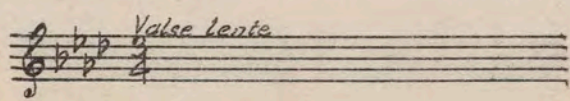
18 (Action) ORCHESTRA STARTS ..... A Hunting Scene (Bucalossi) ..... 1¾ Min.



19 (Action) END OF DANCE ..... Repeat No. 3 "Gaily Thro' Life" ..... 1½ Min.



20 (Action) EXTERIOR SCENE ..... Repeat Theme No. 8 ..... 1½ Min.



21 (Title) YOU'RE INSULTING ..... Love Romance (Bruhns) ..... 1¼ Min.

Musical notation for 'YOU'RE INSULTING' with tempo marking *And<sup>te</sup> Mod<sup>to</sup>* and copyright notice 'copyr 1927 Ross Jungnickel Inc.'

22 (Title) WHEN JAHALA ARRIVED ..... Prattle (Lowitz) ..... 2¾ Min.

Musical notation for 'WHEN JAHALA ARRIVED' with tempo marking *All<sup>o</sup> mod<sup>to</sup>* and copyright notice 'copyr 1927 G. Schirmer Inc.'

23 (Title) BROPHY NEGLECTED ..... So Blue (Henderson) ..... 2 Min.

Musical notation for 'BROPHY NEGLECTED' with tempo marking *Valse Blue* and copyright notice 'copyr 1927 De Sylva, Brown, Henderson'

24 (Title) SELMA, I'M AFRAID ..... Agony of the Soul (Bece) ..... 2½ Min.

Musical notation for 'SELMA, I'M AFRAID' with tempo marking *Largo*, '8va bassa', and copyright notice 'copyr 1922 Schlesinger'

25 (Title) WEEKS OF ..... Country Gardens (Grainger) ..... 1 Min.

Musical notation for 'WEEKS OF' with tempo marking *All<sup>o</sup>* and copyright notice 'copyr 1925 G. Schirmer Inc.'

26 (Action) JAHALA AND NORCUTT ALONE ..... Repeat Theme No. 8 ..... 1¼ Min.

Musical notation for 'JAHALA AND NORCUTT ALONE' with tempo marking *Valse lenta*

27 (Action) BROPHY ENTERS ..... Repeat No. 22 "Prattle" ..... 1¼ Min.

Musical notation for 'BROPHY ENTERS' with tempo marking *All<sup>o</sup> Mod<sup>to</sup>*

28 (Title) AT THE OPENING PERFORMANCE ..... Dance of the Demons from "Prince Ador" (Rybnar) ..... 1¼ Min.

Musical notation for 'AT THE OPENING PERFORMANCE' with tempo marking *All<sup>o</sup>* and copyright notice 'copyr 1925 Carl Fischer'

29 (Action) DANCER THROWS OFF CAPE ..... Dance of the Archers (Borodin) ..... 2¼ Min.

Musical notation for 'DANCER THROWS OFF CAPE' with tempo marking *All<sup>o</sup>*, '8va', and copyright notice 'copyr 1921 G. Schirmer'

30 (Action) INSERT—PROGRAM ..... Repeat No. 14 "Happy Hectic Hours" ..... 1½ Min.

Musical notation for 'INSERT—PROGRAM' with tempo marking *Tourans*

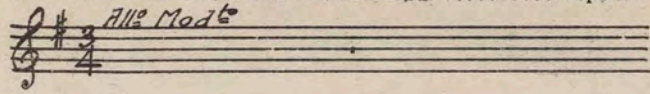
31 (Action) JAHALA LEAVES STAGE ..... Dance of the Wild Men (Borodin) ..... ½ Min.

Musical notation for 'JAHALA LEAVES STAGE' with tempo marking *All<sup>o</sup> vivo* and copyright notice 'copyr 1921 G. Schirmer Inc.'

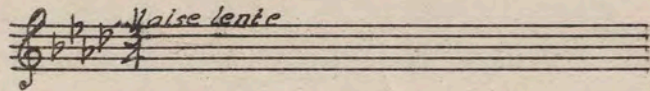
32 (Action) DRESSING ROOM SCENE ..... Repeat Theme No. 8 ..... 3 Min.

Musical notation for 'DRESSING ROOM SCENE' with tempo marking *Valse lenta*

33 (Title) BROPHY'S IMPORTANT BUSINESS ..... Repeat No. 22 "Prattle" ..... ¾ Min.



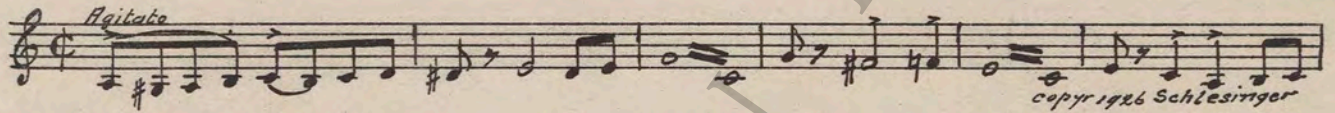
34 (Action) FADE-BACK TO LOVERS ..... Repeat Theme No. 8 ..... ½ Min.



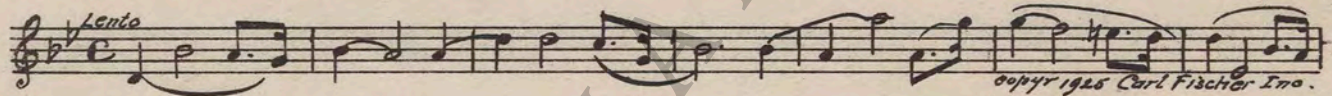
35 (Title) WON'T YOU COME TO SEE ..... Appassionata (Clutsam) ..... ¾ Min.



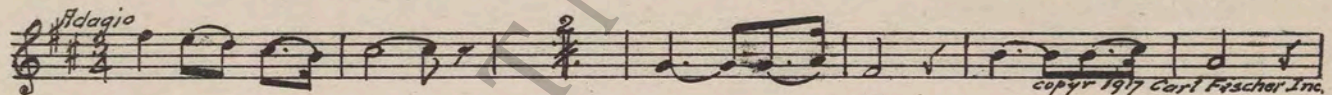
36 (Title) AT 110 PARK AVENUE ..... Agitato Misterioso (Bece) ..... 1½ Min.



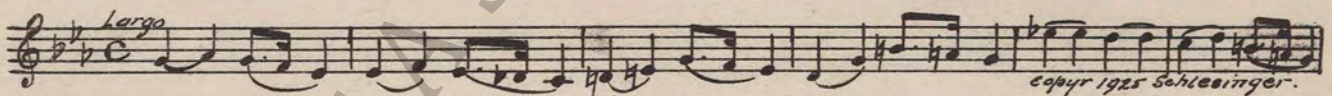
37 (Action) NORCUTT SEES BODY ON FLOOR ..... Souvenir (Herbert) ..... 2½ Min.



38 (Title) TIME SEEMED TO MEAN ..... Adagio Lamentoso (Tschaiakowsky) ..... 5 Min.



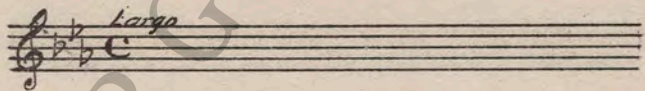
39 (Title) YES IT'S MINE ..... Largo Tragico (Chopin) ..... 2 Min.



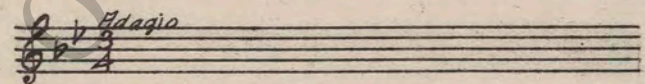
40 (Action) SELMA SEES IAHALA ..... Love's Despair (Siewert) ..... 1 Min.



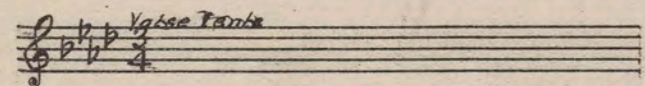
41 (Action) IAHALA AND NORCUTT ALONE ..... Repeat No. 39 "Largo Tragico" ..... 1¼ Min.



42 (Title) BACK TO THE HOME ..... Repeat No. 7 "Adagio Pathetique" ..... 5 Min.



43 (Action) LOVERS EMBRACE AFTER CHURCH SCENE. Repeat Theme No. 8 ..... 1 Min.



THE END

Printed in U. S. A.

Complete orchestrations and single piano parts of each separate number contained hereon, can be purchased from CAMEO MUSIC SERVICE CORPORATION, 315-317 WEST 47TH STREET, NEW YORK CITY.

95:1724:1