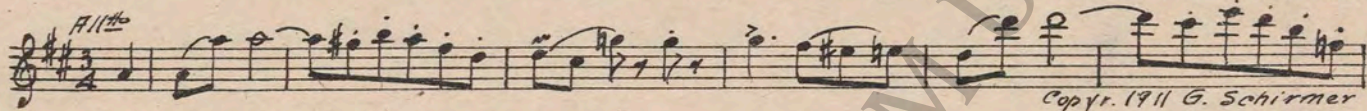


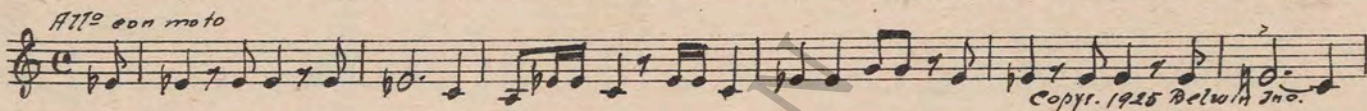
M. J. MINTZ (PATENT)
JULY 31, 1923

ROBERT KANE
presents
MICHAEL ARLEN'S
"THE DANCER OF PARIS"
Music compiled by Eugene Conte
A FIRST NATIONAL PICTURE

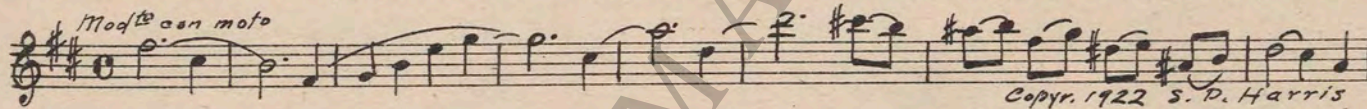
- 1 AT SCREENING A Ball Scene (Nicode) 1 1/4 Min.



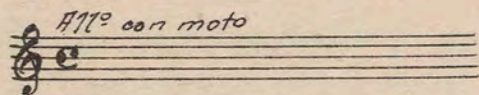
- 2 (Title) SIR ROY MARTEL Anger Motive (Kilenyi) 1 1/2 Min.



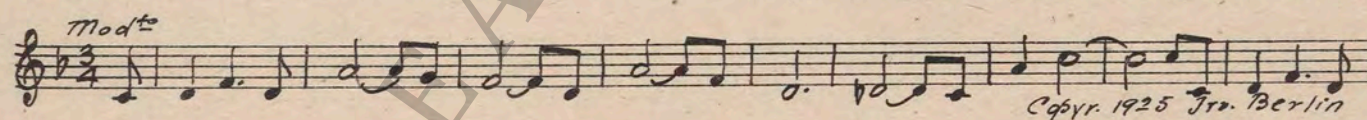
- 3 (Title) CONSUELO DEANE Serenade (Harris) 1 Min.



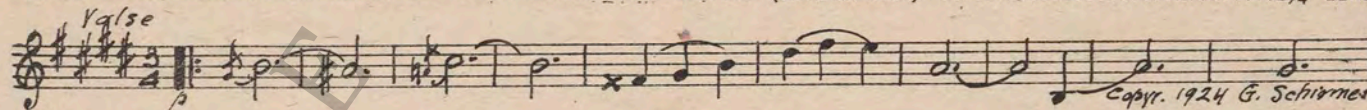
- 4 (Action) FADE-BACK MARTEL AND DOCTOR Repeat No. 2 "Anger Motive" 1 Min.



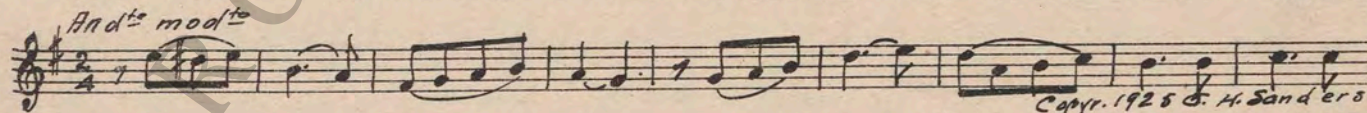
- 5 (Action) DANCING THEME: Remember (Berlin) (Direct Cue) 1 1/4 Min.



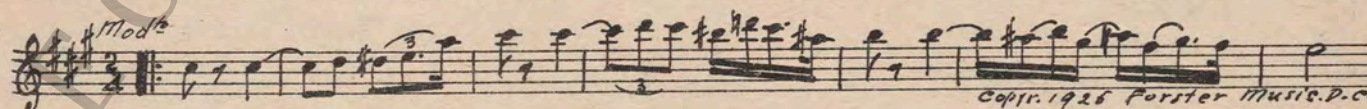
- 6 (Action) MISS DEANE LEAVES MARTEL Valse Celebre (Moszkowski) 1 1/4 Min.



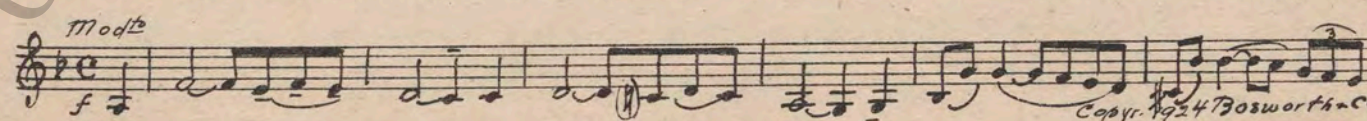
- 7 (Title) I SIMPLY COULD NOT Disillusioned (Srawley) 1/2 Min.



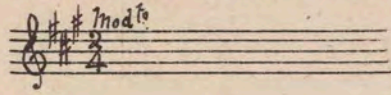
- 8 (Action) SOLO DANCERS Yo Te Amo (Mueller) 1 Min.



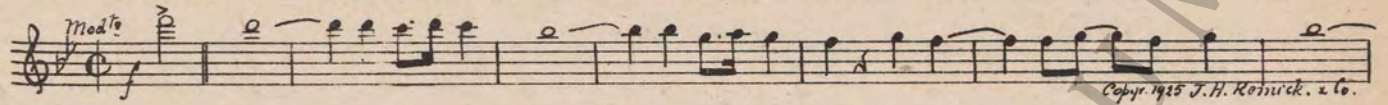
- 9 (Action) END OF DANCE Rhapsody Appassionata (Ketelbey) 1/2 Min.



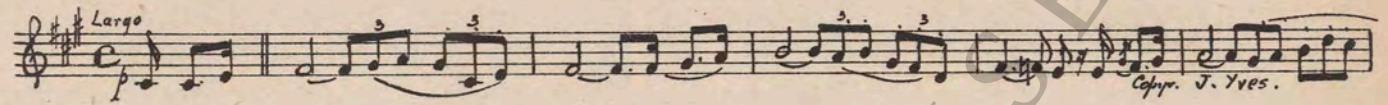
10 (Action) ORCHESTRA STARTS AGAIN Repeat No. 8 "Yo Te Amo" ½ Min.



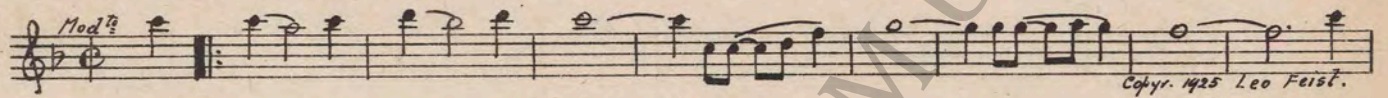
11 (Action) MISS DEANE STOPS ORCHESTRA..... Sweet Child (Whiting) ½ Min.



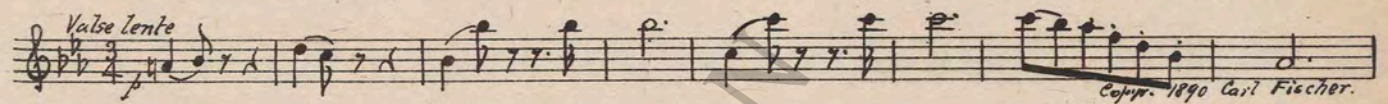
12 (Action) MARTEL AND DOCTOR..... Chagrin (Reillac) 1¾ Min.



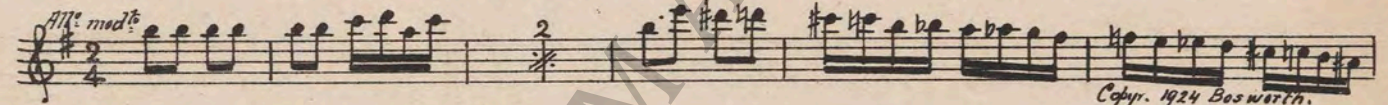
13 (Action) FADE-BACK TO DANCING I'm Sitting on Top of the World (Henderson) ¾ Min.



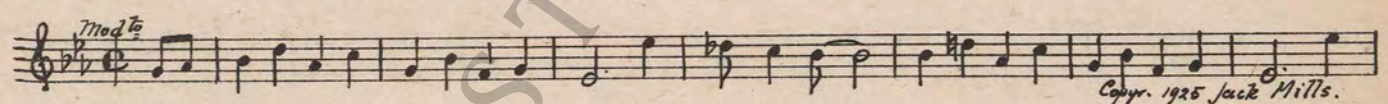
14 (Title) PARIS Tout Paris (Waldteufel) 2¼ Min.



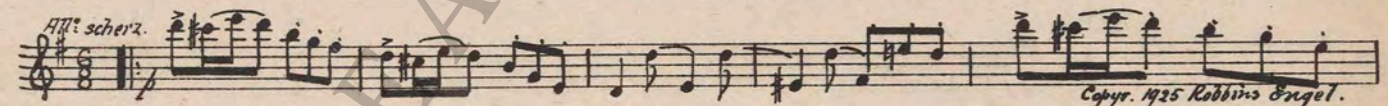
15 (Title) GENTLEMEN, I HAVE A Arabian Nights (Ketelbey) 2 Min.



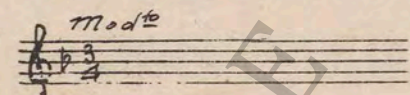
16 (Title) ACROSS THE HALL..... When a Blond Makes Up Her Mind (Mills) (Piano Solo)..... ½ Min.



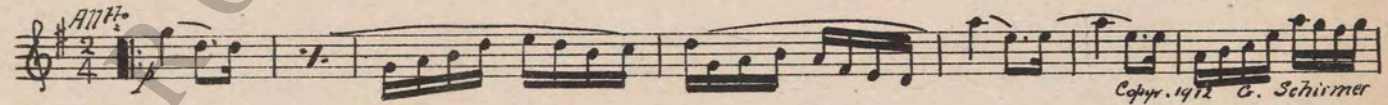
17 (Title) WHO'S THE PADEREWSKI In Merry Mood (Axt) 1½ Min.



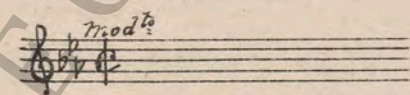
18 (Action) CLOSE-UP OF HANDS ON KEY BOARD..... Repeat Theme No. 5 (Piano Solo)..... 1¼ Min.



19 (Action) FADE-OUT AFTER TITLE: "I WISH SHE'D STOP PLAYING Serenata (Cajani) 2¾ Min.



20 (Action) MARTEL KNOCKS ON DOOR Repeat No. 16 "When a Blond Makes Up Her Mind" 2½ Min.



21 (Action) MISS DEANE STOPS DANCERS Cynical Scherzando (Axt) 1¼ Min.



22 (Title) **LOOKING AFTER HER**.....The Lonesomest Girl in Town (Dubin)2¼ Min.

Valse
mp-f
A musical staff in 3/4 time with a key signature of one flat (Bb). The melody starts with a double bar line and repeat sign. The dynamics are marked *mp-f*. Copyright 1925 Jack Mills.

NOTE: Play "PP" for long shot of dancers.

23 (Title) **THEN IF YOU STILL BELIEVE IN ME**.....A Night of Love (Spier)2 Min.

Valse mod^{to}
p-inf
A musical staff in 3/4 time with a key signature of one flat (Bb). The melody starts with a double bar line and repeat sign. The dynamics are marked *p-inf*. Copyright 1925 Harms Inc.

24 (Action) **LARGE BOWL IS LOWERED**Repeat No. 8 "Yo Te Amo"1½ Min.

Mod^{to}
A musical staff in 2/4 time with a key signature of one flat (Bb). The melody starts with a double bar line and repeat sign. The tempo is marked *Mod^{to}*.

25 (Action) **END OF SOLO DANCE**Good Mornin' (Kahn)1½ Min.

Mod^{to}
A musical staff in 2/4 time with a key signature of one flat (Bb). The melody starts with a double bar line and repeat sign. The tempo is marked *Mod^{to}*. Copyright 1925 J. H. Remick.

26 (Action) **DRESSING ROOM**Repeat Theme No. 5½ Min.

mod^{to}
A musical staff in 2/4 time with a key signature of one flat (Bb). The melody starts with a double bar line and repeat sign. The tempo is marked *mod^{to}*.

27 (Action) **MARTEL BREAKS RECORD**A Mysterious Event (Zamecnik)2 Min.

All^o mist.
A musical staff in 2/4 time with a key signature of one flat (Bb). The melody starts with a double bar line and repeat sign. The tempo is marked *All^o mist.*. Copyright 1925 Sam Fox Pub.

28 (Action) **MISS DEANE AND NOEL**By the Fireside (Helfand)4 Min.

And^{te} con moto
A musical staff in 2/4 time with a key signature of one flat (Bb). The melody starts with a double bar line and repeat sign. The tempo is marked *And^{te} con moto*. Copyright 1925 M. Baron.

29 (Action) **COLORED MAID KNEELS BY MISS DEANE**.....The Coons' Patrol (Lotter)1½ Min.

All^o
pp
A musical staff in 2/4 time with a key signature of one flat (Bb). The melody starts with a double bar line and repeat sign. The tempo is marked *All^o* and dynamics are *pp*. Copyright 1904 Hawkes & Sons.

30 (Title) **WHEN A MAN**Debutante (Rapee-Axt)1¾ Min.

mod^{to}
mf
A musical staff in 2/4 time with a key signature of one flat (Bb). The melody starts with a double bar line and repeat sign. The tempo is marked *mod^{to}* and dynamics are *mf*. Copyright 1923 Robbins Engel.

31 (Action) **COLORED MAID LEAVES ROOM**Repeat Theme No. 5.....2 Min.

Mod^{to}
A musical staff in 2/4 time with a key signature of one flat (Bb). The melody starts with a double bar line and repeat sign. The tempo is marked *Mod^{to}*.

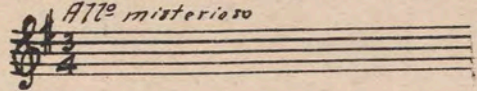
32 (Title) **THIS WAS TO BE CONSUELO'S**Repeat No. 8 "Yo Te Amo"½ Min.

Mod^{to}
A musical staff in 2/4 time with a key signature of one flat (Bb). The melody starts with a double bar line and repeat sign. The tempo is marked *Mod^{to}*.

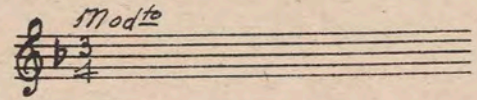
33 (Action) **MISS DEANE FAINTS**Dolores (Kay)1¾ Min.

And^{te} sost.
mp
A musical staff in 2/4 time with a key signature of one flat (Bb). The melody starts with a double bar line and repeat sign. The tempo is marked *And^{te} sost.* and dynamics are *mp*. Copyright 1925 Forster Music Co.

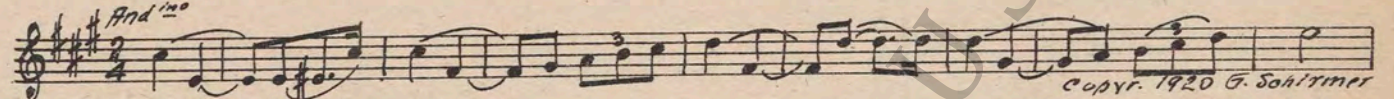
34 (Title) DISSATISFIED WITH Repeat No. 27 "A Mysterious Event" 1½ Min.



35 (Title) NOEL ANSON Repeat Theme No. 5 1¼ Min.



36 (Action) NOEL ENTERS ROOM Love Song (Wright) 1½ Min.

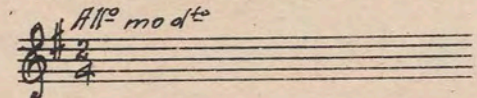


37 (Title) AT BONNARD'S Charleston (Johnson) 1 Min.

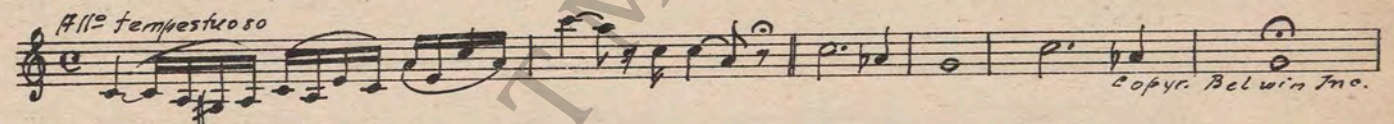


NOTE: Play "PP" for fade-outs.

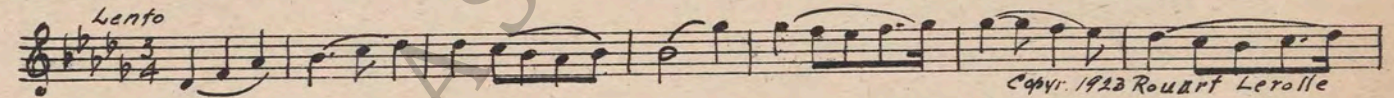
38 (Title) NOW FOR A GREATER SURPRISE Repeat No. 15 "Arabian Nights" ¾ Min.



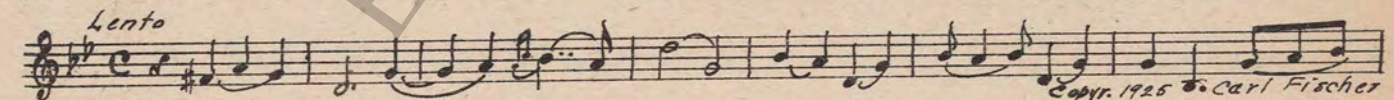
39 (Action) DARK SCENE Mournful Agitato (Hilse) ½ Min.



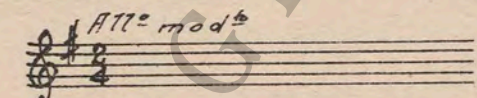
40 (Action) NOEL AND MISS DEANE IN TAXI Incantation (Chapelier) 4½ Min.



41 (Action) MISS DEANE ENTERS SICK ROOM Heart Throbs (Herbert) 1½ Min.



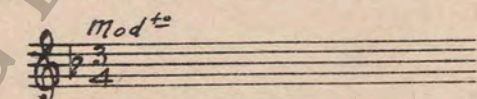
42 (Action) MISS DEANE STARTS TO DANCE Repeat No. 15 "Arabian Nights" 1¼ Min.



43 (Action) DANCER FADES OUT The Sacrifice (Zamecnik) 4 Min.



44 (Action) NOEL AND MISS DEANE Repeat Theme No. 5 1 Min.



THE END

Country of Origin, U. S. A.

Complete orchestrations and single piano parts of each separate number contained hereon, can be purchased from CAMEO MUSIC SERVICE CORPORATION, 315-317 West 47th Street, New York City.

YS:1725:2