

Thematic Music



Cue Sheet

M. J. MINTZ (PATENT)
JULY 31, 1923.

ADOLPH ZUKOR and JESSE L. LASKY
present

GEORGE BANCROFT

in
"THE DOCKS OF NEW YORK"

with

Betty Compson and Baclanova

A Josef von Sternberg Production

Story and screen play by Jules Furthman

Suggested by John Monk Saunders' "The Dockwalloper"

B. P. Schulberg, General Manager, West Coast Productions

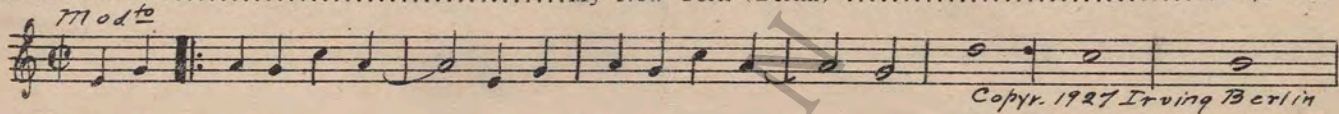
Compiled by James C. Bradford

Footage 7202 feet

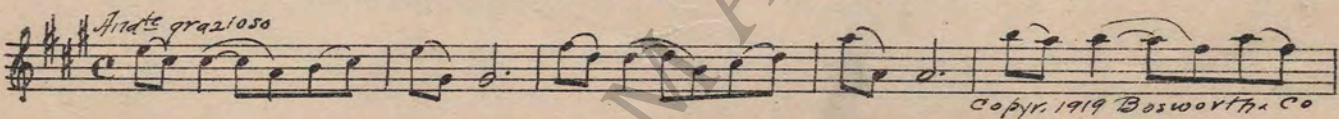


A Paramount Picture

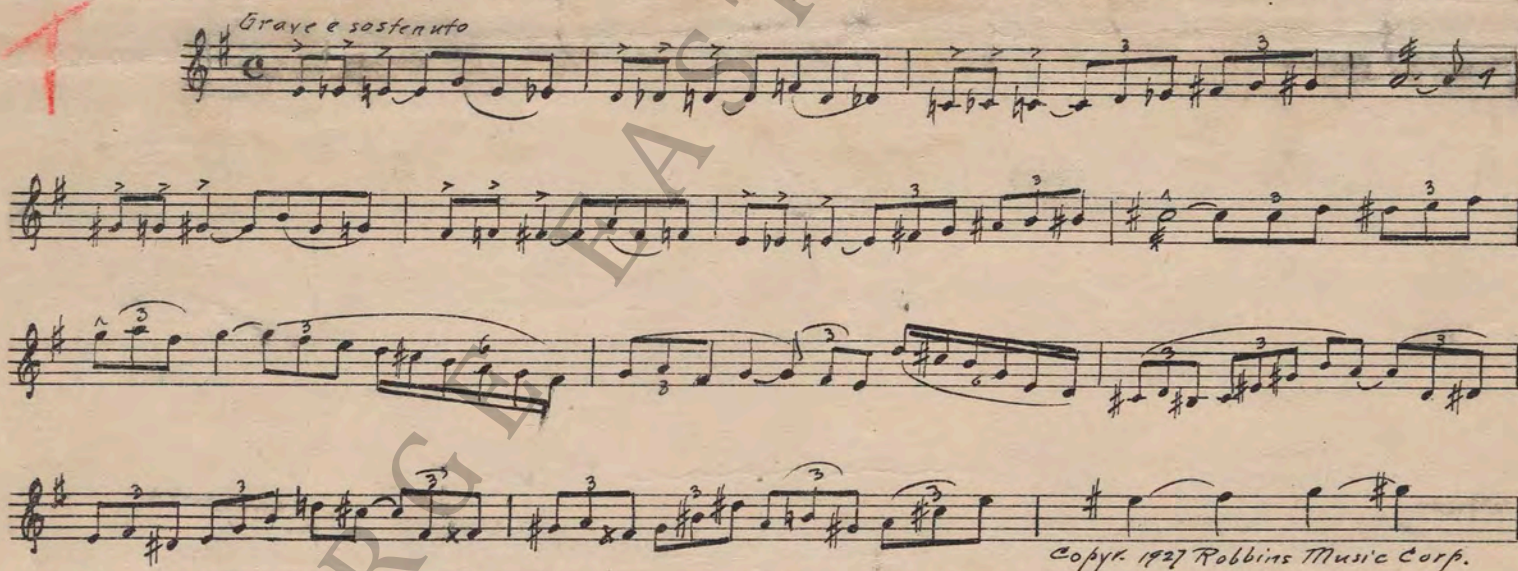
1 AT SCREENING My New York (Berlin) 1/2 Min.



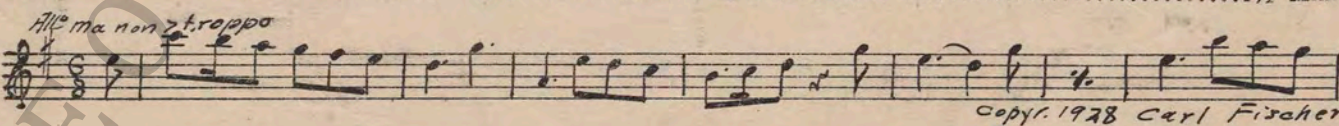
2 (Action) STROKE HOLE OF SHIP In the Moonlight (Ketelbey) 2 3/4 Min.



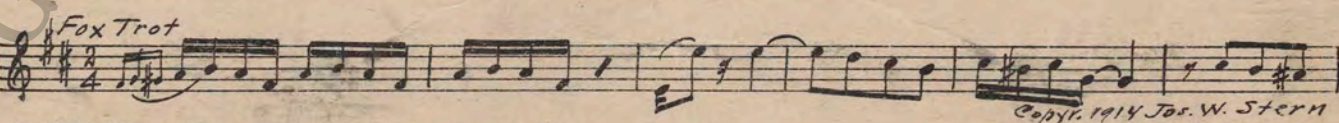
3 (Title) PICK UP THAT WASTE CHIEF THEME: The Captive (Savino) 3/4 Min.



4 (Title) HE'S THE MOST EVEN TEMPERED GUY The Jovial Rogue (Bradford) 1 1/2 Min.



5 (Title) THE SANDBAR Castle Perfect Trot (Europe) 3 Min.



NOTE: Play as Piano Solo imitating automatic Piano.

D-Night and Fog -

best music

pinpoint

- 6 (Title) NIGHT AND FOG Boola-Boo (Friml) 1 Min.
Modto

 Copyright 1917 G. Schirmer
- 7 (Action) GIRL JUMPS INTO RIVER Appassionata (Clutsam) 1½ Min.
 NOTE: Play very quietly and "P".
Allo son. 2/16

 Copyright 1926 Hawkes & Son
- 8 (Action) CHIEF AND BLONDE Repeat Chief Theme No. 3 ½ Min.
Grave e sostenuto

 Copyright 1926 Hawkes & Son
- 9 (Action) BILL APPEARS AT BAR-ROOM WITH GIRL IN HIS ARMS Dramatic Appassionato (Ciganeri) 2¾ Min.
Andte con moto

 Copyright 1925 Belwin Inc
- 10 (Action) BILL ENTERS BAR-ROOM ALONE Dizzy Fingers (Confrey) 1¼ Min.
Presto

 Copyright 1924 Jack Mills
- 11 (Action) FLASH TO MAE SITTING UP IN BED Air de Ballet (Massenet) 1¼ Min.
 NOTE: Play as Piano Solo imitating automatic Piano.
Lento myst.

 Copyright 1901 Carl Fischer
- 12 (Action) BILL IN FRONT OF CLOTHES SHOP Serenata (Tarenghi) 3¾ Min.
 NOTE: Play first part only.
All. modto

 Copyright 1914 G. Schirmer
- 13 (Action) BILL LEAVES ROOM Susie (De Sylva) 1¼ Min.
Fox Trot

 Copyright 1925 Shapiro, Bernstein & Co
- 14 (Action) MAE ENTERS Rufenreddy (Bargy) 2¼ Min.
 NOTE: Play as Piano Solo imitating automatic Piano.
Fox Trot

 Copyright 1923 Sam Fox
- 15 (Title) YOU MAY BE Warriors Bold (Joels) 2½ Min.
 NOTE: Continue as automatic Piano Solo.
Agitato con moto

 Copyright 1927 Sonnemann Mus. Co
- 16 (Title) GEE, YOU'RE STRONG Sam Fox Trot (Howard) 1¼ Min.
Modto

 Copyright 1925 Sam Fox
- NOTE: Play as Piano Solo imitating automatic Piano "PP".

40

T

drum

guitar

piano

drum

17 (Action) BILL TAKES SEAT AGAIN LOVE THEME: Valse Triste (Vecsey) 1 3/4 Min

2

Allto

Copyright 1927 Robbins Music Corp.

Love
Themes

18 (Title) AND COME TO THINK That Bran' New Gal O' Mine (Akst) 1 Min.

Fox Trot

Copyright 1923 M. Witmark & Sons

19 (Title) NOTE: Play as Piano Solo imitating automatic Piano as previously. I'M GOING TO DO RIGHT BY OUR NELL Cheer Up (Kaufman) 2 3/4 Min.

One Step

Copyright 1927 Irving Berlin

20 (Title) NOTE: Orchestra play, but Piano catch short bit as keyboard shows. ARE YOU GOING TO QUEER OUR FUN? Elopement (Carrozini) 3/4 Min.

Vivace

Copyright 1926 Sonnemann Music Co

21 (Title) LET THE OLD FUSS GO Wedding Blues (Friml) 1 Min.

To giusto

Copyright 1919 G. Schirmer

22 (Title) DEARLY BELOVED Pangs of Love (Carrozini) 2 3/4 Min.

Andino

Copyright 1926 Sonnemann Music Co

23 (Action) BILL EMBRACES MAE The Awakening (Zamecnik) 1 1/4 Min.

Appassionato

Copyright 1924 Sam Fox

24 (Action) MAE AND BLONDE EMBRACE Repeat Love Theme No. 17 1 1/4 Min.
 25 (Title) WHO SAYS I WANT TO GET RID OF HER Repeat No. 12 "Serenata" 1 1/4 Min.
 26 (Action) MAE AND BILL STANDING ON PLATFORM Repeat Love Theme No. 17 3/4 Min.
 27 (Title) MORNING Misterioso-Patetico (Brunelli) 2 Min.

Modto

Copyright 1928 Robbins Music Corp.

28 (Action) CHIEF SITTING AT TABLE Repeat Chief Theme No. 3 1 1/4 Min.
 29 (Action) MAE GETS OUT OF BED Agitato Lamentoso (Pasternack) 2 Min.

Molto Allto

Copyright 1928 Irving Berlin

slow
down
and

D. After Blond is seen at Door

30 (Action) AFTER BLONDE IS SEEN AT DOORUnfinished Symphony (Schubert)3¾ Min.

All. mod.º

Copyr. Carl Fischer

31 (Action) PATROL WAGON DOORS CLOSEAmorous Adventure (Bradford)3¾ Min.

Tranquillo

Copyr. 1928 Sonnemann Mus. Co

32 (Title) GET A MOVE ON, TIME'S UPShannon River (Friml)2 Min.

And.º

Copyr. 1928 E. F. Kalmus

33 (Action) MAE STARTS TO THREAD NEEDLETrees (Rasbach)2¾ Min.

And.º

Copyr. 1925 G. Schirmer

34 (Action) MAE TURNS ANGRILY ON BILLAndante from "Pathetique Symphony No. 6" (Tschaikowsky) . . .1½ Min.

And.º

Copyr. Hawkes & Son

35 (Action) HULL OF SHIP APPEARSBurlesco Pomposo (Lowitz)1½ Min.

Pesante

Copyr. 1927 Irving Berlin

36 (Action) CHIEF ENTERS HOLDRepeat Chief Theme No. 31 Min.

Grave e sostenuto

T

37 (Action) BILL WALKS FROM HOLDThe Spectre (Engleman)1 Min.

And.º mosso

Copyr. 1927 Bosworth & Co

38 (Action) NIGHT COURTBerceuse (Jarnefelt)1¾ Min.

Largo

Copyr. 1910 Carl Fischer

39 (Action) BILL ENTERS COURTDay of Doom (Joels)1½ Min.

And.º

Copyr. 1927 Sonnemann Mus. Co

40 (Title) SIXTY DAYS WON'T BE A LONG CRUISE....Repeat Love Theme No. 17½ Min.

All.º

2

Country of Origin, U. S. A.

THE END

Complete orchestrations and single piano parts of each separate number contained herein, can be purchased from CAMEO MUSIC SERVICE CORPORATION, 315-317 WEST 47TH STREET, NEW YORK CITY.

95:1740:1