

425
5/16-17-18

Thematic Music Cue Sheet

M. J. MINTZ (PATENT)
JULY 31, 1923.



ADOLPH ZUKOR and JESSE L. LASKY
present
ESTHER RALSTON
in
"FASHIONS FOR WOMEN"

with
Raymond Hatton and Einar Hanson

Directed by Dorothy Arzner
From the play "The Girl of the Hour" by Gladys B. Unger from the
French of Paul Armont and Leopold Marchand
Screen play by Percy Heath
Adaptation by Jules Furthman and Herman J. Mankiewicz
Compiled by James C. Bradford
Footage 6296 feet

A Paramount Picture

1 AT SCREENING Petite Suite de Concert (Taylor) 3/4 Min.

Musical notation for Petite Suite de Concert (Taylor). Tempo: *All.^o con brio*. Copyright: 1911 by Hawkes & Son.

2 (Title) THE PARIS OF FASHION A Mon Passage (Franceschi) 1 Min.

Musical notation for A Mon Passage (Franceschi). Tempo: *All.^o $\frac{2}{4}$* . Dynamics: *ff*. Copyright: J. Franceschi.

3 (Title) ONLY THREE MEN KNEW Incid. Symphony No. 35 (Kempinski) 1 1/4 Min.

Musical notation for Incid. Symphony No. 35 (Kempinski). Tempo: *All.^o Mod.^o*. Copyright: 1927 Play Music Co.

4 (Action) SAM ENTERS BOUDOIR Chez Mere Grand (Mouton) 3/4 Min.

Musical notation for Chez Mere Grand (Mouton). Tempo: *Allegro moder.*. Dynamics: *pp*. Includes markings: *8va*, *Loco*. Copyright: J. Yecsk.

5 (Action) CELESTE REMOVES BANDAGES FROM FACE SAM THEME: Humoresque (Tschaikowsky) 2 1/4 Min.

Musical notation for SAM THEME: Humoresque (Tschaikowsky). Tempo: *All.^o $\frac{2}{4}$* . Copyright: 1922 Carl L. Fisher.

6 (Action) SAM APPEARS ON BALCONY Lost A Wonderful Girl (Hanley) 1/2 Min.

Musical notation for Lost A Wonderful Girl (Hanley). Tempo: *Lento*. Copyright: 1922 Shapiro Bernstein & Co.

7 (Title) AT THE CAFE Murmuring Breezes (Gillet) 2 Min.

Musical notation for Murmuring Breezes (Gillet). Tempo: *All.^o $\frac{2}{4}$* . Dynamics: *pp*. Copyright: 1926 Manus Music Co.

8 (Action) TWO GENTLEMEN ENTER Love's Golden Arrows (Smith) 1 1/2 Min.

Musical notation for Love's Golden Arrows (Smith). Tempo: *And.^{te}*. Dynamics: *mf*. Copyright: 1922 Selwyn Inc.

9 (Action) SAM ENTERS Repeat Sam Theme No. 5 3 1/4 Min.

Musical notation for Repeat Sam Theme No. 5. Tempo: *All.^o $\frac{2}{4}$* .

10 (Action) HAT GIRL WITH SMOKING SILK HAT..... LOLO THEME: Thinking of You (Donaldson) ¾ Min.

Musical score for item 10, featuring a single staff with a treble clef, a key signature of one sharp (F#), and a common time signature (C). The tempo marking is *Mod^{to}*. The score includes a repeat sign with first and second endings. Copyright information at the bottom right reads "Cop. 1926 Leo Feist".

11 (Action) TWO MEN SITTING ON DIVAN Eccitamento (Retlaw) 1½ Min.

Musical score for item 11, featuring a single staff with a treble clef, a key signature of two sharps (F# and C#), and a 2/4 time signature. The tempo marking is *All^o Agitato*. Copyright information at the bottom right reads "Copyr. 1925 Feature M.P. Co".

12 (Action) SAM SEES LOLO—SPEAKS TO HER Repeat Sam Theme No. 5 1¾ Min.

Musical score for item 12, featuring a single staff with a treble clef, a key signature of two sharps (F# and C#), and a 2/4 time signature. The tempo marking is *All^o F^o*. The score is mostly blank, indicating a repeat of a previous theme.

NOTE: Catch effect as Lolo slaps Sam's face.

13 (Title) THERE IS A YOUNG WOMAN Miss Dolly Dollars (Herbert) 2¼ Min.

Musical score for item 13, featuring a single staff with a treble clef, a key signature of two sharps (F# and C#), and a 2/4 time signature. The tempo marking is *All^o Mod^{to}*. Copyright information at the bottom right reads "copy 1918 M. G. M. Sons".

14 (Action) LOLO PUSHED OUT OF ROOM Andantino (Lemare) ½ Min.

Musical score for item 14, featuring a single staff with a treble clef, a key signature of one sharp (F#), and a common time signature (C). The tempo marking is *And^{ante}*. The dynamic marking is *mp*. Copyright information at the bottom right reads "Cop. 1926 Carl Fischer".

15 (Action) LOLO SEES SAM AND GIRL AT DOOR En Chevauchant (Gillet) 2¾ Min.

Musical score for item 15, featuring a single staff with a treble clef, a key signature of one sharp (F#), and a 3/8 time signature. The tempo marking is *All^o*. Copyright information at the bottom right reads "Copyr. 1926 Manus M. Co".

16 (Action) LOLO TIES GIRL Elopement (Carrozzini) 1¼ Min.

Musical score for item 16, featuring a single staff with a treble clef, a key signature of one sharp (F#), and a 2/4 time signature. The tempo marking is *Vivace*. The dynamic marking is *p*. Copyright information at the bottom right reads "Copy 1926 Sommermann & Co".

17 (Action) LOLO APPEARS ON BALCONY Hello Baby (Whiting) 1¼ Min.

Musical score for item 17, featuring a single staff with a treble clef, a key signature of one sharp (F#), and a common time signature (C). The tempo marking is *Mod^{to}*. Copyright information at the bottom right reads "Copy 1926 Jerome H. Remick & Co".

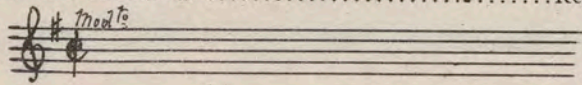
18 (Action) SAM RUSHES FROM ROOM Thrills (Sanders) ¾ Min.

Musical score for item 18, featuring a single staff with a treble clef, a key signature of one sharp (F#), and a 2/4 time signature. The tempo marking is *Livez*. The dynamic marking is *mf*. Copyright information at the bottom right reads "Copy 1925 Sanders".

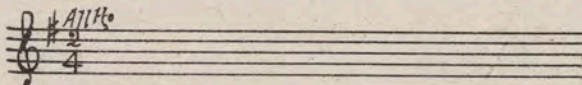
19 (Title) LOLO'S FIRST DUTY WAS TO SLEEP Brise du Soir (Gillet) 1½ Min.

Musical score for item 19, featuring a single staff with a treble clef, a key signature of one sharp (F#), and a 2/4 time signature. The tempo marking is *Tempo di Valse*. Copyright information at the bottom right reads "Cop 1913 Paul Decourcotte".

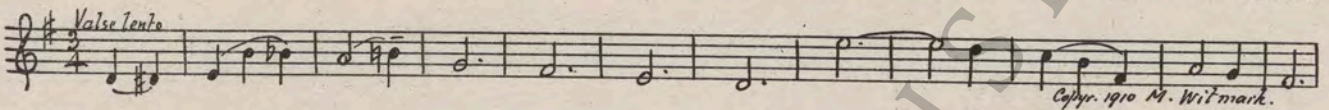
20 (Action) RAOUL ENTERS Repeat Lolo Theme No. 10 3½ Min.



21 (Action) SAM ENTERS Repeat Sam Theme No. 5 ½ Min.



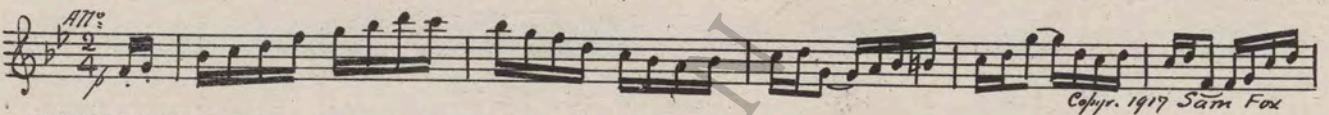
22 (Action) LOLO POKES HAND OUT OF DOOR..... I'm Falling In Love With Someone (Herbert) ½ Min.



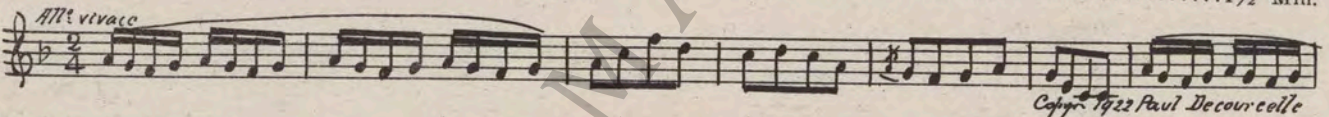
23 (Title) I OUGHT TO CUT YOUR SALARY Air de Ballet (Herbert) 1¼ Min.



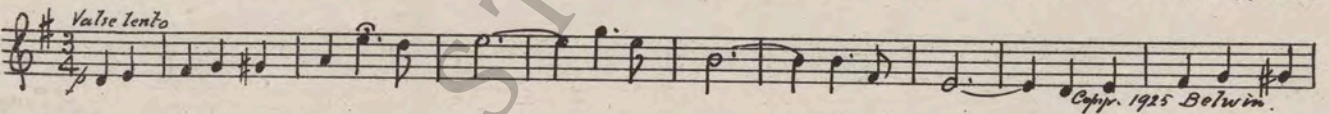
24 (Title) ALONE WITH HER DREAMS Marionette (Arndt) 3 Min.



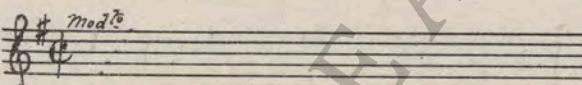
NOTE: Catch popping of flash-lights for pictures.
25 (Action) RAOUL RECEIVES WIRE Dans la Foret (Gillet) 1½ Min.



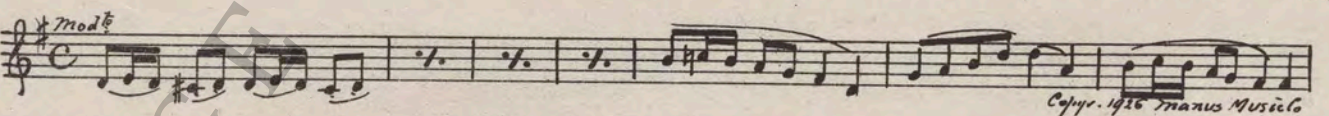
26 (Action) CAMERA MEN EXIT Valse Dramatic (Rapee) 2¾ Min.



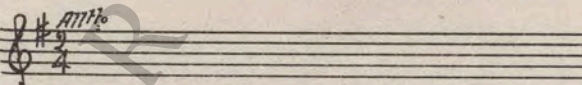
27 (Title) I'M SORRY Repeat Lolo Theme No. 10 ½ Min.



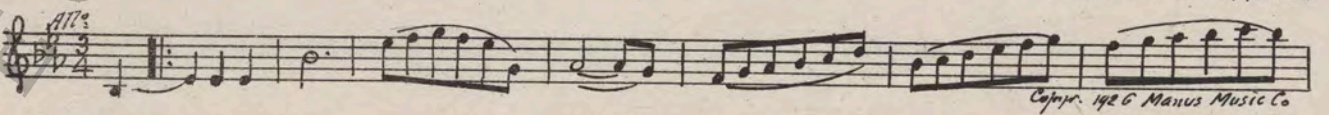
28 (Title) FAR FROM PARIS Histoire de Blondinette (Gillet) 1 Min.



29 (Action) SILHOUETTE OF CARD GAME Repeat Sam Theme No. 5 1¼ Min.



30 (Title) THE NIGHT OF THE FASHION FETE Vous dites Marquise? (Gillet) 1¼ Min.



31 (Action) LOLO SEES REFLECTION IN MIRROR..... Babillage (Gillet) 1½ Min.



32 (Action) RAOUL ENTERS ROOMReproach (Zamecnik)3¼ Min.

NOTE: Start at the Cello Solo.

33 (Title) THE FASHION FETEVivienne (Finck)1 Min.

34 (Action) LIGHTS OUTToy Soldiers Parade (Ring-Hager)2¼ Min.

35 (Action) CELESTE AND DUKESpring Flowers (Wood)½ Min.

36 (Action) FLASH-BACK TO FASHION SHOWLonesome Waltz (Wendling)¾ Min.

37 (Action) SAM CALLED TO TELEPHONE BY CELESTEScherzando Hurry (Frey)½ Min.

38 (Action) FLASH-BACK TO REVIEWTing-A-Ling (Little)¾ Min.

39 (Action) GIRLS MARCH FORWARDMarch of the Mannikens (Onivas)1¼ Min.

40 (Title) THE GOLDEN APPLE IS AGAIN REWARDEDRepeat No. 32 "Reproach"2½ Min.

41 (Title) A MAN WHOSome Day (Polla)¾ Min.

42 (Action) RAOUL RECOGNIZES LOLORepeat Lolo Theme No. 10¾ Min.

THE END

Country of Origin, U. S. A.

Orchestrations or single piano parts of each separate musical selection suggested hereon, can be purchased from CAMEO MUSIC SERVICE CORPORATION, 315-317 WEST 47TH STREET, NEW YORK CITY.

95:1773:1