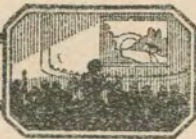


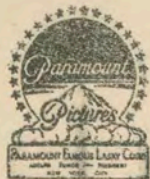
march

Thematic Music



Cue Sheet

M. J. MINTZ (PATENT)
JULY 31, 1923.



ADOLPH ZUKOR and JESSE L. LASKY
present
FAY WRAY and GARY COOPER
in
"THE FIRST KISS"

A Rowland V. Lee Production
From the story, "Four Brothers" by Tristram Tupper
Adaptation and screen play by John Farrow
B. P. Schulberg, Associate Producer
Compiled by James C. Bradford
Footage 6134 feet

A Paramount Picture

1 AT SCREENING THEME: The First Kiss (Robinson) 1 Min.

Valse mod^{to}

Copyright 1928 Waterson, Berlin + Snyder.

2 (Title) OFF THE COAST Au fil de l'eau (Gillet) 1 1/4 Min.

St.

Father

Copyright 1909 Paul Deconcelle

3 (Title) THE RUN DOWN HOME Homeland (Huerter) 1 1/2 Min.

Musical Essay

Boys playing

mod^{to}

Copyright 1926 B. Schermer.

4 (Action) CLOSE-UP OF DRUNKEN FATHER On the 'Gin 'Gin 'Ginny Shore (Donaldson) 1 Min.

Light

Stowly

Copyright 1921 Shapiro Bernstein.

5 (Title) NOTE: Play in drunken burlesque style—"PP".
HURRY IN AND GET DINNER Midinette (Marling) 3 1/2 Min.

Autumn

glory

+ Appas.

Valse lento

Copyright 1923 Carr Caf. Music Co.

6 (Action) ANNA APPEARS HURRYING DOWN WHARF. Frolic (Borch) 1¼ Min.

Woodland Sprites

Musical notation for item 6: Treble clef, key signature of two sharps (F# and C#), 6/8 time signature. Tempo marking: *All^o scherz.* Copyright: 1927 Hawkes & Son.

7 (Action) BROTHER RUSHES TOWARD WATER Sarabande Perpetuelle (Bradford) ½ Min.

Short Hurry

Musical notation for item 7: Treble clef, key signature of one sharp (F#), 4/4 time signature. Tempo marking: *All^o*. Copyright: 1928 Carl Fischer.

8 (Action) BOYS GATHER ABOUT FATHER A Keltic Lament (Foulds) ¾ Min.

Andante

Musical notation for item 8: Treble clef, key signature of one sharp (F#), 4/4 time signature. Tempo marking: *Lento*. Copyright: 1916 Hawkes.

9 (Action) ANNA PLAYING WITH PUPPIES Jack In the Box (Bierman) 1¾ Min.

mill stream

Musical notation for item 9: Treble clef, key signature of one flat (Bb), 4/4 time signature. Tempo marking: *Mod^{to}*. Copyright: 1927 American Composers.

10 (Title) SAILOR FOLK HAVE A SAYIN' Repeat Theme No. 1 1¾ Min.

+

Musical notation for item 10: Treble clef, key signature of one flat (Bb), 4/4 time signature. Tempo marking: *Valso mod^{to}*.

11 (Action) INSERT—"PUBLIC CEMETARY" Chanson Melancholique (Collinge) 1¼ Min.

Because

Musical notation for item 11: Treble clef, key signature of two flats (Bb and Eb), 3/4 time signature. Tempo marking: *And^{te}*. Copyright: 1920 Belwin Inc.

12 (Action) INTERIOR OF HOME Funny Faces (Ring-Hager) ¾ Min.

6/8

Musical notation for item 12: Treble clef, key signature of one flat (Bb), 6/8 time signature. Tempo marking: *Mod^{to}*. Copyright: 1926 Sam Fox Pub.

13 (Title) POOR WHITE TRASH La Rixe (Andrieu) 3¼ Min.

appears

Musical notation for item 13: Treble clef, key signature of one flat (Bb), 4/4 time signature. Tempo marking: *All^o*. Copyright: 1924 Andrieu.

14 (Title) A DRUNKEN BUM Excitement (Breil) 1¼ Min.

night scene - Sad

Hurry

Musical notation for item 14: Treble clef, key signature of one flat (Bb), 4/4 time signature. Tempo marking: *Molto Agitato*. Copyright: 1924 Sonnemann Music Co.

15 (Title) GET YOUR DINNER Repeat No. 3 "Homeland" 1¼ Min.

Angelica

Musical notation for item 15: Treble clef, key signature of one flat (Bb), 4/4 time signature. Tempo marking: *Mod^{to}*.

16 (Action) ANNA IN GARDEN Repeat Theme No. 1 2¼ Min.

T.G.E.R.

Musical notation for item 16: Treble clef, key signature of one flat (Bb), 4/4 time signature. Tempo marking: *Valso mod^{to}*.

17 (Action) NIGHT In a Shady Nook (Hildreth) 2 Min.

H.

Musical notation for item 17: Treble clef, key signature of one sharp (F#), 4/4 time signature. Tempo marking: *Mod^{to} con moto*. Copyright: Walter Jacobs.

18 (Action) BOAT STARTS Over the Waters (Hoffmann) ¾ Min.

Brook
Andino
 Musical notation for 'Over the Waters' in treble clef, 3/4 time, key of G major. The melody is written on a single staff.
Copyright 1909 G. Schirmer

19 (Title) WON'T THERE BE A MATE Repeat Theme No. 1 1¾ Min.

T
Valse modto
 Musical notation for 'WON'T THERE BE A MATE' in treble clef, 3/4 time, key of G major. The melody is written on a single staff.

20 (Action) ANNA ENTERS HOME NOTE: Play "PP" con sordini, strings only. Romantique (Gabriel Marie) 1¼ Min.

Drum
Allo risoluto
 Musical notation for 'ANNA ENTERS HOME' in bass clef, 3/4 time, key of G major. The melody is written on a single staff.
Copyright 1927 S. Chapelier

21 (Title) IN A WEEK MULLIGAN NOTE: Start quietly and work up for dramatic sequence. Repeat No. 3 "Homeland" 2 Min.

Garden
Modto
 Musical notation for 'IN A WEEK MULLIGAN' in treble clef, 3/4 time, key of G major. The melody is written on a single staff.

22 (Action) HULL OF SHIP APPEARS Scène Dramatique (Benoit) 2½ Min.

Mist
Surging
Allo agitato
 Musical notation for 'HULL OF SHIP APPEARS' in treble clef, 3/4 time, key of G major. The melody is written on a single staff.
Manuscript Music Co

23 (Action) ANNA AND MULLIGAN MEET Repeat Theme No. 1 2 Min.

T
Valse modto
 Musical notation for 'ANNA AND MULLIGAN MEET' in treble clef, 3/4 time, key of G major. The melody is written on a single staff.

24 (Action) MULLIGAN SEATED AT TABLE ALONE NOTE: Play very plaintive—Violin or Cello Solo con sordini, strings only. Gruesome Nights (Joels) (A) ¾ Min.

Third
degree
Andto mosso
 Musical notation for 'MULLIGAN SEATED AT TABLE ALONE' in treble clef, 3/4 time, key of G major. The melody is written on a single staff.
Copyright 1928 Sonnemann Music Co

25 (Action) THREE STACKS OF BILLS SEEN ON TABLE.. NOTE: Play "P"—first strain only. Chanson Algerian (Bradford) 2¾ Min.

St. then
Andante
Andto
 Musical notation for 'THREE STACKS OF BILLS SEEN ON TABLE' in treble clef, 3/4 time, key of G major. The melody is written on a single staff.
Copyright 1926 Sam Fox

26 (Action) INSERT—"TALBOT SHIP YARD" THEME: The First Kiss (Robinson) (Verse) 2 Min.

Th.
Valse modto
 Musical notation for 'TALBOT SHIP YARD' in treble clef, 3/4 time, key of G major. The melody is written on a single staff.
Copyright 1928 Waterson, Berlin & Snyder

27 (Title) THE SEASONS BECAME Alma Mater from "College Life" (Hinrichs) 2 Min.

College
Andto
 Musical notation for 'THE SEASONS BECAME' in treble clef, 3/4 time, key of G major. The melody is written on a single staff.
Copyright 1912 G. Schirmer

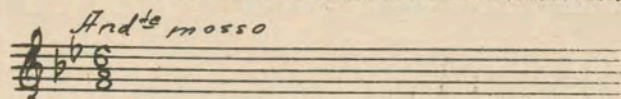
28 (Action) MULLIGAN PAINTING SHIP Reverie d'Amour (D'Aquin) ½ Min.

Andante
Andino
 Musical notation for 'MULLIGAN PAINTING SHIP' in treble clef, 3/4 time, key of G major. The melody is written on a single staff.
Copyright 1925 Sonnemann M. Co

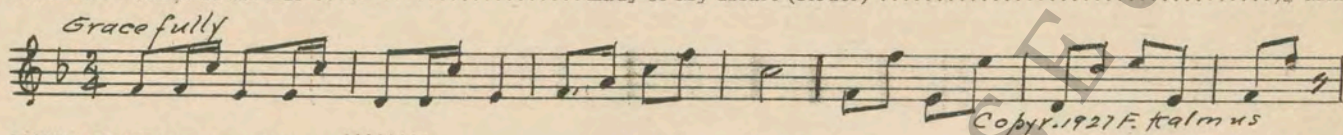
29 (Action) VISION OF ANNA Repeat Theme No. 1 1 Min.

T
Valse modto
 Musical notation for 'VISION OF ANNA' in treble clef, 3/4 time, key of G major. The melody is written on a single staff.

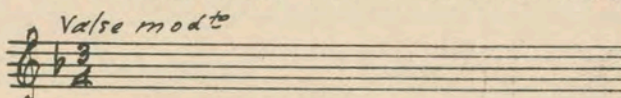
30 (Action) INSERT—BOOK OF ACCOUNTS Repeat No. 24 "Gruesome Nights" ½ Min.



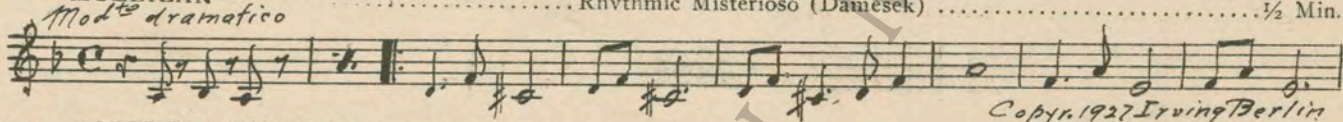
31 (Action) INSERT—NEWSPAPER Lady of My Heart (Roder) 1¼ Min.



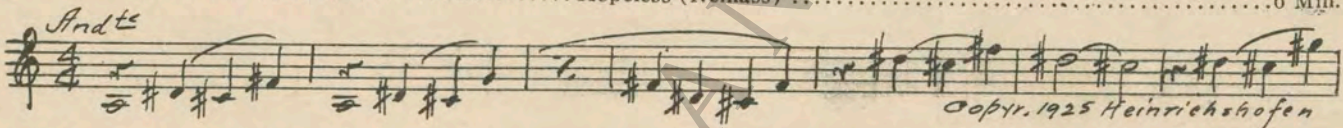
32 (Action) ANNA ENTERS CABIN Repeat Theme No. 1 3 Min.



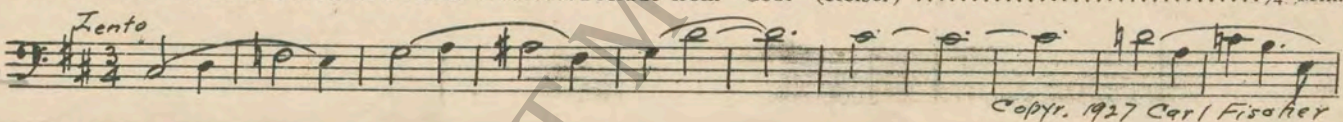
33 (Action) OFFICERS ENTER CABIN—ARREST MULLIGAN NOTE: Change tempo for confession of Mulligan to expressivo and play as Cello Solo. Rhvthmic Misterioso (Damesek) ½ Min.



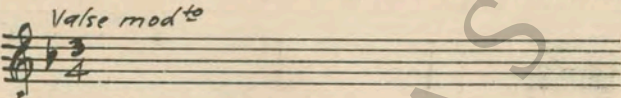
34 (Title) IN THE FIRST FEW HOURS Hopeless (Neinass) 6 Min.



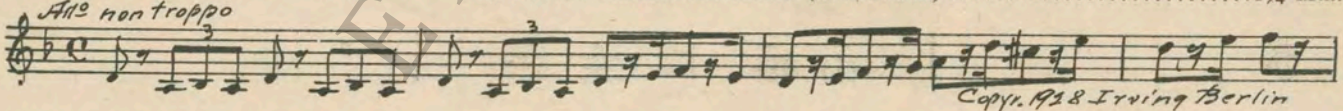
35 (Title) YOUR HONOR, THE PROSECUTION Prelude from "Gobi" (Reiser) ¾ Min.



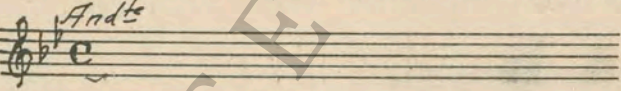
36 (Title) I LOVE YOU, MULLIGAN Repeat Theme No. 1 ¼ Min.



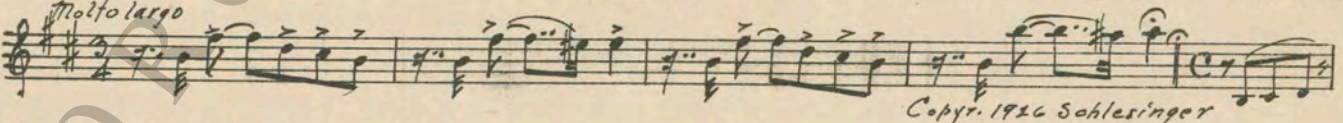
37 (Action) INSERT—TELEGRAM NOTE: Play strings only in lower register. A Spookv Adventure (Pasternack) 1¼ Min.



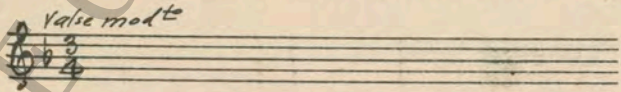
38 (Title) MULLIGAN, WHEN I WAS Repeat No. 25 "Chanson Algerian" 1 Min.



39 (Action) FLASH TO COURT ROOM Andante Appassionato (Becce) 3¾ Min.



40 (Title) I PROMISE HE'LL NEVER ESCAPE Repeat Theme No. 1 1 Min.



THE END

Theme Song "The First Kiss" published by Waterson, Berlin & Snyder, 1571 Broadway, New York City. Write publishers for organ slides and specially prepared orchestration. Country of Origin, U. S. A.

Complete orchestrations and single piano parts of each separate number contained hereon, can be purchased from CAMEO MUSIC SERVICE CORPORATION, 315-317 WEST 47TH STREET, NEW YORK CITY.

95:1794:1