

Thematic Music Cue Sheet

ADOLPH ZUKOR and JESSE L. LASKY

present

POLA NEGRI in AN ERNST LUBITSCH PRODUCTION "FORBIDDEN PARADISE"

with

Rod La Rocque, Adolphe Menjou, Pauline Starke

From the play "The Czarina" by Lajos Biro and Menyhert Lengyel

Screen play by Agnes Christine Johnston and Hans Kraly

Music compiled by James C. Bradford

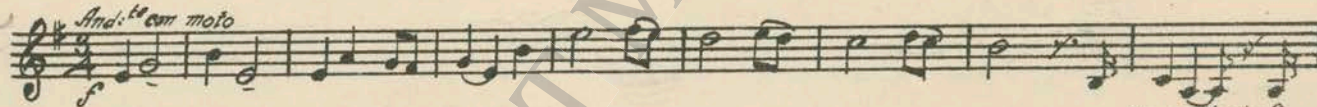
Footage 7543 feet



A Paramount Picture

Scenery includes

- 1 AT SCREENING ... Vicissitudes et Triomphe (Gabriel-Marie) ... 1 Min.



NOTE: Play Trio "FF" for opening.

Manus Music Co.

- 2 (Title) ALTHOUGH HER KINGDOM ... Prelude (Jarnfelt) ... 2 1/4 Min.



Copyr. 1918, by G. Schirmer

- 3 (Title) POLA NEGRI AS CATHERINE ... Les Precieuses (Gabriel-Marie) ... 2 3/4 Min

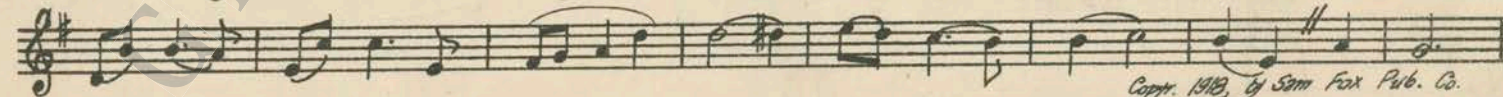
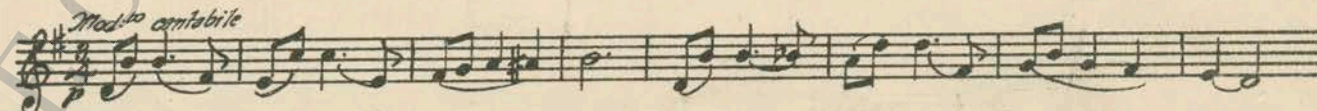


- 4 (Title) FOR A LONG TIME REBELLION ... An Argument (Breil) ... 1 1/2 Min.



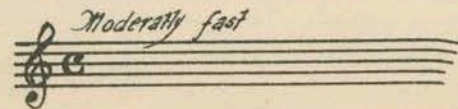
Copyr. 1924, by Sammam Music Co.

- 5 (Title) LIEUTENANT ALEXEI CZERNY ... LOVE THEME: Heart of Mine (Smith) ... 1 1/4 Min.



Copyr. 1918, by Sam Fox Pub. Co.

- 6 (Action) ALEXEI OPENS WINDOW—HEARS PLOTTERS ... Repeat No. 4 "An Argument" ... 1 Min.



7 (Action) NIGHT SCENE IN WOODS Dance of the Furies (von Gluck).....2½ Min.

Pizz

Copyright by Sonnemann Music Co.

8 (Action) AUTO STOPS AT BOUNDRY POST Zuleima (Borch)1¼ Min.

All.º mod.º

Copyright 1922, by Oliver Ditson Comp.

9 (Title) THE NEXT MORNING THE QUEENLa Presentation (Gabriel-Marie)3 Min.

And.º

Manus Music Co.,

10 (Title) AN OFFICER WANTS TO SEEAgitato a la Valse (Savino).....2 Min.

All.º Agitato

Copyright 1924, by Robbins-Engel

11 (Action) QUEEN READINGRustic Allegro (Savino)1¼ Min.

All.º Mod.º

Copyright 1923, by J. Schirmer, Inc.

12 (Action) OFFICERS ENTERDecevant Mirage (Gabriel-Marie)3 Min.

And.º poco rit.

Largo

NOTE: Timpany roll ad lib for argument.

13 (Action) COURTYARDNibelungen March (Wagner) Trio only.....1 Min.

Erlebnis Harmonie

Copyright 1916, by Ernst Pascher

14 (Title) THERE IS A REBELLION ON THEGavotte (Sgambati)2 Min.

Molto Mod.º

Sonnemann Music Co.

15 (Title) YOU ARE WOUNDEDCATHERINE THEME: Sinistra (Schultze)1¼ Min.

Paise lente

Copyright 1924, by Carl Fischer.

NOTE: Play "P" strings only, senza vibrato.

16 (Title) HIS EXCELLENCY Smiles (Somerville) 2¾ Min.

All. to Mod. to
 Musical notation for 'His Excellency' in G major, 2/4 time, starting with a piano (p) dynamic. The melody is written on a single staff.
Copy. 1914, by Hawkes & Son.

17 (Title) WE HAVE FOUND THE THIEF Merry Cavaliers (Srawley) 2 Min.

Sorid animation
 Musical notation for 'We Have Found the Thief' in G major, 2/4 time, starting with a mezzo-forte (mf) dynamic.
Copy. 1914, by Geo. H. Sanders.

18 (Title) ALEXEI HAS PROMISED Repeat Love Theme No. 5 1½ Min.

Mod. to cantabile
 Musical notation for 'Alexei Has Promised' in G major, 2/4 time, starting with a mezzo-forte (mf) dynamic. The notation is mostly blank with some notes.

NOTE: Play "PP" con sordini, strings only.

19 (Action) OFFICERS APPEAR IN GARDEN King's Hussars (Leonard) ¾ Min

Tempo di Marcia
 Musical notation for 'Officers Appear in Garden' in G major, 2/4 time, starting with a mezzo-forte (mf) dynamic.
Copy. 1910, by Ross Samarinski.

20 (Action) CATHERINE AT TABLE Mignonette (Savino) ¾ Min

And: no mosso
 Musical notation for 'Catherine at Table' in G major, 2/4 time, starting with a mezzo-forte (mf) dynamic.
Copy. 1912, by The Boston Music Co.

21 (Action) CATHERINE DROPS WINE GLASS Repeat Catherine Theme No. 15 2¼ Min

Paise lento
 Musical notation for 'Catherine Drops Wine Glass' in G major, 2/4 time, starting with a piano (p) dynamic. The notation is mostly blank.

22 (Action) ALEXEI SEES ANNA IN GARDEN FROM WINDOW At Dawning (Cadman) 1 Min

Mod. to
 Musical notation for 'Alexei Sees Anna in Garden from Window' in G major, 2/4 time, starting with a piano (p) dynamic.
Copy. 1909, by Oliver Ditson Comp.

NOTE: Play "PP" con sordini.

23 (Action) CATHERINE RETURNS TO ROOM Intermezzo (Granados) 2½ Min

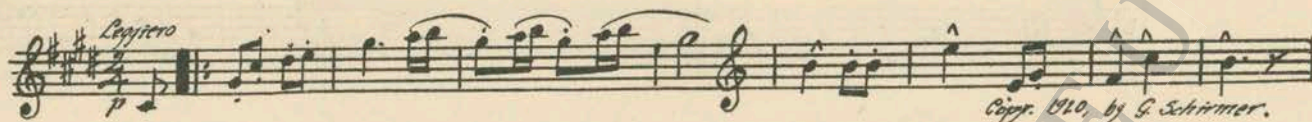
Lento espress.
 Musical notation for 'Catherine Returns to Room' in G major, 2/4 time, starting with a piano (p) dynamic.
Copy. by Schirmer.

NOTE: Play very slowly.

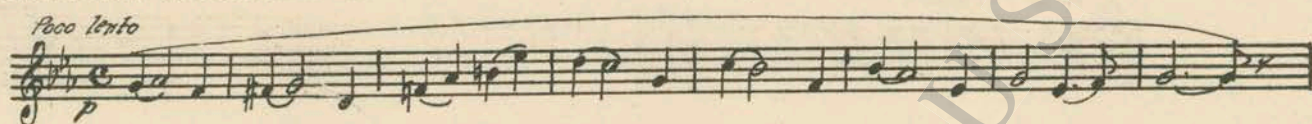
24 (Action) GARDEN SCENE Broken Hearts (Somerville) ¾ Min.

And: no appassionato
 Musical notation for 'Garden Scene' in G major, 2/4 time, starting with a piano (p) dynamic.
Copy. 1914, by Hawkes & Son.

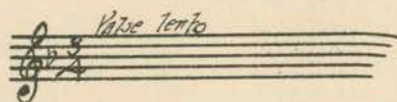
25 (Title) THE NEXT MORNING Marche Mignonne (Poldini) 2¾ Min.



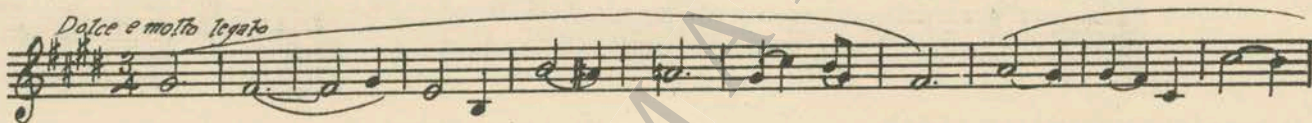
26 (Action) ANNA FAINTS Poeme D'Espoir (Gabriel-Marie) 3½ Min.



27 (Title) PLEASE, PLEASE BE MERCIFUL Repeat Catherine Theme No. 15 1 Min.



28 (Action) ANNA RECEIVES MESSAGE IN ROOM Histoire Romanesque (Gabriel-Marie) 2¼ Min.



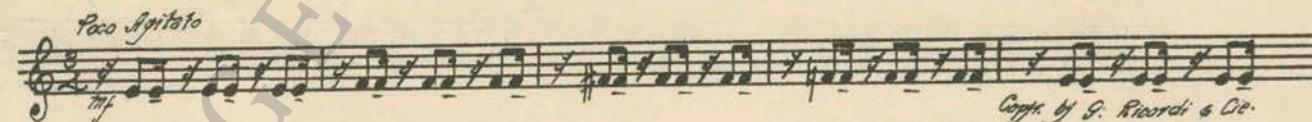
29 (Title) SOME DAYS LATER Red Feather (DeKoven) 3½ Min.



30 (Action) ALEXEI RETURNS TO BANQUET "Fling Out the Banner," from Red Feather (DeKoven) 1½ Min.

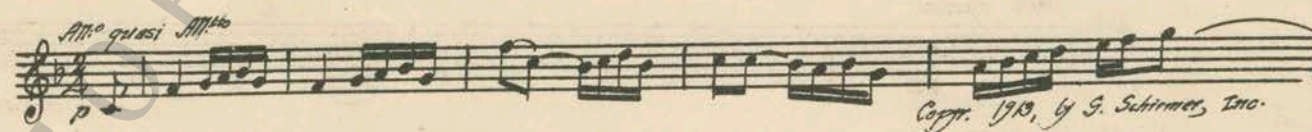


31 (Title) EVERYONE WHO KNOWS OUR QUEEN Anelante (Gabriel-Marie) ¾ Min.

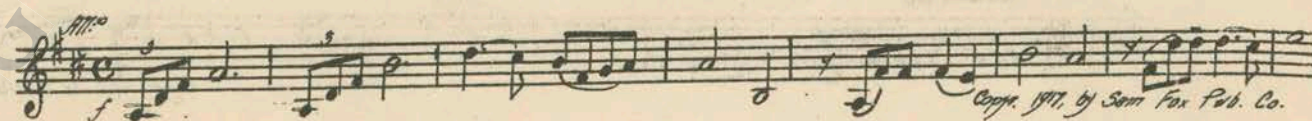


NOTE: Catch crash of breaking window.

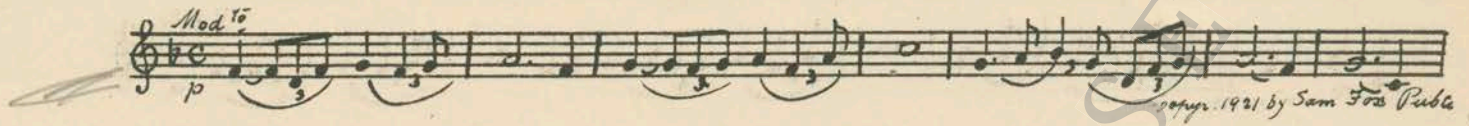
32 (Action) PRIME MINISTER IN BOUDOIR Prelude (Jarnfelt) ¾ Min.



33 (Action) ALEXEI ENTERS CATHERINE'S BOUDOIR... Ecstasy (Zamecnik) 3 Min.



34 (Action) ALEXEI READS—INSERT Enchanted Forest (Spitalny) 2¼ Min.



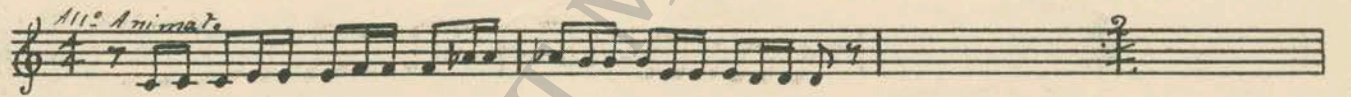
35 (Action) EXTERIOR—NIGHT SCENE Wotan (Fietter) 1½ Min.



36 (Action) PRIME MINISTER ENTERS MEETING ROOM. Repeat No. 32 "Prelude" 1½ Min.



37 (Action) ALEXEI ON ROAD Phaeton (St. Saens) 2 Min.



38 (Action) ALEXEI KNOCKS ON CATHERINE'S DOOR . Obsession (Fosse) 1¼ Min.

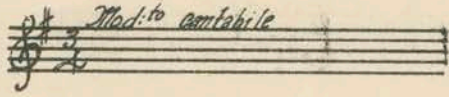


39. all your troops - fight Calvary
40. For the Queen - Jubilee war March

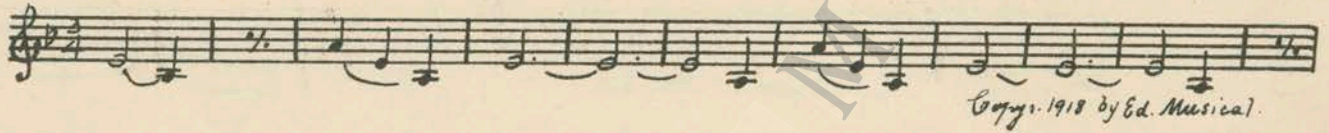
GEORGE EASTMAN MUSEUM

41 *Arise him -* *Reature No 1 and*
or
Britannus Scassolo

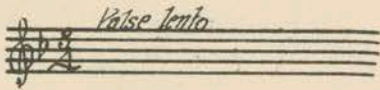
42 (Title) BROUGHT BEFORE THE MILITARY Repeat Love Theme No. 5.....1¼ Min.



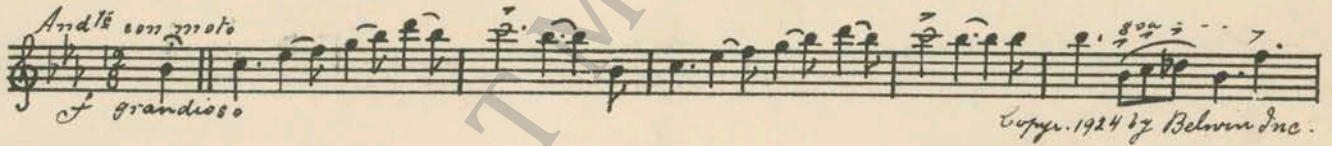
43 (Action) INSERT—NOTE FROM CATHERINE L'Angoissante aventure (Gabriel-Marie).....1¾ Min.



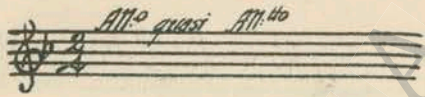
44 (Action) CATHERINE JOINS ALEXEI Repeat Catherine Theme No. 15.....2¾ Min.



45 (Title) YOUR MAJESTY IS NOT ONLY Appassionato Patetico (Bradford).....1¼ Min.



46 (Action) ALEXEI LEAVES CATHERINE Repeat No. 32 "Prelude".....2½ Min.



And
sinister

1995:1808:0001

NOTE: This number may be changed

GEORGE EASTMAN MUSEUM