

Thursday Nov. 17/27



M. J. MINTZ (PATENT)
JULY 31, 1923.

Two Themes

MUSEUM

William C. de Mille
presents

JETTA GOUDAL

in "THE FORBIDDEN WOMAN" VICTOR VARCONI and JOSEPH SCHILDKRAUT

Adaptation and Continuity by Clara Beranger

From an Original Story by Elmer Harris

Directed by Paul L. Stein

Produced by De Mille Pictures Corporation

Compiled by Rudolph Berliner

PATHE EXCHANGE, INC.

Distributor

1 AT SCREENING Fate (Ketelbey) 1 Min.

Maestoso
Incid. Symphony 15

2 (Action) INSERT—HAND AND TOY SOLDIERS Procession of the Sardar (Iwanow) 3/4 Min.

Tempo di Marcia
March Mignonne

3 (Action) ZITA ENTERS ROOM ZITA THEME: Eastern Romance (Korsakoff) 3/4 Min.

①

Mod^{to}

4 (Action) DISSOLVE—OFFICER ON HORSE Angosciosamente (Gabriel Marie) 2 Min.

All^o Vivo.

5 (Action) PIERRE HOLDS ZITA IN HIS ARMS Melodie (Tschaikowsky) 3/4 Min.

Mod^{to} con moto
Yesterday Love

6 (Action) INSERT—HANDS AND RINGS Repeat Zita Theme No. 3 1/2 Min.

①

Mod^{to}

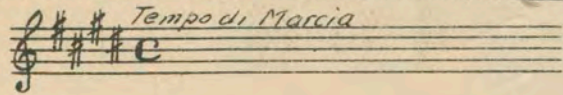
7 (Action) PIERRE JOINS ZITA Repeat No. 5 "Melodie" 2 Min.

Mod^{to} con moto.
a love song

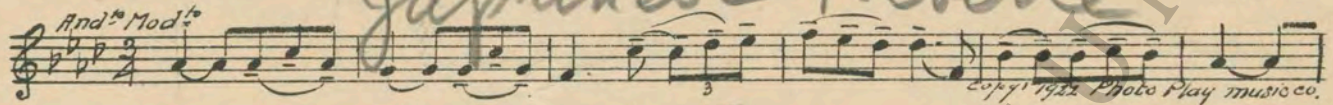
8 (Action) PIERRE LEAVES ROOM Orientale (Cui) 1 Min.

Mod^{to}

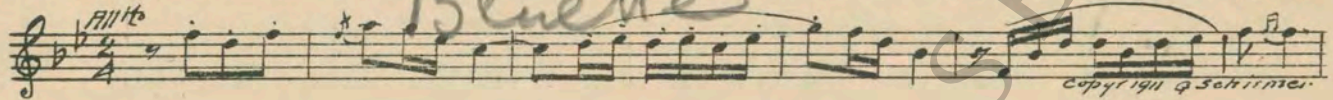
9 (Action) INSERT—HANDS AND PIGEON Repeat No. 1 "Procession of the Sardar" ½ Min.



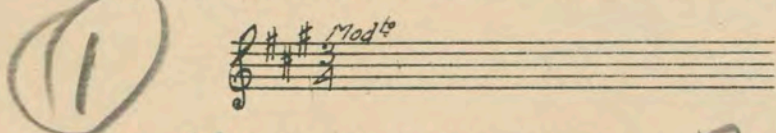
10 (Action) OCEAN LINER SEEN By the Japanese Sea (Haucenschild) (4th Strain) ½ Min.



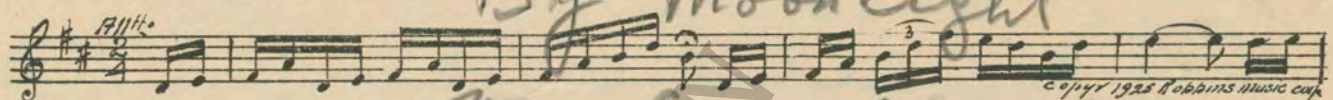
11 (Action) TWO MEN SEEN IN CABIN Canzonetta (Godard) ¾ Min.



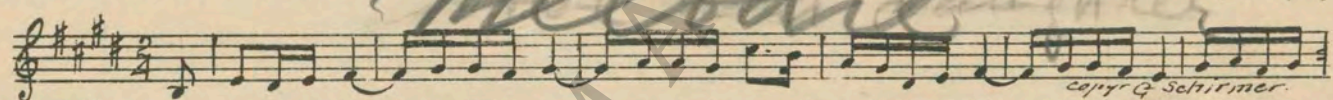
12 (Action) JEAN SEES ZITA Repeat Zita Theme No. 3 1¼ Min.



13 (Action) NEIL BLOWS IN JEAN'S FACE By Moonlight 3½ Min.

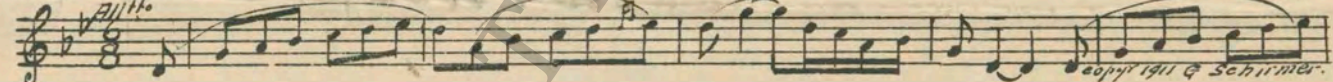


14 (Action) JEAN STARTS TO PLAY VIOLIN LOVE THEME: Etude (Chopin) 3¼ Min.

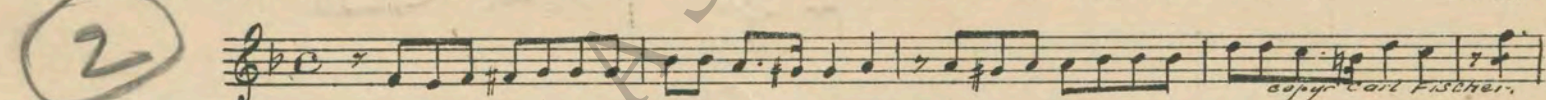


NOTE: Direct Cue for Violin Solo. When Jean stops playing, continue number giving melody to Cello instead of Violin.

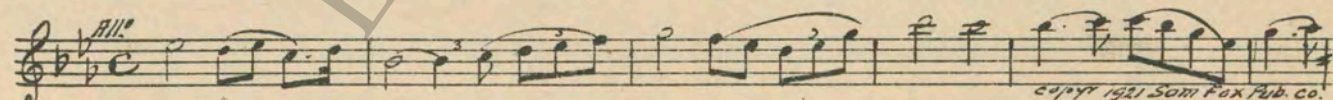
15 (Title) THE GAUTIER HOME Serenade (Rubenstein) 1¾ Min.



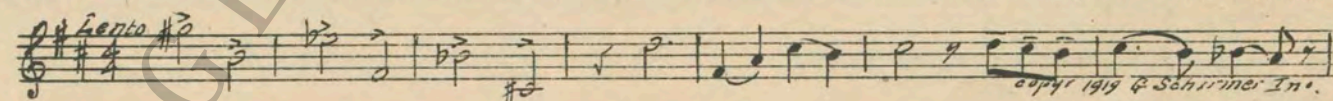
16 (Action) PIERRE SEES JEAN BROTHER THEME: Romance (Rubenstein) 3¼ Min.



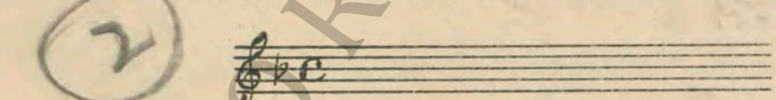
17 (Action) PIERRE OPENS DOOR TO WIFE'S ROOM.... Joy (Zamecnik) ¾ Min.



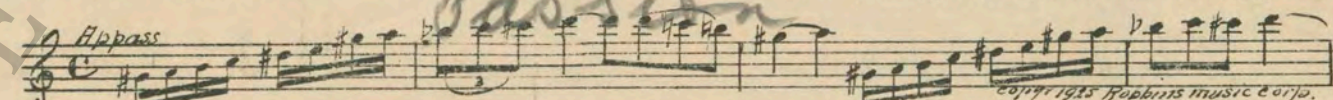
18 (Title) THIS IS MY WIFE In the Silence of Night (Rachmaninoff) 1¼ Min.



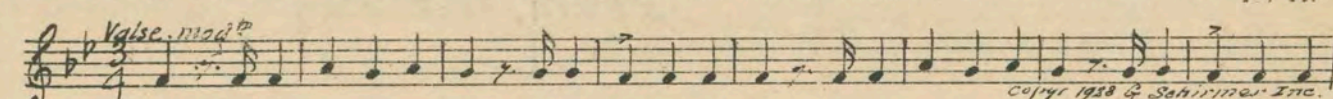
19 (Action) INSERT—HANDS AND WATCH Repeat Brother Theme No. 16 ½ Min.



20 (Action) ZITA ENTERS JEAN'S ROOM Appassionato in A minor (Savino) 2¼ Min.



21 (Action) PIERRE SEEN OUTSIDE HOUSE Misterioso alla Valse (Savino) ¼ Min.



22 (Action) ZITA AND JEAN SEEN AGAINAppassionato ~~Drammatico~~ (Berge)1½ Min.

Con moto appuse

copyr 1925 Robbins Music Corp.

23 (Action) PIERRE OPENS DOORDramatic Finale (Noyes)2 Min.

acitato con moto

copyr 1925 Harwood & Son

24 (Action) INSERT—WATCHRepeat Brother Theme No. 162½ Min.

2

copyr 1925 Harwood & Son

25 (Title) IN THE BURNING HEATNubian Desert Song (Amani)3½ Min.

And^{te}

copyr 1923 G. Schirmer, Inc.

26 (Action) ZITA SEEN IN ROOMRepeat Zita Theme No. 32 Min.

1
Mod^{to}

copyr 1925 Harwood & Son

27 (Action) AFTER JEAN LEAVES ZITASakuntala (Goldmark)1¼ Min.

Mod^{to} assai

copyr 1912 Carl Fischer

28 (Action) MAN AND LITTLE GIRL SEENArabian Song (Vogrich)2½ Min.

Mod^{to} assai

copyr 1922 G. Schirmer, Inc.

29 (Action) JEAN WITH VIOLIN SEENReverie (Conterno)½ Min.

Mod^{to}

copyr 1926 Lipskin

30 (Action) JEAN STARTS PLAYING SECOND TIMERepeat Love Theme No. 141½ Min.

copyr 1925 Harwood & Son

31 (Action) JEAN SEES ZITARepeat Zita Theme No. 31¼ Min.

1
Mod^{to}

copyr 1925 Harwood & Son

32 (Action) AFTER JEAN RUNS AWAYRepeat No. 8 "Orientale"1 Min.

Mod^{to}

copyr 1925 Harwood & Son

33 (Action) PIERRE SEATED AT DESKDramatic Tension (Ancliffe)2 Min.

Mod^{to}

copyr 1916 Bosworth & Co.

34 (Action) INSERT—PIGEON IN HANDSIn the Shadow of the Sphinx from "On the Nile" (Hilse)...1½ Min.

And^{te} Sost
melodie

copyr 1925 Carl Fischer

35 (Action) HORSEMAN APPEARS *Oriental Furioso* Phaeon (St. Saens) 2 Min.

Musical notation for item 35, featuring a treble clef, 2/4 time signature, and a key signature of one flat. The tempo marking is *All^o*. Copyright 1910 Durand & Co.

36 (Action) OFFICER SEATED IN ROOM A Mysterious Event (Zamecnik) 1 1/4 Min.

Musical notation for item 36, featuring a treble clef, 4/4 time signature, and a key signature of one flat. The tempo marking is *All^o Mod^o*. Copyright 1925 Sam Fox Pub Co.

37 (Action) ZITA SEATED AT DESK Repeat No. 8 "Orientale" 1/2 Min.

Musical notation for item 37, featuring a treble clef, 8/8 time signature, and a key signature of one flat. The tempo marking is *Mod^o*. *L'Esprit de Nibelheim*

38 (Action) PIERRE AND OFFICERS SEEN Mystere Oppressant (Gabriel Marie) 1 1/2 Min.

Musical notation for item 38, featuring a treble clef, 8/8 time signature, and a key signature of three sharps. The tempo marking is *And^{te} Molto Tranquillo*. Copyright 1924 Chapelier.

39 (Action) AFTER FADE-OUT—OFFICER WITH PORTFOLIO SEEN Lamento (Gabriel Marie) 2 1/2 Min.

Musical notation for item 39, featuring a treble clef, 4/4 time signature, and a key signature of one sharp. The tempo marking is *Dolent^e*. Copyright 1916 Carl Fischer.

40 (Action) JEAN IN PRISON Prelude (Op. 28, No. 4) (Chopin) 1 Min.

Musical notation for item 40, featuring a treble clef, 4/4 time signature, and a key signature of one sharp. The tempo marking is *Fargo*. Copyright 1916 G. Schirmer Inc.

41 (Title) BECAUSE I AM ABOUT Repeat Love Theme No. 14 3 1/2 Min.

Musical notation for item 41, featuring a treble clef, 4/4 time signature, and a key signature of three sharps. *Pensee d'amour - Lamento*

42 (Action) INSERT—SOLDIERS' FEET MARCHING Orchestra Tacet—Drum Solo to action 1/4 Min.

Musical notation for item 42, featuring a treble clef and a key signature of one flat. *Drum Solos*

43 (Action) PIERRE AT DESK Andante Pathetique (Berch) 3 Min.

Musical notation for item 43, featuring a treble clef, 4/4 time signature, and a key signature of one flat. The tempo marking is *And^{te} mod^{te}*. Copyright 1919 Belwin Inc.

44 (Action) ZITA AGAINST WALL Facing Death (Bece) 1 Min.

Musical notation for item 44, featuring a treble clef, 4/4 time signature, and a key signature of one sharp. The tempo marking is *And^{te} Largo*. Copyright 1926 Schlesinger.

45 (Action) PIERRE SEATED WITH HEAD IN ARMS Praeludium (Chopin) 1/2 Min.

Musical notation for item 45, featuring a treble clef, 4/4 time signature, and a key signature of one flat. The tempo marking is *Largo*. *Oriental Dram. Adagio*

46 (Action) JEAN PLACES HAND ON PIERRE'S SHOULDER Repeat Brother Theme No. 16

Musical notation for item 46, featuring a treble clef, 4/4 time signature, and a key signature of one flat. A circled number '2' is written in the left margin.

THE END

Printed in U. S. A.

Complete orchestrations and single piano parts of each separate number contained hereon, can be purchased from CAMEO MUSIC SERVICE CORPORATION, 315-317 WEST 47TH STREET, NEW YORK CITY.

Change #41 to dramatic

95:1803:1