

THEMATIC MUSIC CUE SHEET
(Patent Appl. d For)

Jesse L. Lasky

Presents

JACK HOLT

IN

"A GENTLEMAN OF LEISURE"

Screen adaptation by Jack Cunningham and Anthony Coldway
From the play by John Stapleton and P. G. Wodehouse
Footage 5,095 feet

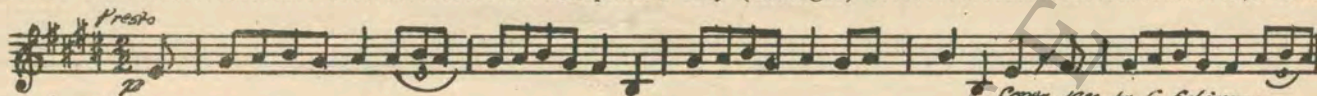
A Paramount Picture



Directed by Joseph Henabery

Music compiled by James C. Bradford

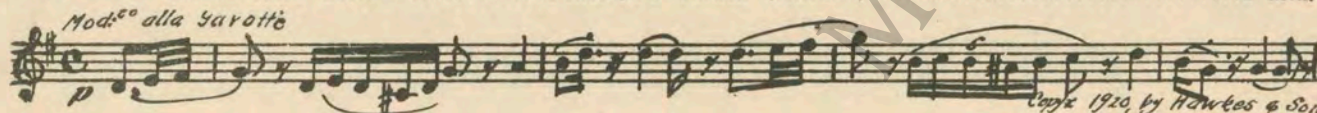
1 AT SCREENING Shepherd's Hey (Grainger) 2½ Min.



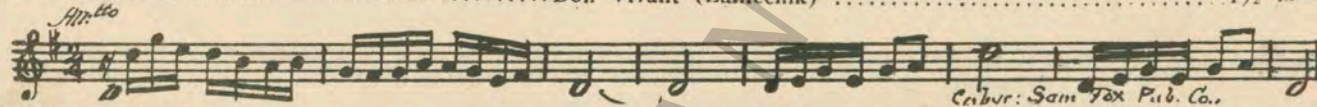
2 (Title) LADY JULIA IS A GOOD GUESSER American Dance (Kretschmer) 2¾ Min.



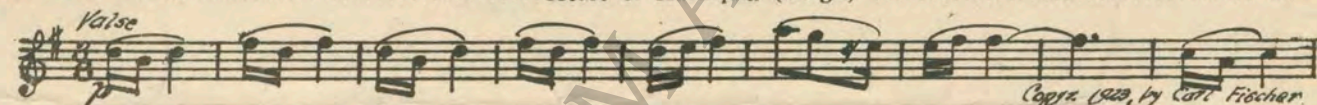
3 (Action) MOLLY WITH LORD AND LADY Penelope's Garden (Ancliffe) 2 Min.



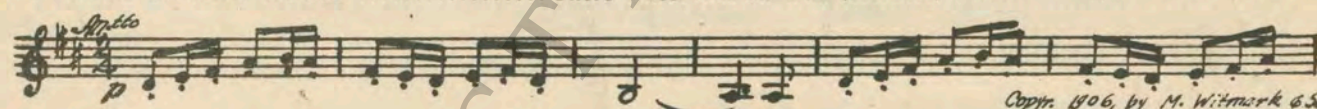
4 (Title) A SKY LINE Bon Vivant (Zamecnik) 1½ Min.



5 (Title) A WEEK LATER Heart of Harlequin (Drigo) 2¼ Min.



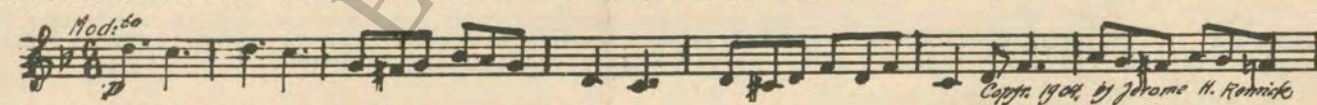
6 (Title) HE ENTERS DINING ROOM There Once Was an Owl (Herbert) 4 Min.



7 (Title) THAT EVENING The Spider and the Fly (Armand) ¾ Min.



8 (Action) MEN FRIENDS LEAVE ROOM Dreaming (Dailey) 1 Min.



9 (Action) AUTO STOPS AT DOOR Mignonette (Savino) 2 Min.



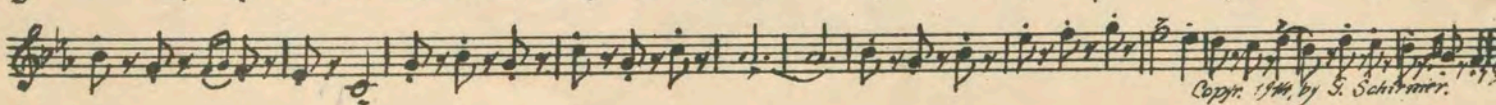
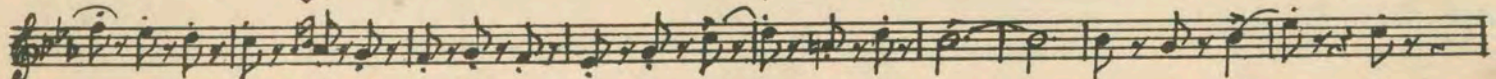
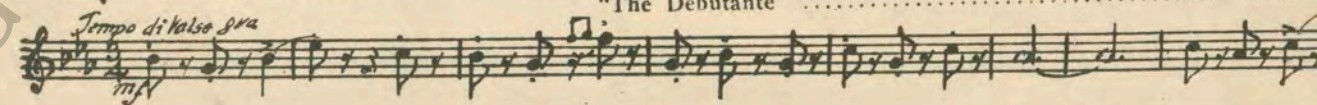
10 (Action) PITT PUTS OUT LIGHTS Carnival Grotesque (Savino) 3¾ Min.



11 (Title) BETWEEN THE PASSING March Burlesque (Gillet) 3¾ Min.



12 (Action) PITT HANDS CARD TO MOLLY THEME: Baker's Boy and Climray Sweep from "The Debutante" 1 Min.



Copyright 1936, by S. Schirmer

13 (Action) FATHER ENTERS L'amour du Papillon (Henneberg) 2 Min.

Musical notation for 'FATHER ENTERS' in 2/4 time, marked *All^o* and *p*. Copyright 1922 by Carl Fischer.

14 (Title) HIS WHOLE CONCERN The Busy Bee (Bendix) 2¼ Min.

Musical notation for 'HIS WHOLE CONCERN' in 2/4 time, marked *All^o vivace*. Copyright 1899 by Carl Fischer.

15 (Title) THE PARTY AT BAY SHORE Gavotte and Musette (Raff) 2 Min.

Musical notation for 'THE PARTY AT BAY SHORE' in 2/4 time, marked *All^o*. Copyright 1912 by G. Schirmer.

16 (Action) PITT DRIVES UP IN AUTO Repeat Theme No. 12 2¾ Min.

17 (Title) WHILE IN THE CITY Harlequin's Serenade (Schuett-Jacobs) 1¼ Min.

Musical notation for 'WHILE IN THE CITY' in 2/4 time, marked *Allegretto grazioso*. Copyright 1918 by Walter Jacobs.

18 (Action) FLASH-BACK LORD AND LADY Repeat Theme No. 12 2 Min.

19 (Action) INTERIOR—MAID AND MAN SERVANT Pulcinello (Aletter) 2 Min.

Musical notation for 'INTERIOR—MAID AND MAN SERVANT' in 2/4 time, marked *Allegretto*. Copyright 1912 by G. Schirmer.

20 (Title) I SAY WILL YOU MARRY ME Forest Fancies (Haines) 1½ Min.

Musical notation for 'I SAY WILL YOU MARRY ME' in 2/4 time, marked *All^o grazioso*. Copyright 1921 by Hawkes & Sons.

21 (Action) PITT LOOKING IN WINDOW Repeat Theme No. 12 1½ Min.

22 (Action) COMMISSIONER CALLS MR. CLARK ON PHONE Hedge Roses (Frey) 1½ Min.

Musical notation for 'COMMISSIONER CALLS MR. CLARK ON PHONE' in 2/4 time, marked *And^{te} con moto*. Copyright 1923 by Richmond Robbins.

23 (Title) WHY DON'T YOU CUT OUT First Courtship (Lindgreen) 1¼ Min.

Musical notation for 'WHY DON'T YOU CUT OUT' in 2/4 time, marked *p* and *vz*. Copyright 1922 by Belwin.

24 (Title) BUT NOW I MUST GO Aurora (Von der Mehden) 4 Min.

Musical notation for 'BUT NOW I MUST GO' in 2/4 time, marked *All^o con moto* and *mf*. Copyright 1910 by C. Fischer.

25 (Title) YOUR FATHER IS HERE Intermezzo (Arensky) 3½ Min.

Musical notation for 'YOUR FATHER IS HERE' in 2/4 time, marked *presto* and *p*. Copyright 1915 by G. Schirmer.

26 (Title) YOU'RE AN EXPERT Intermezzo (Martin) 1¼ Min.

Musical notation for 'YOU'RE AN EXPERT' in 2/4 time, marked *All^o*. Copyright 1915 by G. Schirmer.

27 (Title) I'VE WON THE BET Repeat Theme No. 12 1 Min.

THE END

Country of Origin U. S. A.

Complete Orchestrations and single parts of all compositions contained herein can be purchased from
 CAMEO MUSIC PUBLISHING CO., INC., 112-118 West 44th Street, New York City

95:1825:1