

Opening Thursday Feb 24/27

Thematic Music Cue Sheet

M. J. MINTZ (PATENT) JULY 31, 1923.



ADOLPH ZUKOR and JESSE L. LASKY

present

A HERBERT BRENON PRODUCTION

"GOD GAVE ME TWENTY CENTS"

with

Lois Moran, Lya de Putti, Jack Mulhall and William Collier, Jr.

Story by Dixie Willson

Adaptation by John Russell

Screen play by Elizabeth Meehan

Music compiled by James C. Bradford

Footage 6321 feet

A Paramount Picture

1 AT SCREENING La Moulin Hante (Snoek) 1/2 Min.

Handwritten: *And^{te} maestoso*
Musical notation for La Moulin Hante (Snoek). Copyright J. Yves.

2 (Title) MARDI GRAS Rustic Bacchanale de Montmartre (Ketelbey) 1 1/4 Min.

Handwritten: *Allo vivo*
Musical notation for Rustic Bacchanale de Montmartre (Ketelbey). Copyright 1925 Bosworth & Co.

3 (Title) SAILORS ASHORE Plymouth Hoe (Ansell) 2 1/2 Min.

Handwritten: *Allo con brio*
Musical notation for Plymouth Hoe (Ansell). Copyright 1914 Chappell & Co.

4 (Title) JACK TAR ASHORE AND HIS GIRL IN JAIL Cupid's Conquest (Kahn) 2 1/4 Min.

Handwritten: *Allo*
Musical notation for Cupid's Conquest (Kahn). Copyright 1922 Belwin Inc.

5 (Title) BUT WHEN NIGHT CAME Gaiety (Savino) 2 3/4 Min.

Handwritten: *Allo con spirito*
Musical notation for Gaiety (Savino). Copyright 1924 Robbins Engel.

6 (Action) THEY STOP AT FOUNTAIN Nobby Gobs (Frey) 1 Min.

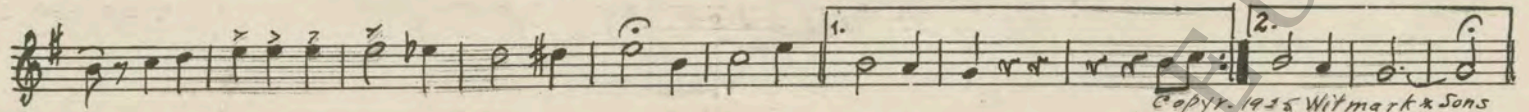
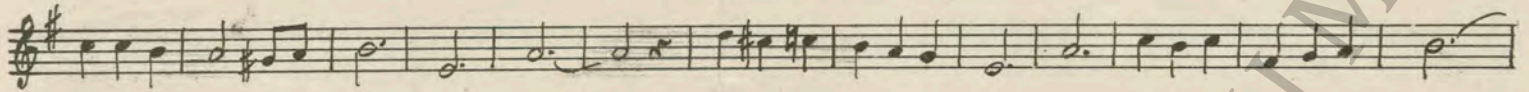
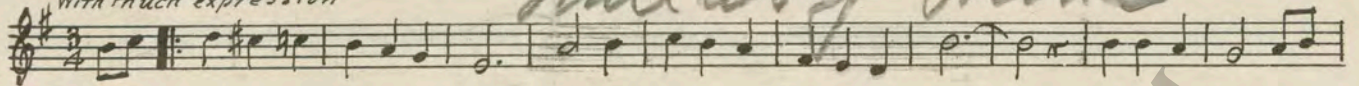
Handwritten: *Morzato*
Musical notation for Nobby Gobs (Frey). Copyright 1925 Robbins Engel.

7 (Title) I'VE NEVER MET A GIRL LIKE YOU You'll Dream and I'll Dream (Friml) 1 Min.

Handwritten: *Slow*
Musical notation for You'll Dream and I'll Dream (Friml). Copyright 1920 G. Schirmer.

8 (Action) **THEY STOP AT ENTRANCE TO MARY'S HOME** **THEME: That's Why You're Mary Mine (King)** 2 Min.

With much expression

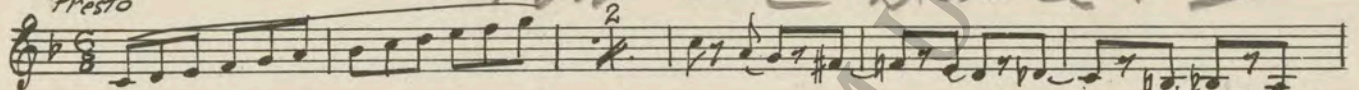


Copyr. 1925 Witmark & Sons

9 (Title) **STEVE CAME BACK** **Gigue from "Suite Ancienne" (Hadley)** 2 Min.

NOTE: Play "PP" con sordini strings only.

Presto



Copyr. 1926 Carl Fischer

10 (Action) **THEY ENTER ROOM** **The Love Nest (Hirsch)** 3/4 Min.

NOTE: Rattling of tin pans, horns ad lib, etc.

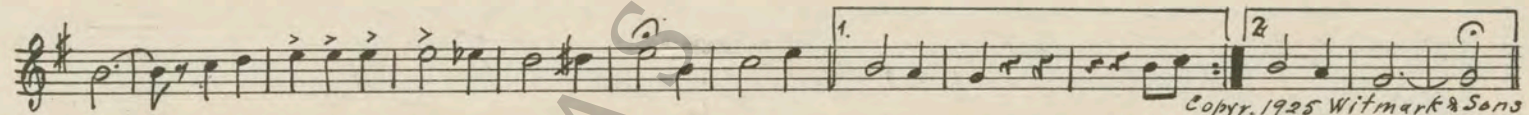
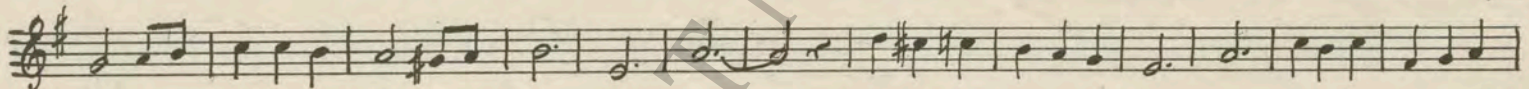
Mod^{to}



Copyr. 1920 J. P. Harms

11 (Action) **STEVE TAKES BITE OF CAKE** **THEME: That's Why You're Mary Mine (King)** 2 Min.

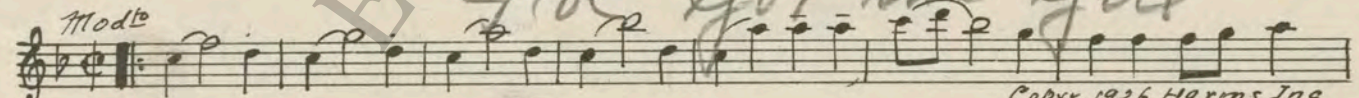
With much expression



Copyr. 1925 Witmark & Sons

12 (Title) **AND THEN TWO WEEKS SO FULL** **The Blue Room (Rodgers)** 2 Min.

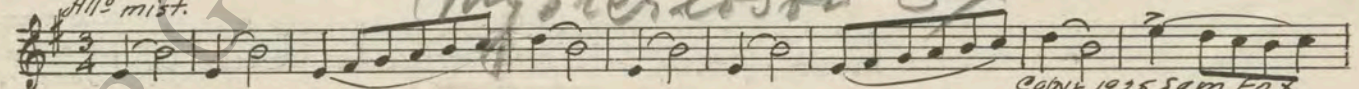
Mod^{to}



Copyr. 1926 Harms Inc

13 (Title) **CASSIE'S BURNING UP** **Mysterious Event (Zamecnik)** 1/2 Min.

All^o mist.



Copyr. 1925 Sam Fox

14 (Action) **CASSIE IN CELL** **Deft Love (Schad)** 2 1/4 Min.

NOTE: Cuckoo clock ad lib, and solo after Steve leaves.

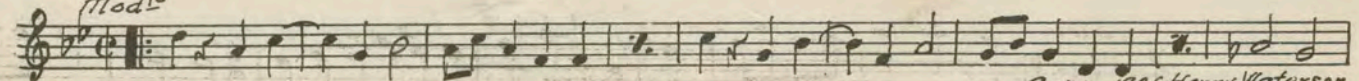
All^o appassionato



Copyr. 1925 Sanders Co

15 (Action) **STEVE MEETS BARNEY ON STREET** **Animal Crackers (Rich)** 2 Min.

Mod^{to}



Copyr. 1926 Henry Waterson

NOTE: Start very "P" and play stronger for interiors; "PP" for Cassie's entrance.

16 (Title) MA'S ALWAYS GOT A ROOM FOR YOU
DEAR Heart's Desire (Varley) 1/2 Min.

Andte con moto

Copyright 1922 Belwin Inc

17 (Action) STEVE AND BARNEY ENTER Carolina Stomp (Bloom) 2 Min.

Modto
Running Wild

Copyright 1925 Triangle M.P.Co

NOTE: Play very hot and wild; drummer catch whirl.
18 (Action) CASSIE JOINED BARNEY Sweet and Low-Down (Gershwin) 1 1/2 Min.

Modto
Take Yo' Fingers

Copyright 1925 Harms Inc

NOTE: Play "PP" throughout entire sequence.
19 (Action) STEVE AND CASSIE ALONE Just A Girl That Men Forget (Garren) 1 Min.

Valse modto

Copyright 1918 Jack Mills

20 (Title) YOU'LL GAMBLE ON ANYTHING Dram. Reproach (Berge) 2 3/4 Min.

Andte

Copyright 1919 Belwin Inc

NOTE: Play with lots of motion and action; "PP" when coins are tossed until fade-out.
21 (Action) MARY PACKING STEVE'S CLOTHES In A Little World For Two from "Princess Pat" (Herbert) 1/2 Min.

Allte animato

Cop. Witmark & Sons

22 (Action) WHARF SCENE Elegie and Appassionato (Savino) 1 3/4 Min.

Assai lento
Dram Teno - 36

Copyright 1926 Robbins & Engel

23 (Title) STEVE'S GONE Infamy (Contempo) 2 1/2 Min.

Slowly with anger
Dram. Recital

Copyright 1926 G.W. Lipskin

24 (Action) MARY PROSTRATED ON BED Silent Night (Rebikov) 1 3/4 Min.

Largo
Dram Suspense

Copyright 1917 G. Schirmer

25 (Action) SALVATION ARMY FLASH Have You A Frfend Like That? (Hymn) 1/2 Min.

Religioso
Rejoice

Copyright 1924 S. Chapelier

NOTE: Refrain only very "P".
26 (Action) MARY WALKS DOWN DESERTED STREET.. Mystere Oppressant (Gabriel Marie) 1 3/4 Min.

Andte
Misterioso Dram

Copyright 1924 S. Chapelier

NOTE: Play slowly and very "P".

27 (Action) SHE SEES TWO DIMES IN DIRT Turmoil (Brunelli) 3 Min.

Musical notation for item 27, marked *Mod^{to}*. Includes handwritten annotation "Agitato #1" above the staff. Copyright 1926 Sanders Co.

28 (Action) HOSPITAL WARD NOTE: Start Moderato "P" and gradually work up for fall down stairs, pistol shots and falls. Berceuse (Jarnefelt) 3 1/2 Min.

Musical notation for item 28, marked *And^{te}*. Copyright 1910 Carl Fischer.

29 (Title) MAYBE YOU HEARD OF HER NOTE: Play in 4/8 tempo slowly, "PP" strings only. Erotic (Grieg) 1 1/2 Min.

Musical notation for item 29, marked *Lento*. Copyright 1918 Carl Fischer.

30 (Action) CASSIE TAKES HOLD OF MARY'S HAND NOTE: Play "PP" strings only. Lamento from Pique Dame (Tschaikowsky) 1 1/2 Min.

Musical notation for item 30, marked *And^{te}*. Includes handwritten annotation "Reverie" above the staff. Copyright 1926 Manus Music Co.

31 (Action) FADE-IN NARRATIVE Uneasiness (Mendelssohn) 1 1/4 Min.

Musical notation for item 31, marked *And^{te} con moto*. Includes handwritten annotation "Sinful" above the staff. Copyright 1926 Cinemusic Serv.

32 (Action) FLASH-BACK TO CASSIE ON BED NOTE: Start at a moderate tempo and gradually work up for struggle and fade-out. Repeat No. 30 "Lamento from Pique Dame" 1 Min.

33 (Title) SO MARY WAITED The World is Waiting For the Sunrise (Seitz) 1 3/4 Min.

Musical notation for item 33, marked *Mod^{to}*. Copyright 1922 Chappell.

34 (Action) STEVE APPEARS IN DOORWAY NOTE: Play as a song. Just A Wearvin' For You (Bond) 1 3/4 Min.

Musical notation for item 34, marked *And^{te}*. Copyright 1908 Arnett-DeLona's Co.

35 (Action) MARY SEES FLORIST IN HALLWAY Around the Sundial (Castillo) 1 3/4 Min.

Musical notation for item 35, marked *All^{to} mod^{to}*. Copyright 1923 Walter Jacobs.

36 (Action) MARY PLACES ROSE IN HER HAIR THEME: That's Why You're Mary Mine (King) 3/4 Min.

Musical notation for item 36, marked *With much expression*. Includes handwritten annotation "Wonderful Wonder" above the staff.

Final musical notation for the score, including a double bar line and a second ending. Copyright 1925 Witmark & Sons.

THE END

Country of Origin, U. S. A.

Orchestrations or single piano parts of each separate musical selection suggested hereon, can be purchased from CAMEO MUSIC SERVICE CORPORATION, 315-317 WEST 47TH STREET, NEW YORK CITY.

95:1838:1