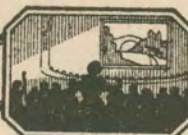


Sat + Sun
July 31 - 8/1

Thematic Music  Cue Sheet

M. J. MINTZ (PATENT)
JULY 31, 1923.

ADOLPH ZUKOR and JESSE L. LASKY

present

POLA NEGRI

in

A Malcolm St. Clair Production

"GOOD AND NAUGHTY"

with

Tom Moore and Ford Sterling

From the play "Naughty Cinderella" by Avery Hopwood

Adapted from the French of Rene Peter and Henri Falk

Screen play by Pierre Collings

Music compiled by James C. Bradford

Footage 5403 feet



A Paramount Picture

- 1 AT SCREENINGSittin' Around (Sanders)2¼ Min.

Mod^{to}

Copyright 1926 Leo Feist Inc.

- 2 (Title) YOU RUNTIDINESS AROUND THIS OFFICE. Chatter (Kahn)1½ Min.

Rubato

Copyright 1926 Sonnemann M.

- 3 (Title) GEORGE FENTONPoor Papa (Woods)¾ Min.

Mod^{to}

Copyright 1926 Irving Berlin

- 4 (Action) BUNNY WESTToo Many Parties and Too Many Pals (Henderson)1¼ Min.

Valse

Copyright 1925 Leo Feist Inc

- 5 (Action) CLAIRE/ENTERS STUDIOWhat Good Is Good Morning? (Santly)3 Min.

Mod^{to}

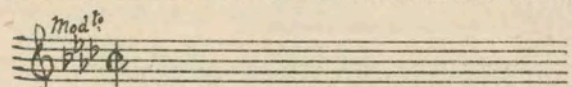
Copyright 1926 Leo Feist Inc.

- 6 (Action) FENTON ENTERSHumoresque (Tschaiakowsky)3½ Min.

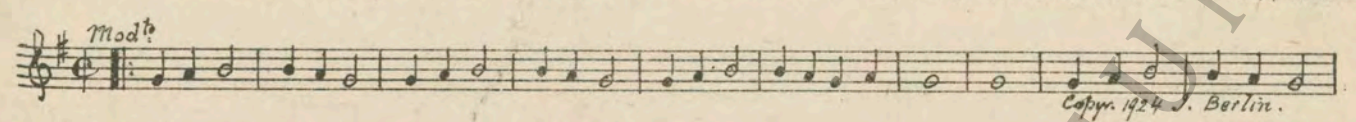
All^o

Copyright 1923 Carl Fischer

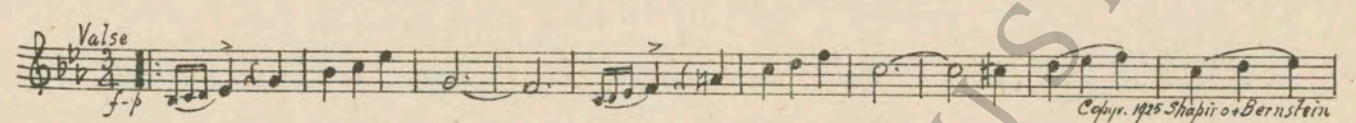
7 (Action) CLAIRE ENTERS AGAIN Repeat No. 3 "Poor Papa" 2 Min.



8 (Action) INSERT—NOTE BOOK—NAMES OF GIRLS... No One Knows What It's All About (Woods) 1 1/4 Min.



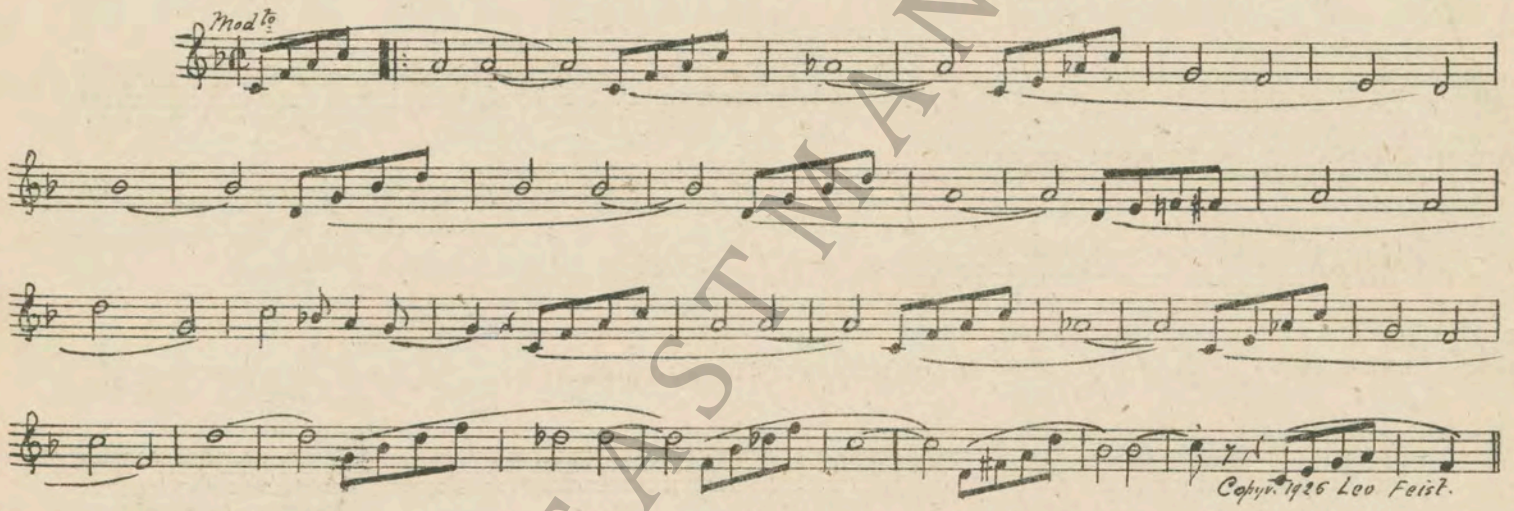
9 (Action) CHOUCYOU AND FRIEND ENTER Down by the Winegar Woiks (Lewis) 1/2 Min.



10 (Action) THEY LEAVE Woodland Whispers (Czibuka) 1/2 Min.



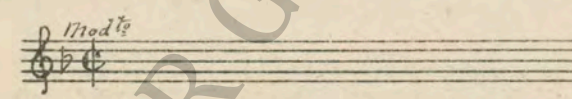
11 (Title) THAT NIGHT Pretty Little Baby (Bernie) 1 Min.



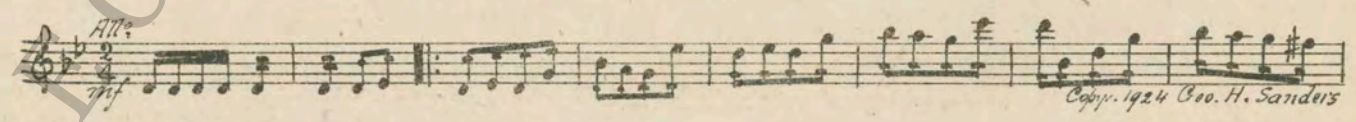
12 (Title) THE FENTON YACHT By the Stream (Rapee-Axt) 1 Min.



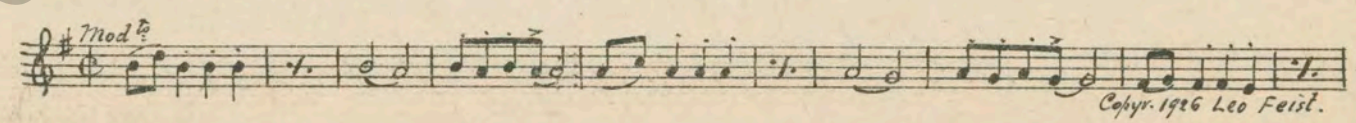
13 (Title) IF THAT'S THE GIRL Repeat No. 11 "Pretty Little Baby" 1 1/4 Min.



14 (Action) THE REAL CHOUCYOU APPEARS AT WHARF Moto Perpetuo (Weiss) 1 1/4 Min.



15 (Action) GERMAINE STANDING AT RAIL After I Say I'm Sorry (Donaldson) 1 Min.



16 (Action) BUNNY FEELS SEA-SICK Mal de Mer (Lange) 1 Min.

Sea Sick
mf
 Musical notation for 'Sea Sick' in treble clef, 2/4 time, starting with a key signature of one flat. The melody is written on a single staff with a dynamic marking of *mf*.
Copyr. 1925 Arthur Lange

17 (Title) NOTE: Play very slow and draggy, sea-sick burlesque.
THE FENTON HOME IN FLORIDA Florida (Greer) 2 3/4 Min.

Mod^{to}
 Musical notation for 'THE FENTON HOME IN FLORIDA' in treble clef, 2/4 time, starting with a key signature of one flat. The melody is written on a single staff with a dynamic marking of *Mod^{to}*.
Copyr. 1925 Robbins-Brygel

18 (Title) I CAN'T UNDERSTAND WHY YOU Repeat No. 11 "Pretty Little Baby" 1 1/2 Min.

Mod^{to}
 Musical notation for 'I CAN'T UNDERSTAND WHY YOU' in treble clef, 2/4 time, starting with a key signature of one flat. The melody is written on a single staff with a dynamic marking of *Mod^{to}*.

19 (Action) ON WALK IN WHEEL CHAIRS Ah-Ha! (Monaco) 2 Min.

Fox-Trot
mf-fff
 Musical notation for 'ON WALK IN WHEEL CHAIRS' in treble clef, 2/4 time, starting with a key signature of one flat. The melody is written on a single staff with a dynamic marking of *mf-fff*.
Copyr. 1925 Shapiro-Bernstein

20 (Title) THE FOUNTAIN OF YOUTH Blue Law Blues (Lake) 2 Min.

Mod^{to}
 Musical notation for 'THE FOUNTAIN OF YOUTH' in treble clef, 2/4 time, starting with a key signature of one flat. The melody is written on a single staff with a dynamic marking of *Mod^{to}*.
Copyr. 1921 C. Fischer.

21 (Action) GERMAINE TAKES SEAT—LIGHTS
CIGARETTE Repeat No. 11 "Pretty Little Baby" 1 Min.

Mod^{to}
 Musical notation for 'GERMAINE TAKES SEAT—LIGHTS CIGARETTE' in treble clef, 2/4 time, starting with a key signature of one flat. The melody is written on a single staff with a dynamic marking of *Mod^{to}*.

22 (Title) EVERY MAN IN THIS HOUSE IS IN LOVE Don't Wake Me Up (Baer) 3/4 Min.

Mod^{to}
 Musical notation for 'EVERY MAN IN THIS HOUSE IS IN LOVE' in treble clef, 2/4 time, starting with a key signature of one flat. The melody is written on a single staff with a dynamic marking of *Mod^{to}*.
Copyr. 1925 Leo Feist.

23 (Title) BEDTIME When Lights Are Low (Koehler) 1 Min.

Valse
 Musical notation for 'BEDTIME' in treble clef, 3/4 time, starting with a key signature of one flat. The melody is written on a single staff with a dynamic marking of *Valse*.
Copyr. 1924 Leo Feist

24 (Action) GERALD SNEAKS OUT OF ROOM March Burlesque (Gillet) 3/4 Min.

Marcia
mf
 Musical notation for 'GERALD SNEAKS OUT OF ROOM' in treble clef, 2/4 time, starting with a key signature of one flat. The melody is written on a single staff with a dynamic marking of *mf*.
Copyr. 1910 Enoch Co.

25 (Action) GERALD AND CLAIRE IN GARDEN Cheatin' On Me (Pollack) 1 1/2 Min.

Mod^{to}
 Musical notation for 'GERALD AND CLAIRE IN GARDEN' in treble clef, 2/4 time, starting with a key signature of one flat. The melody is written on a single staff with a dynamic marking of *Mod^{to}*.
Copyr. 1925 Agar-Yellen-Bornstein

26 (Action) FLASH-BACK TO BUNNY IN HALLWAY She's Drivin' Me Wild (Fields) 1 1/2 Min.

Mod^{to}
 Musical notation for 'FLASH-BACK TO BUNNY IN HALLWAY' in treble clef, 2/4 time, starting with a key signature of one flat. The melody is written on a single staff with a dynamic marking of *Mod^{to}*.
Copyr. 1925 Broadway Musical.

NOTE: Play very "P" and slowly.

27 (Action) FENTON PEEKING Oh Boy, What a Girl (Green) ½ Min.

Musical notation for 'Oh Boy, What a Girl' in G major, 2/4 time, marked *Mod^{to}*. Copyright 1920 Shapiro-Bernstein.

28 (Action) FENTON CAUGHT PEEKING Passepied (Delibes) 2¾ Min.

Musical notation for 'Passepied' in D major, 3/4 time, marked *All^o*. Copyright 1912 G. Schirmer.

29 (Title) I WILL DIVORCE MY WIFE Repeat No. 3 "Poor Papa" 1½ Min.

Musical notation for 'I Will Divorce My Wife' in B-flat major, 2/4 time, marked *mod^{to}*.

30 (Action) FENTON LEAVES GERMAINE All Alone (Berlin) ½ Min.

Musical notation for 'All Alone' in B-flat major, 3/4 time, marked *Valse lento*. Copyright 1924 J. Berlin.

31 (Action) BUNNY SNEAKING OUT WITH BAGGAGE Haste (Sanders) 2¾ Min.

Musical notation for 'Haste' in G major, 2/4 time, marked *Presto vivo*. Copyright 1926 Geo. H. Sanders.

32 (Action) PUG PULLS GERALD BACK INTO ROOM Repeat No. 9 "Down by the Winegar Woiks" 1¾ Min.

Musical notation for 'Down by the Winegar Woiks' in B-flat major, 3/4 time, marked *Valse*.

33 (Action) CAB DRIVES AWAY NOTE: Timpany roll and crashes for noise in room where fight is on. No Foolin' (Hanley) 1¾ Min.

Musical notation for 'No Foolin' (Hanley)' in B-flat major, 2/4 time, marked *Mod^{to}* and *p. mf*. Copyright 1926 Harms.

34 (Action) GERMAINE ENTERS Repeat No. 27 "Oh Boy, What a Girl" 1 Min.

Musical notation for 'Oh Boy, What a Girl' in G major, 2/4 time, marked *Mod^{to}*.

35 (Action) MRS. FENTON AND ANOTHER MAN IN WHEEL CHAIR NOTE: Play very quietly, strings only. Any Way the Wind Blows (Hanley) ½ Min.

Musical notation for 'Any Way the Wind Blows' in G major, 2/4 time, marked *Jazz*. Copyright 1924 Shapiro-Bernstein.

36 (Action) FLASH-BACK TO GERMAINE AND GERALD. Repeat No. 11 "Pretty Little Baby" ½ Min.

Musical notation for 'Pretty Little Baby' in B-flat major, 2/4 time, marked *Mod^{to}*.

NOTE: Play one chorus and finish.

THE END

Country of Origin, U. S. A.

Complete orchestrations and single piano parts of each separate number contained hereon, can be purchased from CAMEO MUSIC SERVICE CORPORATION, 315-317 West 47th Street, New York City.

95:1845:1