

M. J. MINTZ (PATENT)  
JULY 31, 1923.



ADOLPH ZUKOR and JESSE L. LASKY

present

A HERBERT BRENON PRODUCTION  
"THE GREAT GATSBY"

with

Warner Baxter, Lois Wilson, Neil Hamilton and Georgia Hale

From the novel by F. Scott Fitzgerald and the play by Owen Davis

Screen play by Becky Gardiner

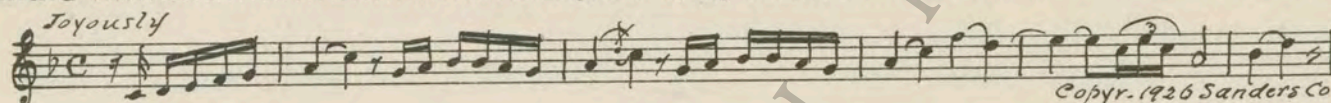
Adapted by Elizabeth Meehan

Music compiled by James C. Bradford

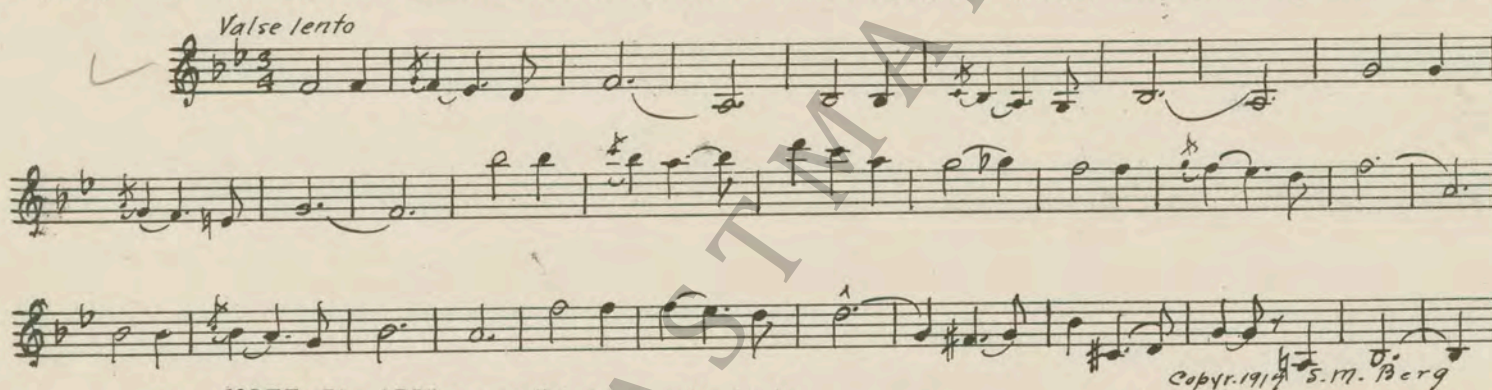
Footage 7296 feet

A Paramount Picture

- 1 AT SCREENING ..... Spirit of Spring (Reiser) ..... 1¼ Min.



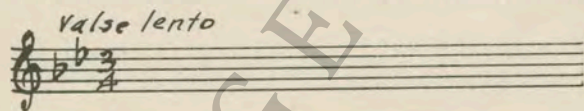
- 2 (Title) HE WAS NOBODY ..... THEME: Sleeping Rose (Borch) ..... 3 Min.



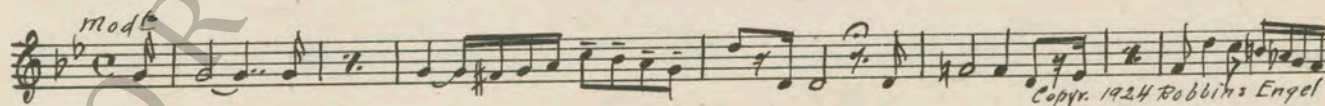
- 3 (Title) HE WENT TO FRANCE ..... Valse Staccato (Borissoff) ..... 2½ Min.



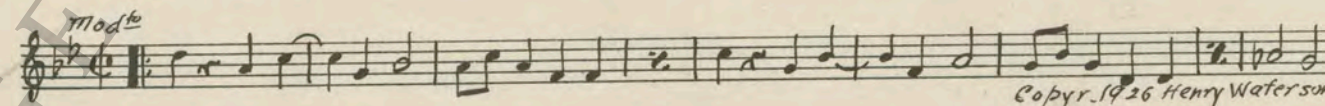
- 4 (Action) INSERT—LETTER ..... Repeat Theme No. 2 ..... 1 Min.



- 5 (Action) MOTHER APPEARS ..... Recitativo No. 1 (Rapee-Axt) ..... 1¾ Min.



- 6 (Title) FOUR SUMMERS LATER ..... Animal Crackers (Rich) ..... 2¼ Min.



- 7 (Action) EXTERIOR OF COTTAGE ..... Heart's Desire (Varley) ..... ½ Min.



8 (Action) FLASH-BACK TO PARTY ..... Got No Time (Kahn) ..... 4 Min.

*All<sup>o</sup>*  
  
Copyr. 1926 Remick & Co

9 (Title) IN THE HOPE OF ..... A Reminiscence from "Melodie Sketches" (Lemare) ..... 1/2 Min.

*Adagio*  
  
Copyr. 1925 Sam Fox

10 (Action) GIRLS' LEGS APPEARS ..... Chatter (Kahn) ..... 2 1/4 Min.

*All<sup>o</sup>*  
  
Copyr. 1926 Sonnemann M. Co

11 (Action) TOM AND GIRL LEAVE ..... Reverie (Conterno) ..... 3/4 Min.

*Mod<sup>o</sup>*  
  
Copyr. 1926 G. J. Lipstein

12 (Action) FLASH-BACK TO PARTY ..... Dans les Steppes (Volpatti) ..... 3/4 Min.

*Valse lento*  
  
Copyr. 1913 F. Salabert

13 (Title) ON THE ROAD TO NEW YORK ..... Jolly Trotters (Gillet) ..... 1 1/4 Min.

*All<sup>o</sup> ma non troppo*  
  
Copyr. 1926 Manus Music

14 (Action) MYRTLE APPEARS ..... Just a Girl You Wouldn't Marry (Landau-Springer) ..... 1/2 Min.

*Espressivo*  
  
Copyr. 1926 Shapiro-Bernstein

15 (Action) FLASH-BACK TO JAY ..... Village Holiday (Gillet) ..... 3/4 Min.

*Animato*  
  
Copyr. 1926 Manus Music

16 (Action) GATSBY ENTERS ..... Second Misterioso a la Valse (Savino) ..... 3 1/2 Min.

*All<sup>o</sup> mod<sup>o</sup>*  
  
Copyr. 1925 Robbins Engel

17 (Action) KNOCK ON DOOR ..... Elegie (Lubomirsky) ..... 1/2 Min.

*Adagio*  
  
Copyr. 1918 G. Schirmer

18 (Action) DAISY RECOGNIZES GATSBY ..... NOTE: Play first movement only, Piano sustain chords in place of arpeggios. Repeat Theme No. 2 ..... 2 1/2 Min.

*Valse lento*

19 (Action) PUPPY DRINKING MILK ..... Follow the Swallow (Henderson) ..... ½ Min.

*Modto*  
Musical notation for 'PUPPY DRINKING MILK' in treble clef, 2/4 time, key of B-flat major. The melody consists of eighth and quarter notes.  
Copyr. 1924 Remick & Co

NOTE: Play one chorus, then segue.  
20 (Action) MYRTLE AND TOM ON DIVAN ..... I Love My Baby (Warren) ..... 1¼ Min.

*Modto*  
Musical notation for 'MYRTLE AND TOM ON DIVAN' in treble clef, 2/4 time, key of B-flat major. The melody features eighth and quarter notes.  
Copyr. 1925 Shapiro Bernstein Co

21 (Action) GATSBY'S HOME ..... Alluring Coquetry (Baron) ..... 2¾ Min.

*Allto scherz.*  
Musical notation for 'GATSBY'S HOME' in treble clef, 3/8 time, key of B-flat major. The melody is more rhythmic with eighth notes.  
Copyr. 1925 Belwin Inc

22 (Action) FLASH-BACK TO MYRTLE AND TOM ..... I'm Sitting On Top of the World (Henderson) ..... ½ min.

*Modto*  
Musical notation for 'FLASH-BACK TO MYRTLE AND TOM' in treble clef, 2/4 time, key of B-flat major. The melody is simple with quarter notes.  
Copyr. 1925 Leo Feist

23 (Action) INSERT—LAWYER'S CARD ..... Appassionato Dramatico (Berge) ..... 1 Min.

*Con moto appassion.*  
Musical notation for 'INSERT—LAWYER'S CARD' in treble clef, 2/4 time, key of B-flat major. The melody is more complex with eighth and sixteenth notes.  
Copyr. 1925 Robbins Engel

24 (Action) DAISY AND GATSBY ..... Memories (Van Alstyne) ..... 1¼ Min.

*Slowly*  
Musical notation for 'DAISY AND GATSBY' in treble clef, 3/8 time, key of B-flat major. The melody is slow and features eighth notes.  
Copyr. 1915 Remick & Co

25 (Action) THEY CONTINUE THROUGH HOUSE ..... Repeat Theme No. 2 ..... 1¾ Min.

*Valse lento*  
Musical notation for 'THEY CONTINUE THROUGH HOUSE' in treble clef, 3/4 time, key of B-flat major. The notation shows a few notes on a staff.  
Copyr. 1915 Remick & Co

26 (Title) JORDAN AND TOM ARE AT MY COTTAGE. Misterioso alla Valse (Savino) ..... 2¾ Min.

*Valse modto*  
Musical notation for 'JORDAN AND TOM ARE AT MY COTTAGE' in treble clef, 3/4 time, key of B-flat major. The melody is in a waltz style.  
Copyr. 1923 G. Schirmer

27 (Action) CAR STOPS AT GARAGE ..... Dram. Andante No. 39 (Berge) ..... 2½ Min.

*Andte molto*  
Musical notation for 'CAR STOPS AT GARAGE' in treble clef, 3/4 time, key of B-flat major. The melody is slow and dramatic.  
Copyr. 1917 S. M. Berg

28 (Action) TOM AND FRIENDS ENTER APARTMENT. Here In My Arms (Rodgers) ..... 2¾ Min.

*Modto*  
Musical notation for 'TOM AND FRIENDS ENTER APARTMENT' in treble clef, 2/4 time, key of B-flat major. The melody is simple and rhythmic.  
Copyr. 1925 Harms Inc

29 (Title) I SUPPOSE I SHOULD STAND BY ..... Appassionato No. 1 (Rapee-Axt) ..... 3 Min.

*Allto agitato*  
Musical notation for 'I SUPPOSE I SHOULD STAND BY' in treble clef, 2/4 time, key of B-flat major. The melody is fast and agitated.  
Copyr. 1923 Robbins Engel

30 (Title) NOT FOR A ..... Tragic Moments (Becce) ..... 1½ Min.

*Andte mosso*

Copyr. 1925 Schlesinger

31 (Action) MECHANIC IN ROOM—FINDS EVIDENCE.. Agitated Hurry No. 2 (Berge) ..... 3¼ Min.

*Adagio*

Copyr. 1926 Robbins Engel

32 (Action) INTERIOR NIGHT SCENE AT GARAGE..... Pique Dame (Tschaikowsky) ..... ½ Min.  
NOTE: Repeat first movement, then straight : head. Timpany solo roll after accident until next cue.

*Andte non tanto*

Copyr. Manus Music Co

33 (Action) CHANGE OF SCENE ..... Sicilian Vespers (Verdi) ..... 1½ Min.

*Largo*

Copyr. 1914 Junquiel

34 (Action) TOM AND DAISY IN ROOM ..... Manuel Menendez (Filiasi) ..... 1¾ Min.  
NOTE: Play first movement "PP" and very slow.

*Adagio*

Copyr. 1904 Ed. Sonzogno

35 (Title) SO HE KEPT HIS VIGIL ..... Repeat Theme No. 2 ..... ½ Min.

*Valse lente*

36 (Title) HIS DREAM HAD BROKEN ..... Adagio No. 2 (Tschaikowsky) ..... 3 Min.

*Adagio maestoso*

Copyr. 1920 A.J. Benjamin

37 (Action) MECHANIC APPEARS AT WINDOW ..... Mystere Oppressant (Gabriel-Marie) ..... 3 Min.

*Andte*

Copyr. 1924 S. Chapelier

38 (Title) OBSCURELY AS IT BEGAN ..... Adagio Pathetique (Godard) ..... 3¼ Min.  
NOTE: Drummer place two pistol shots about fifteen seconds apart as Jay is startled while reading on bench.

*Adagio*

Copyr. 1910 G. Schirmer

39 (Title) SO WE BEAT ON ..... Repeat Theme No. 2 ..... ¾ Min.

*Valse lento*

NOTE: Start softly and very broad; finish "F" with picture.  
**THE END**

Country of Origin, U. S. A.

Orchestrations or single piano parts of each separate musical selection suggested hereon, can be purchased from. CAMEO MUSIC SERVICE CORPORATION, 315-317 WEST 47TH STREET, NEW YORK CITY.