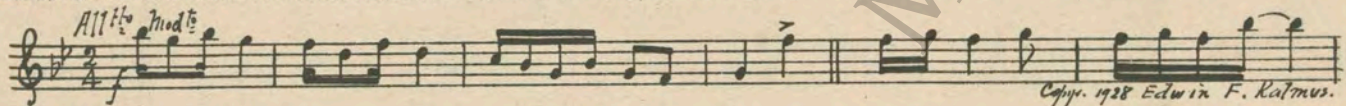


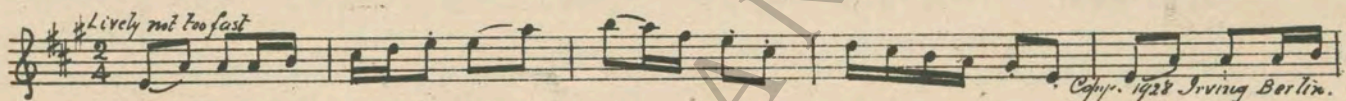
One Theme

John McCormick
 presents
COLLEEN MOORE
 in
"HAPPINESS AHEAD"
 with
EDMUND LOWE
 From the story by Edmund Goulding
 Scenario by Benjamin and Glazer
A William A. Seiter Production
 Compiled by Eugene Conte
A First National Picture


1 AT SCREENINGTopsy (Dunning) 1 Min.

All^{te} Mod^{to}

 Copyr. 1928 Edwin F. Kalmus.

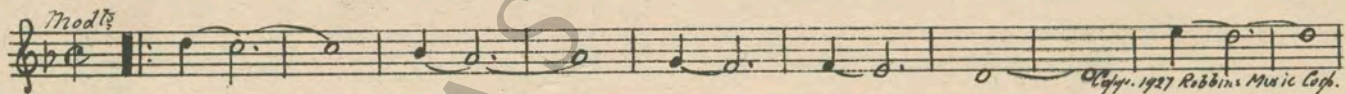
2 (Title) IN A FASHIONABLERustic Idyl (Pasternack) 1½ Min.

Lively not too fast

 Copyr. 1928 Irving Berlin.

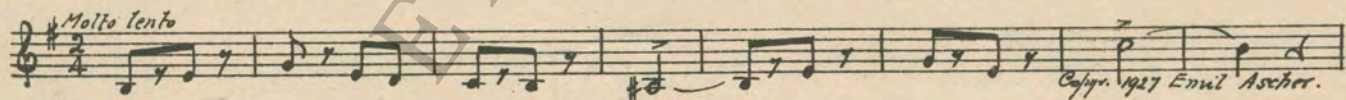
3 (Action) AFTER THREE MEN LEAVESecond Love Tragedy (Savino) 2 Min.

Assai sost.

 Copyr. 1928 Robbins Music Corp.

4 (Action) BABE IN BATHROOMCalling (Golden) ½ Min.

Mod^{to}

 Copyr. 1927 Robbins Music Corp.

5 (Action) MAN AT PHONECreeping Creatures (Varnier) ½ Min.

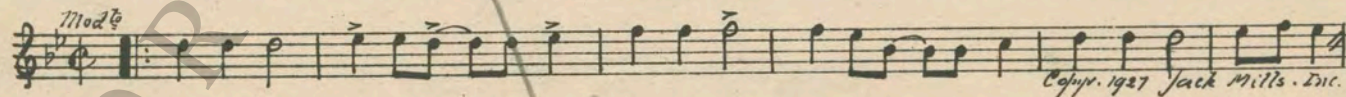
Molto lento

 Copyr. 1927 Emil Ascher.

6 (Title) MILES AWAYThought (Deyo) 1 Min.

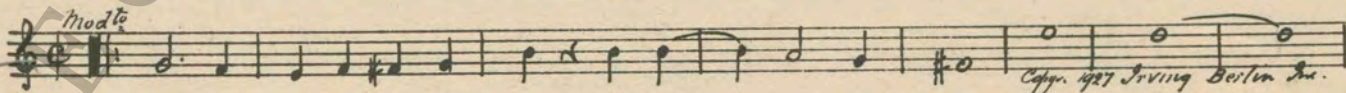
Slowly

 Copyr. 1928 G. Schirmer.

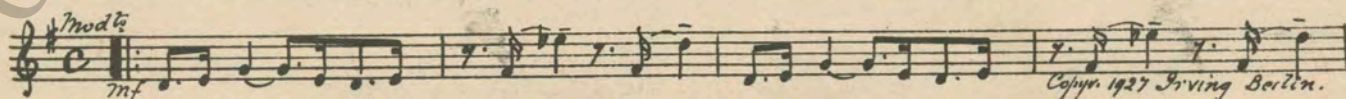
7 (Action) BABE LEAVES ROOMFollowing You Around (Kahn) 1½ Min.

Mod^{to}

 Copyr. 1927 Jack Mills, Inc.

8 (Action) CLOSE-UP OF MARYI've Been Longing For a Girl Like You (Johnson)..... ½ Min.

Mod^{to}

 Copyr. 1927 Irving Berlin, Inc.

9 (Title) YES SIRThe Gawky Rube (Lakay) 2 Min.

Mod^{to}

 Copyr. 1927 Irving Berlin.

I want you to meet — Theme

10 (Title) I WANT YOU TO MEET THEME: Mary's a Grand Old Name (Cohan) 1/2 Min.

Ballad Tempo

 Musical notation for 'I WANT YOU TO MEET' in G major, 2/4 time, Ballad Tempo. The melody starts with a quarter rest followed by a quarter note G, then a half note A-B, and continues with a series of quarter and eighth notes. Copyright 1924 Robbins Music Corp.

11 (Action) MARY RUNS INTO ROOM Fanchonette (Klemm) 2 Min.

All^o mod^o

 Musical notation for 'MARY RUNS INTO ROOM' in G major, 2/4 time, All^o mod^o. The melody consists of a series of eighth and sixteenth notes. Copyright 1927 Behm Inc.

12 (Action) FADE-OUT MARY AND FRIEND LYING ON BED Among My Souvenirs (Nicholls) 1/2 Min.

And^{te} mod^o

 Musical notation for 'FADE-OUT MARY AND FRIEND LYING ON BED' in G major, 2/4 time, And^{te} mod^o. The melody is a simple, slow-moving line. Copyright 1927 De Sylva, Brown, Henderson.

13 (Action) ORCHESTRA STOPS PLAYING Orchestra Tacet 1/4 Min.

14 (Action) MARY STARTS TO PLAY Silver Song Bird (Berchman) 1/2 Min.

Mod^o

 Musical notation for 'MARY STARTS TO PLAY' in G major, 2/4 time, Mod^o. The melody features a series of quarter notes. Copyright 1927 Edw. B. Marks.

15 (Action) MARY STOPS SINGING—PEOPLE APPLAUD. Social Chat (Eugene) 1 Min.

All^o mod^o

 Musical notation for 'MARY STOPS SINGING—PEOPLE APPLAUD' in G major, 2/4 time, All^o mod^o. The melody is a rhythmic eighth-note pattern. Copyright 1926 Emil Ascher, Inc.

16 (Action) MARY AND BABE LEAVE PARENTS Repeat Theme No. 10 2 Min.

Ballad Tempo

 Musical notation for 'MARY AND BABE LEAVE PARENTS' in G major, 2/4 time, Ballad Tempo. The notation shows a few notes on a staff, indicating the start of the repeated theme.

17 (Title) I'VE NEVER BEEN ENGAGED Flirtation (Cross) 1 1/2 Min.

All^o mod^o

 Musical notation for 'I'VE NEVER BEEN ENGAGED' in G major, 2/4 time, All^o mod^o. The melody is a lively eighth-note pattern. Copyright 1918 Sam Fox.

18 (Action) FATHER COMES UP TO LOVERS The Joker (Srawley) 3/4 Min.

Mod^o Comic

 Musical notation for 'FATHER COMES UP TO LOVERS' in G major, 2/4 time, Mod^o Comic. The melody is a simple, rhythmic line. Copyright 1926 G. Schirmer.

19 (Title) ANOTHER MEMBER OF THE Third Misterioso a la Valse (Savino) 1 3/4 Min.

All^o mod^o

 Musical notation for 'ANOTHER MEMBER OF THE' in G major, 2/4 time, All^o mod^o. The melody is a rhythmic eighth-note pattern. Copyright 1928 Robbins Music Corp.

20 (Action) FADE-OUT BABE AND MAN IN ROOM Repeat Theme No. 10 2 1/2 Min.

Ballad Tempo

 Musical notation for 'FADE-OUT BABE AND MAN IN ROOM' in G major, 2/4 time, Ballad Tempo. The notation shows a few notes on a staff, indicating the start of the repeated theme.

21 (Title) AND WE'LL HAVE A CHURCH WEDDING. Wedding Blues (Friml) 3 Min.

Tempo giusto

 Musical notation for 'AND WE'LL HAVE A CHURCH WEDDING' in G major, 2/4 time, Tempo giusto. The melody is a simple, slow-moving line. Copyright 1919 G. Schirmer.

22 (Action) MARY'S PARENTS LEAVE BABE Repeat Theme No. 10 1/2 Min.

Ballad Tempo

 Musical notation for 'MARY'S PARENTS LEAVE BABE' in G major, 2/4 time, Ballad Tempo. The notation shows a few notes on a staff, indicating the start of the repeated theme.

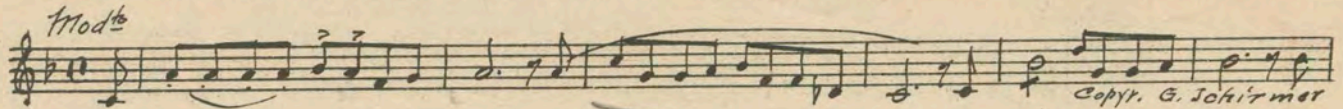
23 (Action) FADE-IN CHIMES Repeat No. 21 "Wedding Blues" 1/2 Min

Tempo giusto

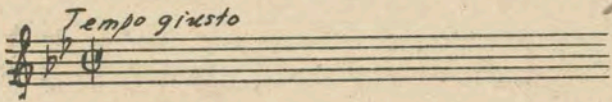
 Musical notation for 'FADE-IN CHIMES' in G major, 2/4 time, Tempo giusto. The notation shows a few notes on a staff, indicating the start of the repeated theme.

NOTE: Play chimes throughout.

24 (Action) MARRIAGE CEREMONY O Promise Me (DeKoven) 1/2 Min.



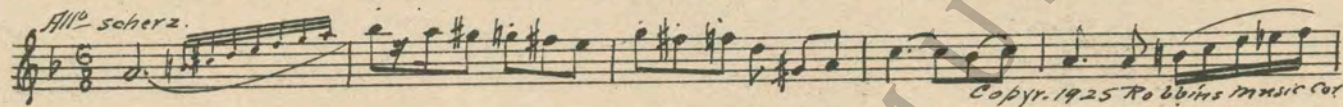
25 (Action) MARY AND MOTHER PACKING Repeat No. 21 "Wedding Blues" 2 1/2 Min.



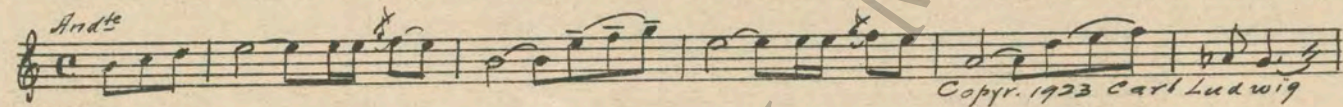
26 (Action) FADE-OUT TAXI A Busv Thoroughfare (Baron) 1/2 Min.



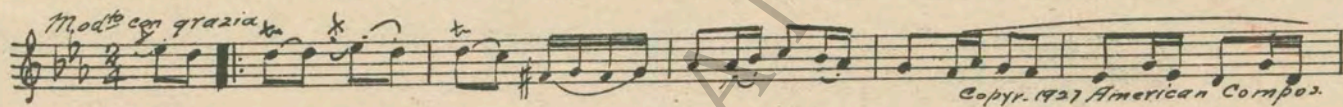
27 (Action) CLOSE-UP BABE IN ROOM Cynical Scherzando (Axt) 1/2 Min.



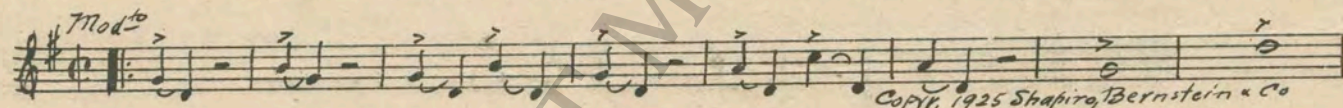
28 (Action) MARY PRAYING Prelude to An Imaginary Drama (Gliwudski) 1/2 Min.



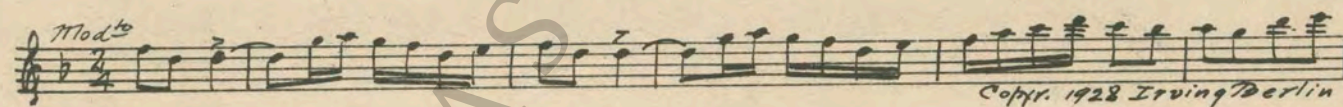
29 (Action) STREET SCENE A Gay Lothario (Bierman) 2 1/2 Min.



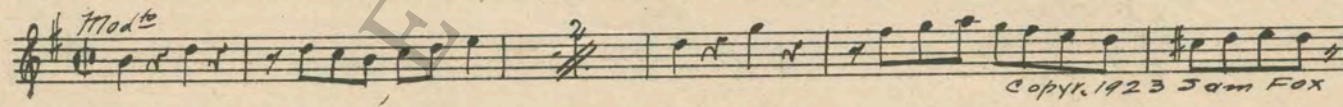
30 (Action) MAN AT DOOR SELLING MAGAZINES Collegiate (Jaffe) 1 1/4 Min.



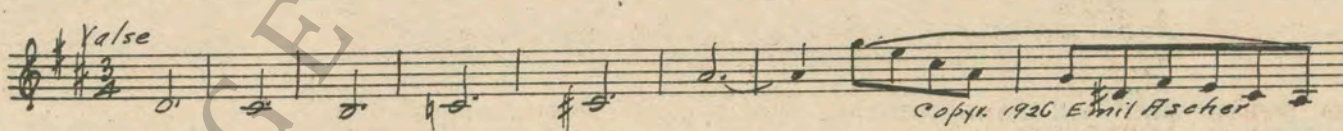
31 (Action) MAN RECEIVES MONEY Gay Deceivers (Claypoole) 3 1/4 Min.



32 (Action) CLOSE-UP OF CAKE Soiree (Zamecnik) 1 1/2 Min.



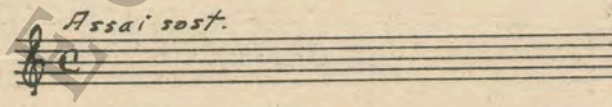
33 (Action) FADE-OUT MARY AND BABE KISS Valse Nanette (Friml) 1 1/4 Min.



34 (Action) BABE AND MARY IN BED Cuddle Closer (Schwartz) 1 Min.

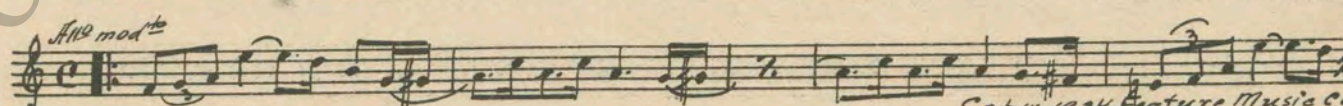


35 (Action) FADE-OUT MARY AND BABE IN BED Repeat No. 3 "Second Love Tragedy" 1 1/4 Min.



Tragic theme

36 (Action) FADE-OUT OFFICE SCENE Garden Whispers (Herkan) 1/2 Min.



D - Close up of foot steps

37 (Action) CLOSE-UP OF FOOTSTEPS Into the Unknown (Carbonara) 2½ Min.

Mod^{to}

Copyr. 1928 Irving Berlin

38 (Action) MARY GOES TO DETECTIVE Repeat No. 19 "Third Misterioso a la Valse" 2 Min.

39 (Action) BABE ENTERS ROOM Tears of Sorrow (Savino) 1 Min.

And^{te} mod^{to}

Copyr. 1928 Robbins Music Cor.

40 (Title) AN HOUR LATER Romance (Frommel) 2¼ Min.

And^{te} sost.

Copyr. 1915 G. Schirmer

41 (Action) BABE ENTERS—SEES MARY Repeat Theme No. 10 2 Min.

42 (Action) INSERT—NEWSPAPER Love Song (Wright) 1 Min.

And^{ino}

Copyr. 1920 G. Schirmer

43 (Action) HAND ON BELL Repeat No. 19 "Third Misterioso a la Valse" 1 Min.

44 (Action) MARY AND DETECTIVE ALONE Griefstricken (Varnier) 3½ Min.

Lento mod^{to} espressivo

Copyr. 1928 Emil Oescher

45 (Action) DETECTIVE LEAVES Remorse (Franceschi) 3½ Min.

Lento maestoso

Sonnenmann Music Co.

46 (Action) BABE SEEN IN CELL The Captive (Savino) 2 Min.

Grave e sostenuto

Copyr. 1927 Robbins Music Cor.

47 (Action) MARY ENTERS HOME Lamento (Jacquet) 2½ Min.

And^{te}

Irving Berlin

48 (Action) MARY READS LETTER Dolores (Kay) 2 Min.

And^{te} sostenuto

Copyr. 1925 Furster Music Co.

49 (Action) INSERT—COURT ORDER Prelude (Mendoza) 1¼ Min.

And^{te}

Copyr. 1927 Robbins Music Cor.

50 (Action) MARY AND BABE EMBRACE Repeat Theme No. 10 1¼ Min.

51 (Action) BABE OPENS BAG Canzonetta (Hollaender) 1 Min.

All^o

Copyr. 1918 G. Schirmer

52 (Title) YOU LOOK BETTER TO ME Repeat No. 49 "Prelude" 2½ Min.

53 (Action) BABE TAKES PHOTO FROM MARY Joyous Appassionato (Carbonara) 1½ Min.

Mod^{to} con moto

Copyr. 1927 Robbins Music Cor.

54 (Action) MARY SHOWS CHILD'S CLOTHES Repeat Theme No. 10 1¼ Min.

THE END

Printed in U. S. A.

Complete orchestrations and single piano parts of each separate number contained hereon, can be purchased from CAMEO MUSIC SERVICE CORPORATION, 315-317 WEST 47TH STREET, NEW YORK CITY.

95:1863:1