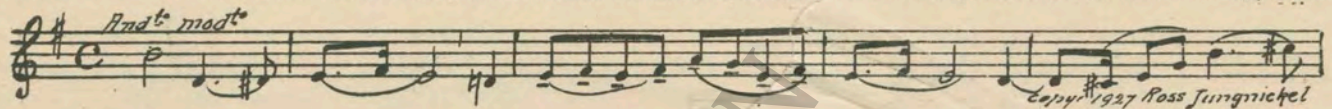


Esther

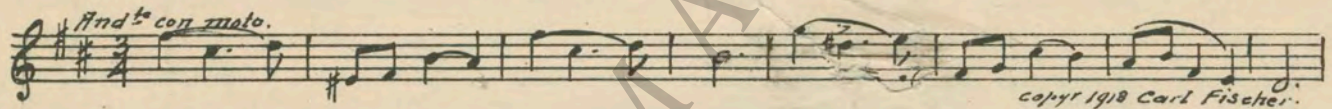


Joseph P. Kennedy
presents
JEAN STRATTON PORTER'S
Greatest Novel—The Sweetest Story Ever Told
"THE HARVESTER"
with
ORVILLE CALDWELL and NATALIE KINGSTON
A Leo Meehan Production
Compiled by James C. Bradford
Distributed by
F B O Pictures Corporation

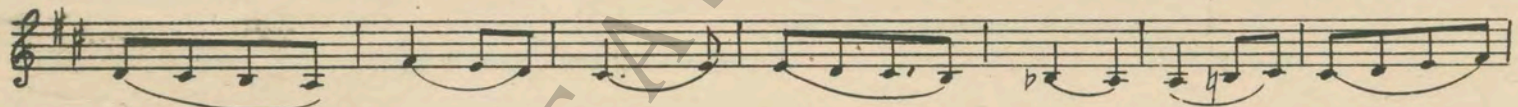
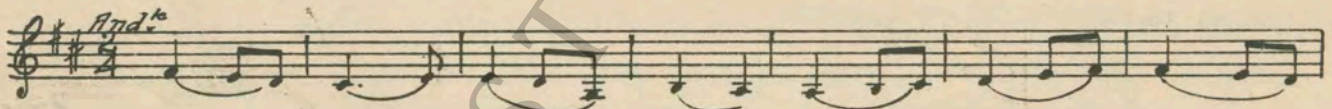
1 AT SCREENING Love Romance (Bruhns) 2¾ Min.



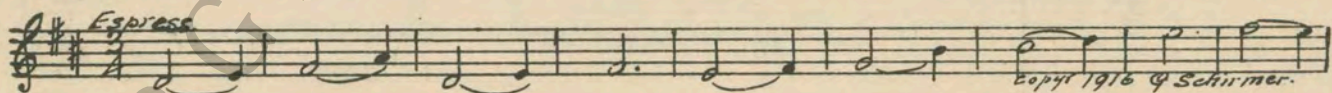
2 (Title) LOOK BEL, ACRES OF GINSING Romance sans Paroles (Van Goens) 2 Min.



3 (Action) HE LEAVES DRYING ROOM HARVESTER THEME: Song Without Words (Rebikoff) ... 2¼ Min.



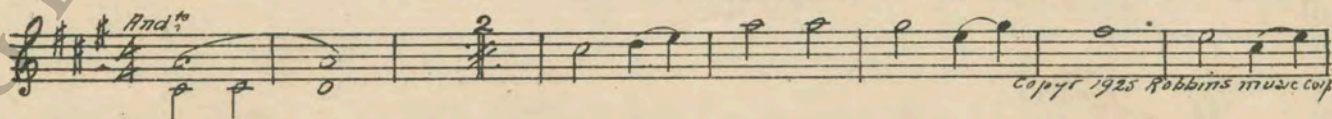
4 (Action) LOOKS AT MOTHER'S PICTURE Mother (Romberg) ½ Min.



5 (Action) NIGHT AT WATERS EDGE Dawn (Friml) 2½ Min.



6 (Title) HOW ABOUT THE GIRL Les Champs (Bradford) 1¼ Min.



7 (Action) HE SEES MIRAGE Dream Music from "Naughty Marietta" (Herbert) 1¼ Min.

And^t espress

Copyright 1910 M. Witmark & Sons.

8 (Title) SINCE THE BEGINNING OF TIME Debutante (Rapee-Axt) 2½ Min.

Mod^t

Copyright 1923 Robbins Music Corp.

9 (Title) SPRING AGAIN Repeat No. 7 "Dream Music" 1½ Min.

And^t e.

10 (Action) GRANNY MORELAND ENTERS Stephanie Gavotte (Czibulka) 1¾ Min.

Gavotte.

Copyright 1923 Emil Fischer.

11 (Action) GRANNY AND DAVID LOOK FROM WINDOW Repeat No. 7 "Dream Music" ½ Min.

And^t espress.

12 (Title) THE NEXT DAY Agitato Drammatico (Savino) 1¼ Min.

All^t molto.

Copyright 1925 Robbins Music Corp.

13 (Action) DAVID SEES RUTH RUTH THEME: Adoration (Filippucci) 4 Min.

Mod^t

Copyright 1906 Etzschka & Co.

14 (Action) JAMESON APPEARS ON PORCH The Captive (Savino) 1 1/4 Min.

Musical notation for item 14: Treble clef, C major, common time. Tempo: *Grove e sost.* Copyright 1927 Robbins musica.

15 (Action) DAVID CUTTING NOTCHES IN TREE Repeat No. 7 "Dream Music" 2/4 Min.

Musical notation for item 15: Treble clef, D major, common time. Tempo: *And^{te} espress.*

16 (Action) RUTH STARTS TO DRAW A Love Song (Bartlett) 3 1/2 Min.

Musical notation for item 16: Treble clef, D major, 2/4 time. Tempo: *And^{te} con moto.* Copyright 1910 G. Schirmer.

17 (Action) JAMESON CONFRONTS RUTH Dramatic Agitato (Simon) 2 1/4 Min.

Musical notation for item 17: Treble clef, D major, 3/4 time. Tempo: *Con moto.* Copyright 1920 Belwin Inc.

18 (Title) RUTH, WILL YOU MARRY ME? Repeat No. 7 "Dream Music" 1 1/4 Min.

Musical notation for item 18: Treble clef, D major, common time. Tempo: *And^{te} espress.*

19 (Action) INSERT—WEDDING TEXT Traumerer (Schumann) 1/2 Min.

Musical notation for item 19: Treble clef, D major, common time. Tempo: *And^{te}.* Copyright 1897 Carl Fischer.

20 (Title) THEY RODE HOME Enchanting Night (Zamecnik) 1 1/4 Min.
NOTE: Play "PP" con sordini strings only.

Musical notation for item 20: Treble clef, D major, 2/4 time. Tempo: *And^{te}.* Copyright 1934 Sam Fox Pub. Co.

21 (Title) GO IN AND TAKE POSSESSION Repeat Harvester Theme No. 3 3 Min.

Musical notation for item 21: Treble clef, D major, 2/4 time. Tempo: *And^{te}.*

22 (Action) THEY STOP AT MOTHER'S GRAVE Little Mother of Mine (Burleigh) 2 Min.

Musical notation for item 22: Treble clef, D major, 3/4 time. Tempo: *And^{te} cantabile.* Copyright 1917 Ricordi & Co.

23 (Action) INSERT—"RUTH, I HAVE GONE TO KEEP MY PROMISE" Repeat Harvester Theme No. 3 3/4 Min.

Musical notation for item 23: Treble clef, D major, 3/4 time. Tempo: *And^{te}.*

24 (Action) DAVID AND PROCESSION OF CHOIR BOYS APPEAR Come Hither Ye Faithful (Seredy) 1 1/4 Min.

Musical notation for item 24: Treble clef, D major, common time. Tempo: *All^{te}.* Copyright 1917 Carl Fischer.

25 (Action) CLERGYMAN AND CHOIR STOP AT GRAVE. Nearer My God to Thee (Mason) 1 Min.

Musical notation for item 25: Treble clef, D major, 8/8 time. Tempo: *And^{te}.* Copyright 1901 Carl Fischer.

NOTE: Play as Organ Solo or string quartette, "PP."

26 (Title) IN THE DAYS THAT FOLLOWED Poesia Pastorale (Rossi) 2¼ Min.

Mod^{to} Pastorale.

Copyright 1908 Carl Fischer.

27 (Action) DOG STARTS TO BARK Repeat No. 14 "The Captive" 1½ Min.

Grave e sost.

28 (Action) JAMESON LEAVES Dram. Andante No. 32 (Berge) 2 Min.

Mod^{to}

Copyright 1916 S.M. Berg.

29 (Action) FADE-IN VISION OF ILL MOTHER Andante Pathetique (Berge) 3 Min.

And^{te} sost.

Copyright 1916 S.M. Berg.

30 (Title) FOR THREE LONG DAYS Une Larme (Moussorgsky) 3 Min.

And^{te} con moto.

Copyright 1921 Carl Fischer.

31 (Title) NOTE: Play "PP" con sordini strings only, very plaintive.
RUTH, HERE IS DR. HARMON Heart Wounds (Grieg) 2¼ Min.

All^{to} espress.

Copyright 1918 Carl Fischer.

32 (Title) NOTE: Play "PP" con sordini strings only with no emotion.
THEY DID NOT DARE TELL THE HARVESTER Film Theme No. 19 (Krzyzanowski-Roberts) 3¼ Min.

tento

Copyright 1924 Carl Fischer Inc.

33 (Action) DAVID AND GRANNY ENTER BEDROOM The Swan (St. Saens) 3½ Min.

Adagio

Copyright 1906 Carl Fischer.

34 (Action) NOTE: Play "PP" con sordini strings only slowly and with pathos.
TRANSFORMATION TO CLOUDED BEDROOM Repeat No. 7 "Dream Music" 1½ Min.

And espress.

35 (Title) RECOVERY CAME SWIFTLY Repeat Ruth Theme No. 13 4 Min.

Mod^{to}

36 (Title) THIS FREES ME Repeat No. 7 "Dream Music" 1 Min.

And^{te} espress.

THE END

Printed in U. S. A.

Complete orchestrations and single piano parts of each separate number contained hereon, can be purchased from CAMEO MUSIC SERVICE CORPORATION, 315-317 WEST 47TH STREET, NEW YORK CITY.

95:1873:1