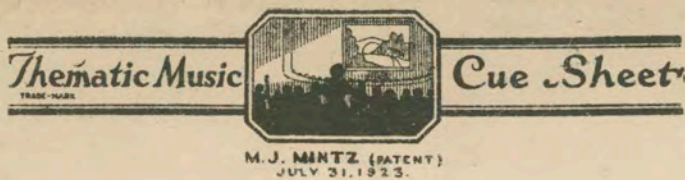


1. Trailer - In the Sweet Bye + Bye
 2. Romona
 3. Shepherd of Hills



Richard A. Rowland
 presents
BILLIE DOVE
 in
"THE HEART OF A FOLLIES GIRL"
 with
LARRY KENT
 Compiled by James C. Bradford
A First National Picture

1 AT SCREENING Princess Pat Selection (Herbert) 1 Min.

Theme

T: ai marcia Mod^{to}

 Copyright 1925 M. Witmark & Sons.

2 (Title) NEW YORK IS A CITY ROGER THEME: Forget Me Not (Macbeth) 1 1/4 Min.

Light
 Lovey dvey

All^{to}

 Copyright 1913 Carl Fischer.

3 (Action) CHAUFFEUR SLAMS DOOR ON ROGER'S FOOT Sarabande Perpetuelle (Bradford) 1 1/2 Min.

Light hurry
 cut

All^o

 Copyright 1928 Carl Fischer.

4 (Action) ROGER PICKS UP BOX OF FLOWERS Repeat Roger Theme No. 2 2 3/4 Min.

light
 movement

All^{to}

5 (Title) THE BALLYHOO OF BROADWAY Strawberries (Kaufman) 1 Min.

Puffy
 Ruffle

All^o mod^{to}

 Copyright 1926 Robbins Music Corp.

6 (Title) THE MAIN ATTRACTION My New York (Berlin) 3/4 Min.

Solles
 sel

Mod^{to}

 Copyright 1927 Irving Berlin.

7 (Action) GIRLS ENTER DRESSING ROOM TEDDY THEME: Love Song (Wright) 3/4 Min.

Con sentimento

Copyright 1920 G. Schirmer.

8 (Action) DEREK ENTERS THEATRE Chianti (Friml) 1 Min.

*Love's
Phantasy*

Musical notation for Chianti (Friml), 1 Min. *Mod^{to}* *mf* *8va* *1cc* *Copyr. 1918 G. Schirmer.*

9 (Action) DEREK ENTERS DRESSING ROOM When A Maid Comes Knocking At Your Heart (Friml) 3/4 Min.

*g.
One me one
Now - then*

Musical notation for When A Maid Comes Knocking At Your Heart (Friml), 3/4 Min. *Mod^{to}* *Copyr. 1918 G. Schirmer.*

10 (Action) CAFE DANCING SCENE Dawning (Silver) 1 1/2 Min.

*Lila
Imagination*

Musical notation for Dawning (Silver), 1 1/2 Min. *Mod^{to}* *Copyr. 1927 Irving Berlin Inc.*

11 (Title) ONE O'CLOCK I'm Falling In Love With Someone (Herbert) 3/4 Min.

*pop.
12 o'clock*

Musical notation for I'm Falling In Love With Someone (Herbert), 3/4 Min. *Valse Lento* *Copyr. 1910 M. Witmark & Sons.*

NOTE: The direct music for this sequence is "Falling In Love" by Meyer.
12 (Action) DIAL OF CLOCK AT TWO LOVE THEME: Dawn (Savino) 1 1/4 Min.

Violin

Musical notation for LOVE THEME: Dawn (Savino), 1 1/4 Min. *Espressivo*

Musical notation line 1

Musical notation line 2

Musical notation line 3 *Copyr. 1927 Paul Whiteman Pub.*

NOTE: Play "PP" con sordini strings only.
13 (Title) YOUTH AND LOVE Your Love Is All (Zamecnik) 4 Min.

*Start
Theme
in cab*

*So this
is love
- theme*

Musical notation for Your Love Is All (Zamecnik), 4 Min. *Mod^{to}* *Copyr. 1927 Sam Fox.*

14 (Title) SO DEREK WENT AWAY Polly (Zamecnik) 2 1/4 Min.

Lightwood

Musical notation for Polly (Zamecnik), 2 1/4 Min. *Brightly* *Copyr. 1926 Sam Fox, Pub.*

15 (Action) DEREK APPEARS AGAIN Life and Love (Herbert) 1 1/4 Min.

*Goodbye
Happy*

Musical notation for Life and Love (Herbert), 1 1/4 Min. *Mod^{to}* *mf* *Copyr. 1919 M. Witmark & Sons*

16 (Action) DEREK PICKS UP PHOTOGRAPH Repeat Love Theme No. 12 1 1/4 Min.

Love

Musical notation for Repeat Love Theme No. 12, 1 1/4 Min. *Espressivo*

17 (Action) DEREK CHANGES EXPRESSION Prologue (Sommer) 1/2 Min.

Drama
Musical notation for item 17: Treble clef, key signature of one sharp (F#), 4/4 time signature. Tempo marking: *Poco adagio sostenuto*. Copyright: 1935 Heinrich Heine.

18 (Title) TEDDY AND FLORINE ALWAYS WAKE UP. Nola (Arndt) 2 Min.

*Stepping in
Indies*
Musical notation for item 18: Treble clef, key signature of one sharp (F#), 4/4 time signature. Tempo marking: *Mod.^{to}*. Dynamics: *mf*. Copyright: 1916 Sun Fox, Pub. Co.

19 (Action) DEREK TELEPHONING Repeat Love Theme No. 12 1/2 Min.

*Lorry for
me*
Musical notation for item 19: Treble clef, key signature of one sharp (F#), 4/4 time signature. Tempo marking: *Espressivo*.

20 (Title) THE OLD, OLD STORY I'm Away From the World When I'm Away From You (Pollack) 2 3/4 Min.

Theme
Musical notation for item 20: Treble clef, key signature of one sharp (F#), 3/4 time signature. Tempo marking: *Mod.^{to}*. Copyright: 1927 M. Witmark & Sons.

21 (Action) ROGER TWIRLING BRACELET Repeat Roger Theme No. 2 2 1/4 Min.

*Added to
Berlin*
NOTE: Play "PP" con sordini strings only.
Musical notation for item 21: Treble clef, key signature of one sharp (F#), 4/4 time signature. Tempo marking: *All.^{to}*.

22 (Action) CAR DRIVES UP TO CURB Appassionata (Clutsam) 3 Min.

2 dram
Musical notation for item 22: Treble clef, key signature of one sharp (F#), 3/8 time signature. Tempo marking: *All.^{to} con brio*. Dynamics: *mf*. Copyright: 1926 Hawkes & Son.

23 (Action) TEDDY LEAVES—ROGER PUSHES BUTTON. Repeat Roger Theme No. 2 1/2 Min.

Drama
Musical notation for item 23: Treble clef, key signature of one sharp (F#), 4/4 time signature. Tempo marking: *All.^{to}*.

24 (Title) IF I'D ONLY KNOWN Adventure d'Amour (Bradford) 1 3/4 Min.

Remove
Musical notation for item 24: Treble clef, key signature of one sharp (F#), 8/8 time signature. Tempo marking: *All.^{to}*. Copyright: 1927 Robbins Music Corp.

25 (Action) DEREK ENTERS ROOM Dramatic Appassionato (Ciganeri) 2 1/2 Min.

*Love
to here*
Musical notation for item 25: Treble clef, key signature of one sharp (F#), 4/4 time signature. Tempo marking: *And.^{te} con moto*. Copyright: 1925 Belwin Inc.

26 (Title) I'M A THIEF Grand Appassionato (Becce) 2 Min.

*As a
derek leaves
Theme*
Musical notation for item 26: Treble clef, key signature of one sharp (F#), 4/4 time signature. Tempo marking: *And.^{te} deciso*. Copyright: Belwin Inc.

27 (Action) ROGER AT DESK—OPENS LETTER Dante's Inferno (Borch) 3/4 Min.

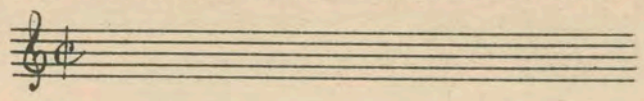
Drama
Musical notation for item 27: Treble clef, key signature of one sharp (F#), 4/4 time signature. Tempo marking: *All.^{to}*. Copyright: 1925 Belwin Inc.

Prelude

Quick one

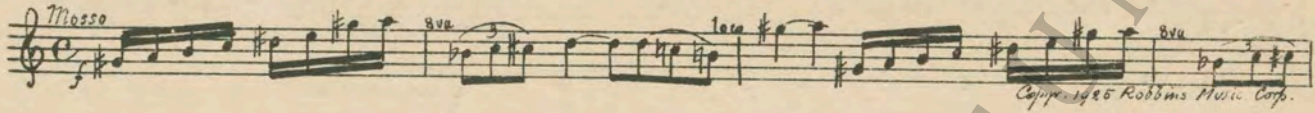
28 (Action) STAGE OF FOLLIESRepeat No. 6 "My New York"3/4 Min.

*Georgie
Porgie*



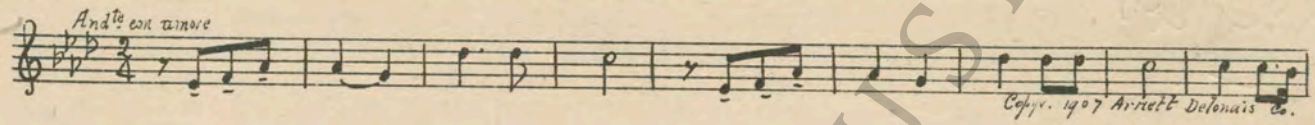
29 (Action) ROGER AND DETECTIVE ENTER DRESSING ROOMAppassionato In A Minor (Savino)3 Min.

*agitato
slow
climax*



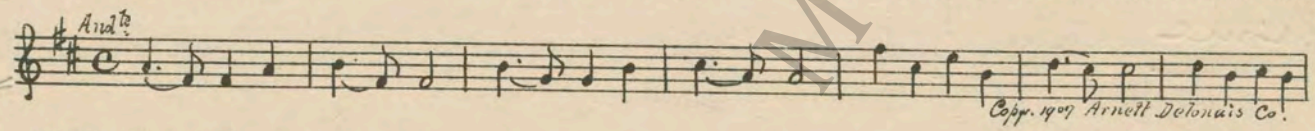
30 (Title) SO THE LAW TOOK ITS COURSE.....I Love You Truly (Bond)1 1/4 Min.

Theme



31 (Title) NEW YEAR'S EVEJust A Wearyin' For You (Bond)3/4 Min.

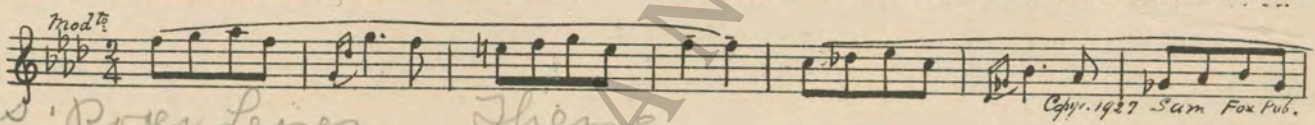
In the evening



32 (Action) ROGER ENTERS DRESSING ROOMRemorse (Zamecnik)3 Min.

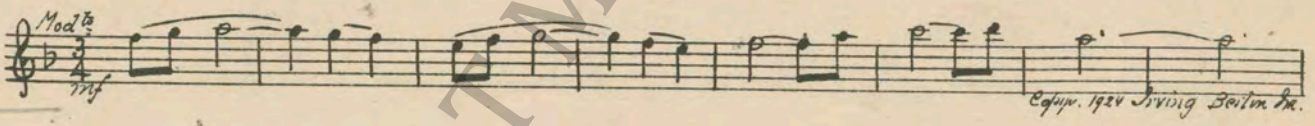
NOTE: Play "PP" con sordini strings only.

Appassato



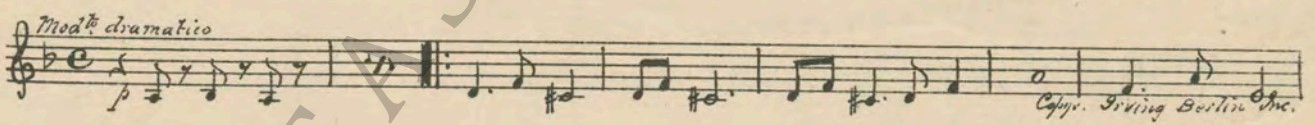
33 (Action) TEDDY ENTERS APARTMENTAll Alone (Berlin)3/4 Min.

*continue
Theme*



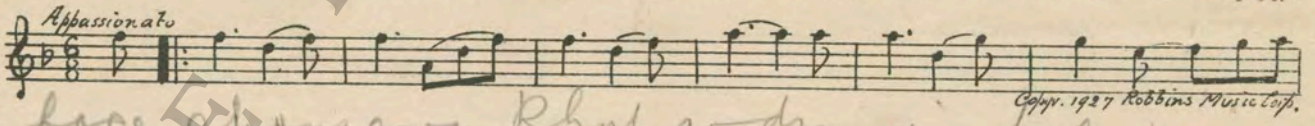
34 (Action) DEREK AT DOORRhythmic Misterioso (Damesek)3/4 Min.

mist



35 (Title) NO, I ESCAPEDAgitated Appassionato (Kilenyi)3 3/4 Min.

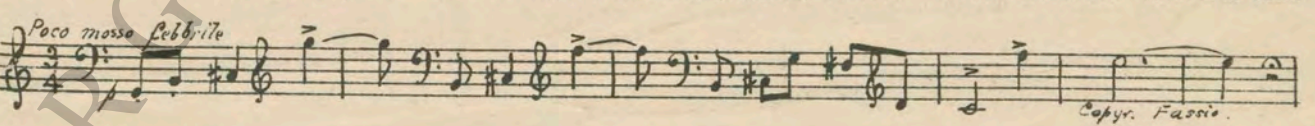
*Mean
Andante*



36 (Action) CHANGE FOR LAPSE OF TIMEBinibo Morente (Culotta)2 Min.

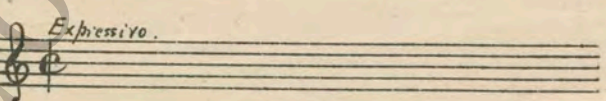
His face changes - Rhapsody in Blue

*continue
Theme*



37 (Title) POLICE HEADQUARTERSRepeat Love Theme No. 121/2 Min.

Theme



THE END

Printed in U. S. A.

Complete orchestrations and single piano parts of each separate number contained hereon, can be purchased from CAMEO MUSIC SERVICE CORPORATION, 315-317 WEST 47TH STREET, NEW YORK CITY

95:1876:1