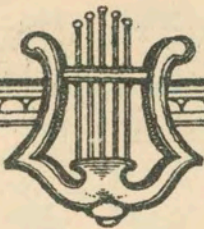
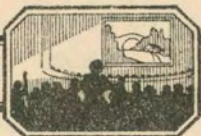


DVII 24.

SUNDAY



Thematic Music



Cue Sheet

M. J. MINTZ (PATENT)
JULY 31, 1923.

ASSOCIATED PICTURES CORP.

PRESENTS

"Heart Of A Siren"

A Sawyer—Lubin Production

WITH

Barbara La Marr and Conway Tearle

A FIRST NATIONAL PICTURE

MUSIC COMPILED BY

JAMES C. BRADFORD

Complete Orchestrations and single parts of all compositions contained herein can be purchased from CAMEO
MUSIC SERVICE CORPORATION, 112-118 West 44th Street, New York City

MADE IN U. S. A.

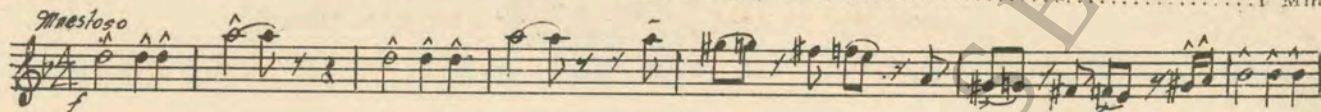


M. J. MINTZ (PATENT)
JULY 31, 1923.

"HEART OF A SIREN"

Music compiled by James C. Bradford

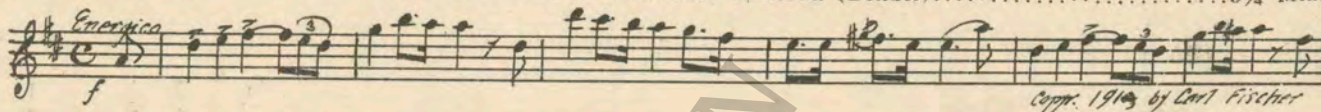
- 1 AT SCREENING Antigone (Buisson) 1 Min.



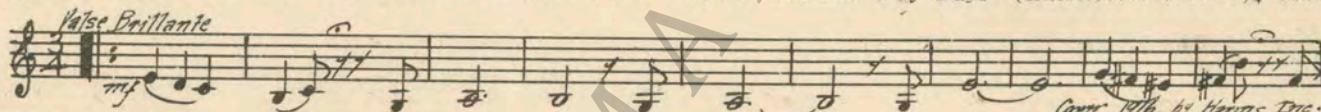
- 2 (Action) HOTEL GARDEN Cosi Fan Tutte (Mozart) 2¼ Min.



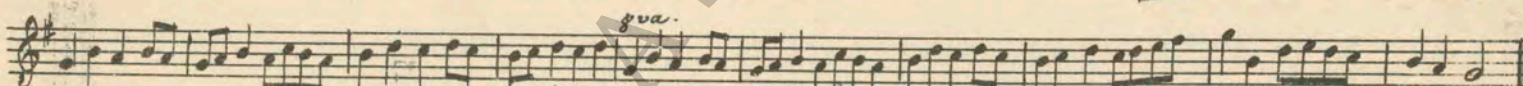
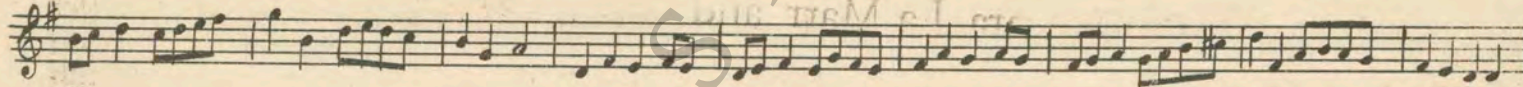
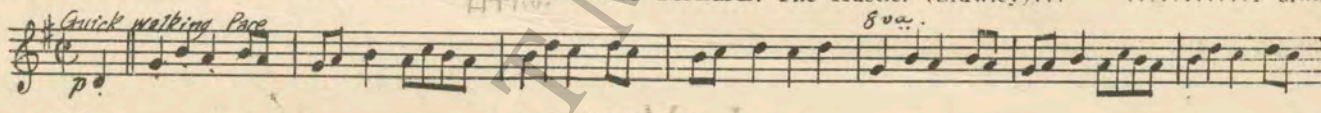
- 3 (Title) WHO'S ARRIVING Une Promenade de Matin (Bendel) 3¾ Min.



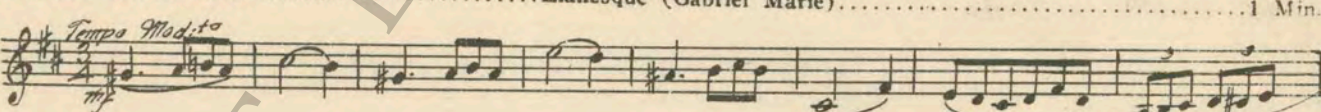
- 4 (Action) PAGE BOY RUNS INTO ISABELLA Lilacland "May Dreams and Grey Days" (Elliott) 1¼ Min.



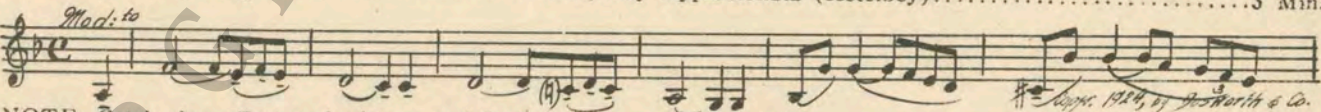
- 5 (Action) MAXIM SPEAKS TO ISABELLA MAXIM THEME: The Hustler (Srawley) 1 Min.



- 6 (Action) ISABELLA ON DIVAN Lianesque (Gabriel Marie) 1 Min.

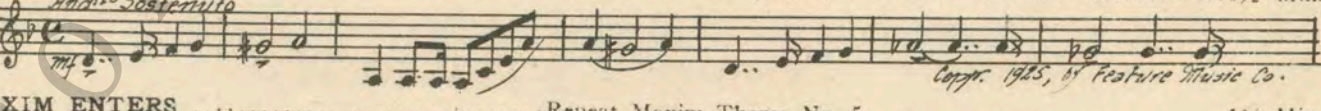


- 7 (Action) ADMIRER ENTERS ROOM Rhapsody Appassionata (Ketelbey) 3 Min.

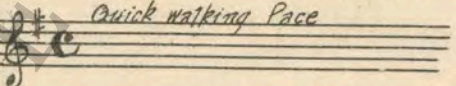


NOTE: Catch shot effect as he leaves and Isabella starts to polish nails.

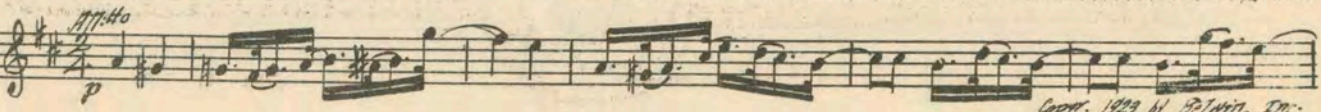
- 8 (Action) STRONG SPEAKS TO ISABELLA Dramatic Prelude (Schad) 1½ Min.



- 9 (Action) MAXIM ENTERS Repeat Maxim Theme No. 5 1¾ Min.



- 10 (Action) ISABELLA ON DIVAN—SERVANTS AND MAIDS SERVING HER Little Flower Garden (Breil) 1¼ Min.



11 (Title) AND IN THE NEAREST WINE SHOP.....Toreador Humoresque (Laké).....2 Min

Musical notation for item 11, featuring a treble clef, key signature of one sharp (F#), and tempo marking *Mod: to*. Copyright 1918, by Carl Fischer.

12 (Title) MISSY SAY YOU COME QUICK.....The Cricket's Dance (Ring-Hager).....2 Min.

Musical notation for item 12, featuring a treble clef, key signature of one sharp (F#), and tempo marking *Mod: to con moto*. Copyright 1923, by Forster Music Pub.

13 (Title) THE PRESTIGE OF DINING ON THE TERRACELove's Serenade "May Days and Grey Days" (Elliott).....1 Min.

Musical notation for item 13, featuring a treble clef, key signature of one sharp (F#), and tempo marking *And: te*. Copyright 1916, by Harris, Inc.

14 (Action) FLASH-BACK TO UNCLE.....Repeat Uncle Theme No. 11.....3/4 Min.

Musical notation for item 14, featuring a treble clef, key signature of one sharp (F#), and tempo marking *Mod: to*.

15 (Action) FLASH-BACK TO TERRACE.....Ashes of Roses (Arnold).....5 Min.

Musical notation for item 15, featuring a treble clef, key signature of one sharp (F#), and tempo marking *Tempo di Valse*. Copyright 1912, by Bosworth & Co.

16 (Action) ISABELLA ASKS FOR LIGHT.....Intermezzo "Suite Melodique" (Friml).....1 1/2 Min.

Musical notation for item 16, featuring a treble clef, key signature of one sharp (F#), and tempo marking *1st a animoso*. Copyright 1916, by G. Schirmer.

17 (Title) HAPPY IN THE THOUGHT.....Babilage (Gillet)1 3/4 Min.

Musical notation for item 17, featuring a treble clef, key signature of one sharp (F#), and tempo marking *Al: to*. Copyright by Carl Fischer.

18 (Title) ON HER ARRIVAL IN PARIS.....The Woodland Fairy "Northern Impressions" (Grieg).....1 Min.

Musical notation for item 18, featuring a treble clef, key signature of one sharp (F#), and tempo marking *Al: to con grazia*. Copyright 1925, by Carl Fischer.

19 (Action) UNCLE ENTERS CAFE.....Repeat Uncle Theme No. 11.....1 1/4 Min.

Musical notation for item 19, featuring a treble clef, key signature of one sharp (F#), and tempo marking *Mod: to*.

20 (Action) ISABELLA POSING FOR ARTIST.....Le Chemin du Coeur (Lincke).....1 1/2 Min.

Musical notation for item 20, featuring a treble clef, key signature of one sharp (F#), and tempo marking *Al: to*.

21 (Title) WHAT ARE YOU AFRAID OF.....LOVE THEME: Magic Love (Bradford).....3 1/4 Min.

Musical notation for item 21, featuring a treble clef, key signature of two flats (Bb), and tempo marking *Valse lento*.

Musical notation for item 21, featuring a treble clef, key signature of two flats (Bb), and tempo marking *Valse lento*. Copyright 1916, by Sam Fox Pub. Co.

22 (Action) ARTIST RETURNS WITH WINE BOTTLES...La Presentation (Gabriel Marie).....2 1/4 Min.

Musical notation for item 22, featuring a treble clef, key signature of one sharp (F#), and tempo marking *And: no*.

23 (Action) ISABELLA IN BOUDOIR--REXFORD ENTERSRepeat Love Theme No. 21.....2 1/2 Min

Musical notation for item 23, featuring a treble clef, key signature of two flats (Bb), and tempo marking *Valse lento*.

24 (Title) ARE YOU SURE, GERALD, THAT YOU LOVE MEAt Dawning (Cadman)1 1/2 Min.

Musical notation for item 24, featuring a treble clef, key signature of two flats (Bb), and tempo marking *Mod: to*. Copyright 1919, by Oliver Ditson Comp.

- 25 (Title) LOVE HAS NO NEED OF.....Prelude (Jarnfelt)2¼ Min.
All.^o quasi All.^o Ho
Copy. 1912, by G. Schirmer
- 26 (Title) ALL FOR LOVE.....Repeat Love Theme No. 21.....1¾ Min.
Valse lento
- 27 (Action) MAXIM AT TABLE.....Pulcinello (Aletter)3 Min.
All.^o Ho
Copy. 1912, by G. Schirmer
- 23 (Title) A MOTHER'S LOVE OVERCOMES PRIDE....Souvenir de Tendresse (Ketelbey).....1½ Min.
And.^{te} Mod.^{to}
Copy. 1919, by Bosworth & Co.
- 29 (Action) STRONG ENTERSAppassionato No. 2 (Axt).....3 Min.
All.^o opus 8va
Copy. 1922, by Robbins-Engel, Inc.
- 30 (Action) VISION OF HER PROMISE TO MOTHER....Romance "Suite Romantique" (Ketelbey).....2½ Min.
Molto espress
Copy. 1912, by Bosworth & Co.
- 31 (Action) INSERT—MARRIAGE ANNOUNCEMENTTrouble extreme (Gabriel Marie).....1¾ Min.
Molto All.^o
- 32 (Action) REXFORD SPEAKS TO MOTHER.....Le Songe de L'Exile (Gabriel Marie).....1½ Min.
Lento
- 33 (Action) FLASH-BACK TO ISABELLA.....All Alone (Berlin).....1 Min.
Fox-trot
Copy. 1924, by Irving Berlin
- 34 (Title) PEACEGruesome Tales No. 1 (Rapee-Axt).....2½ Min.
Largo Mist.
Copy. 1913, by Robbins-Engel
- 35 (Action) REXFORD ENTERSPoeme d'Espoir (Gabriel Marie).....3½ Min.
Poco Lento
Copy. 1924, L. Philippo
- 36 (Title) FOOLISH GIRLRepeat Love Theme No. 21.....¾ Min.
Valse lento
- 37 (Action) UNCLE, NEW WIFE AND KIDS ENTER.....Repeat Uncle Theme No. 11.....1¼ Min.
Mod.^{to}
- 38 (Action) MAID OPENS DOOR—SEES LGVERS.....Repeat Love Theme No. 21.....1 Min.

THE END

Complete Orchestrations and single parts of all compositions contained herein can be purchased from CAMEO MUSIC SERVICE CORPORATION, 112-118 West 44th Street, New York City

95:1877:1