

M. J. MINTZ (PATENT)  
JULY 31, 1923.

Joseph P. Kennedy  
presents  
**PAULINE FREDERICK**  
in  
**“HER HONOR THE GOVERNOR”**

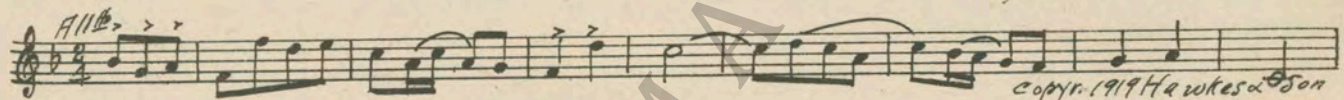
Directed by Chet Withey  
Music compiled by James C. Bradford  
Distributed by

Film Booking Offices of America, Inc.

- 1 AT SCREENING ..... There'll Be a Hot Time ..... 2 Min.



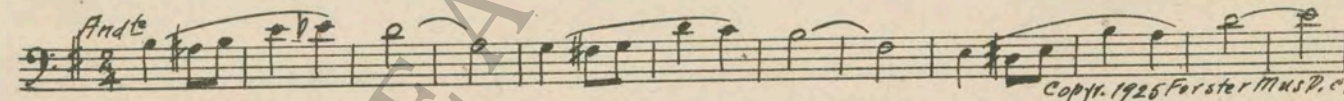
- 2 (Title) LEMUEL SPIVEY ..... NOTE: Play "PP" for address by the Governor. A Spring Day (Haines) ..... ½ Min.



- 3 (Action) THE GOVERNOR APPEARS ON PORCH..... Bits of Old Time Hits No. 2 (Reeg) ..... 3½ Min.



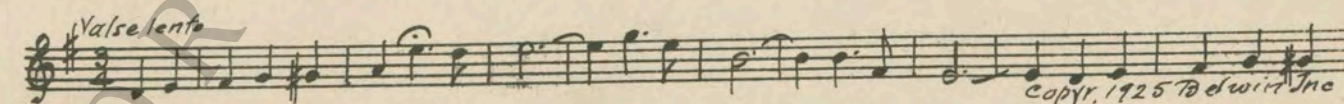
- 4 (Action) ADELE ENTERS HOME ..... Sympathy (Kav) ..... 1 Min.



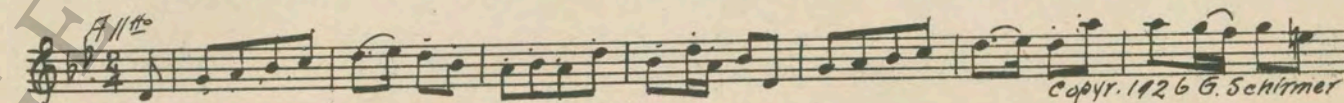
- 5 (Action) ADELE SEES LOVERS IN GARDEN..... Love Is a Story That's Old (Herbert) ..... 1¼ Min.



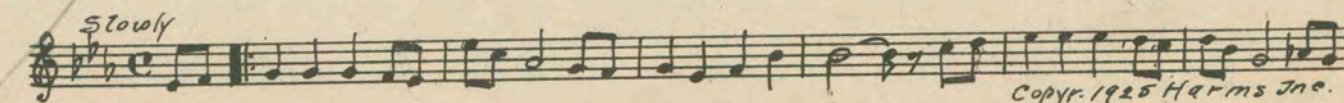
- 6 (Title) THE CITY ATHLETIC CLUB ..... Valse Dramatic (Rapee) ..... 1¾ Min.



- 7 (Action) ADELE DUSTING TABLE ..... Celebrated Canzonetta (Mendelsshon) ..... 2 Min.



- 8 (Title) ISN'T THIS A DREAM ..... THEME: Just a Cottage Small (Hanley) ..... ¾ Min.



- 9 (Title) THE SENATE COMMITTEE .....Bagatelle No. 1 (Dvorak) .....1¼ Min.  
*Allo*  

 Copyr. 1926 Emil Ascher
- 10 (Title) IT'S NOT GOING THROUGH .....Romance (Reinecke) .....1¼ Min.  
*Andte sost.*  

 Copyr. 1917 Carl Fischer
- 11 (Title) POLITICS .....Repeat No. 9 "Bagatelle No. 1" .....1¾ Min.  
*Marcia*
- 12 (Title) SAY LEM, I COULD USE ANOTHER.....In Merry Mood (Axt) .....1 Min.  
*Allo schifz*  

 Copyr. 1925 Robbins Engel
- 13 (Action) ADELE APPEAR S FROM CAR HOLDING  
 DOG .....Meditation (Baron) .....¾ Min.  
*Andte cantabile*  

 Copyr. 1924 Belwin Inc
- 14 (Title) NOW LEM, WHAT WERE YOU SAYING.....Junella (Kahn) .....½ Min.  
*Modto*  

 Copyr. 1924 Feature Mus. Co
- 15 (Title) AFTER A WEEK'S MYSTERIOUS .....Misterioso Fantastique (Berge) .....½ Min.  
*Modto*  

 Copyr. 1925 Jungnickel
- 16 (Title) ON THE EVE OF ROBERT FENWAY'S  
 MARRIAGE .....Whimsical Charms (Fresco) .....¾ Min.  
*Valse lento*  

 Copyr. 1925 Belwin Inc
- 17 (Action) WAITER REMOVES COVER OF CENTER-  
 PIECE .....Repeat Theme No. 8 .....1¾ Min.  
*slowly*
- 18 (Action) FOLEY AND WOMAN ENTER .....Preludio (Cordova) .....5 Min.  
*Andte sost.*  

 Copyr. 1926 E. Dispensa
- 19 (Action) INSERT-WEDDING ANNOUNCEMENT .....Smilin' Through (Penn) .....½ Min.  
*slowly*  

 Copyr. Witmark & Sons
- 20 (Action) CLUB ROOMS .....Repeat No. 15 "Misterioso Fantastique" .....1 Min.  
*Modto*

21 (Action) FLASH-BACK TO ADELE ..... Cossack Lullaby (Jiranek) ..... ½ Min.

*Mod<sup>to</sup>*  
A single staff of music in treble clef, 3/4 time signature, with a key signature of one flat. The melody is a simple, lullaby-like tune.  
Copyr. G. Schirmer

22 (Action) FLASH-BACK TO CLUB ..... Obsession (Fosse) ..... 2 Min.

*Andte*  
A single staff of music in treble clef, 4/4 time signature, with a key signature of one flat. The melody is slow and expressive.  
Copyr. J. Yves

23 (Action) ROBERT ENTERS CLUB ..... Appassionato No. 1 (Rapee-Axt) ..... 2¼ Min.

*All<sup>o</sup> agitato*  
A single staff of music in treble clef, 3/4 time signature, with a key signature of three flats. The melody is fast and dramatic.  
Copyr. 1923 Robbins Engel

24 (Title) HANG UP, PLEASE ..... Omens (Schad) ..... 1 Min.

*All<sup>o</sup>*  
A single staff of music in treble clef, 4/4 time signature, with a key signature of one sharp. The melody is lively and rhythmic.  
Copyr. 1925 Geo. H. Sanders

25 (Action) ROBERT ENTERS HOME—MET BY MOTHER ..... Romance (Ketelbey) ..... 2¾ Min.

*Andte affettuoso*  
A single staff of music in treble clef, 3/4 time signature, with a key signature of one flat. The melody is slow and romantic.  
Copyr. 1924 Bosworth

26 (Title) DAYS OF WAITING ..... Pleading Love Theme (Bradford) ..... 1 Min.

*Andte*  
A single staff of music in treble clef, 3/4 time signature, with a key signature of one flat. The melody is slow and pleading.  
Copyr. 1924 Belwin Inc

27 (Action) SWEETHEART LOOKING AT MINIATURE COTTAGE ..... Repeat Theme No. 8 (Last 4 measures only) ..... ¼ Min.

*Slowly*  
A single staff of music in treble clef, 4/4 time signature, with a key signature of one flat. The melody is very slow.  
Copyr. 1924 Belwin Inc

28 (Title) TAKING ADVANTAGE OF ..... Tragic Andante (Savino) ..... ½ Min.

*Andte*  
A single staff of music in treble clef, 4/4 time signature, with a key signature of three flats. The melody is slow and tragic.  
Copyr. 1923 G. Schirmer

29 (Title) WITH JURY AT LAST IMPANELLED ..... Awakening of Spring (Bach) ..... 2 Min.

*Andte*  
A single staff of music in treble clef, 4/4 time signature, with a key signature of one flat. The melody is slow and awakening.  
Publ. Em. Ascher

30 (Title) THE FIRST WITNESS ..... L'Angoisse aventure (Gabriel Marie) ..... 4½ Min.

*Andte sost.*  
A single staff of music in treble clef, 3/4 time signature, with a key signature of one flat. The melody is slow and anguished.  
Copyr. 1923 Salabert

31 (Title) IT IS THE INTENT ..... Melody of Peace (Martin) ..... 1 Min.

*Andte*  
A single staff of music in treble clef, 3/4 time signature, with a key signature of one flat. The melody is slow and peaceful.  
Copyr. 1920 Carl Fischer

32 (Title) WHY DIDN'T YOU TELL US ABOUT THIS CUE ..... Romeo's Farewell to Juliet (Baron) ..... 1¾ Min.

*Andte mod<sup>to</sup>*  
A single staff of music in treble clef, 3/4 time signature, with a key signature of one flat. The melody is slow and mod<sup>to</sup>.  
Copyr. 1923 Belwin Inc.

33 (Title) A FEW DAYS LATER ..... La Fille du Contrebandier (Mouton) ..... 4¼ Min.

*And<sup>te</sup> maestoso*

Copyr. 1925 J. Yves

34 (Title) HOURS OF GRILLING ..... In Palude No. 2 (Culotta) ..... 1 Min.

*Poco mosso febbrile*

Copyr. 1925 G. Dispenza

35 (Action) SNIPE IN ROOM READING PAPER..... Repeat No. 15 "Misterioso Fantastique" ..... ½ Min.

*Mod<sup>to</sup>*

36 (Title) WHEN ADELE FENWAY ..... Repeat No. 34 "In Palude No. 2" ..... 1¼ Min.

*Poco mosso febbrile*

37 (Title) WE, THE JURY, FIND ..... Pathetique Symphony No. 6 (Tschaiakowsky) ..... 2 Min.

*And<sup>te</sup> giusto*

Copyr. 1916 Hawkes & Sons

38 (Title) THIS COURT IS ADJOURNED ..... Dear Little Boy of Mine (Ball) ..... ½ Min.

*And<sup>in</sup>o*

Copyr. Witmark & Sons

39 (Action) FLASH-BACK TO SNIPE ..... Repeat No. 15 "Misterioso Fantastique" ..... ½ Min.

*Mod<sup>to</sup>*

40 (Action) OFFICERS AT DOOR ..... Dramatic Scene (May) ..... 3 Min.

*And<sup>te</sup>*

41 (Title) YOU AND I HAVE A LITTLE ARGUMENT TO SETTLE ..... Anger Motive (Kilenyi) ..... 1 Min.

*All<sup>o</sup> con moto*

Copyr. 1925 Belwin Inc

42 (Title) WITH HONOR AND POSITION ..... Repeat Theme No. 8 ..... 1½ Min.

*Sto wly*

Printed in U. S. A.

THE END

Complete orchestrations and single piano parts of each separate number contained hereon, can be purchased from CAMEO MUSIC SERVICE CORPORATION, 315-317 West 47th Street, New York City.

95:1884:1

70