



NORMA SHEARER

in

THE ACTRESS

with
Ralph Forbes and Owen Moore

Adapted from the play
"Trelawney of the Wells"

by

Sir Arthur Wing Pinero

Screen play by Albert Lewin and Richard Schayer

DIRECTED BY SIDNEY FRANKLIN

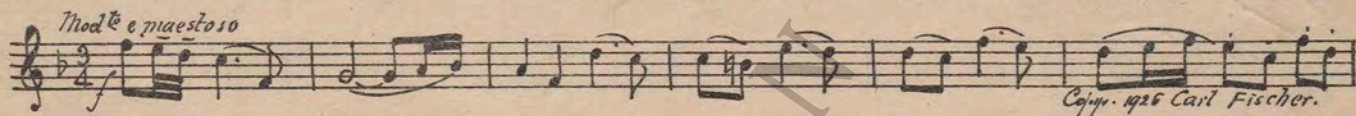
Compiled by Ernst Luz

A METRO-GOLDWYN-MAYER PICTURE

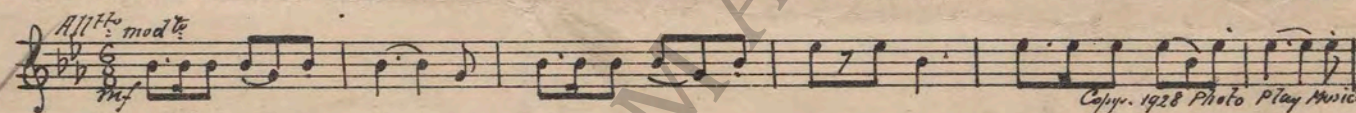
Length of film 8 reels (6940 feet)

Maximum projection time 1 hour, 22 minutes

- 1 AT SCREENING Suite Ancienne No. 1 (Hadley) 1½ Min.



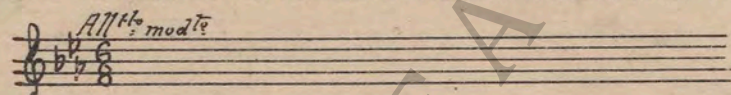
- 2 (Title) THE SUN WAS SHINING IN LONDON Incid. Symphony No. 42 (Damaur) 1¼ Min.



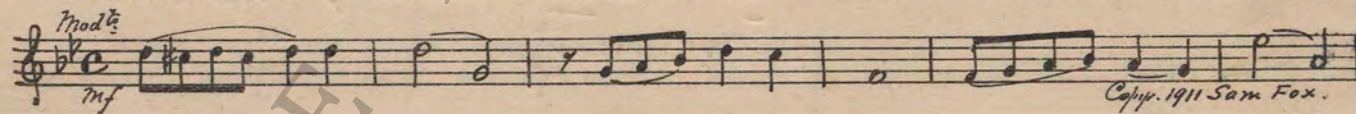
- 3 (Action) MAN ENTERS ROOM AFTER TITLE:
"ROSE, ETC." Minuet In G (Beethoven) 1½ Min.



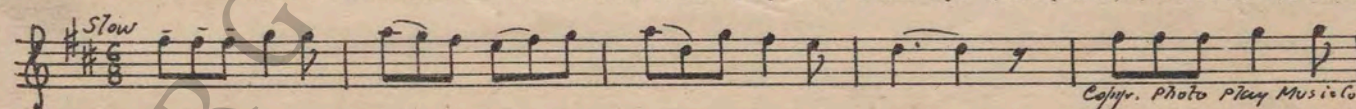
- 4 (Action) COUPLE GOING DOWN STAIRWAY Repeat No. 2 "Incid. Symphony No. 42" 1 Min.



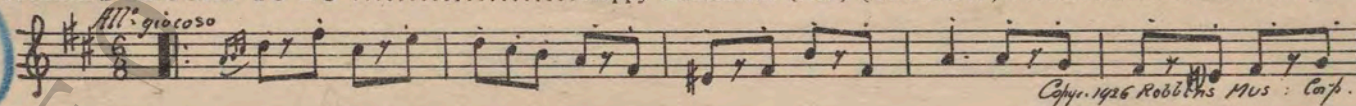
- 5 (Action) STOP WITH CRASH AT ACCIDENT
TO COACH The Bee and the Floweret (Zamecnik) 1 Min.



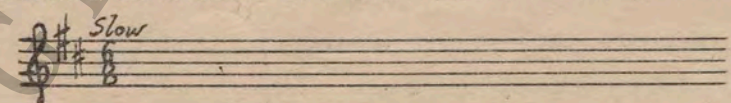
- 6 (Action) FORBES LEFT ALONE ON SCREEN Drink to Me Only With Thine Eyes (Marquardt) (WHITE) .. ½ Min.



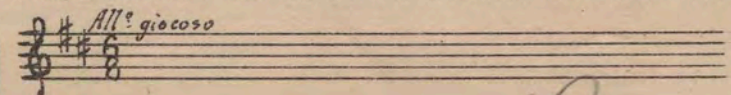
- 7 (Title) THERE'S NAUGHT TO DO Happy Bohemians (Axt) (YELLOW) 1 Min.



- 8 (Title) I WANT TO THANK YOU Repeat No. 6 (WHITE) 1 Min.



- 9 (Title) WHAT DO YOU DO Repeat No. 7 (YELLOW) 1 Min.



1 Arthur Gower Lived

10 (Title) ARTHUR GOWER LIVED Promenade (Rapee-Axt) 2 Min.

Musical notation for item 10, featuring a treble clef, key signature of one sharp (F#), and a 2/4 time signature. The tempo is marked *All^{to}* and the dynamics *mf*. The piece is titled "Promenade (Rapee-Axt)". Copyright 1923 Robbins Music Corp.

11 (Title) I DON'T BLAME YOU Repeat No. 7 (YELLOW) 1 1/2 Min.

Musical notation for item 11, featuring a treble clef, key signature of one sharp (F#), and a 2/4 time signature. The tempo is marked *All^o giocoso*. The piece is titled "I DON'T BLAME YOU".

12 (Title) CLEAR THE STAGE Ballet Egyptian No. 1 (Luigini) 1 1/4 Min.

Musical notation for item 12, featuring a treble clef, key signature of one flat (Bb), and a 2/4 time signature. The tempo is marked *All^o*. The piece is titled "CLEAR THE STAGE". Copyright 1912 G. Schirmer.

13 (Action) PRISONER BROUGHT ON STAGE Continue No. 12 3/4 Min.

Musical notation for item 13, featuring a treble clef, key signature of one flat (Bb), and a 2/4 time signature. The tempo is marked *All^o*. The piece is titled "PRISONER BROUGHT ON STAGE".

14 (Action) GIRL LYING ON STAGE Ballet Egyptian No. 2 (Luigini) 3/4 Min.

Musical notation for item 14, featuring a treble clef, key signature of one sharp (F#), and a 2/4 time signature. The tempo is marked *All^{to}*. The piece is titled "GIRL LYING ON STAGE". Copyright 1912 G. Schirmer.

15 (Action) GIRL AGAIN LYING ON STAGE Ballet Egyptian No. 3 (Luigini) 1/4 Min.

Musical notation for item 15, featuring a treble clef, key signature of one sharp (F#), and a common time signature (C). The tempo is marked *And^{te} sost.*. The piece is titled "GIRL AGAIN LYING ON STAGE". Copyright 1912 G. Schirmer.

16 (Action) LETTER ON SCREEN Ave Aprile (Culotta) 1 1/2 Min.

Musical notation for item 16, featuring a treble clef, key signature of one sharp (F#), and a common time signature (C). The tempo is marked *Mod^{to} con moto*. The piece is titled "LETTER ON SCREEN". Cinemusic Service.

17 (Title) IT'S MY OWN FAULT Repeat No. 7 (YELLOW) 1 3/4 Min.

18 (Title) I WOULD CONSIDER IT Repeat No. 3 "Minuet In C" 3/4 Min.

19 (Action) LOVERS IN CARRIAGE Allegro No. 1 (Minot) 3/4 Min.

Musical notation for item 19, featuring a treble clef, key signature of one flat (Bb), and a 2/4 time signature. The tempo is marked *All^o*. The piece is titled "LOVERS IN CARRIAGE". Copyright 1915 G. Schirmer.

20 (Action) LOVERS RUN OUT OF BEER GARDEN Repeat No. 6 (WHITE) 1 1/4 Min.

21 (Action) GIRL KISSES LOVER AT DOOR Repeat No. 19 "Allegro No. 1" 1/4 Min.

22 (Action) GIRL SITS DOWN ON STAIRWAY Repeat No. 6 (WHITE) 1 Min.

23 (Title) ON THE STAGE Repeat No. 3 "Minuet In C" 1 1/4 Min.

24 (Title) AND NOW I AM SURE Memories (Blossom) 1 1/4 Min.

Musical notation for item 24, featuring a treble clef, key signature of one sharp (F#), and a common time signature (C). The tempo is marked *And^{te} mod^{to}*. The piece is titled "AND NOW I AM SURE". Copyright 1926 Robbins Music Corp.

25 (Title) AND NOW A FEW WORDS Repeat No. 7 (YELLOW) 1 Min.

26 (Title) MY ONLY WISH IS Dramatic Adagio (Berge) (RED) 1 Min.

Musical notation for item 26, featuring a treble clef, key signature of one flat (Bb), and a common time signature (C). The tempo is marked *Adagio*. The piece is titled "MY ONLY WISH IS". Copyright 1925 Ross Jungnickel.

27 (Action) PLAY SIXTEEN BARS AND SEGUE Scene d'Amour (Baron) 2 Min.

Musical notation for item 27, featuring a treble clef, key signature of one flat (Bb), and a 2/4 time signature. The tempo is marked *Adagio cantabile*. The piece is titled "PLAY SIXTEEN BARS AND SEGUE". Copyright 1927 Belwin Inc.

28 (Title) AT CAVENDISH SQUARE Gavotte and Musette (Raff) 2 Min.

Musical notation for item 28, featuring a treble clef, key signature of one flat (Bb), and a 2/4 time signature. The tempo is marked *All^o vivo*. The piece is titled "AT CAVENDISH SQUARE". Copyright 1912 G. Schirmer.

29 (Title) I CAN'T EVEN BLOW (ANTICIPATE ORGAN GRINDER) O Sole Mio! (di Capua) ½ Min.

Valse

 Copyr. 1931 Carl Fischer.

30 (Action) GIRL FALLS ON KNEES Repeat No. 26 (RED) ¾ Min.

Adagio

31 (Title) WHY DO YOU SIT UPON THE FLOOR? Minuet from G Minor Symphony (Mozart) 2½ Min.

All^o

 Copyr. 1920 G. Schirmer.

32 (Action) GIRL SNEEZES SECOND TIME Scherzo Silhouette (Marquardt) ¾ Min.

All^o

 Copyr. 1928 Music Buyers Corp.

33 (Title) DO WE PLAY WHIST Appassionato (Norton) 1 Min.

And^{te}

 Copyr. Walter Jacobs.

34 (Action) GIRL SITS DOWN AT PIANO Repeat No. 6 (WHITE) ¾ Min.
 NOTE: Play Piano alone—burlesque to screen action.

35 (Action) LOVERS AT PIANO STOP SINGING Repeat No. 26 (RED) 1 Min.

36 (Title) YOU MUST GO Repeat No. 6 (WHITE) 1¼ Min.

37 (Action) GIRL BEGINS TO CRY AFTER LOVER EXITS Incid. Miniature No. 2 (Schertzinger) (A) ½ Min.

And^{te}

 Copyr. 1924 Photo Play Music

38 (Action) BUTLER SPEAKING TO GIRL ON SOFA Repeat No. 7 (YELLOW) 1½ Min.

All^o giocoso

39 (Title) THEY WOULD COME IN The Chiffon Frock (Carr) 2¼ Min.

Mod^{to}

 Edw. B. Marks.

40 (Title) AVONIA DEAR The Afterglow (Huerter) 1 Min.

Mod^{to}

 Copyr. 1924 G. Schirmer.

41 (Action) TWO MEN AT JUG OF WINE Agitato No. 5 (Axt) ¼ Min.

Agitato

 Copyr. 1926 Robbins Music Corp.

42 (Action) STOP SHORT AS DOOR BEGINS TO OPEN.. Repeat No. 26 (RED) 1¼ Min.

Adagio

43 (Title) BE GONE Broken Vows (Kempinski) ¾ Min.

And^{te}

 Copyr. 1927 Photo Play Music Co.

D-girl saying goodbye to Stage Manager

44 (Action) GIRL SAYING GOOD-BYE TO STAGE MANAGER Heavy Desc. Agitato No. 1 (Luz) 1 Min.

All.^o mosso

Copyright 1917 Photo Play Music.

45 (Title) ROSE, YOU CAN'T GO Repeat No. 6 (WHITE) 1¼ Min.

Slow

46 (Title) ROSE WENT BACK In Minor Mode No. 3 (DeKoven) 1¼ Min.

And.^{te}
mf

Copyright 1924 John Ethur-sh.

47 (Action) TRELAWNEY ENTERS ROOM Repeat No. 6 (WHITE) ½ Min.
 48 (Action) GIRL WALKS FROM WINDOW Repeat No. 46 "In Minor Mode No. 3" 1½ Min.
 49 (Action) BILL COLLECTOR Repeat No. 26 (RED) 1½ Min.
 50 (Title) HAVE WE NO CHAIRS One Fleeting Hour (Lee) 2¾ Min.

Mod.^{te}

Copyright 1915 Sam Fox.

51 (Title) AS FOR ARTHUR Lament (Herrmann) 2¾ Min.

Lento

Copyright 1926 Heinrichshofen's

52 (Title) YOU WANT TO HELP HER Perpetuum Mobile (Rapee) ¾ Min.

All.^o molto

Copyright 1927 Belwin Inc.

53 (Action) FADE-OUT AS CARRIAGE DRIVES OFF Gavotte In G (Gluck) 1 Min.

All.^o grazioso

Copyright 1926 Oliver Ditson Co

54 (Title) TOM, I'M AFRAID Serenade d'Amour (V. Blon) 1¼ Min.

Mod.^{te}

Copyright Carl Fischer.

55 (Title) UNTIL OUR LEADING MAN Repeat No. 3 "Minuet In G" 1 Min.

All.^o

56 (Action) MAN IN BOX STANDS UP Repeat No. 6 (WHITE) 2 Min.

Slow

THE END

Proper orchestral rest period is Nos. 27 to 41 inclusive.

NOTE: The repetition of numbers in this cue sheet is simplified by the use of the "LUZ" SYMPHONIC COLOR GUIDE, sold by Music Buyers Corporation, 1520 Broadway, New York City. The color suggested for repetition of numbers designates the Mood or Emotion, and is used as a code for such repetitions. Country of Origin, U. S. A.

Complete orchestrations and single piano parts of each separate number contained hereon, can be purchased from CAMEO MUSIC SERVICE CORPORATION, 315-317 WEST 47TH STREET, NEW YORK CITY.

95:1571:1