

Thursday April 28

Thematic Music



Cue Sheet



Adolph Zukor and Jesse L. Lasky present

# FLORENCE VIDOR

in

## "AFRAID TO LOVE"

with

Clive Brook, Jocelyn Lee and Norman Trevor

Directed by Edward H. Griffith

Based on "The Marriage of Kitty" by Fred de Gresac and F. de Croisset

Adaptation by Doris Anderson

Screen play by Doris Anderson and Joseph Jackson

Compiled by James C. Bradford

Footage 6199 feet

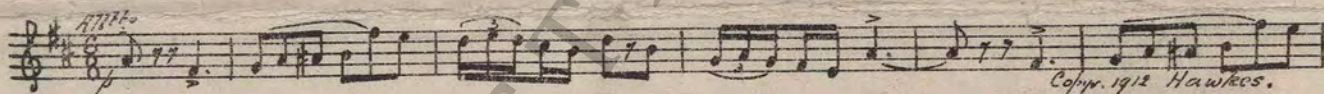
One Theme

### A Paramount Picture

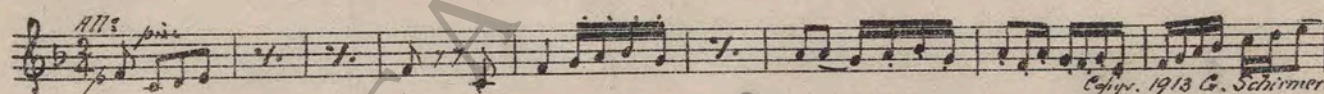
- 1. AT SCREENING ..... Penelope's Garden (Ancliffe) ..... 3/4 Min.



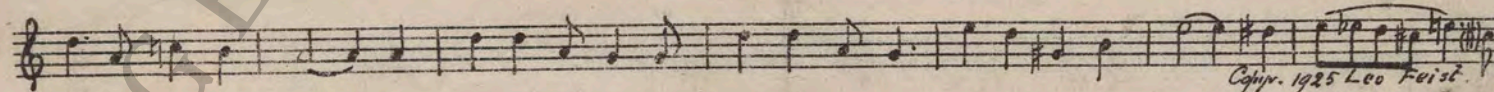
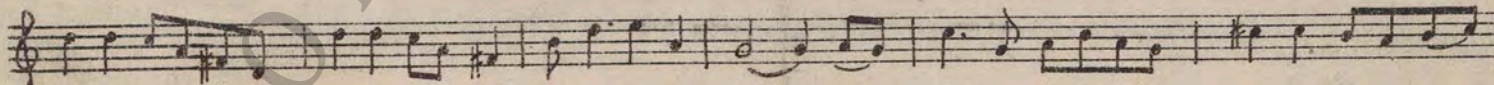
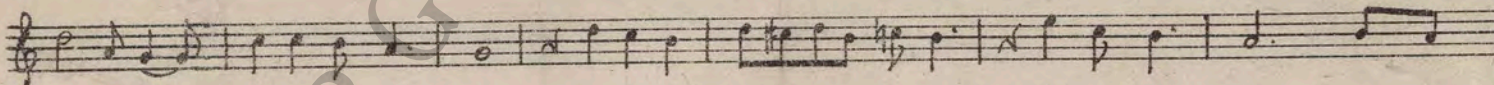
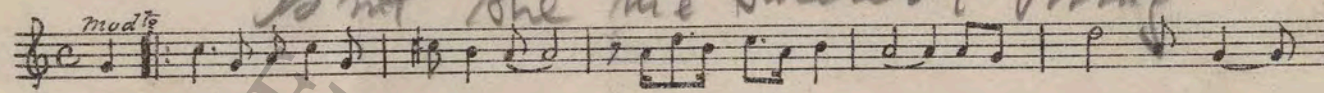
- 2. (Action) COUPLE AT DOOR ..... Love in Arcady (Wood) ..... 2 Min.



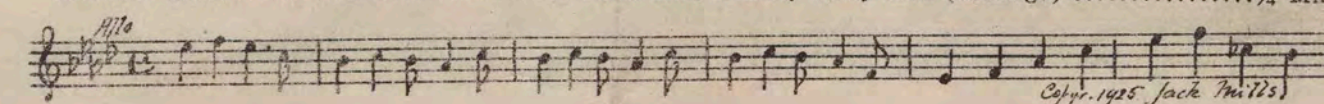
- 3. (Action) SIR REGINALD ENTERS ..... Prelude (Jarnfelt) ..... 2 1/4 Min.



- 4. (Action) HELEN ENTERS OFFICE ..... Flamin' Mamie (Rose) ..... 2 1/4 Min.



- 5. (Title) NOTE: Play rather quietly through entire sequence.  
SPLendid, HE MARRIES HER AND I  
MARRY HIM ..... Everything is Hotsy Totsy Now (McHugh) ..... 3/4 Min.



6. (Title) I'VE FOUND A JOB FOR YOU KITTY.....Moto Perpetuo (Byng) .....2½ Min.

*Salvo*  
 Musical notation for 'I'VE FOUND A JOB FOR YOU KITTY' in treble clef, 2/4 time, marked *All<sup>o</sup>*. The melody is simple and rhythmic. *Copyr. 1926 Hawkes.*

7. (Action) KITTY ENTERS ROOM AND MEETS REGGIE AND HELEN ..... You May Mean the Whole World to Somebody Else (Hummel) .....3 Min.

*What good is Goodmorning*  
 Musical notation for 'KITTY ENTERS ROOM AND MEETS REGGIE AND HELEN' in treble clef, 2/4 time, marked *mod<sup>to</sup>*. The melody is simple and rhythmic. *Copyr. 1925 Konkas Pub.*

8. (Action) INSERT—MARRIAGE PERMIT ..... Ain't We Got Fun (Whiting) .....1½ Min.

*mod<sup>to</sup>*  
 Musical notation for 'INSERT—MARRIAGE PERMIT' in treble clef, 2/4 time, marked *mod<sup>to</sup>*. The melody is simple and rhythmic. *Copyr. 1921 J. H. Remick.*

9. (Title) LUGGAGE FOR LADY BELSIZE ..... Where'd You Get Those Eyes? (Donaldson).....1½ Min.

*mod<sup>to</sup>*  
 Musical notation for 'LUGGAGE FOR LADY BELSIZE' in treble clef, 2/4 time, marked *mod<sup>to</sup>*. The melody is simple and rhythmic. *Copyr. 1926 Leo Feist.*

10. (Action) FRIENDS-TO SEE THEM OFF ..... Jolly Trotters (Gillet) .....1 Min.

*All<sup>o</sup> ma non troppo*  
*In Chevalant*  
 Musical notation for 'FRIENDS-TO SEE THEM OFF' in treble clef, 2/4 time, marked *All<sup>o</sup> ma non troppo*. The melody is simple and rhythmic. *Copyr. 1926 Manus. Music.*

11. (Title) PARIS ..... 2nd Arabesque (Debussy).....1¼ Min.

*All<sup>o</sup> scherzando*  
*Demoiselle Chic*  
 Musical notation for 'PARIS' in treble clef, 2/4 time, marked *All<sup>o</sup> scherzando*. The melody is simple and rhythmic. *Copyr. Durand. & Co.*

12. (Action) INSERT—TELEGRAM ..... Misterioso Burlesque (Savino) .....1 Min.

*All<sup>o</sup> mod<sup>to</sup>*  
 Musical notation for 'INSERT—TELEGRAM' in treble clef, 2/4 time, marked *All<sup>o</sup> mod<sup>to</sup>*. The melody is simple and rhythmic. *Copyr. 1924 Robbins - Engel.*

13. (Action) KITTY ALONE IN ROOM PLAYING CHESS... Coquette (Arensky) .....1 Min.

*All<sup>o</sup>*  
*Love in My Garden*  
 Musical notation for 'KITTY ALONE IN ROOM PLAYING CHESS' in treble clef, 2/4 time, marked *All<sup>o</sup>*. The melody is simple and rhythmic. *Copyr. 1912 G. Schirmer.*

14. (Action) WINDOW CLEANER OUTSIDE ROOM ..... Elopement (Carozzini) .....1½ Min.

*Vivace*  
*Fuga*  
 Musical notation for 'WINDOW CLEANER OUTSIDE ROOM' in treble clef, 2/4 time, marked *Vivace*. The melody is simple and rhythmic. *Copyr. 1926 Sonnemann.*

15. (Action) EMBRACE—THEY LOOK INTO EACH OTHERS EYES .....THEME: Adorable (Wynburn) .....¾ Min.

*mod<sup>to</sup>*  
 Musical notation for 'EMBRACE—THEY LOOK INTO EACH OTHERS EYES' in treble clef, 2/4 time, marked *mod<sup>to</sup>*. The melody is simple and rhythmic. *Copyr. 1926 Leo Feist.*

Musical notation line, treble clef, 2/4 time.

Musical notation line, treble clef, 2/4 time.

Musical notation line, treble clef, 2/4 time. *Copyr. 1926 Leo Feist.*

16. (Action) HELEN ENTERS ROOM.....The Chatterbox (Sanders) .....1¼ Min.

Musical notation for item 16, featuring a treble clef, a key signature of one sharp (F#), and a 2/4 time signature. The melody is written on a single staff. Copyright information: *Copyr. 1927 Geo. H. Sanders*

17. (Title) AN HOUR LATER.....*Interrupted Rendezvous* Patrouille Francaise (Hosmer) .....1½ Min.

Musical notation for item 17, featuring a treble clef, a key signature of one flat (Bb), and a 2/4 time signature. The melody is written on a single staff. Copyright information: *Copyr. 1917 The Comedy Beltway*

18. (Title) EIGHT O'CLOCK .....*La Poeme* La Confession (Morgan) .....2 Min.

Musical notation for item 18, featuring a treble clef, a key signature of one flat (Bb), and a 3/4 time signature. The melody is written on a single staff. Copyright information: *Copyr. 1921 E. B. Marks*

19. (Title) THE TRUNK WITH MY CLOTHES .....*Dance Caprice* Allegretto (Grieg) .....3 Min.

Musical notation for item 19, featuring a treble clef, a key signature of one sharp (F#), and a 2/4 time signature. The melody is written on a single staff. Copyright information: *Copyr. 1918 G. Schirmer*

20. (Action) KITTY APPEARS BEFORE REGGIE IN BLACK GOWN .....My Baby Knows How (Davis) .....¾ Min.

Musical notation for item 20, featuring a treble clef, a key signature of one sharp (F#), and a 2/4 time signature. The melody is written on a single staff. Copyright information: *Copyr. 1926 I. Berlin*

21. (Action) DINING ROOM .....Babilage (Gillet) .....1¼ Min.

Musical notation for item 21, featuring a treble clef, a key signature of one sharp (F#), and a 2/4 time signature. The melody is written on a single staff. Copyright information: *Copyr. 1889 C. Fischer*

22. (Title) AFTER ANOTHER DAY .....*Little Billiken* Queer Antics (Zamecnik) .....2 Min.

Musical notation for item 22, featuring a treble clef, a key signature of one flat (Bb), and a 6/8 time signature. The melody is written on a single staff. Copyright information: *Copyr. 1927 Sam Fox*

23. (Action) MAID AT DOOR .....*Pensee D'amour* Lianesque (Gabriel Marie) .....1¼ Min.

Musical notation for item 23, featuring a treble clef, a key signature of one sharp (F#), and a 3/4 time signature. The melody is written on a single staff. Copyright information: *Copyr. 1924 Chapelier*

24. (Action) HELEN APPEARS IN HALL .....*Intermezzo* Animal Cartoonix No. 2 (Aborn) .....2½ Min.

Musical notation for item 24, featuring a treble clef, a key signature of one sharp (F#), and a 2/4 time signature. The melody is written on a single staff. Copyright information: *Copyr. 1925 Bclura*

25. (Action) HELEN LOCKS DOOR AND LEAVES .....Thrills (Sanders) .....2½ Min.

Musical notation for item 25, featuring a treble clef, a key signature of one sharp (F#), and a 2/4 time signature. The melody is written on a single staff. Copyright information: *Copyr. 1925 Sanders*

26. (Title) OH YES, I'M A CHEST FIEND .....Tonight's My Night With Baby (Meyer) .....1½ Min.

Musical notation for item 26, featuring a treble clef, a key signature of one sharp (F#), and a 2/4 time signature. The melody is written on a single staff. Copyright information: *Copyr. 1926 I. Berlin*

27. (Title) MORNING .....Repeat Theme No. 15 .....1½ Min.

Musical notation for item 27, featuring a treble clef, a key signature of one flat (Bb), and a 2/4 time signature. The melody is written on a single staff.

28. (Action) HELEN AT DOOR ..... Scherzando Hurry (Frey) ..... 1 3/4 Min.

*Western Allegro*  
Musical notation for "HELEN AT DOOR" with tempo marking *Scherzando*. Copyright 1925 Robbins Engel.

29. (Title) DID YOU HIRE THOSE MEN ..... Because I Love You (Berlin) ..... 1 Min.

*Valse*  
Musical notation for "DID YOU HIRE THOSE MEN" with tempo marking *Valse*. Copyright 1926 I. Berlin.

30. (Title) BACK IN LONDON ..... By-Gone Days (Pintel) ..... 2 1/4 Min.

*Melodie*  
Musical notation for "BACK IN LONDON" with tempo marking *Andte*. Copyright 1932 Berlin.

31. (Title) SIR REGINALD WILL ..... Nirvana (Mouton) ..... 1 3/4 Min.

*Pulcinello*  
Musical notation for "SIR REGINALD WILL" with tempo marking *Allte*. Copyright 1925 J. Ves.

32. (Title) DON'T WASTE SYMPATHY ON HER ..... I'm Walking Around in Circles (Phillips) ..... 1/2 Min.

*Modto*  
Musical notation for "DON'T WASTE SYMPATHY ON HER" with tempo marking *Modto*. Copyright 1926 Leo. Feist.

33. (Title) MIDNIGHT ..... Sittin' Around (Sanders) ..... 1 1/4 Min.

*Modto*  
Musical notation for "MIDNIGHT" with tempo marking *Modto*. Copyright 1926 Leo Feist.

34. BREAKFAST TIME ..... Aubade Printaniere (Lacombe) ..... 1 1/2 Min.

*Allte*  
Musical notation for "BREAKFAST TIME" with tempo marking *Allte*. Copyright 1907 C. Fischer.

35. (Action) BOUND MAN HOPS INTO HALLWAY ..... Repeat No. 25 "Thrills" ..... 1/2 Min.

*Allte*  
Musical notation for "BOUND MAN HOPS INTO HALLWAY" with tempo marking *Allte*. Copyright 1907 C. Fischer.

36. (Action) BUTLER RECOGNIZES REGGIE ..... It Had to be You (Jones) ..... 1/2 Min.

*Modto*  
Musical notation for "BUTLER RECOGNIZES REGGIE" with tempo marking *Modto*. Copyright 1924 J.H. Remick.

37. (Title) HELEN, I WANT TO BE ..... Un Sonnet (Powers) ..... 3/4 Min.

*Modto aspr.*  
Musical notation for "HELEN, I WANT TO BE" with tempo marking *Modto aspr.*. Copyright 1927 Robbins Engel.

38. (Title) PARDON ME, I HAVE SOMETHING HERE... Forget Me Not (Macbeth) ..... 1 1/2 Min.

*Allte*  
Musical notation for "PARDON ME, I HAVE SOMETHING HERE" with tempo marking *Allte*. Copyright 1913 C. Fischer.

39. (Action) REGGIE PICKS KITTY UP IN HIS ARMS..... Repeat Theme No. 15 ..... 3/4 Min.

*Modto*  
Musical notation for "REGGIE PICKS KITTY UP IN HIS ARMS" with tempo marking *Modto*.

Country of Origin, U. S. A.

THE END

Orchestrations or single piano parts of each separate musical selection suggested hereon, can be purchased from CAMEO MUSIC SERVICE CORPORATION, 315-317 WEST 47TH STREET, NEW YORK CITY.

950157501