

M. J. MINTZ (PATENT)
JULY 31, 1923.

1927

D. W. GRIFFITH
presents
"THE BATTLE OF THE SEXES"

with
JEAN HERSHOLT and PHYLLIS HAVER
BELLE BENNETT

Don Alvarado—Sally O'Neil

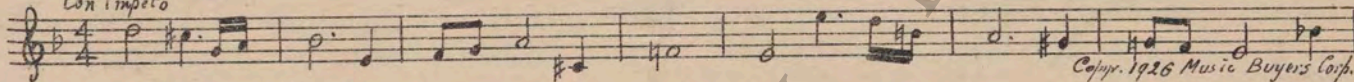
From the story by
Daniel Carson Goodman
Compiled by Ernst Luz
United Artists Picture

Length of film 9 reels (7930 feet)

Maximum projection time 1 hour, 30 minutes

1 AT SCREENING Symphonic Incidentals No. 1 (Marquardt) 1¼ Min.

Con impeto



Copyright 1926 Music Buyers Corp.

2 (Action) MANICURIST SITS DOWN AT BARBER CHAIR Strande D'Ostende (Hintz) 1¼ Min.

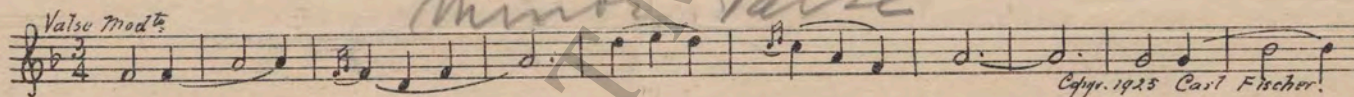
Tempo Conmodo



Copyright 1928 Photo Play Music Co.

3 (Title) I SEE BY THE PAPERS Bayaderes from "Babylon" (Elie) (DK. GREEN) 1½ Min.

Valse mod^{te}



Copyright 1925 Carl Fischer.

4 (Action) FADE-OUT OF GIRL IN BARBER CHAIR Twinkling (Hauenschild) (YELLOW) 2 Min.

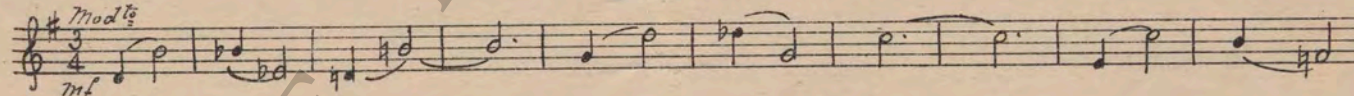
All^{to}



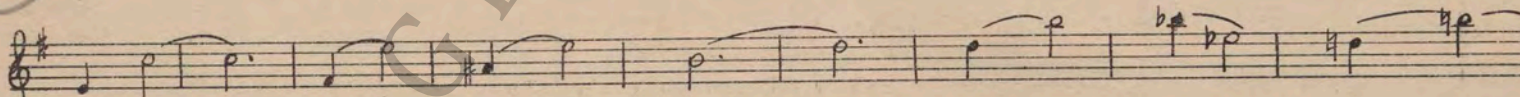
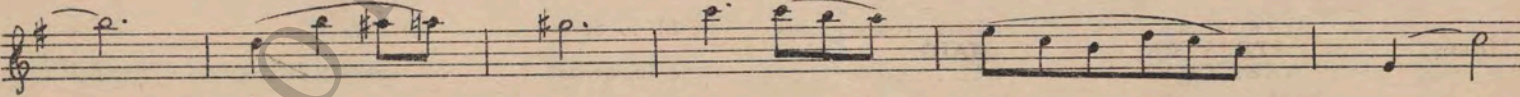
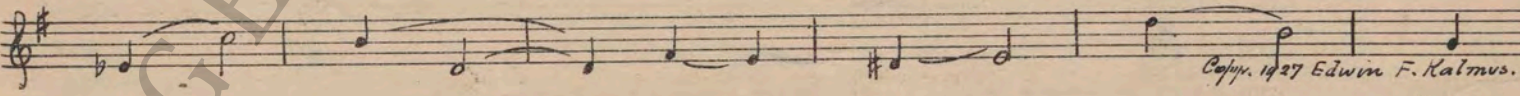
Copyright 1928 Photo Play Music Co.

5 (Action) MOTHER HAS SHAWL ON SHOULDERS Adoree (Friml) (WHITE) 2¾ Min.

Mod^{te}
mf



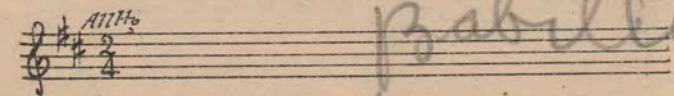
11

Copyright 1927 Edwin F. Kalmus.

6 (Action) MOTHER DRIES HER EYES Repeat No. 4 (YELLOW) ¾ Min.

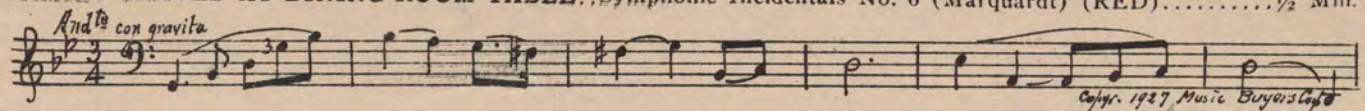
All^{to}



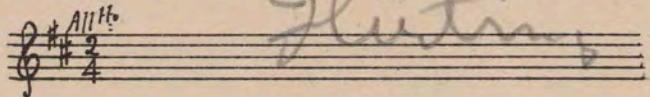
habillage
D - Family Seated at Dining Room table

7 (Action) FAMILY SEATED AT DINING ROOM TABLE, Symphonic Incidentals No. 6 (Marquardt) (RED).....½ Min.

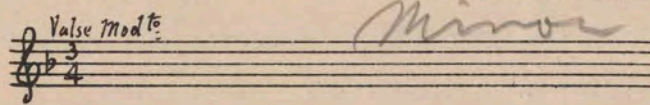
9

And^{te} con gravita

Copyr. 1927 Music Buyers Corp.

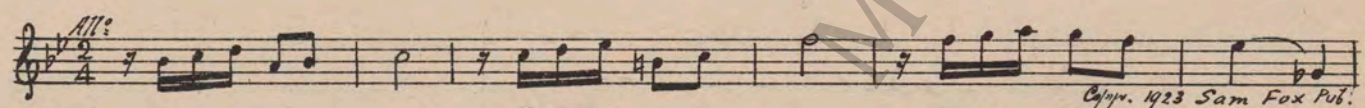
8 (Action) DINING-ROOM TABLE SCENE Repeat No. 4 (YELLOW).....1¾ Min.

All^{te}

Gliding Butterflies

9 (Action) FADE-OUT OF DINING ROOM TABLE SCENE Repeat No. 3 (DK. GREEN)1¼ Min.

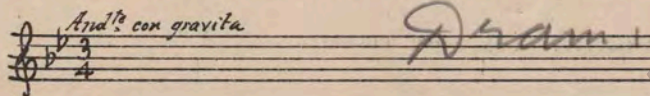
Valse Mod^{te}

Minor Valse

10 (Title) SUCH A MAN Serenade Petite (Zamecnik)1 Min.

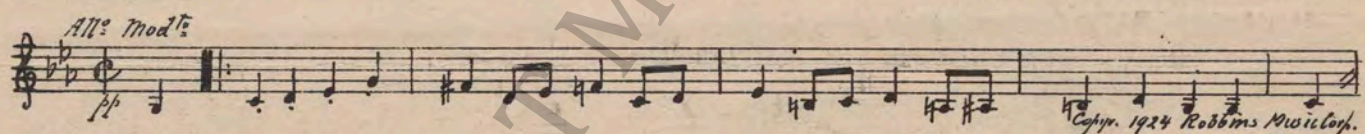
All^{te}

Copyr. 1923 Sam Fox Pub.

11 (Action) GIRL IN ROOM ALONE AFTER FAMILY LEAVES Repeat No. 7 (RED)1 Min.

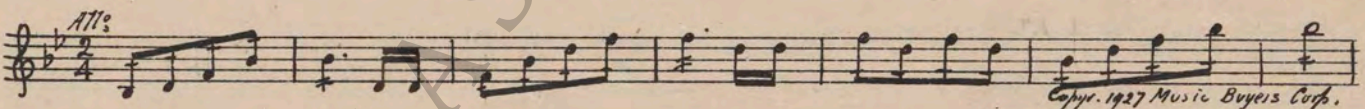
2

And^{te} con gravita

Dram. Tens.

12 (Action) RAT SEEN ON FLOOR Misterioso Burlesque (Savino)1 Min.

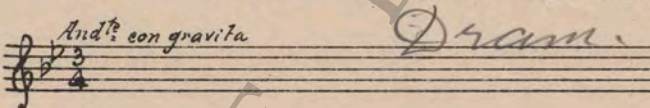
All^{te} Mod^{te}

Copyr. 1924 Robbins Music Corp.

13 (Action) MAN IN ROOM LAUGHS Symphonic Incidentals No. 10 (Marquardt)1 Min.

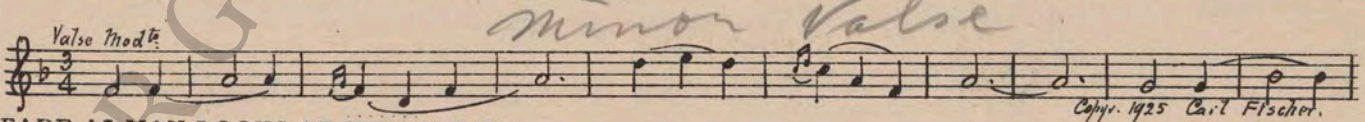
All^{te}

Copyr. 1927 Music Buyers Corp.

14 (Action) DOOR CLOSED AFTER TITLE: "SHUT THE DOOR" Repeat No. 7 (RED)¾ Min.

2

And^{te} con gravita

Dram. Tens.

15 (Action) MAN RUNS FROM COUCH FOR GLASS OF WATER Bayaderes from "Babylon" (Elie) (DK. GREEN).....3 Min.

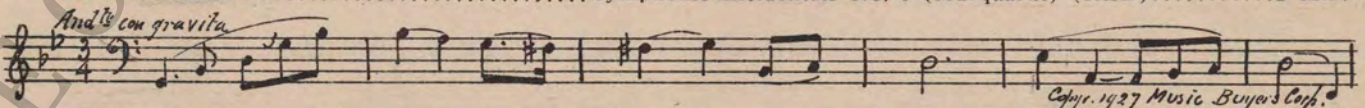
Valse Mod^{te}

Copyr. 1925 Carl Fischer.

Piano

16 (Action) FADE AS MAN LOOKS AT HIMSELF IN MIRROR TO GIRL AT PIANO..... Piano ad lib to Screen¾ Min.

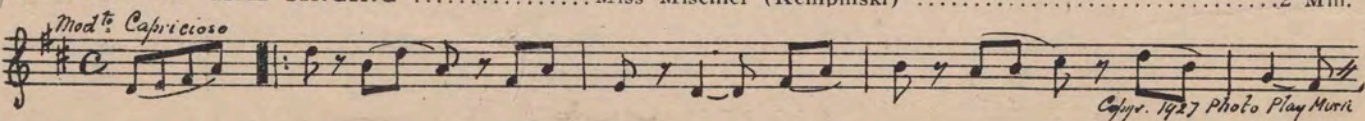
17 (Action) MAN ENTERS GIRL'S ROOM—MAID TAKES COAT Symphonic Incidentals No. 6 (Marquardt) (RED).....2 Min.

2

And^{te} con gravita

Copyr. 1927 Music Buyers Corp.

18 (Action) GIRL BEGINS TO PLAY PIANO AND SING... Play "Rose in the Bud"—Forster (Chappell)1 Min.
NOTE: Piano and Violin or voice synchronize to screen.

19 (Action) FADE-OUT OF GIRL SINGING Miss Mischief (Kempinski)2 Min.

Mod^{te} Capriccioso

Copyr. 1927 Photo Play Musc.

20 (Action) MAN FALLS ON BED Repeat No. 17 (RED) 1 Min.

② *Andte*

21 (Action) FADE-OUT OF PLOTTERS ON COUCH Repeat No. 19 "Miss Mischief" 2 Min.

Modto capriccioso

22 (Action) FADE-OUT AS MAN LEAVES ROOM DRESSED Twinkling (Hauenschild) (YELLOW) 1¼ Min.

Fine

Copyr. 1928 Photo Play M.

23 (Action) FADE-OUT AFTER TITLE: "PLEASE MUMSEY" Cocotte (Tyson) 1¼ Min.

Modto

Copyr. 1928 Photo Play Mus. Co

24 (Title) DO YOU THINK I CAN GET ANYWHERE..... Poppy Love Theme (Luz) 1¼ Min.

Andte

Copyr. 1917 Photo Play Mus. Co

25 (Action) FADE-OUT AS FAMILY LEAVES HOUSE TO CABARET That's My Weakness Now (Green) 1 Min.

Modto

Copyr. 1928 Green & Sept

26 (Action) GIRL AT TABLE EATING Repeat No. 24 "Poppy Love Theme" ¼ Min.

Andte

27 (Action) END OF ACT—PEOPLE ENTER CABARET..... Repeat No. 25 "That's My Weakness Now" 2½ Min.

Modto

28 (Action) MAN SHOWS MONEY—WRAPS INTO GIRL'S HAIR Repeat No. 17 (RED) 1 Min.
NOTE: Play very soft after opening and loud after Title: "Mumsey, I Don't Like This Place".

② *Andte*

29 (Action) FAMILY AT TABLE HAVE BILL Out of the Dawn (Donaldson) 1 Min.

Modto

Copyr. 1928 Donaldson, Douglas & Gumble

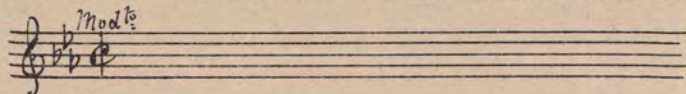
30 (Action) VAMPIRE KISSES MAN Symphonic Incidentals No. 19 (Marquardt) ¾ Min.

Modto dramatico

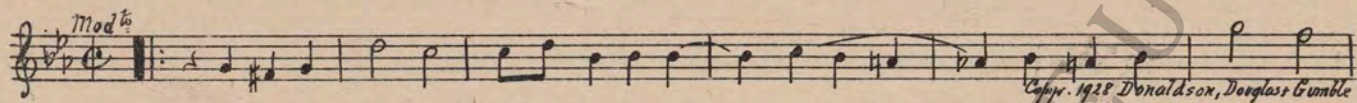
Copyr. 1928 Music Buyers Corp

D - Wife motions, and Walks away

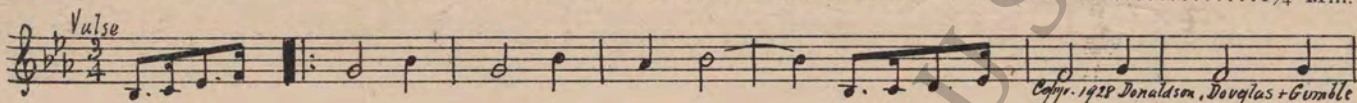
31 (Action) WIFE MOTIONS AND BEGINS TO WALK..... Repeat No. 29 "Out of the Dawn"1¼ Min.



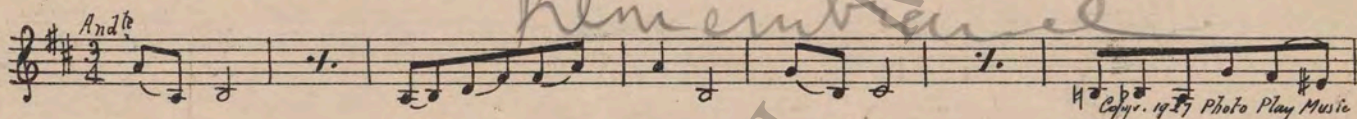
32 (Action) PEOPLE STOP DANCING AND APPLAUD.....Anything You Say (Donaldson)1½ Min.



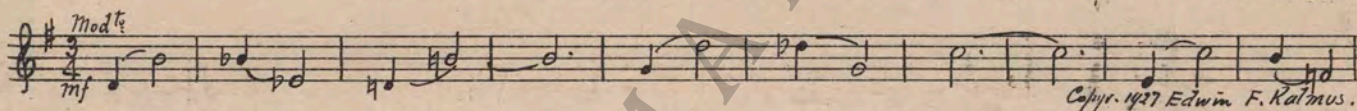
33 (Title) MAY IJust Another Night (Donaldson)1¾ Min.



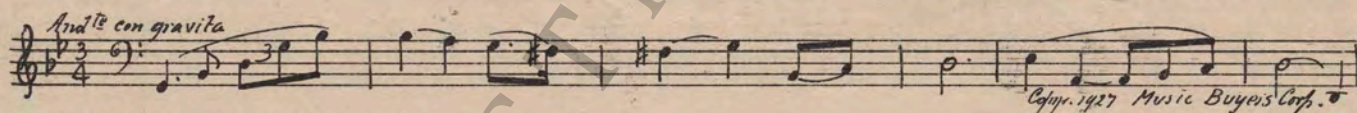
34 (Action) MAN TAKES OFF HIS SHOES IN CABARET...Broken Vows (Kempinski)3¼ Min.



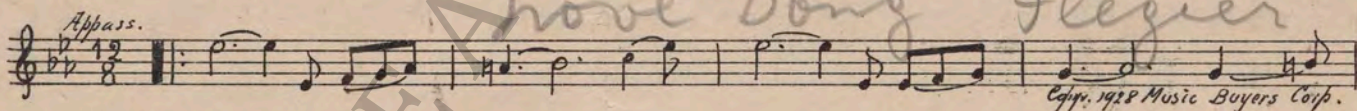
35 (Title) MORE NIGHT WORKAdoree (Friml) (WHITE)2¼ Min.



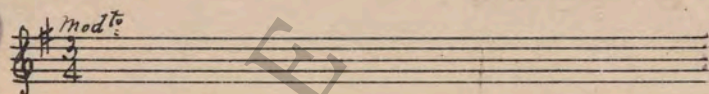
36 (Title) I CAN'T TONIGHTSymphonic Incidentals No. 6 (Marquardt) (RED).....1¼ Min.



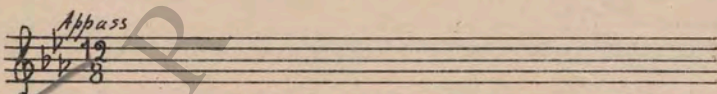
37 (Action) HUSBAND WALKS FROM WIFE (SEGUE QUICK)Melodic Appassionato No. 1 (Marquardt)¾ Min.



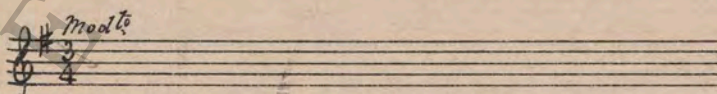
38 (Action) HUSBAND WALKS OUT OF ROOM— STOPS IN HALL Repeat No. 35 (WHITE)½ Min.



39 (Action) HUSBAND WALKS OUT OF HALL Repeat No. 37 "Melodic Appassionato"1 Min.



40 (Action) DAUGHTER HAS MOTHER'S HEAD ON HER LAP Repeat No. 35 (WHITE)½ Min.



41 (Action) FADE-OUT OF MOTHER AND DAUGHTER.... Misterioso No. 2 (Hintz)1¾ Min.



42 (Action) YOUNG MAN WALKS OUT OF ROOM.....Appassionato Lirico (Bradford)2 Min.

Musical notation for item 42. Tempo: *Molto Modto*. Dynamics: *mf*. Copyright: 1926 Belwin Inc.

43 (Action) GIRL LIES DOWN ON COUCHBayaderes from "Babylon" (Elie) (DK. GREEN).....1/2 Min.

Musical notation for item 43. Tempo: *Valse Modto*. Handwritten: *Minor Valse*. Copyright: 1925 Carl Fischer.

44 (Action) FADE-OUT OF GIRL ON COUCHThe Answer In Your Eyes (Savino)3 Min.

Musical notation for item 44. Tempo: *Modto*. Copyright: 1927 Robbins Music Corp.

45 (Action) FADE AFTER MAID CLOSSES HALL DOOR....Symphonic Incidentals No. 13 (Marquardt)3 Min.

Musical notation for item 45. Tempo: *Andte majestoso*. Copyright: 1928 Music Buyers Corp.

46 (Action) DAUGHTER DRAGS MOTHER FROM EDGE OF ROOFAdorce (Friml) (WHITE)1 3/4 Min.

TO 1

Musical notation for item 46. Tempo: *Modto*. Dynamics: *mf*. Copyright: 1927 Edwin F. Kalmus.

Musical notation for item 46 (continuation).

Musical notation for item 46 (continuation).

Musical notation for item 46 (continuation). Copyright: 1927 Edwin F. Kalmus.

47 (Action) DAUGHTER WALKS FROM MOTHERRepeat No. 41 "Misterioso No. 2"2 1/2 Min.

Musical notation for item 47. Tempo: *Misterioso*. Handwritten: *Conspiracy*.

48 (Action) STOP SHORT AS VAMPIRE OPENS CURTAINS AND SEES GIRLSymphonic Incidentals No. 1 (Marquardt)2 Min.

Musical notation for item 48. Tempo: *Con impeto*. Copyright: 1926 Music Buyers Corp.

49 (Action) CANE RINGING DOORBELLSymphonic Incidentals No. 6 (Marquardt) (RED).....1 Min.

2

Musical notation for item 49. Tempo: *Andte con gravita*. Handwritten: *Dram. lens.* Copyright: 1927 Music Buyers Corp.

"Every time you get a few drinks in you"

50 (Title) EVERY TIME YOU GET A FEW DRINKS
IN YOU Mysterious Tension (Axt) 1 Min.

Allo

Copyr. 1927 Robbins Music Cor.

51 (Title) JUST BE QUIET Repeat No. 49 (RED) 2 1/4 Min.

(2) *Andte con gravita Dram. Tens*

52 (Action) MAN SEES CANE ON PIANO Repeat No. 50 "Mysterious Tension" 1 3/4 Min.

Allo *Rythmic agitato*

53 (Action) FATHER SEES DAUGHTER IN MAN'S ARMS. Repeat No. 37 "Melodic Appassionato" 4 Min.

Appass. *Love Song*

54 (Action) GIRL DOESN'T LET FATHER LEAVE ROOM
AFTER TITLE: "YOU'D HIT ME" Romance (Karganoff) 1 1/2 Min.

Andte sost. *Three Songs*

Copyr. 1915 G. Schirmer

55 (Action) DAUGHTER RUNS OFF SCREEN
WITH MOTHER Inspiration (Edwards) 3 Min.

Andte sost.

Copyr. 1915 G. Schirmer

56 (Action) FADE-OUT OF FATHER IN ROOM Twinkling (Hauenschild) (YELLOW) 1 Min.

Allo *Love's Voyage*

Copyr. 1928 Photo Play Music Co

57 (Title) WE'VE SAVED THE BIGGEST PRESENT Repeat No. 46 (WHITE) 2 Min.

(1) *Modto*

THE END

Proper orchestral rest period is Nos. 34 to 44 inclusive.
NOTE: The repetition of numbers in this cue sheet is simplified by the use of the "LUZ" SYMPHONIC COLOR GUIDE, sold by Music Buyers Corporation, 1520 Broadway, New York City. The color suggested for repetition of numbers designates the Mood or Emotion, and is used as a code for such repetitions.
Country of Origin, U. S. A.

Complete orchestrations and single piano parts of each separate number contained hereon, can be purchased from CAMEO MUSIC SERVICE CORPORATION, 315-317 WEST 47TH STREET, NEW YORK CITY.