

M. J. MINTZ (PATENT)
JULY 31, 1923

WILLIAM FOX SPECIAL FILM PRODUCTION
GEORGE O'BRIEN and LOIS MORAN

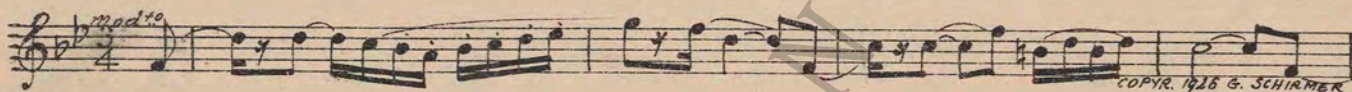
in
"BLINDFOLD"

Compiled by Michael P. Krueger
The timing is based on speed of 12 minutes per reel

- 1 AT SCREENING LOVE THEME: Forever (Ager) ¾ Min.



- 2 (Title) A SMALL FLAT Gaily Thro' Life (Schad) 2 Min.



- 3 (Action) CHANGE OF SCENE TO POLICEMAN WALKING KELLY THEME: There's a Typical Tipperary (Silver) 1 Min.

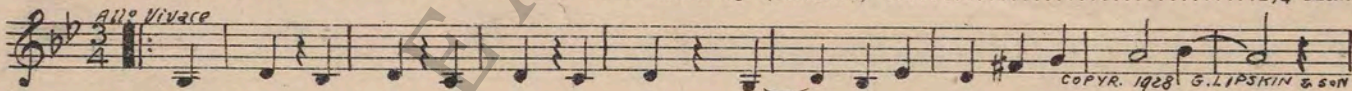


- 4 (Action) POLICEMAN ENTERS HOUSE Gaiety (Savino) (Play Moderato) ¼ Min.

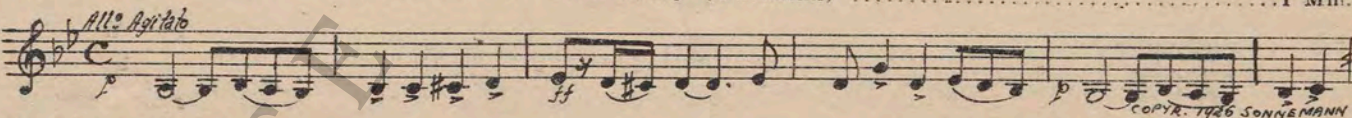


- 5 (Action) CLOSE-UP OF MAGAZINE STORY— "VELVET FINGERS" Repeat Love Theme No. 1 ¾ Min.

- 6 (Action) CHANGE OF SCENE TO EXTERIOR— JEWELRY STORE The Hold-Up (Reuther) 2¼ Min.



- 7 (Action) PISTOL SHOT Ferocity (Carrozzini) 1 Min.



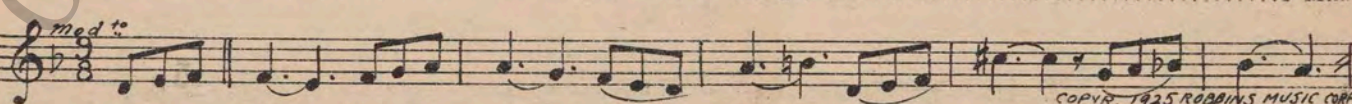
- 8 (Title) I SAW THEIR FACES Fuga (Gabriel Marie) ¼ Min.



- 9 (Action) MARY SEES ICE-CREAM BOX Dramatic Tension (Axt) 1½ Min.



- 10 (Action) O'BRIEN ENTERS HOME In Despair. (Berge) 1 Min.



- 11 (Title) **A WEEK OF RELENTLESS** Salvo (Gabriel Marie) 1¼ Min.

 Musical notation for 'A WEEK OF RELENTLESS' in G major, 2/4 time, starting with a 7-measure rest and a first ending bracket. *And^{te}* *pp*. COPYR. 1918 RICORDI
- 12 (Title) **THAT'S THE MAN—RIGHT THERE!** Symphonic Incidentals No. 13 (Marquardt) 4½ Min.

 Musical notation for 'THAT'S THE MAN—RIGHT THERE!' in G major, 2/4 time. *And^{te}* *pp*. COPYR. 1928 MUSIC BUYERS CORP
- 13 (Action) **AFTER CASE IS DISMISSED** Dilemma (Savino) ¾ Min.

 Musical notation for 'AFTER CASE IS DISMISSED' in G major, 2/4 time. COPYR. 1925 ROBBINS MUSIC
- 14 (Action) **CHANGE OF SCENE TO BENARD'S MUSIC STORE** Serenade (Drigo) ¾ Min.

 Musical notation for 'CHANGE OF SCENE TO BENARD'S MUSIC STORE' in G major, 2/4 time. *mod^{to}* *pp*. COPYR. 1909 CARL FISCHER
- 15 (Action) **VIOLINIST STOPS PLAYING** Gay Deceivers (Claypoole) ¼ Min.

 Musical notation for 'VIOLINIST STOPS PLAYING' in G major, 2/4 time. *mod^{to}* *p*. COPYR. 1928 IRVING BERLIN
- 16 (Title) **THE INSURANCE COMPANY** Marche Mysterieuse (Schad) 2 Min.

 Musical notation for 'THE INSURANCE COMPANY' in G major, 2/4 time. *marcia* *mp*. COPYR. 1925 FEATURE MUSIC CO
- 17 (Title) **YOU WAIT HERE, MARY** Anxiete (Srawley) ¾ Min.

 Musical notation for 'YOU WAIT HERE, MARY' in G major, 2/4 time. *With passion* *mf*. COPYR. 1928 SANDERS-WEISS
- 18 (Action) **O'BRIEN ENTERS MUSIC STORE** Ondes Mysterieuses (Franceschi) 1 Min.

 Musical notation for 'O'BRIEN ENTERS MUSIC STORE' in G major, 2/4 time. COPYR. 1925 SONNEMANN CO
- 19 (Action) **FIGHT BEGINS** Commotion (Minot) ¾ Min.

 Musical notation for 'FIGHT BEGINS' in G major, 2/4 time. *All^o molto* *f*. COPYR. 1927 BELWIN INC
- 20 (Action) **MARY APPROACHES KELLY ON FLOOR** Dramatic Finale (Noyes) 1¼ Min.

 Musical notation for 'MARY APPROACHES KELLY ON FLOOR' in G major, 2/4 time. *maestoso* *f*. COPYR. 1922 HAWKES & SON
- 21 (Title) **WHERE AM I?** Turbulence (Borch) 2½ Min.

 Musical notation for 'WHERE AM I?' in G major, 2/4 time. *Agitato con fuoco* *mf*. COPYR. 1918 S.M. BERG
- 22 (Action) **MAN CALLS FOR POLICE** Minor Hurry (Berge) ¼ Min.

 Musical notation for 'MAN CALLS FOR POLICE' in G major, 2/4 time. *All^o* *p*. COPYR. 1926 ROBBINS MUSIC CO

23 (Action) AUTOMOBILE DRIVES UP Mystic Andante (Sibelius) 3 Min.

Andte

Copyright 1925 Schlesinger

24 (Action) TELEPHONE RINGS A Mysterious Fable (Juon) 1 Min.

Andte

Copyright 1926 Schlesinger

25 (Action) DOCTOR TAKES GUN OUT Darkness (Brunelli) 1 Min.

Largo misterioso

Copyright 1927 G. Schirmer

26 (Title) YOU'LL FIND A MODEL The Conspirators (Roder) 1 1/4 Min.
NOTE: When other girl enters—strings tremolo.

Allegato misterioso

Copyright 1927 Edw. F. Kalmus

27 (Action) INSERT OF NEWSPAPER Mystery (Baynes) 1 1/4 Min.

Valse

Copyright 1914 Boston Music Co

28 (Action) KELLY SEEN IN POLICE HEADQUARTERS.. Mood Pensive (Applefield) 3/4 Min.

Andte

Copyright 1918 Sam Fox

29 (Action) CHANGE OF SCENE BACK TO APARTMENT.. Repeat No. 27 "Mystery" 3/4 Min.

30 (Action) CHANGE OF SCENE TO GAUNT JEWELRY STORE Fleeting Shadows (Weiss) 2 1/4 Min.

Myst. alla Valse

Copyright 1925 G. Schirmer

31 (Action) CHANGE OF SCENE TO KELLY IN RESTAURANT Requitted Love (Rollinson) 3/4 Min.

Andte

Copyright Oliver Ditson Co

32 (Action) KELLY GETS INTO TAXI Symphonic Incidentals No. 18 (Marquardt) 1 Min.

Allo. agitato

Copyright 1928 Music Buyers Corp

33 (Title) IT WAS EASY A Contrapuntal Misterioso (Schad) 1 1/4 Min.

Con mistero

Copyright 1928 Belwin Inc.

34 (Action) KELLY AND JANITOR SEEN Jingles (Zamecnik) 3/4 Min.

Allo.

Copyright 1928 Sam Fox

35 (Action) CHANGE OF SCENE BACK TO MARY IN APARTMENT Tense Misterioso (Berge) 1 1/2 Min.

molto mosse

Copyright 1925 Robbins Music Cor.

36 (Title) WHO ARE YOU—AND WHAT Afflizione (Gabriel Marie) 2¼ Min.

Larghetto

Copyright 1918 Ricordi

37 (Action) CHAUFFEUR ENTERS Silence 5 Sec.

38 (Action) MARY SCREAMS Repeat No. 20 "Dramatic Finale" 1¼ Min.

39 (Action) MARY'S MIND CLEARS—SHE
RECOGNIZES KELLY Repeat Love Theme No. 1 1 Min.

40 (Action) MARY AND KELLY SNEAK OUT OF DOOR... Stealthy Escape (Zamecnik) 1¾ Min.

Andante misterioso

Copyright 1927 Sam Fox

41 (Action) MARY ENTERS ROOM WHERE
JEWELERS ARE Tensive Misterioso (Peele) 1¼ Min.

Molto moderato

Copyright 1926 Belwin

42 (Action) BANDIT HOLDS UP JEWELERS Astir (Berge) 1¼ Min.

Allo

Copyright 1926 Robbins Music Corp.

43 (Action) KELLY HOLDS UP GANG Stormy Moments (Bierman) ¾ Min.

Allo impetuoso

Copyright 1927 America n Com pos.

44 (Action) DOCTOR SEEN Stalking the Prey (Kempinski) ¾ Min.

Moderato con moto

Copyright 1928 Irving Berlin

45 (Action) MARY RETURNS TO ROOM AFTER
ANSWERING PHONE Turmoil (Brunelli) ¾ Min.

Agitato

Copyright 1926 G. Schirmer

46 (Action) DOCTOR HOLDS UP KELLY Mystery Hurry (Berge) 1 Min.

Allo molto

Copyright 1925 Robbins Music Corp.

47 (Action) KELLY STARTS TO FIGHT Tumult (Verdi) ½ Min.

Allo agitato

Copyright 1926 Cinemusica Service

48 (Action) POLICE ENTER Joyful Hurry No. 1 (Baron) 1½ Min.

Allo vivace

Copyright 1922 Irving Berlin

49 (Title) YOU'LL COME BACK TO DUTY Repeat Love Theme No. 1 ¼ Min.

THE END

Printed in U. S. A.

Complete orchestrations and single piano parts of each separate number contained hereon, can be purchased from CAMEO MUSIC SERVICE CORPORATION, 315-317 WEST 47TH STREET, NEW YORK CITY.

95:1622:1