

230

Thematic Music Cue Sheet

M. J. MINTZ PATENT
JULY 31, 1924

ADOLPH ZUKOR and JESSE L. LASKY

present

A Sam Wood Production

' BLUFF '

with

Agnes Ayres and Antonio Moreno

From the story by Rita Weiman and Josephine L. Quirk

Screen play by Willis Goldbeck

Music compiled by James C. Bradford

Footage 5,442 feet

A Paramount Picture



1 AT SCREENING Starlight (Zulueta) 1 3/4 Min.

All. to

pp
Copyr. 1913, by Chappell & Co.

2 (Action) SKY LINE OF NEW YORK Le Voile de Salambo (Aubry) 2 1/4 Min.

Largo et vibrant

f

3 (Action) BETTY LEAVES OFFICE OF CONROY Vision D'Amour (Friml) 2 1/2 Min.

Mod. to

f
Copyr. 1913, by G. Schirmer, Inc.

4 (Action) BETTY ENTERS ROOM Pensee Lyrique (Geehl) 2 1/2 Min.

And. mo

pp
Copyr. 1920, by G. Schirmer, Inc.

5 (Title) THERE'S ONE THING TO BE SAID Yester-Love (Borch) 3 1/2 Min.

And. mo

pp
Copyr. 1916, by G. Schirmer, Inc.

6 (Title) A FEW DAYS LATER Passepied (Delibes) 4 Min.

All. o

pp
Copyr. 1912, by Carl Fischer

7 (Action) HAND PUSHES BUTTON Air de Ballet (Herbert) 1 3/4 Min.

Mod. to

pp
Copyr. 1912, by G. Schirmer, Inc.

8 (Action) MACHINE CUTTING CHEESE THEME: Baker's Boy and Chimney Sweep (Herbert) 1 3/4 Min.

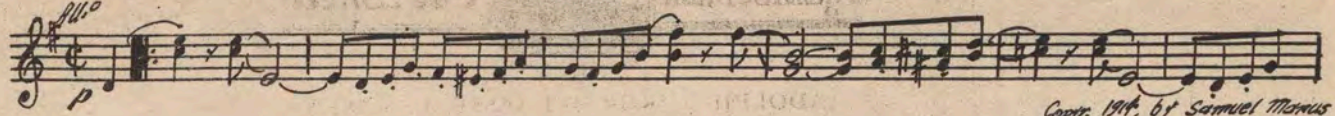
Tempo di Valze
3/4

9 (Title) A GOOD RECIPE FOR ROMANCE At Dawning (Cadman) 2 1/2 Min.

Mod. to

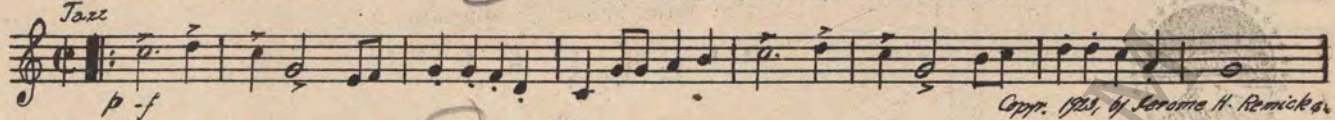
pp
Copyr. 1919, by Oliver Ditson Co.

10 (Title) AND THE NEXT DAY WAS Midsummer (Maquarre) 2¾ Min.



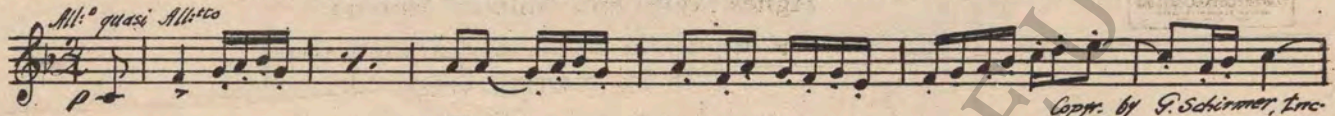
Copyright 1914, by Samuel Mayson

11 (Action) MR. O'BRIEN IN HALLWAY Barney Google (Conrad) 1¼ Min.



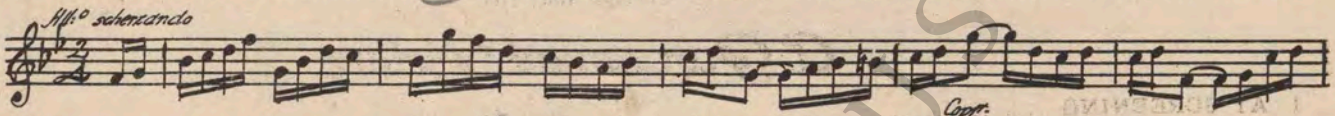
Copyright 1923, by Jerome H. Remick & Co.

12 (Action) WOMAN ENTERS Prelude (Jarnfelt) 1¾ Min.



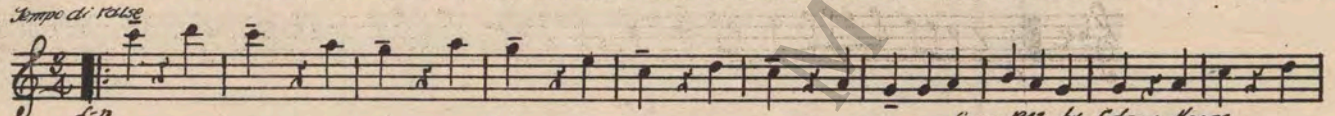
Copyright by G. Schirmer, Inc.

13 (Title) FOR THE NEXT FIFTY Marionette (Arndt) 3¾ Min.



Copyright

14 (Action) BETTY APPEARS FROM BOUDOIR Valse Palais De Danse (Horne) 3½ Min.



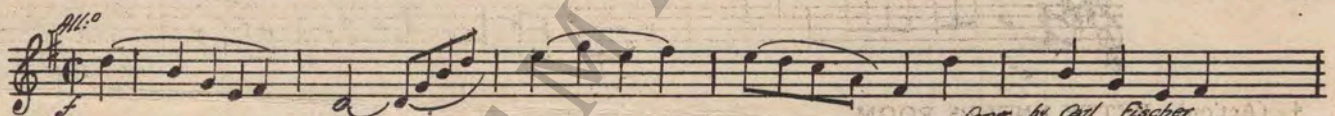
Copyright 1911, by Edgar Horne

15 (Action) MR. O'BRIEN SNEAKS BACK INTO ROOM L'Encore (Herbert) 2 Min.



Copyright 1910, by M. Witmark & Sons

16 (Action) CONROY ENTERS AGAIN Babillage (Gillet) 2½ Min.



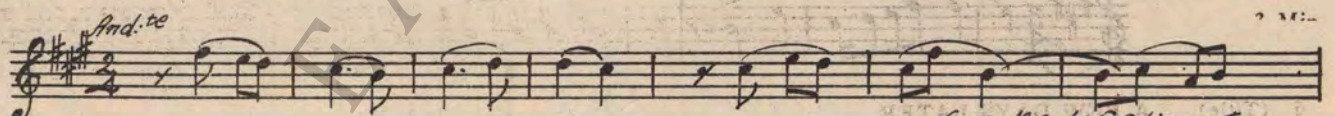
Copyright by Carl Fischer

17 (Action) BLAKELY ENTERS Dram. Tension No. 36 (Andino) 1¼ Min.



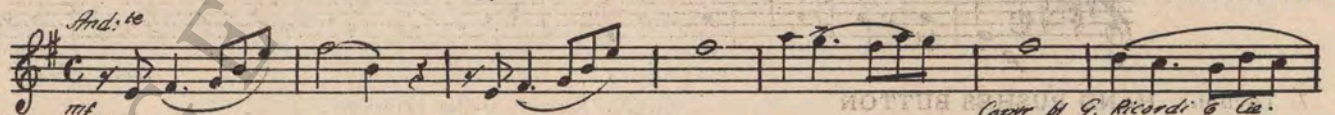
Copyright 1917, by S. M. Berg

18 (Title) FITZIE IS SOME SHEIK Romance (Karganoff) 3¾ Min.



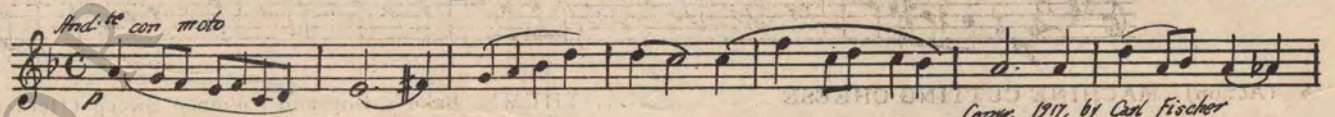
Copyright 1915, by G. Schirmer, Inc.

19 (Action) FITZ ENTERS OFFICE Disperazione (Gabriel-Marie) 3 Min.



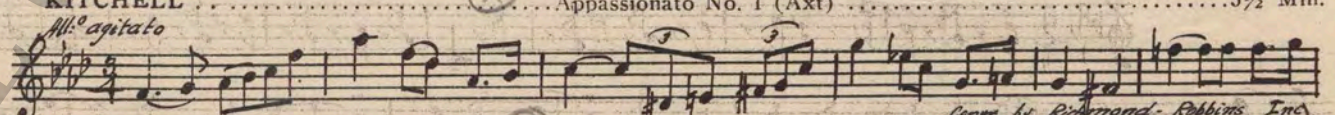
Copyright by G. Ricordi & Co.

20 (Title) WE DON'T WANT YOU Romance (Grunfeld) 2½ Min.



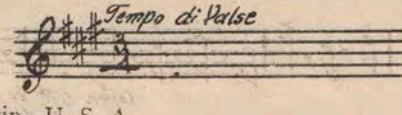
Copyright 1917, by Carl Fischer

21 (Action) FLASH-BACK TO BLAKELY AND KITCHELL Appassionato No. 1 (Axt) 3½ Min.



Copyright by Richmond Robbins, Inc.

22 (Action) BETTY TAKES CHECK FROM KITCHELL Repeat Theme No. 8 1½ Min.



Country of Origin—U. S. A.

THE END

Complete Orchestrations and single parts of all compositions contained herein can be purchased from

CAMEO MUSIC PUBLISHING CO., INC. 112-118 West 44th Street, New York City

95: 16 33 1