

*Handwritten:*  
 Blue Italian

Joseph M. Schenck  
 presents  
**CONSTANCE TALMADGE**  
 in  
**"BREAKFAST AT SUNRISE"**  
 Compiled by James C. Bradford  
**A First National Picture**

1 AT SCREENING ..... A Ball Scene (Nicode) ..... 1 Min.

*All<sup>o</sup>*

copyr 1911 G. Schirmer Inc.

2 (Title) A NEW HOTEL IN PARIS ..... Le Retour (Bizet) ..... 2 Min.

*All<sup>o</sup> vivace*

copyr G. Schirmer Inc.

3 (Action) CARS CRASH ..... Fugitive (Maiorana) ..... 1 Min.

*Speedily*

copyr 1926 Geo. H. Sonnesco

4 (Action) OFFICER SEES MADELINE ..... Oh Boy, What A Girl (Green) ..... 2 Min.

*Mod<sup>o</sup>*

copyr 1925 Shapiro Bernstein Inc.

5 (Action) PORTERS ENTER WITH BAGGAGE ..... A Spring Day (Haines) ..... 2 Min.

*All<sup>o</sup>*

copyr 1919 Hawkes & Son.

6 (Title) MADELINE LEE VISITED PARIS ..... Calling (Golden) ..... 2 Min.

*Espress.*

copyr 1927 Robbins Music Corp.

7 (Action) PIERRE ON WIRE ..... Cheatin' On Me (Pollack) ..... 3 Min.

*Mod<sup>o</sup>*

copyr 1925 Hagar Yellen & Bernstein Inc.

8 (Action) FLASH-BACK TO MADELINE ..... Love Motive (Clutsam) ..... 1/2 Min.

*And<sup>te</sup>*

copyr 1926 Hawkes & Son.

9 (Action) INSERT—MENU ..... Rural Flirts (Bradford) ..... 3 Min.

*All<sup>o</sup>*

copyr 1928 Belwin Inc.

10 (Title) UNPACK MY NEWEST GOWN ..... Murmuring Breezes (Gillet) ..... 1/2 Min.

Musical notation for "UNPACK MY NEWEST GOWN" in treble clef, 3/4 time, key of D major. Tempo: *All.<sup>o</sup>*. Copyright 1926 Manus Music Co.

11 (Action) FLASH-BACK TO DINING ROOM ..... Ma Poulette (Roberts) ..... 1 1/4 Min.

Musical notation for "FLASH-BACK TO DINING ROOM" in treble clef, 2/4 time, key of D major. Tempo: *Mod.<sup>o</sup>*. Copyright 1913 Carl Fischer.

12 (Action) MADELINE APPEARS IN DINING ROOM.... Miss Dollv Dollars (Herbert) ..... 3 Min.

Musical notation for "MADELINE APPEARS IN DINING ROOM" in treble clef, 2/4 time, key of D major. Tempo: *All.<sup>o</sup> Mod.<sup>o</sup>*. Copyright 1908 F. Witzmark & Sons.

13 (Action) LOULOU APPEARS ..... Vlad Tango (Firpo) ..... 2 1/4 Min.

Musical notation for "LOULOU APPEARS" in treble clef, 2/4 time, key of D major. Tempo: *Mod.<sup>o</sup>*. Copyright 1914 Jos. W. Stern Co.

14 (Title) THAT'S THE GIRL I WAS TO MARRY..... Avril Frileux (Mouton) ..... 3 3/4 Min.

Musical notation for "THAT'S THE GIRL I WAS TO MARRY" in treble clef, 2/4 time, key of D major. Tempo: *All.<sup>o</sup>*. Copyright 1925 J. Yues.

15 (Title) IT WOULD SERVE HER RIGHT ..... Chatter (Kahn) ..... 2 1/4 Min.

Musical notation for "IT WOULD SERVE HER RIGHT" in treble clef, 2/4 time, key of D major. Tempo: *All.<sup>o</sup>*. Copyright 1926 Sonneborn Music Co.

16 (Title) I WONDER IF THIS AFFAIR ..... Jeu d'Eventail (Mouton) ..... 2 1/2 Min.

Musical notation for "I WONDER IF THIS AFFAIR" in treble clef, 6/8 time, key of D major. Tempo: *All.<sup>o</sup> Mod.<sup>o</sup>*. Copyright 1924 J. Yues.

17 (Title) AND THEN BREAKFAST AT SUNRISE ..... La Peche Valse (Auvray) ..... 3/4 Min.

Musical notation for "AND THEN BREAKFAST AT SUNRISE" in treble clef, 2/4 time, key of D major. Tempo: *Valse.*. Copyright 1914 Jos. W. Stern Co.

18 (Title) SO THEY WERE MADE ONE ..... Escapade (Mouton) ..... 1 Min.

Musical notation for "SO THEY WERE MADE ONE" in treble clef, common time, key of D major. Tempo: *And.<sup>te</sup> sva*. Copyright 1924 J. Yues.

19 (Title) LET ME ALONE ..... Scherzando Hurry (Frey) ..... 2 3/4 Min.

Musical notation for "LET ME ALONE" in treble clef, 2/4 time, key of D major. Tempo: *Scherzando*. Copyright 1925 Robbins Music Corp.

20 (Action) DINING ROOM—QUEEN ENTERS ..... En Tapinois (Mouton) ..... 1 Min.

Musical notation for "DINING ROOM—QUEEN ENTERS" in treble clef, 2/4 time, key of D major. Tempo: *All.<sup>o</sup> non troppo*. Copyright 1925 J. Yues.

21 (Action) FLASH TO PIERRE IN BATH ..... Le Roi l'a dit (Delibes) ..... 1 Min.

Musical notation for "FLASH TO PIERRE IN BATH" in treble clef, 7/8 time, key of D major. Tempo: *All.<sup>o</sup> vivo*. Copyright 1914 Ross Jungnickel.

22 (Action) REGINALD TELEPHONING ..... Tout a Vous (Tyers) ..... ¾ Min.

Waltz  
 Musical notation for 'Tout a Vous' in treble clef, 3/4 time, key of D major. The melody is a waltz. Copyright 1921 E. B. Marks Music Co.

23 (Title) YOU'RE NOT GOING OUT TO-DAY, YOUNG MAN ..... Characteristic Allegro (Moskowsky) ..... 2 Min.

*All.<sup>o</sup>*  
 Musical notation for 'YOU'RE NOT GOING OUT TO-DAY, YOUNG MAN' in treble clef, common time, key of B-flat major. The tempo is marked 'All.<sup>o</sup>'. Copyright 1924 Robbins Music Corp.

24 (Title) I CAN'T GO ON ..... Adventure d'Amour (Bradford) ..... 2¼ Min.

*All.<sup>o</sup>*  
 Musical notation for 'I CAN'T GO ON' in treble clef, 3/8 time, key of B-flat major. The tempo is marked 'All.<sup>o</sup>'. Copyright 1927 Robbins Music Corp.

25 (Action) LOULOU AT DINING TABLE ..... Air de Ballet (Herbert) ..... 1¼ Min.

*Mod.<sup>o</sup>*  
 Musical notation for 'LOULOU AT DINING TABLE' in treble clef, 3/4 time, key of D major. The tempo is marked 'Mod.<sup>o</sup>'. Copyright 1912 G. Schirmer.

26 (Action) REGINALD ENTERS ROOM ..... Forget Me Not (Macbeth) ..... 2¼ Min.

*All.<sup>o</sup>*  
 Musical notation for 'Forget Me Not (Macbeth)' in treble clef, common time, key of C major. The tempo is marked 'All.<sup>o</sup>'. Copyright 1913 Carl Fischer.

27 (Action) PIERRE PICKS UP TELEPHONE ..... Marionette (Arndt) ..... 3¼ Min.

*All.<sup>o</sup>*  
 Musical notation for 'Marionette (Arndt)' in treble clef, 2/4 time, key of B-flat major. The tempo is marked 'All.<sup>o</sup>'. Copyright 1917 Sam Fox Pub. Co.

28 (Title) POOR PIERRE FORGETS EVERYTHING ..... Babillage (Gillet) ..... 2¼ Min.

*All.<sup>o</sup>*  
 Musical notation for 'Babillage (Gillet)' in treble clef, common time, key of D major. The tempo is marked 'All.<sup>o</sup>'. Copyright 1889 Carl Fischer.

29 (Action) PIERRE SLAMS DOOR ..... Repeat No. 24 "Adventure d'Amour" ..... 5 Min.

*All.<sup>o</sup>*  
 Musical notation for 'Repeat No. 24 Adventure d'Amour' in treble clef, 3/8 time, key of B-flat major. The tempo is marked 'All.<sup>o</sup>'. This block contains only the first few notes of the piece.

30 (Action) MADELINE TIP-TOES INTO VACANT ROOM ..... THEME: Can't You Hear Me Say I Love You (Brown) ..... 2¼ Min.

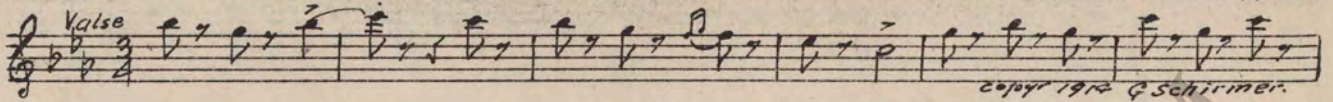
*All.<sup>o</sup> Espress.*  
 Musical notation for 'THEME: Can't You Hear Me Say I Love You (Brown)' in treble clef, 3/4 time, key of B-flat major. The tempo is marked 'All.<sup>o</sup> Espress.'. This block contains the first line of the piece.

Musical notation for 'THEME: Can't You Hear Me Say I Love You (Brown)' in treble clef, 3/4 time, key of B-flat major. This block contains the second line of the piece.

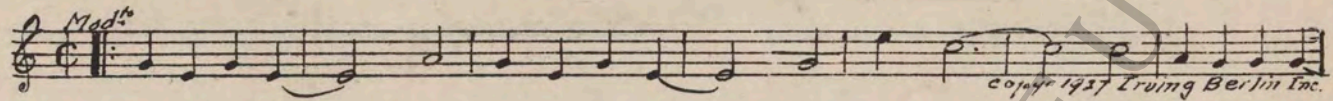
Musical notation for 'THEME: Can't You Hear Me Say I Love You (Brown)' in treble clef, 3/4 time, key of B-flat major. This block contains the third line of the piece.

Musical notation for 'THEME: Can't You Hear Me Say I Love You (Brown)' in treble clef, 3/4 time, key of B-flat major. This block contains the fourth line of the piece, ending with first and second endings.

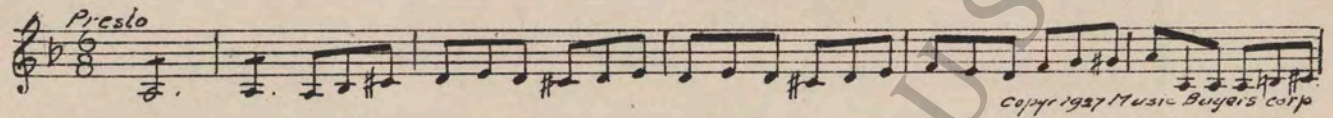
31 (Action) LOULOU LYING ON FLOOR ..... Baker's Boy and the Chimney Sweep (Herbert) ..... ¾ Min.



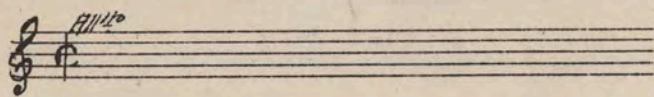
32 (Action) PIERRE AND SOLICITOR ENTER ROOM.... Someone Like You (Little) ..... 2 Min.



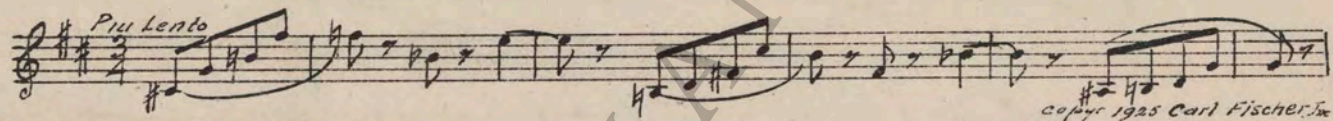
33 (Action) ARGUMENT STARTS ..... Symphonic Incidentals No. 5 (Marquardt) ..... 2¾ Min.



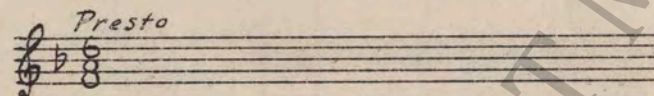
34 (Action) REGINALD ENTERS ..... Repeat No. 26 "Forget Me Not" ..... ½ Min.



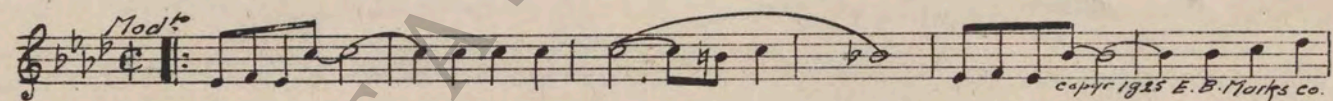
35 (Action) LOULOU ENTERS ..... The Jesters Serenade (Herbert) ..... ½ Min.



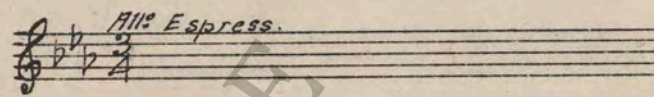
36 (Action) FLASH-BACK TO MADELINE AND PIERRE ..... Repeat No. 33 "Symphonic Incidentals No. 5" ..... ¾ Min.



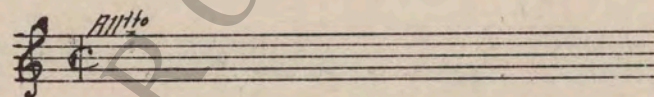
37 (Title) AREN'T YOU GOING TO SAY GOOD-BYE?... I Never Knew How Much I Loved You (Spear)..... 1¼ Min.



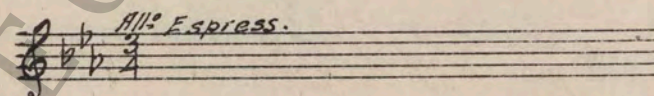
38 (Action) THEY EMBRACE ..... NOTE: Play "PP" con sordini strings only, very plaintive. Repeat Theme No. 30 ..... 1 Min.



39 (Action) MADAM IS OUT ..... Repeat No. 26 "Forget Me Not" ..... ½ Min.



40 (Action) LOULOU AND REGINALD LEAVE ROOM.... Repeat Theme No. 30 ..... 1 Min.



Printed in U. S. A.

THE END

Complete orchestration and single piano parts of each separate number contained hereon, can be purchased from CAMEO MUSIC SERVICE CORPORATION, 315-17 WEST 47TH STREET, NEW YORK CITY.

95: 1642:1