

M. J. MINTZ (PATENT)
JULY 31, 1923.



BRINGING UP FATHER



with
MARIE DRESSLER, POLLY MORAN and J. FARRELL MacDONALD

A Jack Conway Production
Continuity by Frances Marion
Based on the newspaper cartoon feature
by George McManus

Owned and copyrighted by
International Features Service, Inc.
A COSMOPOLITAN PRODUCTION

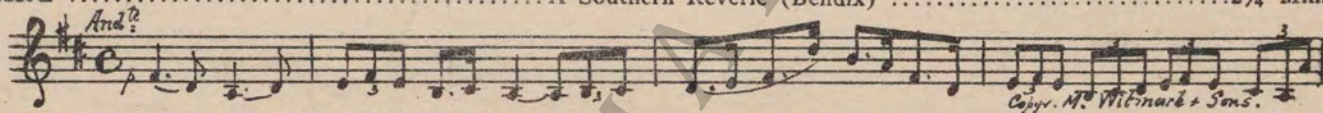
Directed by Jack Conway
Compiled by Ernst Luz

A METRO-GOLDWYN-MAYER PICTURE

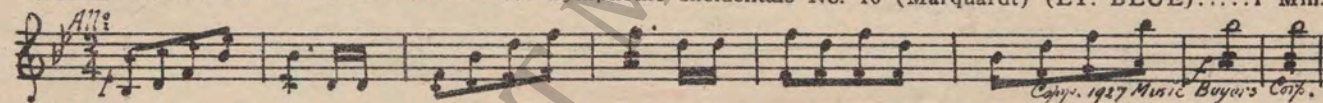
Length of film 7 reels (6310 feet)

Maximum projection time 1 hour, 15 minutes

- 1 AT SCREENING A Southern Reverie (Bendix) 2¼ Min.



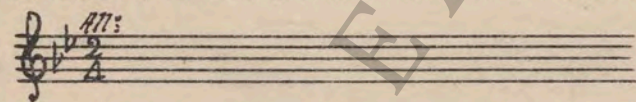
- 2 (Action) PHOTO STUDIO FADES TO PICTURE ON WALL Symphonic Incidentals No. 10 (Marquardt) (LT. BLUE) 1 Min.



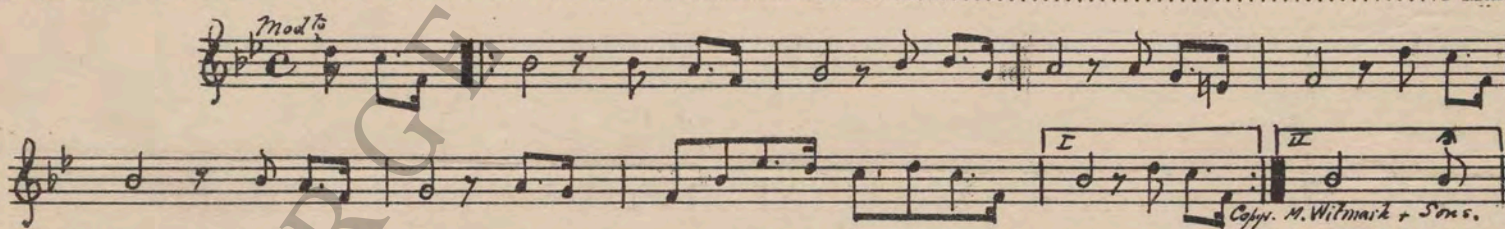
- 3 (Action) MILKMAN HIT ON HEAD Sunny Hours (Rich) 2 Min.



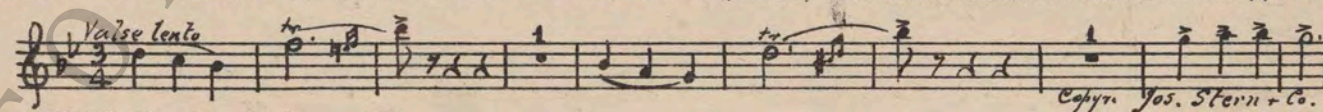
- 4 (Action) DOOR KNOCK Repeat No. 2 (LT. BLUE) 1 Min.



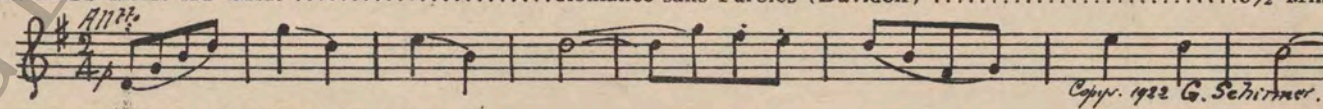
- 5 (Action) FADE OF POLLY MORAN AT WINDOW Sweet Adeline 1 Min.



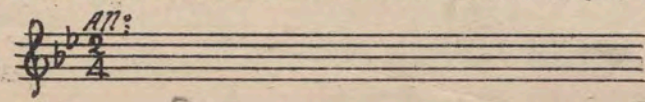
- 6 (Title) WITH THAT SINGING Fresh Flowers (Lincke) 1¼ Min.



- 7 (Action) ARMLESS MAN AT BAR Romance sans Paroles (Davidoff) 3½ Min.



- 8 (Title) IS THIS THE SMALLEST YOU GOT Repeat No. 2 (LT. BLUE) ½ Min.



Put this in the Cash Register

9 (Title) PUT THIS IN THE CASH REGISTER Fragrance Lane (Fresco) 1 Min.

Musical notation for item 9: Treble clef, 2/4 time, key signature of one sharp (F#), tempo marking 'Valse'. Copyright 1925 Belwin Inc.

10 (Action) TELEPHONE BELL RINGS Repeat No. 2 (LT. BLUE) 1 1/4 Min.

Musical notation for item 10: Treble clef, 2/4 time, key signature of one flat (Bb), tempo marking 'Alto'. Includes a circled red number '2'.

11 (Title) WAIT A MINUTE, MAGGIE Caressing Butterfly (Barthelemy) 2 Min.

Musical notation for item 11: Treble clef, 2/4 time, key signature of one sharp (F#), tempo marking 'Alto'. Copyright 1911 G. Schirmer.

12 (Action) PLAY ONCE AND SEGUE Love's Wilfulness (Barthelemy) 2 Min.

Musical notation for item 12: Treble clef, 2/4 time, key signature of one flat (Bb), tempo marking 'Andte appassionato', dynamic marking 'mf'. Copyright 1911 G. Schirmer.

13 (Action) JIGGS SITS DOWN IN ARM CHAIR La Confession (Morgan) 1 1/2 Min.

Musical notation for item 13: Treble clef, 2/4 time, key signature of one flat (Bb), tempo marking 'Valse'. Copyright 1916 E.B. Marks.

14 (Title) TELL PAPA WHAT HAPPENED Oh Mister (Frey) 3/4 Min.

Musical notation for item 14: Treble clef, 2/4 time, key signature of one flat (Bb), tempo marking 'Alto giusto', dynamic marking 'p-f'. Copyright 1924 Robbins Music Corp.

15 (Title) HERE COMES MY HONORED GUEST Call Me Sweetheart (Robe) (YELLOW) 1 Min.

Musical notation for item 15: Treble clef, 2/4 time, key signature of one flat (Bb), tempo marking 'Modto', dynamic marking 'mf'. Copyright 1927 G. Ricordi Co.

16 (Title) ALWAYS CALL ME DENNIS Punchinello (Herbert) 1 1/2 Min.

Musical notation for item 16: Treble clef, 2/4 time, key signature of one flat (Bb), tempo marking 'Alto'. Copyright M. Witmark & Sons.

17 (Action) FATHER FILLING HIS PIPE Yesterthoughts (Herbert) 3/4 Min.

Musical notation for item 17: Treble clef, 2/4 time, key signature of one sharp (F#), tempo marking 'Lento'. Copyright M. Witmark & Sons.

18 (Action) FATHER HURTS HIS FOOT Repeat No. 16 "Punchinello" 1 1/2 Min.

Musical notation for item 18: Treble clef, 2/4 time, key signature of one flat (Bb), tempo marking 'Alto'.

19 (Title) MONEY'S GONE TO YOUR HEAD Repeat No. 2 (LT. BLUE) 1 Min.

Musical notation for item 19: Treble clef, 2/4 time, key signature of one flat (Bb), tempo marking 'Alto'. Includes a circled red number '2'.

20 (Title) AUNTIE DEAR, IT'S HELEN Only a Smile (Zamecnik) (WHITE) 3/4 Min.

Musical notation for item 20: Treble clef, 2/4 time, key signature of one flat (Bb), tempo marking 'Andte'. Copyright 1921 Sam Fox Co.

21 (Action) DOG'S TAIL CAUGHT IN RAT TRAP Repeat No. 2 (LT. BLUE) 1/2 Min.

Musical notation for item 21: Treble clef, 2/4 time, key signature of one flat (Bb), tempo marking 'Alto'. Includes a circled red number '2'.

22 (Title) SOME OF MAGGIE'S FURNITURE Butterflies (Arundale) 2 1/2 Min.

Musical notation for item 22: Treble clef, 2/4 time, key signature of one flat (Bb), tempo marking 'Alto'. Copyright 1919 J. B. Cramer Co.

23 (Title) YES, BUT I LIKE MY MAH IONGG How-Wah-Ya (Banta) 1 1/4 Min.

One Step

Copyright 1924 Robbins Music Corp

24 (Action) STREET SCENE Repeat No. 2 (LT. BLUE) 1/2 Min.

2

25 (Action) JIGGS THROWS ROLLING PIN MANUFACTURER INTO COAL HOLE Chiffons and Laces (Baron) 3/4 Min.

To diminuendo

Copyright 1926 Belwin Inc

26 (Action) MAN BEGINS TO PLAY PIANO In a Little Spanish-Town (Wayne) (Piano and Voice) 3/4 Min.

Moderato

Copyright 1926 Leo Feist

27 (Action) JIGGS ENTERS—END OF SONG The Tragic Discovery (Patou) 1 Min.

Andante

Copyright 1924 Hawkes & Son

28 (Title) WILL YOU DEPRIVE YOURSELVES Repeat No. 2 (LT. BLUE) 1 Min.

2

29 (Action) POLLY MORAN KICKED The Awakening (Zamecnik) 1 1/2 Min.

Appassionato

Copyright 1924 Sam Fox

30 (Action) HALL AND STAIRWAY SCENE Repeat No. 15 (YELLOW) 1 Min.

Moderato

31 (Action) GIRL GOES BACK INTO HOME Andante Pathetique No. 10 (Berge) 1 Min.

Andante sost.

Copyright 1916 S. M. Berg

32 (Title) SO JIGGS LOOKED OVER LONG ISLAND Dainty Blossoms (Kahn) 2 Min.

All. moderato

Copyright 1925 Feature Music Co

33 (Title) THE BLACKBIRD CAFE Let a Smile Be Your Umbrella (Fain) 1 Min.

Moderato

Copyright 1927 Waterson, Berlin & Snyder

34 (Title) I MIGHT AS WELL Diane (Rapee) 3/4 Min.

Moderato

Copyright 1927 Sherman Claya Co

35 (Action) JIGGS HIT OVER HEAD WITH ROLLING PIN A Shepherd's Pipe and Summer Skies (Falk) 2 1/4 Min.

NOTE: Play introduction and Waltz.
F. 1/16

Copyright 1924 Ludwig Music Co

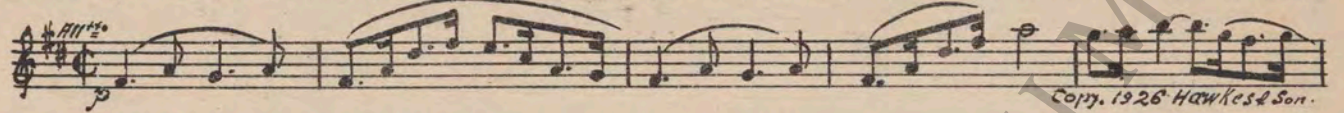
36 (Action) WIFE OPENS DOOR OF BEDROOM Melody (Franck) 3/4 Min.

Andante

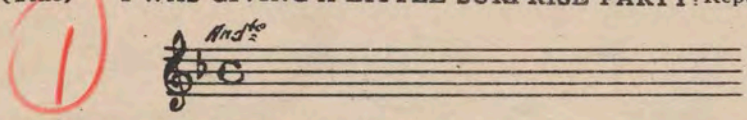
Copyright 1927 Emil Gschler

The Biggest Event

37 (Title) THE BIGGEST EVENT Pastime (Clutsam) 1 1/4 Min.



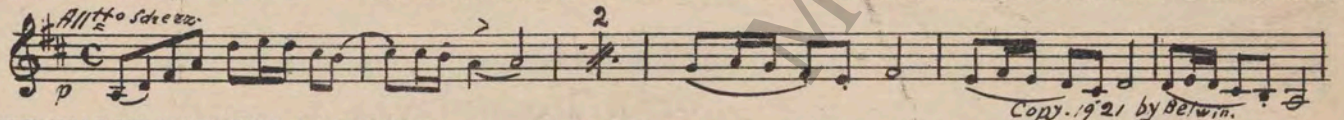
38 (Title) I WAS GIVING A LITTLE SURPRISE PARTY. Repeat No. 20 (WHITE) 1 1/4 Min.



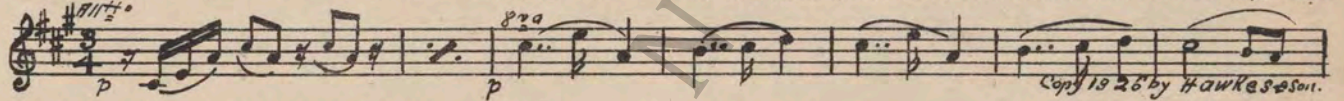
39 (Title) THAT EVENING MAGGIE Slumberland (Herringshaw) 2 1/4 Min.



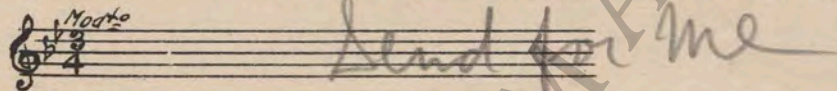
40 (Action) DENNIS WALKS TO GIRL AT CAKE Rendez-vous d'Amour (Edwards) 2 Min.



41 (Action) WIFE WALKS TO JIGGS AT CHAIR Love's Lullaby (Vermeire) 1 1/2 Min.



42 (Action) JIGGS HAS PEN—BEGINS TO WRITE Repeat No. 15 (YELLOW) 1 Min.



43 (Action) FLASH-BACK TO HOUSE INTERIOR Dew-Dew-Dewy Day (Johnson) 1/2 Min.

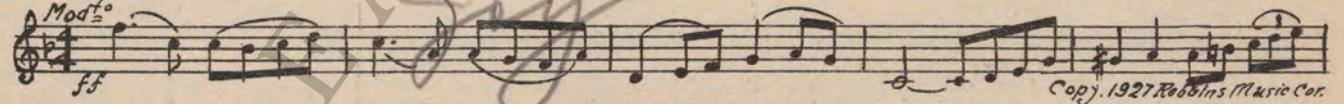


44 (Title) ARE YOU TRYING Repeat No. 2 (LT. BLUE) 1 Min.

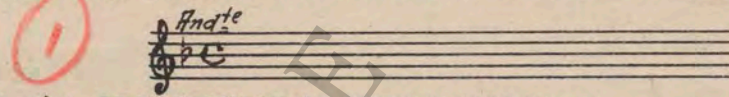
45 (Action) MAGGIE PREVENTS JIGGS SHOOTING HIMSELF Repeat No. 20 (WHITE) 3/4 Min.

46 (Action) LETTER TO MRS. JIGGS Repeat No. 2 (LT. BLUE) 1 Min.

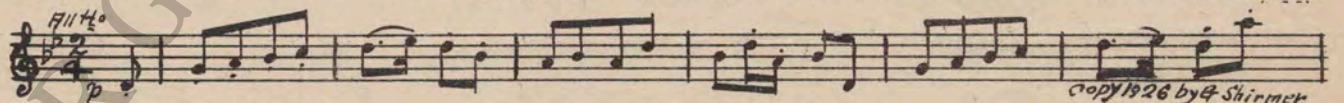
47 (Title) OH MAGGIE, MAGGIE Joyous Appassionato (Carbonara) 1 1/2 Min.



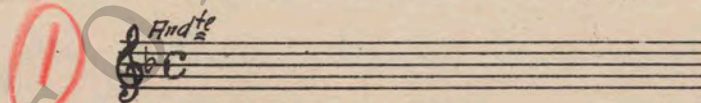
48 (Title) IF YOUR PRAYERS WERE ANSWERED Repeat No. 20 (WHITE) 1/2 Min.



49 (Action) SEGUE QUICK AS JIGGS IS HIT WITH HAMMER Celebrated Canzonetta (Mendelssohn) 1/2 Min.



50 (Action) FADE TO BED IN HOSPITAL Repeat No. 20 (WHITE) 1/2 Min.



THE END

Proper orchestral rest period is Nos. 20 to 32 inclusive.

NOTE: The repetition of numbers in this cue sheet is simplified by the use of the "LUZ" SYMPHONIC COLOR GUIDE, sold by Music Buyers Corporation, 1520 Broadway, New York City. The color suggested for repetition of numbers designates the Mood or Emotion, and is used as a code for such repetitions.

Country of Origin, U. S. A.

Complete orchestrations and single piano parts of each separate number contained hereon, can be purchased from CAMEO MUSIC SERVICE CORPORATION, 315-317 WEST 47TH STREET, NEW YORK CITY.

95:16:5:1