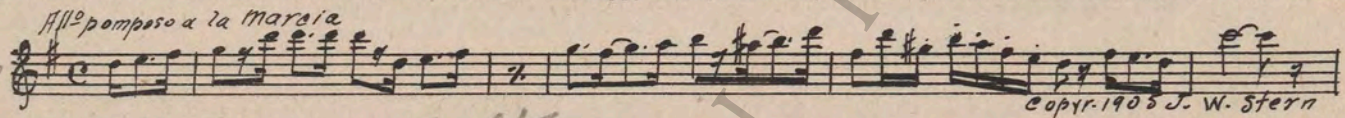


M. J. MINTZ (PATENT)
JULY 31, 1923.

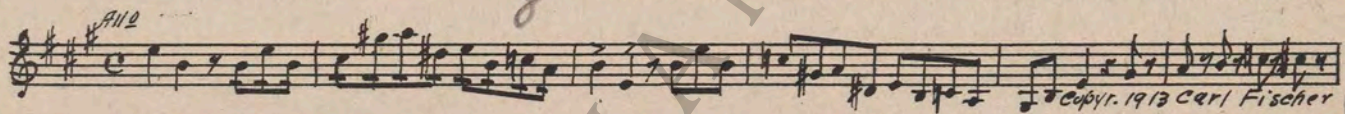
JOSEPH M. SCHENCK
presents
CONSTANCE TALMADGE
in
"THE DUCHESS OF BUFFALO"

Music compiled by James C. Bradford
A FIRST NATIONAL PICTURE

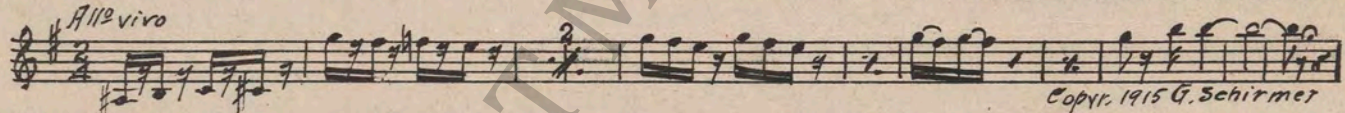
1 AT SCREENING Happyland (DeKoven) 1 Min.



2 (Title) MARION DANCED *waltz* Naila (Delibes) 1½ Min.

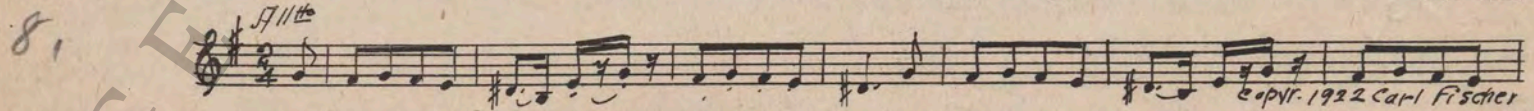


3 (Action) CAVEMAN APPEARS FROM REAR Ballet Music from "Faust" No. 7 (Gounod) 2 Min.

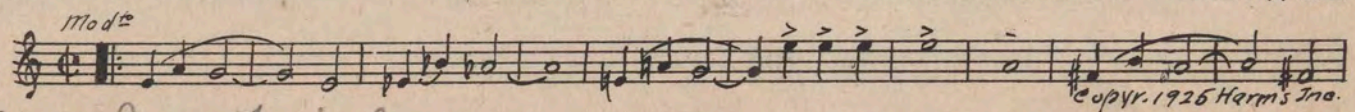


4 (Action) CURTAINS CLOSE Valse of the Hours from "Coppelia" (Delibes) ½ Min.

5 (Action) MISS MARION DUNCAN Humoresque (Tschaikowsky) 3 Min.



9 (Action) ORLOFF OPENS WINDOW Sugar Plum (Meyer) ¾ Min.



- 5. Boo la - Finel
- 6. Theme - Deep in my Heart
- 7. Keep it dark Blossom Time
- 8.

Pao de Fleur

GEORGE EASTMAN MUSEUM

10 (Action) **ORLOFF CLOSSES WINDOW** Tell Me More (Gershwin) ¾ Min.

Mod^{to}
Musical notation for 'ORLOFF CLOSSES WINDOW' in G major, 2/4 time, marked *Mod^{to}*. The melody consists of eighth and quarter notes.

Copyr. 1925 Harms Inc.

11 (Title) **MARION DUNCAN, THE AMERICAN DANCER** Chatter (Kahn) 1¾ Min.

Al^{ro} rubato
Musical notation for 'MARION DUNCAN, THE AMERICAN DANCER' in G major, 2/4 time, marked *Al^{ro} rubato*. The melody features a mix of eighth and quarter notes.

Copyr. 1926 Sornerman Co

12 (Title) **IN MARION'S APARTMENT** Air de Ballet (Herbert) 2½ Min.

Mod^{to}
Musical notation for 'IN MARION'S APARTMENT' in G major, 2/4 time, marked *Mod^{to}*. The melody is composed of eighth and quarter notes.

Copyr. 1912 G. Schirmer

13 (Action) **MARION HIDES BACK OF SCREEN** Punch and Judy (Herbert) 1 Min.

All^o mod^{to}
Musical notation for 'MARION HIDES BACK OF SCREEN' in G major, 2/4 time, marked *All^o mod^{to}*. The melody uses eighth and quarter notes.

Copyr. 1926 Carl Fischer

14 (Action) **MARION FEELS DUKE'S BEARD** Whispering Flowers (V. Blon) 3 Min.

All^o
Musical notation for 'MARION FEELS DUKE'S BEARD' in G major, 2/4 time, marked *All^o*. The melody includes eighth notes and rests.

Copyr. 1922 Carl Fischer

15 (Title) **LIEUTENANT ORLOFF HAS BEEN DETAINED** Ombres d'Automne (Mayne) 3 Min.

And^{te}
Musical notation for 'LIEUTENANT ORLOFF HAS BEEN DETAINED' in G major, 2/4 time, marked *And^{te}*. The melody is slower, using quarter and eighth notes.

Copyr. 1904 Bosworth & Co

16 (Action) **GRAND DUKE DRIVES AWAY** All Alone (Berlin) ½ Min.

Valse
Musical notation for 'GRAND DUKE DRIVES AWAY' in G major, 3/4 time, marked *Valse*. The melody consists of quarter and eighth notes.

Copyr. 1924 Irving Berlin

19 (Action) **INSERT—THE MANAGER** Danza Siberiana (Nicotra) 1¼ Min.

All^o
Musical notation for 'INSERT—THE MANAGER' in G major, 2/4 time, marked *All^o*. The melody features eighth and quarter notes.

Copyr. 1906 Witmark & Son

Copyr. 1925 G. Schirmer

20 (Action) **RAILROAD STATION—MARION APPEARS** Moon-Marketing (Weaver) 2¾ Min.


All^o
Musical notation for 'RAILROAD STATION—MARION APPEARS' in G major, 2/4 time, marked *All^o*. The melody uses quarter and eighth notes.

Copyr. 1926 G. Schirmer

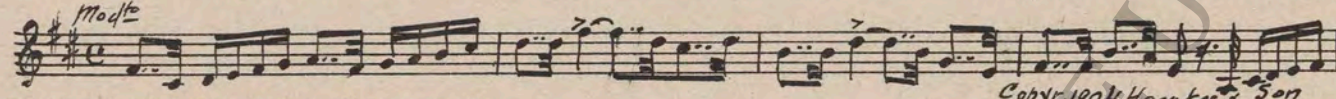
GEORGE EASTMAN

Russian 2/4

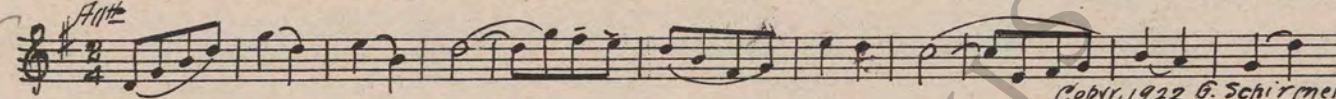
21 (Action) HOTEL—BELL RINGS Fete du Hameau (Gillet) 2 Min.

Animato

NOTE: Drummer catch bell ringing.
Copyright 1895 P. Decourcelle


22 (Action) MARION AND ORLOFF ENTER HOTEL Fame and Glory (Matt) 2½ Min.

Mod^{to}

Copyright 1904 Hawkes & Son

23 (Action) PROPRIETOR LEAVES MARION AND ORLOFF IN BOUDOIR Romance sans Paroles (Davidoff) 2½ Min.

All^{te}

Copyright 1922 G. Schirmer

24 (Action) OFFICERS ENTER INN Frivolous Patrol (Goublier) 1½ Min.

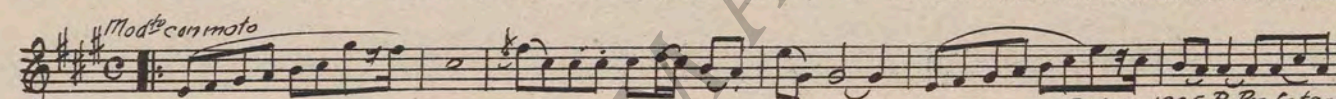
Marcia

Copyright 1918 G. Schirmer

25 (Action) OFFICER CONFRONTS ORLOFF Nature's Awakening (Kempinski) 2 Min.

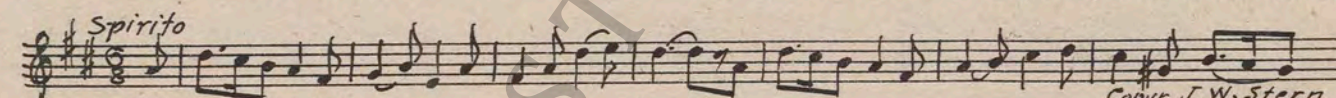
Adagio

Copyright 1922 Photoplay Mfg Co

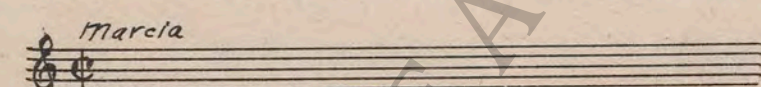
26 (Action) MARION APPEARS IN HALLWAY Ave Aprile (Culotta) 1 Min.

Mod^{to} con moto

Copyright 1925 R. Profeta & Co

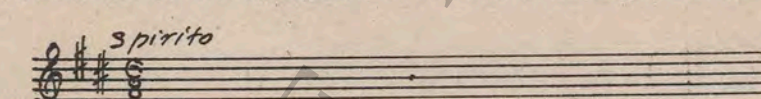
27 (Title) SOME DRAGOON GOT THE IDEA The Prince of Good Fellows from "Happyland" (DeKoven) 1¼ Min.

Spirito

Copyright J. W. Stern

28 (Action) GRAND DUKE ENTERS Repeat Theme No. 17 1 Min.

Marcia


29 (Action) FLASH-BACK TO BANQUET Repeat No. 27 "The Prince of Good Fellows" ¾ Min.

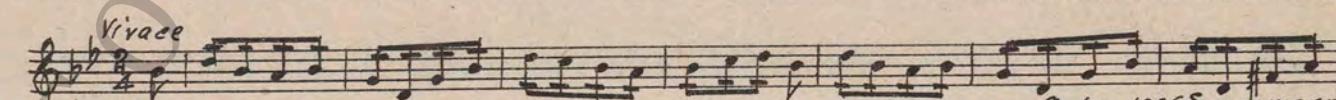
Spirito


30 (Title) HIS IMPERIAL HIGHNESS Czardas from "Ballet Russe" (Luigini) 1¾ Min.

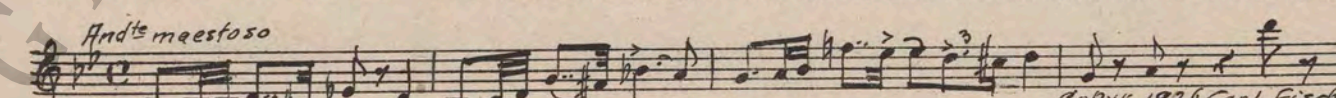
All^{te} mod^{to}

Copyright 1913 Carl Fischer

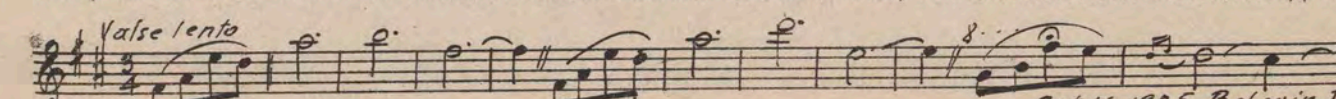
31 (Action) OFFICERS TAKE SEATS Elopement (Carrozzini) 1 Min.

Vivace

Copyright 1926 Sonnemann Mfg Co

32 (Title) YOUR HIGHNESS HAS BEEN VERY KIND... Karma (Herbert) 3 Min.

And^{te} maestoso

Copyright 1926 Carl Fischer

33 (Title) SHE'S GONE Whimsical Charms (Fresco) 1¾ Min.

Valse lento

Copyright 1925 Belwin Inc

34 (Title) WHO'S IN THAT ROOM Wotan (Fietter) 1 Min.

Andte maestoso
 Musical notation for 'Who's in that room' in G major, 2/4 time, starting with a treble clef and a key signature of one sharp. The piece is marked 'Andte maestoso' and has a copyright notice for 1922 by S. Albert.

35 (Title) I'LL CLOSE THE BEDROOM DOOR So That's the Kind of a Girl You Are (Rose) 1 3/4 Min.

Modte
 Musical notation for 'I'll close the bedroom door' in G major, 2/4 time, starting with a treble clef. The piece is marked 'Modte' and has a copyright notice for 1925 by Irving Berlin.

36 (Action) ORLOFF STANDING IN DOORWAY Babillage (Gillet) 3/4 Min.

Allo
 Musical notation for 'Orloff standing in doorway' in G major, 2/4 time, starting with a treble clef. The piece is marked 'Allo' and has a copyright notice for 1889 by Carl Fischer.

37 (Action) TELEPHONE RINGS Moto Perpetuo (Weiss) 2 1/2 Min.

Allo
 Musical notation for 'Telephone rings' in G major, 2/4 time, starting with a treble clef. The piece is marked 'Allo' and has a copyright notice for 1924 by Geo. H. Sanders.

38 (Title) WHERE IS MY HUSBAND Threatening Elements (Schad) 2 1/2 Min.

Modte con moto
 Musical notation for 'Where is my husband' in G major, 2/4 time, starting with a treble clef. The piece is marked 'Modte con moto' and has a copyright notice for 1926 by Geo. H. Sanders.

39 (Action) ORLOFF APPEARS FROM CABINET Chianti (Friml) 2 1/2 Min.

Allo
 Musical notation for 'Orloff appears from cabinet' in G major, 2/4 time, starting with a treble clef. The piece is marked 'Allo' and has a copyright notice for 1918 by G. Schirmer.

40 (Action) GRAND DUKE OUT OF CABINET March Burlesque (Gillet) 3/4 Min.

Marcia
 Musical notation for 'Grand Duke out of cabinet' in G major, 2/4 time, starting with a bass clef. The piece is marked 'Marcia' and has a copyright notice for 1910 by Enoch Co.

41 (Action) GRAND DUKE CONFRONTS SOLDIERS IN HALLWAY Repeat Theme No. 17 1/2 Min.

Marcia
 Musical notation for 'Grand Duke confronts soldiers in hallway' in G major, 2/4 time, starting with a bass clef. The piece is marked 'Marcia' and consists of a few notes on a five-line staff.

42 (Action) KNOCK AT DOOR—GRAND DUKE ENTERS.. Valse Celebre (Moszkowski) 1 1/2 Min.

Valse
 Musical notation for 'Knock at door—Grand Duke enters' in G major, 3/4 time, starting with a treble clef. The piece is marked 'Valse' and has a copyright notice for 1924 by G. Schirmer.

43 (Title) THE ONLY THING THAT CAN SAVE THEM IS Gossip (Borch) 1 Min.

Allo
 Musical notation for 'The only thing that can save them is' in G major, 2/4 time, starting with a treble clef. The piece is marked 'Allo' and has a copyright notice for 1925 by Belwin Inc.

44 (Action) ORLOFF OPENS DOOR—SOLDIERS ON GUARD Recitative Heroique (Rapee) 1 Min.

Grave
 Musical notation for 'Orloff opens door—soldiers on guard' in G major, 2/4 time, starting with a treble clef. The piece is marked 'Grave' and has a copyright notice for 1926 by Belwin.

45 (Title) ARE YOU READY TO OBEY Bridal Chorus (Wagner) 3/4 Min.

Modte
 Musical notation for 'Are you ready to obey' in G major, 2/4 time, starting with a treble clef. The piece is marked 'Modte' and has a copyright notice for 1911 by Em. Ascher.

Printed in U. S. A.

THE END

Complete orchestrations and single piano parts of each separate number contained hereon, can be purchased from CAMEO MUSIC SERVICE CORPORATION, 315-317 West 47th Street, New York City.

95:1758:1