

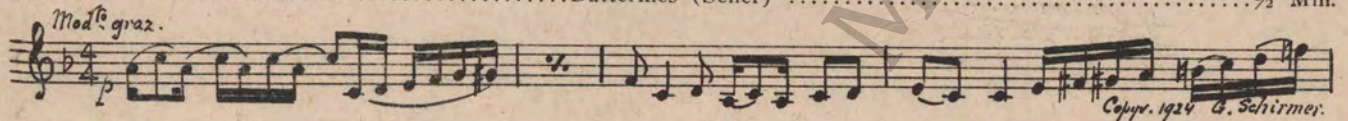
404

Thursday
Friday

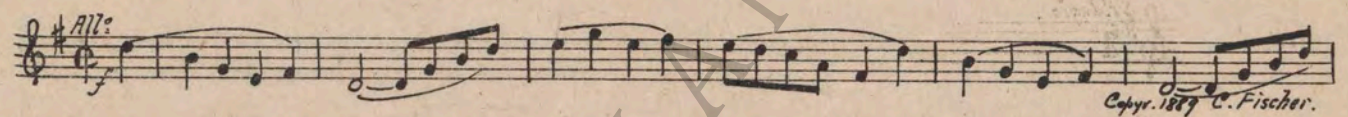


JOHN McCORMICK
presents
COLLEEN MOORE
in
"ELLA CINDERS"
Music compiled by James C. Bradford
A FIRST NATIONAL PICTURE

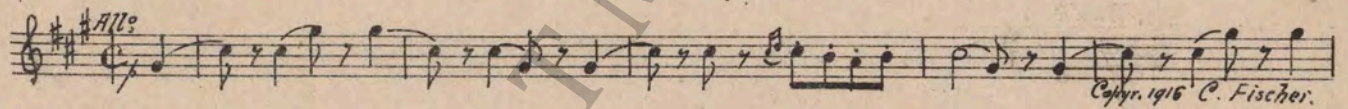
1 AT SCREENING Butterflies (Seiler) 1/2 Min.



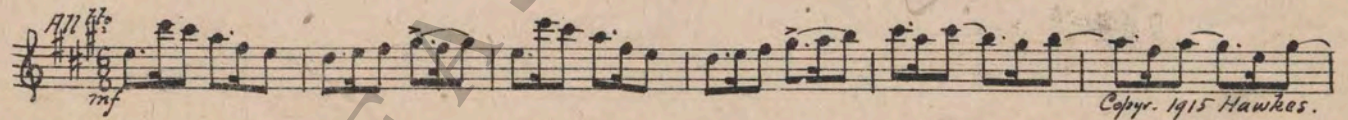
2 (Action) FADE-IN PICTURE Babillage (Gillet) 2 1/2 Min.



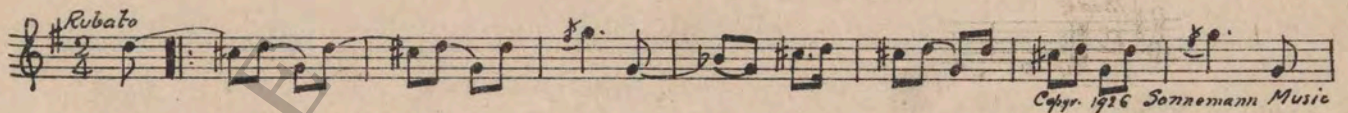
3 (Title) MA'S FIRST HUSBAND HAD BEEN Passepied (Delibes) 1 1/2 Min.



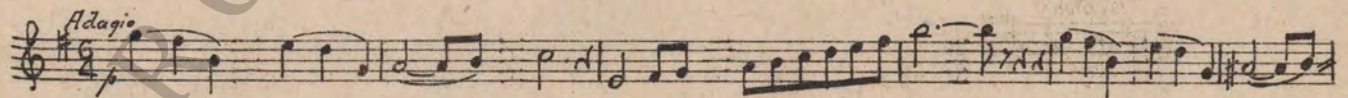
4 (Title) WAIT LIFTER A Summer's Morn (Haines) 1 1/4 Min.



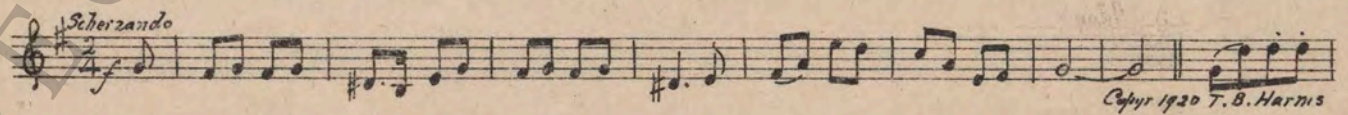
5 (Action) AUNT SCOLDING ELLA Chatter (Kahn) 1 1/4 Min.



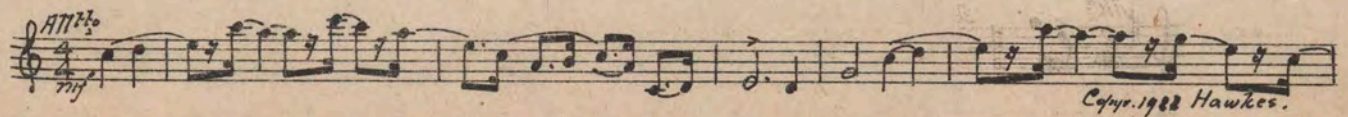
6 (Action) AUNT LEAVES ELLA ELLA THEME: The Swan (St. Saens) 1 1/2 Min.



7 (Title) EVERY SECOND THURSDAY Chatter Box (Silvers) 2 1/4 Min.



8 (Action) ELLA ALONE IN KITCHEN—VISION Fleurette d'Amour (Fletcher) 1 Min.



9 (Title) IN THAT CONTEST LAY A WAY OUT Second Misterioso a la Valse (Savino) ¾ Min.

Sheet music for item 9, featuring a treble clef, a key signature of one sharp (F#), and a 2/4 time signature. The tempo marking is *All^{to} Mod^{to}*. The music consists of a single melodic line with various rhythmic patterns. Copyright notice: *Copyr. 1925 Robbins-Engel.*

10 (Title) THE GREAT REQUISITE TO STARDOM Cupid's Conquest (Kahn) 1½ Min.

Sheet music for item 10, featuring a treble clef, a key signature of one sharp (F#), and a 2/4 time signature. The tempo marking is *All^{to} giocoso*. The music consists of a single melodic line. Copyright notice: *Copyr. 1922 Balwin.*

11 (Title) THOSE PHOTOS COST Poupee Valsante (Poldini) 1¼ Min.

Sheet music for item 11, featuring a treble clef, a key signature of one sharp (F#), and a 3/8 time signature. The tempo marking is *Valse*. The music consists of a single melodic line. Copyright notice: *Copyr. 1908 C. Fischer.*

12 (Title) WHEN ELLA GOT INTO HER CLOTHES En Chevauchant (Gillet) 3¾ Min.

Sheet music for item 12, featuring a treble clef, a key signature of one sharp (F#), and a 6/8 time signature. The tempo marking is *All^o ma non troppo*. The music consists of a single melodic line. Copyright notice: *Copyr. 1922 P. Decourcelle*

13 (Title) THE NIGHT OF THE BALL Repeat Ella Theme No. 6 1¾ Min.

Sheet music for item 13, featuring a treble clef, a key signature of one sharp (F#), and a 2/4 time signature. The tempo marking is *Adagio*. The music consists of a single melodic line. Copyright notice: *Copyr. 1922 P. Decourcelle*

14 (Title) WELL ELLA, I'LL TAKE YOU LOVE THEME: No Wonder (Burke) ½ Min.

Sheet music for item 14, featuring a treble clef, a key signature of one sharp (F#), and a 2/4 time signature. The tempo marking is *Mod^{to}*. The music consists of a single melodic line. Copyright notice: *Copyr. 1924 Leo Feist.*

15 (Title) THE PARTIES OF THE CONTEST Collegiate (Jaffe) ¾ Min.

Sheet music for item 15, featuring a treble clef, a key signature of one sharp (F#), and a 2/4 time signature. The tempo marking is *Mod^{to}*. The music consists of a single melodic line. Copyright notice: *Copyr. 1925 Shapiro-Berstein Co*

16 (Action) FLASH-BACK TO ELLA DRESSING I'm Always Chasing Rainbows (Carroll) ¾ Min.

Sheet music for item 16, featuring a treble clef, a key signature of one sharp (F#), and a 2/4 time signature. The tempo marking is *Mod^{to}* and the dynamic marking is *mf*. The music consists of a single melodic line. Copyright notice: *Copyr. 1918 Mc. Carthy-Fischer.*

17 (Action) FLASH-BACK TO BALL March of the Mannikens (Onivas) 3 Min.

Sheet music for item 17, featuring a treble clef, a key signature of one sharp (F#), and a 2/4 time signature. The tempo marking is *All^o Mod^{to}* and the dynamic marking is *mf*. The music consists of a single melodic line. Copyright notice: *Copyr. 1923 Richmond Robbins*

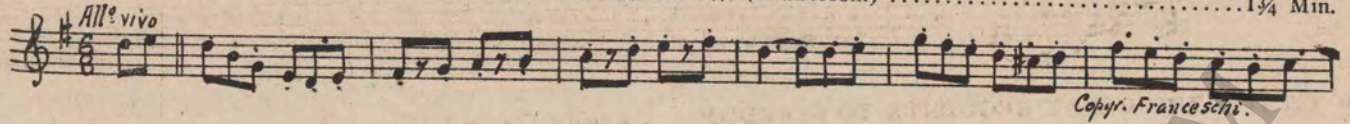
18 (Action) ELLA RUSHES OUT OF HALL Repeat Ella Theme No. 6 1¾ Min.

Sheet music for item 18, featuring a treble clef, a key signature of one sharp (F#), and a 2/4 time signature. The tempo marking is *Adagio*. The music consists of a single melodic line. Copyright notice: *Copyr. 1922 P. Decourcelle*

19 (Action) BAND APPEARS They'll Be a Hot Time (Beyer) 1½ Min.

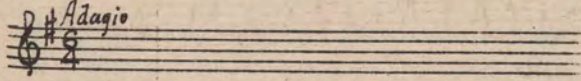
Sheet music for item 19, featuring a treble clef, a key signature of one sharp (F#), and a 2/4 time signature. The tempo marking is *All^o*. The music consists of a single melodic line. Copyright notice: *Copyr. Carl Fischer.*

20 (Title) SHE'S NOT THE ONE A Mon Passage (Franceschi) 1 3/4 Min.

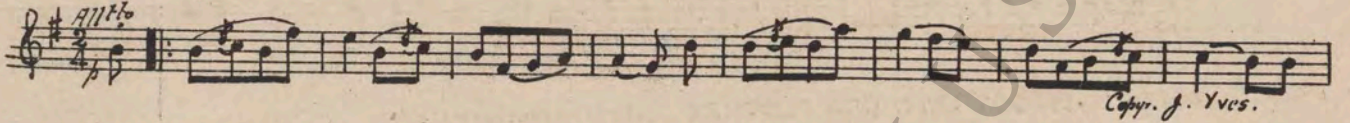


Copyr. Franceschi.

21 (Action) ELLA HANDED PRIZE MONEY AND TICKET. Repeat Ella Theme No. 6 3/4 Min.

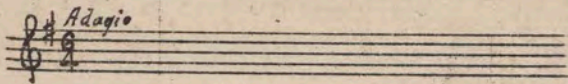


22 (Title) YOU CHEATERS Avril Frileux (Mouton) 1 1/4 Min.

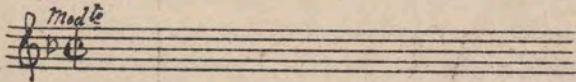


Copyr. J. Yves.

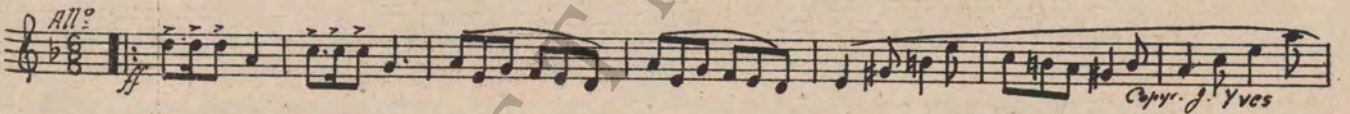
23 (Title) OUTFITTED BY Repeat Ella Theme No. 6 3/4 Min.



24 (Title) A CROWD GATHERED Repeat Love Theme No. 14 1 1/2 Min.

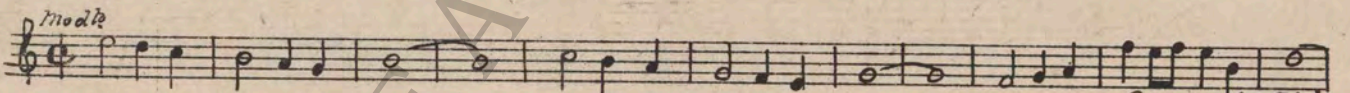


25 (Action) TRAIN APPROACHING Joyeuse Alerte (Fosse) 2 Min.



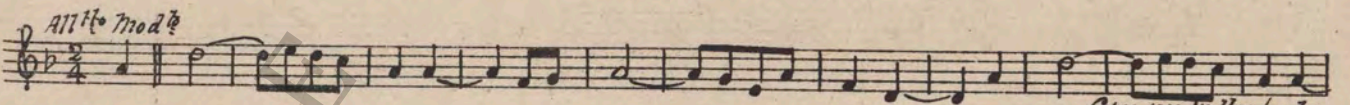
Copyr. J. Yves

26 (Title) AFTER THE STATE OF COLORADO Don't Wake Me Up (Baer) 1/2 Min.



Copyr. 1925 Leo Feist

27 (Action) NOTE: Play very sweetly as a ballad. INDIANS APPEAR AT TRAIN Heap Big Injun (Sawyer) 1 3/4 Min.



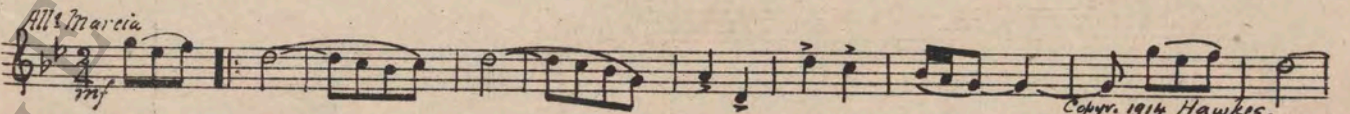
Copyr. 1908 Walter Jacobs

28 (Action) ELLA STARTS TO SMOKE CIGAR Mal de Mer (Lange) 3/4 Min.



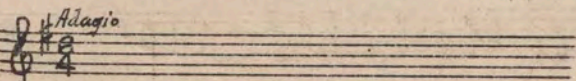
Copyr. 1925 A. Lange

29 (Title) HOLLYWOOD Huetamo (Ancliffe) 1 1/2 Min.



Copyr. 1914 Hawkes.

30 (Title) RESOLVED TO FOLLOW Repeat Ella Theme No. 6 1 1/2 Min.



31 (Title) FOR DAYS ELLA HAUNTED Pavane Recamier (Tellier) 2¼ Min.

All.^o ma non troppo

mf Copyr. 1910 Jos. Stern

32 (Action) OFFICERS PURSUE ELLA Fuga (Gabriel Marie) 2¼ Min.

All.^o vivo

p Copyr. 1918 Ricordi

33 (Action) ELLA IGNITES LION'S TAIL WITH SWITCH BOX Emotional Agitato (Savino) 1½ Min.

All.^o

mf Copyr. 1925 Robbins-Griegel

NOTE: Lion roars ad lib; cymbal roll for flashes of fire.
 34 (Title) I NEVER WORKED IN PICTURES Rapture (Zamecnik) ¾ Min.

Con anima

mf Copyr. 1925 Sam Fox

35 (Title) AN ICEMAN'S HOME Around the Sundial (Castillo) 1¼ Min.

All.^o mod.^o

p Copyr. 1923 Walter Jacobs

36 (Title) BUT TRAGEDY Andantino (Lemare) ½ Min.

Sostenuto

p Copyr. 1924 G. Schirmer

37 (Action) INSERT—NEWSPAPER—OUR ELLA MAKES GOOD Rush Hours (Sanders) 1 Min.

Vivo

p Copyr. 1925 Geo. H. Sanders

38 (Title) THE SCENE FOR ELLA'S NEXT Repeat Ella Theme No. 6 ¾ Min.

Adagio

39 (Action) TRAIN PULLS INTO STATION Fete du Hameau (Gillet) 1½ Min.

Crax & animato

p Copyr. 1895 P. Decourcelle

40 (Title) AND LATER ON Repeat Love Theme No. 14 ¾ Min.

Mod.^o

THE END

Country of Origin, U. S. A.

Complete orchestrations and single piano parts of each separate number contained hereon, can be purchased from CAMEO MUSIC SERVICE CORPORATION, 315-317 West 47th Street, New York City.