

M. J. MINTZ (PATENT)
JULY 31, 1923.

May-17-18-19



THE ENEMY

starring

LILLIAN GISH

with

RALPH FORBES

DIRECTED BY FRED NIBLO

Based on the play by Channing Pollock

Adaptation by Willis Goldbeck

Continuity by Willis Goldbeck and

Agnes Christine Johnston

Compiled by Ernst Luz

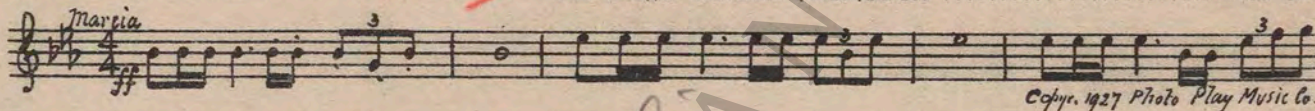


A METRO-GOLDWYN-MAYER PICTURE

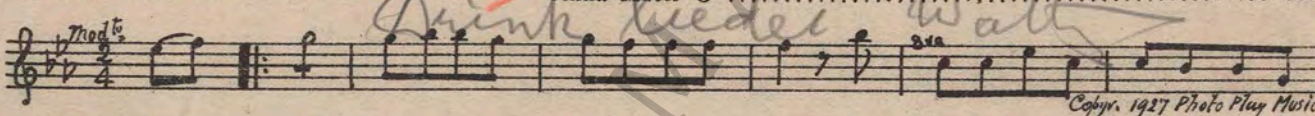
Length of film 9 reels (8170 feet)

Maximum projection time 1 hour, 35 minutes

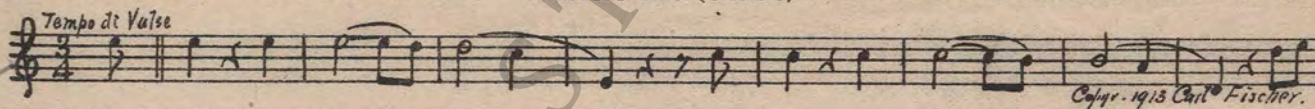
- 1 AT SCREENING The King's Entrance (Marquardt) 55 Sec.

Marcia
ff

Copyright, 1927 Photo Play Music Co.

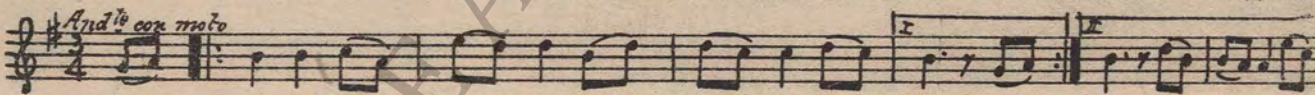
- 2 (Title) OH! WHEN DU ALMA MATER Alma Mater O 35 Sec.

Mod^{to}
Drink Beer, Walt

Copyright, 1927 Photo Play Music Co.

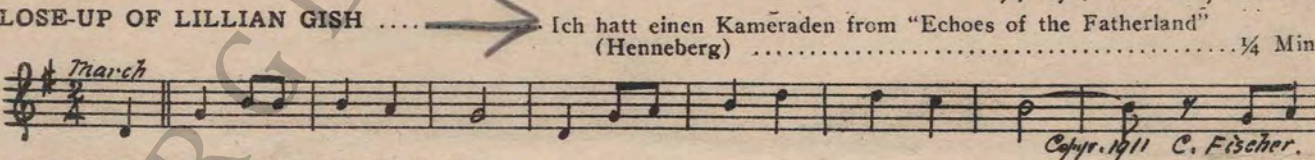
- 3 (Action) NOTE: Play 3 times—slow. END OF SINGING—BOYS DRINK Artist's Life (Strauss) 1 Min.

Tempo di Valse

Copyright, 1913 Carl Fischer.

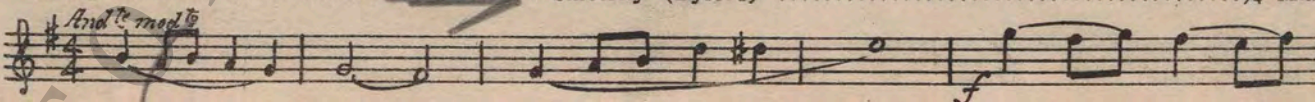
- 4 (Action) NOTE: Play No. 1 only, repeating 2nd strain 3 times. LONG SHOT SHOWING DANCING True Love's Greeting (Luz) ¾ Min.

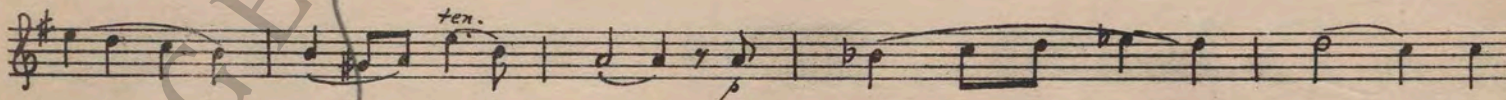
And^{te} con moto


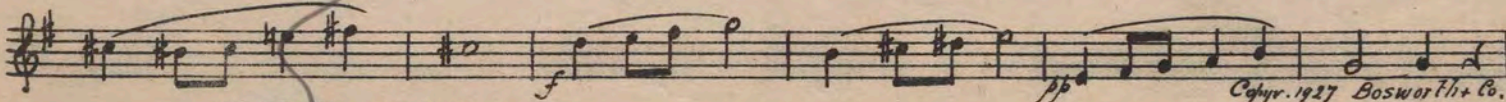
- 5 (Action) CLOSE-UP OF LILLIAN GISH Ich hatt einen Kameraden from "Echoes of the Fatherland" (Henneberg) ¾ Min.

Marc'h

Copyright, 1911 C. Fischer.

- 6 (Action) PROFESSOR ON PLATFORM TO MAKE SPEECH Sincerity (Byford) ¾ Min.

And^{te} mod^{to}


ten.


ff

Copyright, 1927 Bosworth & Co.

NOTE: Play at a lively tempo.

D. End of Moving Scene - Close Up of L. Gish.

7 (Action) END OF MOVING SCENE—CLOSE-UP OF LILLIAN GISH True Love a Greeting (Luz) 3/4 Min.

Musical notation for item 7, starting with *And^{te} con moto*.

Musical notation for item 7, continuing the melody.

Copyr. 1927 Photo Play Music Co.

8 (Action) LILLIAN GISH PUTS FINGER OVER MOUTH Sincerity (Byford) 1/2 Min.

Musical notation for item 8, starting with *And^{te} mod^{to}*.

Musical notation for item 8, continuing the melody.

Musical notation for item 8, continuing the melody.

Copyr. 1927 Bosworth & Co.

9 (Action) END OF PROFESSOR'S SPEECH—BOYS CHEER Muss I denn zum Stadtele (Henneberg) 1/2 Min.

Musical notation for item 9, starting with *Marcia*.

Copyr. 1911 C. Fischer

10 (Action) STUDENTS MARCH ACROSS SCREEN—LILLIAN GISH AT TREE Hidden Love (Marquardt) 1 Min.

Musical notation for item 10, starting with *And^{te}*.

Musical notation for item 10, continuing the melody.

Musical notation for item 10, continuing the melody.

Copyr. 1927 Photo Play Music Co.

11 (Action) THEY HOLD HANDS AFTER TITLE: "CARL IS MY BEST FRIEND" Muss I denn zum Stadtele (Henneberg) 1/4 Min.

Musical notation for item 11, starting with *Marcia*.

Copyr. 1911 C. Fischer.

12 (Action) CARL ON WITH GISH An Old German Love Song (Eckert) 1/2 Min.

Musical notation for item 12, starting with *And^{te} mod^{to}*.

Musical notation for item 12, continuing the melody.

Copyr. 1927 Photo Play Music Co.

13 (Action) CARL AND GISH ON SWING (START WITH FIRST SHOVE OF SWING) Swing Song (Barns) 3/4 Min.

Musical notation for item 13, starting with *All^{to} grazioso*.

Copyr. 1910 C. Fischer.

14 (Action) LOVERS TWICE HIGH IN SWING AFTER ENGLISH BOY CLOSE-UP Drum Solo—March Tempo 1/4 Min.

15 (Action) CHILDREN MARCH ACROSS SCREEN An Old German Love Song (Eckert) 1/4 Min.

Musical notation for item 15, starting with *And^{te}*.

Copyr. 1927 Photo Play Music Co.

T-1.5

16 (Action) STUDENTS WALK FROM SWING AND LOVERS An Old German Love Song (Eckert) 1/2 Min.

And^{te} mod^{to}

Copyr. 1927 Photo Play Mus. Co

NOTE: Play first 4 bars and cut to letter (C).
17 (Action) FADE-OUT OF LOVERS ON SWING Symphonic Incidentals No. 12 (Marquardt) 3/4 Min.

Mod^{to}

Copyr. 1927 Music Buyers Corp

NOTE: Omit first 8 bars and play to letter (B).
18 (Action) AFTER ONE HALF FADE OF PRINTING MACHINERY The Hohenfreidberger (der Grosse) 1/2 Min.

Marcia

Emil Ascher

NOTE: Play to trio without repeats.
19 (Action) INTERIOR SCENE—MAID AND GISH COOKING Frivolous Cupids (Schoenfeld) 1 Min.

F^{al}to
Glitzing Butterflies

Copyr. 1930 Photo Play Mus. Co

NOTE: Play strain in G major 1 1/2 times.
20 (Action) CARL ENTERS HOUSE An Old German Love Song (Eckert) 3/4 Min.

And^{te}

Copyr. 1927 Photo Play Music Co

21 (Action) CARL LOOKS AROUND Frivolous Cupids (Schoenfeld) 3/4 Min.

Mod^{to}

Copyr. 1920 Photo Play M. Co

NOTE: Begin at Moderato in introduction and play to Bb strain.
22 (Action) KARL DANE AT KITCHEN TABLE Frivolous Cupids (Schoenfeld) 1/2 Min.

F^{al}to

Copyr. 1920 Photo Play M. Co

NOTE: Play entire introduction.
23 (Action) KARL DANE PATS STOMACH AT END OF KITCHEN SCENE An Old German Love Song (Eckert) 3/4 Min.

And^{te} mod^{to}

Copyr. 1927 Photo Play Mus. Co

NOTE: Play introduction only.
24 (Action) AFTER TWO SUBTITLES The Wooden Soldiers' Tournament (Marquardt) 1/2 Min.

Marcia mod^{to}

Copyr. 1927 Music Buyers Corp

NOTE: Play 28 bars and make direct segue.
25 (Action) CLOSE-UP OF PARROT IN CAGE War Acclaim 1/4 Min.

Marcia

Copyr. 1927 Photo Play Mus. Co

NOTE: Play 8 bars only.
26 (Title) HURRAH FOR THE GLORY OF WAR The Wooden Soldiers' Tournament (Marquardt) 1 1/4 Min.

Marcia mod^{to}

Copyr. 1927 Music Buyers Corp

"Your Teacher Was a Fool"

27 (Title) YOUR TEACHER WAS A FOOL ... Frivolous Cupids (Schoenfeld) 2 3/4 Min.

Musical notation for 'YOUR TEACHER WAS A FOOL' with tempo marking 'Allegro' and copyright 'Copyr. 1920 Photo Play Mus. Co'.

28 (Action) CHILD EATING TURKEY LEG— CLOSE-UP OF LOVERS An Old German Love Song (Eckert) 1/4 Min.

Musical notation for 'CHILD EATING TURKEY LEG' with tempo marking 'And.te mod.to' and copyright 'Copyr. 1927 Photo Play Mus. Co'.

29 (Action) LOVERS DRINK The Wooden Soldiers' Tournament (Marquardt) 1/2 Min.

Musical notation for 'LOVERS DRINK' with tempo marking 'Marcia mod.to' and copyright 'Copyr. 1927 Music Buyers Corp'.

30 (Action) LOVERS SHOW AFTER TITLE: "PUFF, LUDWIG, PUFF" An Old German Love Song (Eckert) 3/4 Min.

Musical notation for 'LOVERS SHOW AFTER TITLE' with tempo marking 'And.te mod.to'.

Th. (1)

Musical notation for 'LOVERS SHOW AFTER TITLE' continuation with copyright 'Copyr. 1927 Photo Play Mus. Co'.

31 (Action) NOTE: Play from letter (A) to (B). CLOSE-UP OF CARL'S FATHER Symphonic Incidentals No. 12 (Marquardt) 2 3/4 Min.

Musical notation for 'CLOSE-UP OF CARL'S FATHER' with tempo marking 'Mod.to' and copyright 'Copyr. 1927 Music Buyers Corp'.

The (2)

32 (Action) CHILD EATING CAKE—PARADE SCENE Nibelungen March (Wagner) 1/4 Min.

Musical notation for 'CHILD EATING CAKE' with tempo marking 'Marcia' and copyright 'Copyr. 1891 Carl Fischer'.

33 (Action) ONE PARADE SCENE Hidden Love (Marquardt) 3/4 Min.

Musical notation for 'ONE PARADE SCENE' with tempo marking 'And.te' and copyright 'Copyr. 1927 Photo Play Mus. Co'.

34 (Action) FADE-OUT OF GISH AND CARL Nibelungen March (Wagner) 1/4 Min.

Musical notation for 'FADE-OUT OF GISH AND CARL' with tempo marking 'Marcia' and copyright 'Copyr. 1891 Carl Fischer'.

35 (Action) NOTE: Play 8 bars before Trio and 1st strain of Trio. FADE-OUT OF SOLDIERS COMING UNDER ARCH Bridal Chorus from "Lohengrin" (Wagner) (Organ Alone) 1 Min.

Musical notation for 'FADE-OUT OF SOLDIERS COMING' with tempo marking 'Mod.to' and copyright 'Copyr. 1911 Emil Fischer'.

Organ

36 (Action) THIRD CLOSE-UP OF ORGANIST War Acclaim 3/4 Min.

Musical notation for 'THIRD CLOSE-UP OF ORGANIST' with tempo marking 'Marcia' and copyright 'Copyr. 1927 Photo Play Mus. Co'.

37 (Title) NOTE: Play 3 times—"P"—"MF"—"F." OUR FLAG The King's Entrance (Marquardt) 3/4 Min.

Musical notation for 'OUR FLAG' with tempo marking 'Marcia' and copyright 'Copyr. 1927 Photo Play Mus. Co'.

- 38 (Title) YES, I'VE HEARD IT SAID Drum Solo—March Tempo ¼ Min.
- 39 (Action) MARCHING FEET—LOVERS IN ROOM Frivolous Cupids (Schoenfeld) ½ Min.

Allegro

Copyr. 1920 Photo Play Mus. Co

- 40 (Action) LOVERS CLOSE WINDOW An Old German Love Song (Eckert) ½ Min.

And^{te} mod^{to}

Copyr. 1927 Photo Play Mus. Co

- 41 (Title) AS SOON AS THE WAR IS OVER Cradle Song (Luz) ½ Min.

NOTE: Play from letter (A) to end.

And^{te} con moto

Copyr. 1927 Photo Play Mus. Co

- 42 (Action) FADE FROM CHILDREN BACK TO LOVERS An Old German Love Song (Eckert) ¼ Min.

NOTE: Play twice.

And^{te} mod^{to}

Copyr. 1927 Photo Play Mus. Co

- 43 (Action) DOOR KNOCK—CARL OPENS DOOR Symphonic Incidentals No. 12 (Marquardt) 1 Min.

Mod^{to}

Copyr. 1927 Music Buyers Cor.

- 44 (Title) PAULI, I'M CALLED An Old German Love Song (Eckert) ¼ Min.

NOTE: Play first 12 bars and last 5 bars.

And^{te} mod^{to}

Copyr. 1927 Photo Play Mus. Co

- 45 (Action) FADE-OUT OF LOVERS Drum Solo—March Tempo ¼ Min.
- 46 (Action) ONE MARCHING FEET SCENE An Old German Love Song (Eckert) 1 ¼ Min.

And^{te}

Copyr. 1927 Photo Play Mus. Co

- 47 (Action) UNIFORM LYING ON CHAIR Battle Hurry from "Military Suite" (Luz) 10 Sec.

All^o vivo

Copyr. 1917 Photo Play Music Co

- 48 (Action) FADE-OUT OF ONE BATTLE SCENE TO UNIFORM ON CHAIR Woes of Hidden Love (Luz) ¾ Min.

Largo

Copyr. 1927 Photo Play Music Co

- 49 (Action) GISH DROPS—LOOKS UP War Acclaim ¼ Min.

Marcia

Copyr. 1927 Photo Play Mus. Co

NOTE: Play 1 ½ times; "PP" at interiors—brass muted.

Second Marching Scene

Handwritten notes and markings on the right side of the page, including a large 'V' and some illegible scribbles.

Handwritten notes: 'And^{te} 3/4 Drum.'

Handwritten checkmark on the right side of the page.

50 (Action) SECOND MARCHING SCENE An Old German Love Song (Eckert) 1/2 Min.

Musical notation for item 50. Includes tempo marking *And^{te} mod^{to}* and copyright notice *Copyr. 1927 Photo Play Mus. Co*.

51 (Action) LILLIAN GISH COMES FROM BEDROOM TO WINDOW Farewell (Luz) 1 Min.

Musical notation for item 51. Includes tempo marking *And^{te}* and copyright notice *Copyr. 1927 Photo Play Mus. Co*. A red circle with the number '2' is written next to the title.

52 (Action) CLOCK ON SCREEN An Old German Love Song (Eckert) 1 1/4 Min.

Musical notation for item 52. Includes tempo marking *And^{te} mod^{to}* and copyright notice *Copyr. 1927 Photo Play Music Co*. A red arrow points to the title.

Musical notation for item 52, continuing from the previous block.

53 (Title) BUTTON, BUTTON Drum Solo—March Tempo 1/4 Min.
54 (Action) ONE MARCHING FEET SCENE Symphonic Incidentals No. 12 (Marquardt) 3/4 Min.

Musical notation for item 54. Includes tempo marking *Mod^{to}* and copyright notice *Copyr. 1927 Music Buyers Corp.*. A red arrow points to the title.

35 (Action) CARL DROPS HEAD INTO WIFE'S LAP An Old German Love Song (Marquardt) 1/4 Min.

Musical notation for item 35. Includes tempo marking *And^{te}* and copyright notice *Copyr. 1927 Photo Play Mus. Co*. A red circle with the number '1' is written next to the title.

56 (Action) SERVANT LEAVES WITH BAG An Old German Love Song (Eckert) 3/4 Min.

Musical notation for item 56. Includes tempo marking *And^{te} mod^{to}* and copyright notice *Copyr. 1927 Photo Play Music Co*.

Musical notation for item 56, continuing from the previous block.

57 (Action) LOVERS KISS War Acclaim 1/4 Min.

Musical notation for item 57. Includes tempo marking *Marcia* and copyright notice *Copyr. 1927 Photo Play Music Co*. A red circle with the number '1' is written next to the title.

58 (Action) GISH RUNS TO WINDOW Nibelungen March (Wagner) 1/4 Min.

Musical notation for item 58. Includes tempo marking *Marcia* and copyright notice *Copyr. 1891 Carl Fischer*. A red circle with the number '1' is written next to the title.

59 (Action) GISH MOVES FROM WINDOW AFTER SOLDIERS PASS An Old German Love Song (Eckert) 1/4 Min.

Musical notation for item 59. Includes tempo marking *And^{te}* and copyright notice *Copyr. 1927 Photo Play Mus. Co*.

60 (Action) FADE-OUT AFTER LILLIAN GISH FALLS TO FLOOR March of the Europeans (Marquardt) 1/4 Min.

Musical notation for item 60. Includes tempo marking *Marcia* and copyright notice *Copyr. 1927 Photo Play Music Co*.

Handwritten notes: "Th. 2" and "Th. 1" with circled numbers.

Handwritten notes: "Drum Solo" and "Hoch Habsburg" with arrows pointing to specific items.

Handwritten note: "Letter A" with an arrow pointing to a specific note in the music.

61 (Title) ALL THINKING War Acclaim ¼ Min.

Musical notation for item 61, marked *Marcia*. Includes handwritten "Drum Solo" above the staff.

NOTE: Play 16 bars.

62 (Action) FADE-OUT AFTER MARCHING FEET Symphonic Incidentals No. 12 (Marquardt) ½ Min.

Musical notation for item 62, marked *Mod^{to}*. Includes handwritten "2" in a circle to the left.

NOTE: No. 62 covers trench scenes that may be out of film.

63 (Action) MUNICIPAL BREAD LINE SIGN The Atlas (Schubert) ½ Min.

Musical notation for item 63, marked *All^o mod^{to}*.

NOTE: Play first 12 bars—slow.

64 (Action) CLOSE-UP OF OLD WOMAN AS SHE GETS BREAD Drum Solo—March Tempo ¼ Min.

65 (Action) FADE FROM SHORT MARCHING FEET SCENE TO MAID STIRRING SOUP An Old German Love Song (Eckert) 1¼ Min.

Musical notation for item 65, marked *And^{te} mod^{to}*.

NOTE: Begin at letter (A)—play to end.

66 (Action) MAID IN KITCHEN TAKES BREAD OUT OF BOX The Wooden Soldiers' Tournament (Marquardt) ¾ Min.

Musical notation for item 66, marked *Marcia mod^{to}*. Includes handwritten "March Marche" above the staff.

67 (Action) GISH OPENS DOOR AFTER TITLE: "I'M ALWAYS HUNGRY NOW" Woes of Hidden Love (Luz) ¾ Min.

Musical notation for item 67, marked *Largo*. Includes handwritten "Vienna Melody" above the staff.

68 (Action) FADE-OUT OF BOY EATING Symphonic Incidentals No. 12 (Marquardt) ¾ Min.

Musical notation for item 68, marked *Mod^{to}*.

NOTE: Begin at letter (D)—repeat 8 bars.

69 (Action) STUDENT SOLDIERS LEAVE ROOM Play last 5 bars of No. 68—very slow ¾ Min.

70 (Action) END OF COLLEGE SCENE—FADE TO CUTTING BREAD Woes of Hidden Love (Luz) ½ Min.

Musical notation for item 70, marked *Largo*.

71 (Action) PLAY EIGHT BARS AND SEGUE Maiden's Lament (Luz) 1¼ Min.

Musical notation for item 71, marked *Adagio*. Includes handwritten "3" in a circle to the left.

72 (Action) CLOSE-UP OF PARROT War Acclaim ¼ Min.

Musical notation for item 72, marked *Marcia*. Includes handwritten "Drum Solo" above the staff.

NOTE: Play 8 bars.

73 (Title) HURRAH FOR THE GLORY OF WAR Hidden Love (Marquardt) 1 Min.

Musical notation for item 73, marked *And^{te}*.

NOTE: Play first 8 bars, then cut to letter (G).

Handwritten note at the bottom: "Wages or no Wages" (Embrace)

74 (Action) LILLIAN GISH AND MAID EMBRACE AFTER TITLE: "WAGES OR NO WAGES" The Atlas (Schubert) 1 1/2 Min.

Musical notation for item 74. Includes tempo marking *All^o mod^{to}* and handwritten note *Heavy Descend*. Copyright: Copyr. 1927 Photo Play Mus. Co.

75 (Title) THAT'S WAR Symphonic Incidentals No. 12 (Marquardt) 1 1/2 Min.

Musical notation for item 75. Includes tempo marking *Mod^{to}* and a circled number **2**. Copyright: Copyr. 1927 Music Buyers Cor.

76 (Action) FADE-OUT OF GISH AND FATHER AFTER TITLE: TRAITORS Drum Solo—March Tempo 1/4 Min.

77 (Action) ONE MARCHING FEET SCENE Wien bleibt Wien (Schrammel) 3/4 Min.

Musical notation for item 77. Includes tempo marking *Marcia* and handwritten note *Heavy Descend*. Copyright: Copyr. 1911 Emil Ascher

78 (Action) CARL RAPS ON DOOR OF HOME AFTER FADE-OUT OF SOLDIERS AT STATION. Short Tacet

79 (Action) CARL OPENS DOOR Woes of Hidden Love (Luz) 1 Min.

Musical notation for item 79. Includes tempo marking *Fargo* and a circled number **4**. Copyright: Copyr. 1927 Photo Play Mus. Co.

80 (Title) THEY WERE TRAITORS Incid. Symphony No. 35 (Kempinski) 3/4 Min.

Musical notation for item 80. Includes tempo marking *All^o mod^{to}* and handwritten note *Heavy Descend*. Copyright: Copyr. 1927 Photo Play Mus. Co.

81 (Action) STREET SIGN NO. 77 ON SCREEN Woes of Hidden Love (Luz) 3/4 Min.

Musical notation for item 81. Includes tempo marking *Fargo* and a circled number **4**. Copyright: Copyr. 1927 Photo Play Mus. Co.

82 (Action) AUTO WITH CARL STOPS AT HOUSE Frivolous Cupids (Schoenfeld) 1/2 Min.

Musical notation for item 82. Includes tempo marking *All^o* and a circled number **2**. Copyright: Copyr. 1920 Photo Play Mus. Co.

83 (Title) WHERE'S PAULI Symphonic Incidentals No. 12 (Marquardt) 1 Min.

Musical notation for item 83. Includes tempo marking *Mod^{to}* and a circled number **2**. Copyright: Copyr. 1927 Music Buyers Cor.

84 (Title) YOU SAFE War Acclaim 1/4 Min.

Musical notation for item 84. Includes tempo marking *Marcia* and a circled number **2**. Copyright: Copyr. 1927 Photo Play Music Co.

85 (Action) ONE MARCHING SCENE Symphonic Incidentals No. 12 (Marquardt) 1/2 Min.

Musical notation for item 85. Includes tempo marking *Mod^{to}* and a circled number **2**. Copyright: Copyr. 1927 Music Buyers Corp.

86 (Action) FADE-OUT OF CARL AND FATHER Lamentation (Bortkiewicz) 1 1/2 Min.

Musical notation for item 86. Includes tempo marking *And^{te}* and handwritten note *he here*. Copyright: Copyr. 1927 Emil Ascher

NOTE: Crescendo 1 bar before 4/4.

87 (Action) MAID SAVES EGG ON TABLE Sincerity (Byford) 3/4 Min.

Andte modto

f

Copyr. 1927 Bosworth & Co

88 (Action) FADE-OUT OF SIGN "WASHERWOMAN WANTED" Incid. Symphony No. 35 (Kempinski) 1/2 Min.

All modto

Copyr. 1927 Photo Play M. Co

89 (Action) LILLIAN GISH AT LAMP POST Nibelungen March (Wagner) 1 1/2 Min.

Marcia

Copyr. 1891 Carl Fischer

90 (Action) LILLIAN GISH GETS THROUGH GATE Main Street (Lake) 1 Min.

Allto

Copyr. 1927 Carl Fischer

91 (Action) MAN RINGS BELL Incid. Symphony No. 35 (Kempinski) 1/2 Min.

All modto

Copyr. 1927 Photo Play M. Co

92 (Action) CARL PREVENTED FROM LEAVING TRAIN-GISH SHOWS Woes of Hidden Love (Luz) 1 Min.

Largo

Copyr. 1927 Photo Play M. Co

93 (Action) GISH CLOSSES DOOR-PARROT SEEN War Acclaim 1/4 Min.

Marcia

Copyr. 1927 Photo Play M. Co

94 (Title) NOTE: Play 8 bars. HURRAH FOR THE GLORY OF WAR Witty Witch (Finck) 1/2 Min.

Andte modto e mist.

Copyr. 1927 Hawkes & Son

95 (Title) THERE'S STRENGTH IN THIS COUP NOW Drum Solo-March Tempo 1/4 Min.

96 (Action) ONE MARCHING FEET SCENE Cradle Song (Luz) 1/2 Min.

Andte con moto

Copyr. 1927 Photo Play M. Co

97 (Action) CLOSE-UP OF BABY Prelude in "Gobi" (Reiser) 1 1/4 Min.

Lento

Start at no (2)

Copyr. 1927 Carl Fischer

D-Doctor Leaves House

98 (Action) DOCTOR LEAVES HOUSE Maiden's Lament (Luz) 1 Min.

3

Handwritten musical notation for 'DOCTOR LEAVES HOUSE' with tempo marking 'Adagio'. Copyright: 1927 Photo Play Music Co.

99 (Action) DOOR KNOCK—SEGUE AT MITZIE'S ENTRANCE Sibelia Dream (Viola) 1 1/4 Min.

Handwritten musical notation for 'DOOR KNOCK—SEGUE AT MITZIE'S ENTRANCE' with tempo marking 'Lento a capriccio'. Copyright: 1922 Photo Play Music Co.

100 (Action) MITZIE TAKES FUR PIECE FROM NECK ... Cradle Song (Luz) 3/4 Min.

Handwritten musical notation for 'MITZIE TAKES FUR PIECE FROM NECK' with tempo marking 'Andte con moto'. Copyright: 1927 Photo Play Music Co.

101 (Action) GISH OFFERS BABY TO MITZI Sibelia Dream (Viola) 3/4 Min.

Hidden Love

Handwritten musical notation for 'GISH OFFERS BABY TO MITZI' with tempo marking 'Lento a capriccio'. Copyright: 1922 Photo Play Music Co.

102 (Action) MITZI LEAVES HOUSE Cradle Song (Luz) 3/4 Min.

Handwritten musical notation for 'MITZI LEAVES HOUSE' with tempo marking 'Andte con moto'. Copyright: 1927 Photo Play Music Co.

103 (Action) BABY PUT INTO CRADLE Sibelia Dream (Viola) 1 1/2 Min.

Handwritten musical notation for 'BABY PUT INTO CRADLE' with tempo marking 'Lento e a capriccio'. Copyright: 1922 Photo Play Music Co.

104 (Action) GISH WALKS TO CLOTHES CLOSET Gloaming (Kempinski) 1 1/2 Min.

Handwritten musical notation for 'GISH WALKS TO CLOTHES CLOSET' with tempo marking 'Allegro'. Copyright: 1909 Photo Play Music Co.

NOTE: Play introduction and 1st strain. 105 (Action) DRINK BEING POURED FROM BOTTLE Cradle Song (Luz) 3/4 Min.

5

Handwritten musical notation for 'DRINK BEING POURED FROM BOTTLE' with tempo marking 'Andte con moto'. Copyright: 1927 Photo Play Music Co.

106 (Action) FADE-OUT OF LILLIAN GISH AT BABY'S CRADLE Morning Dew (Marquardt) 2 Min.

Handwritten musical notation for 'FADE-OUT OF LILLIAN GISH AT BABY'S CRADLE' with tempo marking 'Andte' and handwritten 'adagio - Mozart'. Copyright: 1927 Music Buyers Corp.

107 (Title) DON'T BE A FOOL Incid. Symphony No. 12 (Kempinski) 3/4 Min.

Handwritten musical notation for 'DON'T BE A FOOL' with tempo marking 'Andte'. Copyright: 1922 Photo Play Music Co.

NOTE: Play 2nd strain only. 108 (Action) TWO SOLDIERS MEET—RUSSIAN HANDS AUSTRIAN CIGARETTES → Ich hatt einen Kameraden (Henneberg) 1/2 Min.

Handwritten musical notation for 'TWO SOLDIERS MEET—RUSSIAN HANDS AUSTRIAN CIGARETTES' with tempo marking 'March'. Copyright: 1911 Carl Fischer.

NOTE: Play once and repeat 8 bars. 109 (Action) EXPLOSION Battle Hurry (Luz) 1/4 Min.

Handwritten musical notation for 'EXPLOSION' with tempo marking 'Alto vivo' and handwritten '48'. Copyright: 1917 Photo Play Music Co.

NOTE: Play 34 bars.

110 (Action) FADE-OUT OF BATTLE SCENES The Atlas (Schubert) 3/4 Min.

Musical notation for item 110. Includes tempo marking *All^o mod^{to}* and copyright notice *Copyr. 1927 Photo Play Mus. Co*. Handwritten note: *Heavy Desc.*

111 (Action) CARL'S FATHER WALKS TO LILLIAN GISH Frivolous Cupids (Schoenfeld) 2 1/4 Min.

Musical notation for item 111. Includes tempo marking *All^o* and copyright notice *Copyr. 1920 Photo Play Mus. Co*.

112 (Title) CARL'S REGIMENT ARRIVES TODAY Sibelia Dream (Viola) 1/4 Min.

Musical notation for item 112. Includes tempo marking *Lento a capriccio* and copyright notice *Copyr. 1922 Photo Play Mus. Co*. Handwritten note: *Gray Day*

113 (Action) LILLIAN GISH GETS UP FROM CHAIR AFTER FATHER NODS Sincerity (Byford) 1/2 Min.

Musical notation for item 113. Includes tempo marking *And^{te} mod^{to}*.

Musical notation for item 113 (continued).

Musical notation for item 113 (continued).

114 (Action) LILLIAN GISH IN ROOM AT BABY'S CRADLE Frivolous Cupids (Schoenfeld) 1 1/2 Min.

Musical notation for item 114. Includes tempo marking *Mod^o* and copyright notice *Copyr. 1920 Photo Play Mus. Co*.

115 (Action) HOLE IN TABLE CLOTH SHOWS Tales From Vienna Woods (Strauss) 1 1/4 Min.

Musical notation for item 115. Includes tempo marking *Lento* and copyright notice *Copyr. 1913 Emil G. Scher*.

116 (Action) LILLIAN GISH SEEN AFTER TITLE: "PUFF, LUDWIG, PUFF" War Acclaim March Miniature 3/4 Min.

Musical notation for item 116. Includes tempo marking *Marcia* and copyright notice *Copyr. 1927 Photo Play Mus. Co*. Handwritten note: *March Miniature*

117 (Action) PROFESSOR OPENS DOOR An Old German Love Song (Eckert) 1/4 Min.

Musical notation for item 117. Includes tempo marking *And^{te}* and copyright notice *Copyr. 1927 Photo Play Mus. Co*.

118 (Action) PLAY SEVEN BARS INTRODUCTION AND SEGUE Eroticon (Mikulicz) 2 1/4 Min.

Musical notation for item 118. Includes tempo marking *All^o* and copyright notice *Copyr. 1927 E.B. Marks Co*.

119 (Action) GISH RE-ENTERS ROOM FROM BEDROOM War Acclaim 1 1/4 Min.

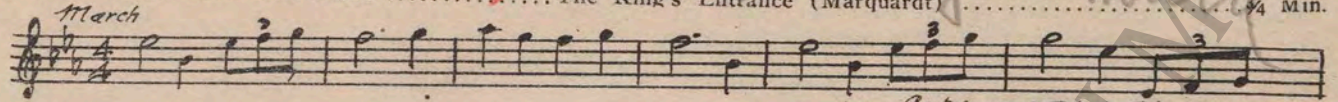
Musical notation for item 119. Includes tempo marking *Marcia* and copyright notice *Copyr. 1927 Photo Play Mus. Co*. Handwritten note: *Drum Solo*

NOTE: Play 5 1/2 times—3 times muted brass to climax, then last 1/2 time "PP" to fade. only and "P", 4th and 5th time, full orchestra crescendo.

D-Fade Out of Lillian Gish

Nibelungen Marsch

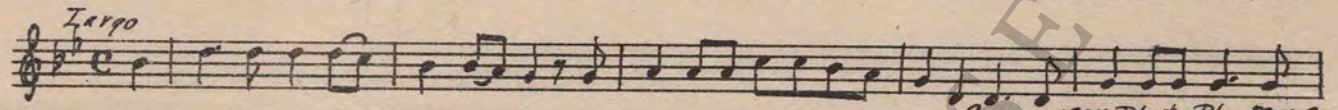
120 (Action) FADE-OUT OF LILLIAN GISH *March* The King's Entrance (Marquardt) ¾ Min.



Copyr. 1927 Photo Play Music Co

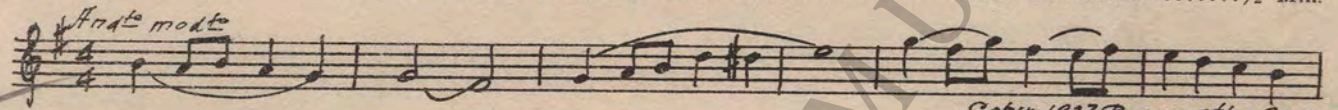
121 (Title) FROM PRISON CAMPS *Zerpo* Woes of Hidden Love (Luz) ½ Min.

4



Copyr. 1927 Photo Play Music Co

122 (Action) FADE-OUT OF RAILROAD STATION SCENE *Andte moder* Sincerity (Byford) ½ Min.



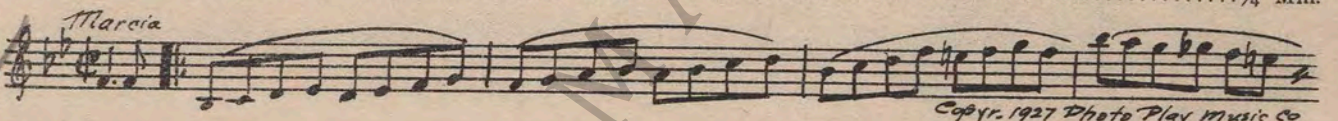
Copyr. 1927 Bosworth & Co

123 (Action) NOTE: Play 8 bars only—lively. STUDENTS CHEER AFTER PROFESSOR'S SPEECH *March* Ich hatt einen Kameraden (Henneberg) ¼ Min.



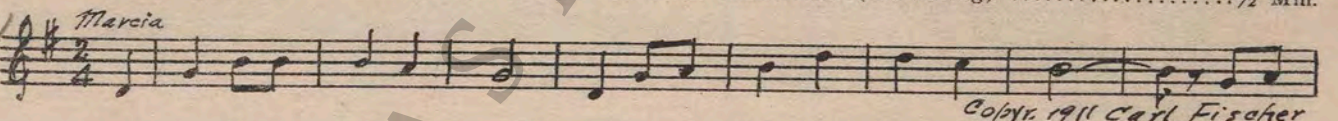
Copyr. 1911 Carl Fischer

124 (Action) NOTE: Play 8 bars only. CHILDREN MARCHING *Marcia* War Acclaim ¼ Min.



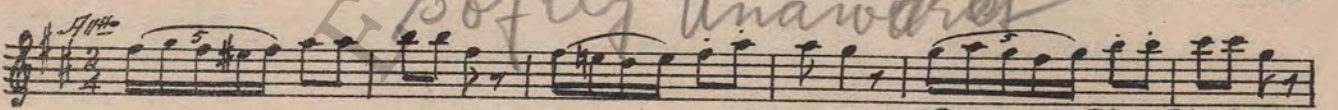
Copyr. 1927 Photo Play Music Co

125 (Action) NOTE: Play 16 bars. END OF CHILDREN SCENE *Marcia* Ich hatt einen Kameraden (Henneberg) ½ Min.



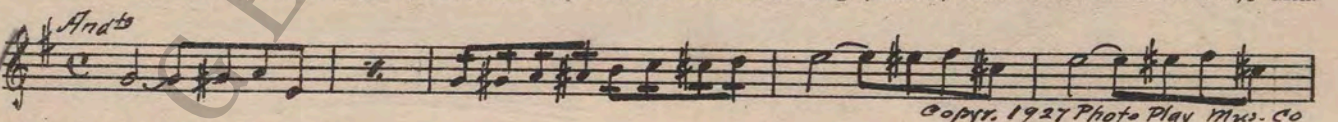
Copyr. 1911 Carl Fischer

126 (Action) FADE-OUT OF TWO FATHERS *Andte* Frivolous Cupids (Schoenfeld) 1½ Min.



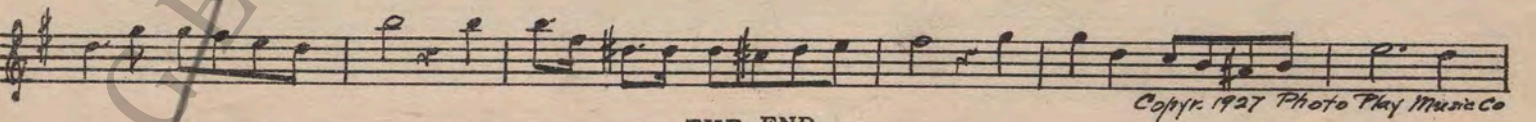
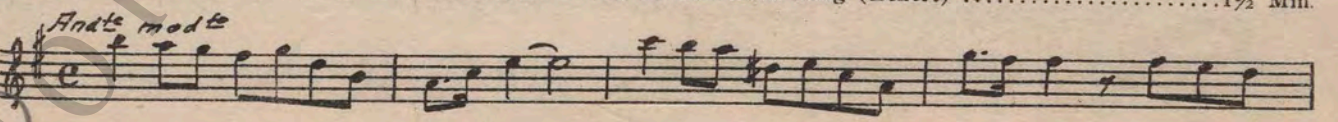
Copyr. 1920 Photo Play Music Co

127 (Action) PROFESSOR OPENS DOOR SECOND TIME—BRUCE, ENGLISH BOY, ENTERS. An Old German Love Song (Eckert) ½ Min.



Copyr. 1927 Photo Play Music Co

128 (Action) LILLIAN GISH LETS PLATES FALL ON FLOOR *Andte moder* An Old German Love Song (Eckert) 1½ Min.



Copyr. 1927 Photo Play Music Co

THE END

Country of Origin, U. S. A.

Complete orchestrations and single piano parts of each separate number contained hereon, can be purchased from CAMEO MUSIC SERVICE CORPORATION, 315-317 WEST 47TH STREET, NEW YORK CITY.

95:1766:1