



M. J. MINTZ (PATENT)  
JULY 31, 1923.

WILLIAM FOX FEATURE FILM PRODUCTION  
VIRGINIA VALLI

in  
"THE ESCAPE"

Compiled by Michael P. Krueger  
The timing is based on speed of 12 minutes per reel

1. AT SCREENING .....THEME: Was It a Dream? (Spier) ..... ½ Min.

*Theme*

Copyr. 1928 Spier & Coslow

2. (Title) WHILE THE HAND OF RICHES .....Jingles (Zamecnik) ..... ¾ Min.

Copyr. 1928 Sam Fox

3. (Title) —IT'S BLINDNESS ALL .....Sidewalks of New York from "Old Tintlers" (Lake)..... ½ Min.

*(Red Mill)*

Copyr. 1917 Carl Fischer

4. (Action) CHANGE OF SCENE TO AMBULANCE .....Galop-Hurry (Langey) ..... 1¼ Min.

Copyr. 1920 Oliver Ditson Co

5. (Action) DOCTOR ENTERS HOUSE .....Ominous Moments (Kempinski) ..... 1¾ Min.

Copyr. 1927 Irving Berlin

6. (Title) GET HER OUT QUICK .....By Silent Hearth (Wagner) ..... 2 Min.

Copyr. 1920 Hawkes & Son

7. (Title) JENNY JOYCE .....Miss Antique (Trinkaus) ..... 2 Min.

Copyr. 1908 Witmark & Sons

8. (Title) MAY JOYCE—THE OLDER .....Heart to Heart (Trinkaus) ..... 4 Min.

Copyr. 1910 Witmark & Sons

9. (Title) LIFE'S A TOUGH PROPOSITION .....Repeat Theme No. 1 ..... 1 Min.

10. (Title) A GIRL AND A BOY ..... THEME: Was It a Dream? (Spier) ..... 1 Min.

*Walse*  
 Musical notation for 'A GIRL AND A BOY' in 3/4 time, key of D major. The melody is written on a single staff with a treble clef. It begins with a treble clef, a key signature of one sharp (F#), and a 3/4 time signature. The music consists of a series of eighth and quarter notes, ending with a repeat sign.  
Copyr. 1922 Spiera Coslow

11. (Action) AMBULANCE SEEN ..... Moon Madness (Lodge) ..... 3/4 Min.

*All<sup>o</sup>*  
 Musical notation for 'AMBULANCE SEEN' in 2/4 time, key of D major. The melody is written on a single staff with a treble clef. It begins with a treble clef, a key signature of one sharp (F#), and a 2/4 time signature. The music consists of a series of eighth and quarter notes, ending with a repeat sign.  
Copyr. 1925 Robbins Music Co.

12. (Action) DR. ELLIOTT DROPS FLASK ..... Dramatic Tension (Axt) ..... 1 3/4 Min.

*Andte*  
 Musical notation for 'DR. ELLIOTT DROPS FLASK' in 3/4 time, key of D major. The melody is written on a single staff with a treble clef. It begins with a treble clef, a key signature of one sharp (F#), and a 3/4 time signature. The music consists of a series of eighth and quarter notes, ending with a repeat sign.  
Copyr. 1926 Robbins Music Co.

13. (Title) A NIGHT CLUB ..... Tin Pan Parade (Whiting) ..... 3/4 Min.

*Mod<sup>o</sup>*  
 Musical notation for 'A NIGHT CLUB' in 3/4 time, key of D major. The melody is written on a single staff with a treble clef. It begins with a treble clef, a key signature of one sharp (F#), and a 3/4 time signature. The music consists of a series of eighth and quarter notes, ending with a repeat sign.  
Copyr. 1927 De Sylva

14. (Title) JERRY MARTIN ..... A Prohibition Episode (Aborn) ..... 1 Min.

*Marcia funebre*  
 Musical notation for 'JERRY MARTIN' in 2/4 time, key of D major. The melody is written on a single staff with a treble clef. It begins with a treble clef, a key signature of one sharp (F#), and a 2/4 time signature. The music consists of a series of eighth and quarter notes, ending with a repeat sign.  
Copyr. 1922 Edwin J. Tra

15. (Action) CHANGE OF SCENE TO JOYCE HOME ..... Moonbeams (Oliver) ..... 1 1/2 Min.

*Molto lenfo*  
 Musical notation for 'CHANGE OF SCENE TO JOYCE HOME' in 2/4 time, key of D major. The melody is written on a single staff with a treble clef. It begins with a treble clef, a key signature of one sharp (F#), and a 2/4 time signature. The music consists of a series of eighth and quarter notes, ending with a repeat sign.  
Copyr. 1925 Witmark & Sons

16. (Title) DAD, LET'S MOVE OUT ..... Rose Leaves (Edwards) ..... 1 1/4 Min.

*Andte mod<sup>o</sup>*  
 Musical notation for 'DAD, LET'S MOVE OUT' in 3/4 time, key of D major. The melody is written on a single staff with a treble clef. It begins with a treble clef, a key signature of one sharp (F#), and a 3/4 time signature. The music consists of a series of eighth and quarter notes, ending with a repeat sign.  
Copyr. 1923 Robbins Music Co.

17. (Action) CHANGE OF SCENE TO DOCK ..... The Devil's Elixir (Marquardt) ..... 1/2 Min.

*All<sup>o</sup>*  
 Musical notation for 'CHANGE OF SCENE TO DOCK' in 6/8 time, key of D major. The melody is written on a single staff with a treble clef. It begins with a treble clef, a key signature of one sharp (F#), and a 6/8 time signature. The music consists of a series of eighth and quarter notes, ending with a repeat sign.  
Copyr. 1927 Music Buyers Corp

18. (Action) SHOOTING STARTS ..... La Violence (Casadesus) ..... 1 3/4 Min.

*All<sup>o</sup> molto*  
 Musical notation for 'SHOOTING STARTS' in 3/4 time, key of D major. The melody is written on a single staff with a treble clef. It begins with a treble clef, a key signature of one sharp (F#), and a 3/4 time signature. The music consists of a series of eighth and quarter notes, ending with a repeat sign.  
Copyr. 1926 W. Salabert & Co.

19. (Action) CHANGE OF SCENE TO MAY ..... Valse Pathetique (Baron) ..... 1 1/4 Min.

*Valse lento*  
 Musical notation for 'CHANGE OF SCENE TO MAY' in 3/4 time, key of D major. The melody is written on a single staff with a treble clef. It begins with a treble clef, a key signature of one sharp (F#), and a 3/4 time signature. The music consists of a series of eighth and quarter notes, ending with a repeat sign.  
Copyr. 1920 G. Schirmer

20. (Title) AFTER WEEKS OF LOOKING ..... Dilemma (Savino) ..... 1 1/4 Min.

*Andte*  
 Musical notation for 'AFTER WEEKS OF LOOKING' in 3/4 time, key of D major. The melody is written on a single staff with a treble clef. It begins with a treble clef, a key signature of one sharp (F#), and a 3/4 time signature. The music consists of a series of eighth and quarter notes, ending with a repeat sign.  
Copyr. 1925 Robbins Music Co.

21. (Action) CHANGE OF SCENE TO EXTERIOR OF NIGHT CLUB ..... Changes (Donaldson) ..... 1 1/4 Min.

*Mod<sup>o</sup>*  
 Musical notation for 'CHANGE OF SCENE TO EXTERIOR OF NIGHT CLUB' in 3/4 time, key of D major. The melody is written on a single staff with a treble clef. It begins with a treble clef, a key signature of one sharp (F#), and a 3/4 time signature. The music consists of a series of eighth and quarter notes, ending with a repeat sign.  
Copyr. 1927 Leo Feist

22. (Action) GIRLS ENTER DRESSING ROOM ..... An Argument (Breil) ..... 3/4 Min.

*Mod<sup>o</sup>*  
 Musical notation for 'GIRLS ENTER DRESSING ROOM' in 3/4 time, key of D major. The melody is written on a single staff with a treble clef. It begins with a treble clef, a key signature of one sharp (F#), and a 3/4 time signature. The music consists of a series of eighth and quarter notes, ending with a repeat sign.  
Copyr. 1924 Southernm. Co.

23. (Action) MAY JOYCE CLOSES DOOR OF DRESSING ROOM ..... Melancolie (Bruneau) ..... 1/2 Min.

24. (Title) YOU BETTER PUT THE SLUG ..... Misterioso Drammatico (Savino) ..... 1 Min.

25. (Action) MAY PHONES JENNY ..... Too Many Parties (Henderson) ..... 1 1/4 Min.

26. (Action) CHANGE OF SCENE TO NIGHT CLUB OWNER ..... Dante's Inferno (Borch) ..... 2 1/4 Min.

27. (Action) MAY ENTERS CELLAR WORK-ROOM ..... The Tragic Discovery (Patou) ..... 1 Min.

28. (Action) DOCTOR RECOGNIZES MAY ..... Repeat Theme No. 1 ..... 1 1/2 Min.

29. (Action) CHANGE OF SCENE TO BAR ..... Characteristic No. 2 (Roberts) ..... 1 1/4 Min.

30. (Title) THAT'S A FINE JOB ..... Dram. Andante No. 1 (Rapee-Axt) ..... 3/4 Min.

31. (Action) CHANGE OF SCENE BACK TO BAR ..... Repeat No. 29 "Characteristic No. 2" ..... 1 Min.

32. (Title) DO YOU REMEMBER ..... Repeat Theme No. 1 ..... 1 Min.

33. (Title) WHAT'RE YOU DOIN' DOWN HERE? ..... Prelude Dramatique (Moreau) ..... 1 1/2 Min.

34. (Title) 5:00 A.M.—AND A BREATHING ..... An Arcadian Romance (MacElwain) ..... 3 Min.

35. (Action) MAY GOES TO DR. ELLIOTT ..... Repeat Theme No. 1 ..... 1 1/4 Min.

36. (Action) CAFE OWNER COMES DOWN TO STILL ROOM ..... Scherzo Serioso (Lowitz) ..... 1/2 Min.

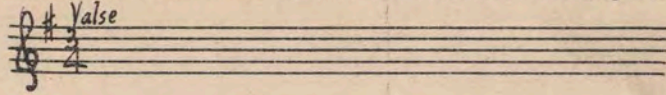
37. (Title) GO AWAY SOME PLACE ..... Repeat Theme No. 1 ..... 3/4 Min.

38. (Action) MAN LEAVES JENNY ..... Repeat No. 25 "Too Many Parties" ..... 2 3/4 Min.

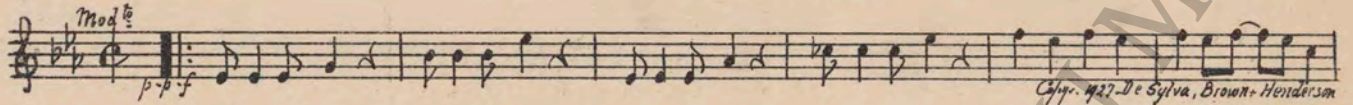
39. (Title) FRESH AIR—HARD WORK ..... Intermezzo (Arensky) ..... 1 1/4 Min.

NOTE: Drummer watch whistle.

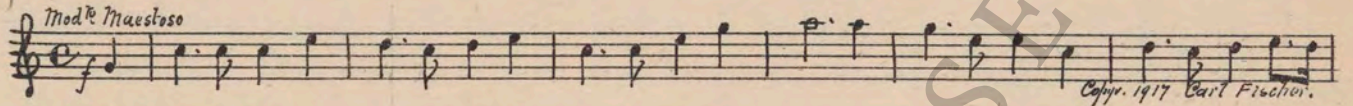
40. (Action) INSERT OF LETTER ..... Repeat Theme No. 1 ..... ¾ Min.



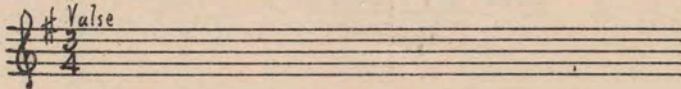
41. (Title) NEW YEAR'S EVE ..... Varsity Drag (Henderson) ..... ¾ Min.



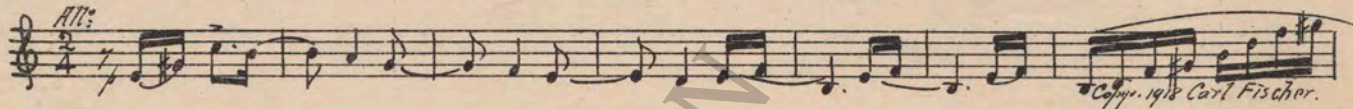
42. (Title) COME ON, EVERYBODY! ..... Auld Lang Syne (Seredy) ..... ½ Min.



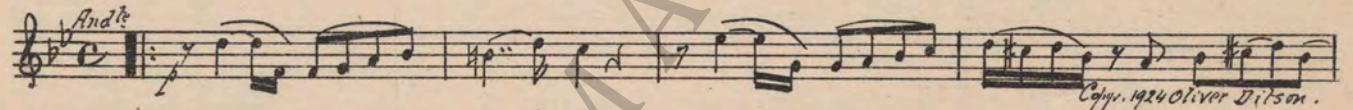
43. (Action) MAY COMES INTO HER DRESSING ROOM... Repeat Theme No. 1 ..... 1 Min.



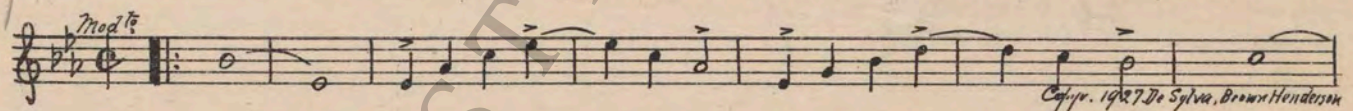
44. (Action) CAFE OWNER KNOCKS ON MAY'S DRESSING ROOM DOOR ..... Dramatic Tension (Luscomb) ..... 1½ Min.



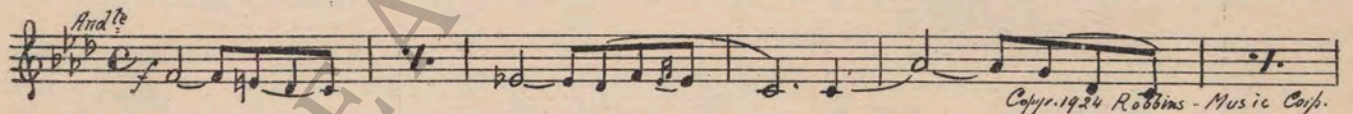
45. (Title) I WANT TO TELL YOU ..... Exultation (Hosmer) ..... 1 Min.



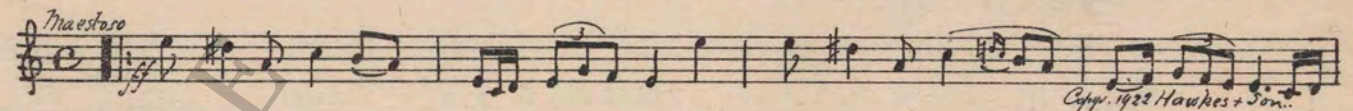
46. (Action) CHANGE OF SCENE TO CAFE ..... Good News (Henderson) ..... 1 Min.



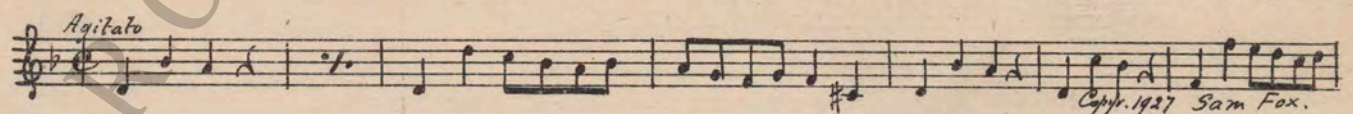
47. (Action) MAY SEES JENNY ..... Love Tragedy (Savino) ..... 2 Min.



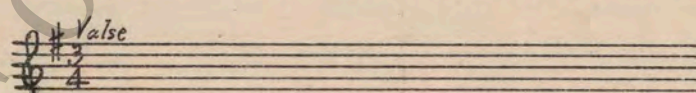
48. (Action) MAY COMES OVER TO TRIGGER CASWELL.. Dramatic Finale (Noyes) ..... 1½ Min.



49. (Action) FIGHTING STARTS ..... Disturbance (Zamecnik) ..... 2 Min.



50. (Action) ESCAPE ..... Repeat Theme No. 1 ..... 1 Min.



Printed in U. S. A.

THE END

Complete orchestrations and single piano parts of each separate number contained hereon, can be purchased from CAMEO MUSIC SERVICE CORPORATION, 315-317 WEST 47TH STREET, NEW YORK CITY.

176 .75  
177 .85  
178 .85

95-1768-1