

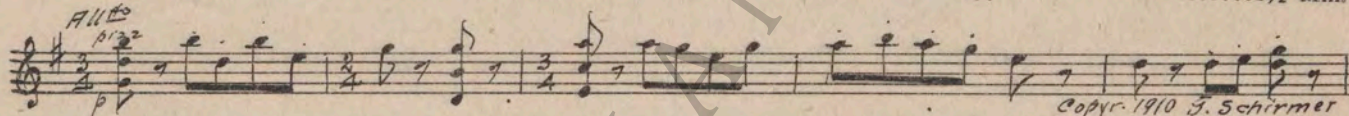
16



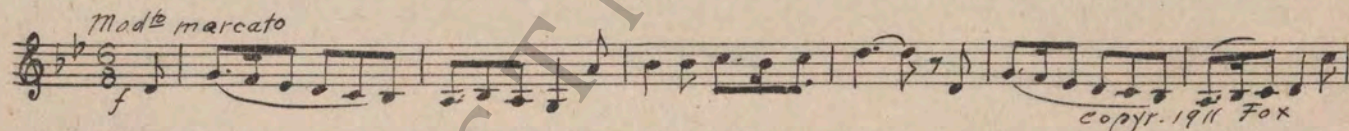
CECIL B. De MILLE
 presents
LEATRICE JOY
 in
"EVE'S LEAVES"
 A PAUL SLOANE PRODUCTION
 with
 WILLIAM BOYD
 Adapted by Elmer Harris
 From the Play by Harry Chaplin Ford
 Music compiled by James C. Bradford
 Released by

PRODUCERS DISTRIBUTING CORPORATION

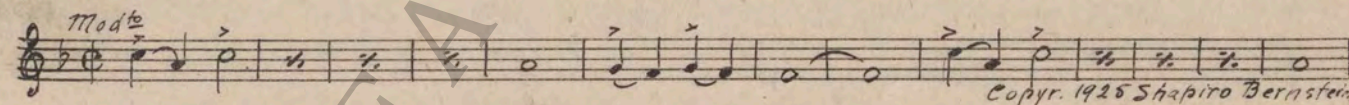
1 AT SCREENING The Lady Picking Mulberries (Kelley) 1½ Min.



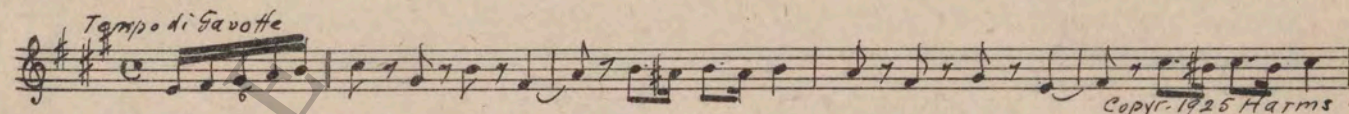
2 (Title) THE AMERICAN SCHOONER Secret of the Sea (Zamecnik) 1¼ Min.



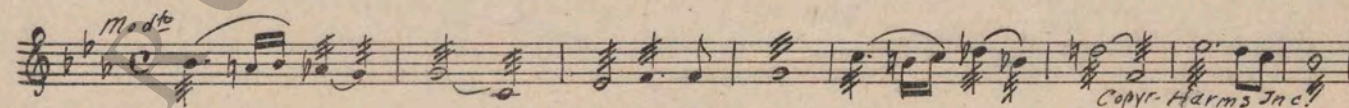
3 (Title) EVE MACEY Oh Boy, What a Girl (Green) ¾ Min.



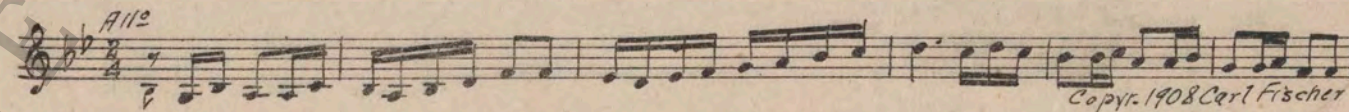
4 (Title) I'M WARNIN' YE A Shy Coquette (Grant) 1¼ Min.



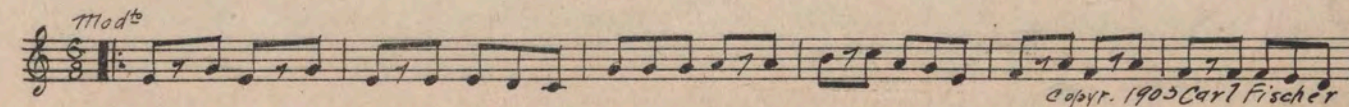
5 (Action) COOK TAKES LOVE ALMANAC FROM POCKET Somewhere a Voice Is Calling (Tate) 1 Min.



6 (Action) NOTE: Play tremolo and "PP". EVE GETS UP FROM SEAT Cinderella (Lorraine) 1¼ Min.



7 (Title) THAT VIBRATION STUFF Silly Billy (Bendix) 2¼ Min.



- 8 (Title) OF ALL EVE'S LEAVES Escapade (Fabry) 1¼ Min.
Savotte

p *Copyr. J. Yves*
- 9 (Title) THE GOLDEN DRAGON CAFE In a Chinese Tea Room (Langey) 1 Min.

Copyr. 1917 G. Schirmer
- 10 (Title) HIS SON BILL Yankee Doodle Boy (Cohan) 1 Min.
Marcia

Copyr. 1915 Robbins Engel
- 11 (Action) MACEY AND BILL'S FATHER BUMP INTO EACH OTHER Parade of the Dolls (Gruenwald) 1 Min.
All^o

Copyr. Oliver Ditson
- 12 (Action) MACEY AND EVE APPROACH CHINA-MAN'S TABLE Chinky Butterfly (David) 1 Min.

Copyr. 1925 Berlin
- 13 (Action) INSERT—LOVE'S ALMANAC Repeat No. 5 "Somewhere a Voice Is Calling" ¾ Min.
Mod^o
- 14 (Action) NOTE: Play tremolo and "PP" throughout.
EVE SEES BILL It Must Be Love (Archer) 2½ Min.
Mod^o

Copyr. 1925 Leo Feist
- 15 (Action) CHINAMAN SEEN RUNNING OUTSIDE Hurry No. 87 (Berge) 1¾ Min.
All^o giusto

Copyr. 1924 Ross Jungnickel
- 16 (Title) CHANG FANG Robber's March from "Chu Chin Chow" (Norton) 1¾ Min.
Mod^o
mf

Copyr. 1918 J. Stern & Co
- 17 (Action) MACEY ABOARD SHIP Rush Hours (Sanders) 1¾ Min.
Vivo

Copyr. 1925 G. H. Sanders
- 18 (Title) MY NAME IS "EVE" Repeat No. 3 "Oh Boy, What a Girl" 1¾ Min.
Mod^o

✓ 19 (Action) FLASH—MAN BEING BOUND A Game of Tag (Trinkaus)

Musical notation for item 19, featuring a treble clef, key signature of one sharp (F#), and a 6/8 time signature. The tempo is marked *All^o* and the dynamics are *mf*. The score consists of a single line of music with various rhythmic values. Copyright notice: *Copyr. 1911 Witmark*.

✓ 20 (Action) AFTER EVE TIES BILL AND WALKS AWAY WHISTLING Mocking Bird (Seredy) (Direct Cue)

Musical notation for item 20, featuring a treble clef, key signature of one sharp (F#), and a 2/4 time signature. The tempo is marked *3^{ma}*. The score consists of a single line of music. Copyright notice: *Copyr. 1911 Witmark*.

SEGUE: A Game of Tag (Trinkaus)

Musical notation for the segue to item 21, featuring a treble clef, key signature of one sharp (F#), and a 6/8 time signature. The tempo is marked *All^o*. The score consists of a single line of music. Copyright notice: *Copyr. 1911 Witmark*.

✓ 21 (Action) WHEN EVE IS SEEN ON BOAT WHISTLING. Mocking Bird (Seredy) (Direct Cue)

Musical notation for item 21, featuring a treble clef, key signature of one sharp (F#), and a 2/4 time signature. The tempo is marked *3^{ma}*. The score consists of a single line of music. Copyright notice: *Copyr. 1911 Witmark*.

SEGUE: A Game of Tag (Trinkaus)

Musical notation for the segue to item 22, featuring a treble clef, key signature of one sharp (F#), and a 6/8 time signature. The tempo is marked *All^o*. The score consists of a single line of music. Copyright notice: *Copyr. 1911 Witmark*.

✓ 22 (Action) CHANG COMES ABOARD SHIP..... Repeat No. 16, "Robber's March" 3¼ Min.

Musical notation for item 22, featuring a treble clef, key signature of one sharp (F#), and a common time signature (C). The tempo is marked *Mod^{to}*. The score consists of a single line of music. Copyright notice: *Copyr. 1911 Witmark*.

✓ 23 (Title) BOUND FOR MOOKOW Timpany Roll ¼ Min.

Musical notation for item 23, featuring a bass clef and a common time signature (C). The score consists of a single line of music. Copyright notice: *Copyr. 1911 Witmark*.

✓ 24 (Action) BILL'S FATHER SEEN IN MOTOR CAR..... Looking for a Boy (Gershwin) ¾ Min.

Musical notation for item 24, featuring a treble clef, key signature of one sharp (F#), and a common time signature (C). The tempo is marked *Mod^{to}*. The score consists of a single line of music. Copyright notice: *Copyr. 1925 Harms Inc.*

✓ 25 (Action) BOAT IS SEEN Jolly Buccaneers (Schertzing) 2 Min.

Musical notation for item 25, featuring a treble clef, key signature of one sharp (F#), and a 6/8 time signature. The tempo is marked *And^{ante}*. The score consists of a single line of music. Copyright notice: *Copyr. 1924 Photo Play Mus. Co.*

✓ 26 (Action) EVE IS SEEN I Ain't Got Nobody (Graham) 1¾ Min.

Musical notation for item 26, featuring a treble clef, key signature of two flats (Bb, Eb), and a common time signature (C). The tempo is marked *Mod^{to}*. The score consists of a single line of music. Copyright notice: *Copyr. 1925 Triangle M. Co.*

✓ 27 (Action) EVE ALONE IN HER STATE ROOM When a Blonde Makes Up Her Mind (Mills) ½ Min.

Musical notation for item 27, featuring a treble clef, key signature of two flats (Bb, Eb), and a common time signature (C). The tempo is marked *Mod^{to}*. The score consists of a single line of music. Copyright notice: *Copyr. 1925 Jack Mills*.

28 (Action) SCENE ABOARD SHIP Waters of the Perkiomen (Klickman) ¾ Min.

Valse Andte
Musical notation for 'Waters of the Perkiomen' in treble clef, 3/4 time, key of D major. It features a waltz-like melody with a piano (p) dynamic.
Copyr. 1924 Jack Mills

29 (Action) EVE OPENS DOOR Repeat No. 4 "A Shy Coquette" ¾ Min.

Tempo di Gavotte
Musical notation for 'A Shy Coquette' in treble clef, 3/4 time, key of D major. It consists of a single measure of a rhythmic pattern.

30 (Action) EVE STARTS DANCING AROUND BILL Vision of Salome (Joyce) ½ Min.

Musical notation for 'Vision of Salome' in treble clef, 3/4 time, key of D major. It features a simple, rhythmic melody.
Copyr. 1910 Emil Ascher Inc

31 (Title) WHAT ARE YOU SUPPOSED TO BE? My Sweetie Turned Me Down (Kahn) 1¾ Min.

Modto
Musical notation for 'My Sweetie Turned Me Down' in treble clef, 2/4 time, key of D major. It features a moderate tempo melody.
Copyr. 1925 Irving Berlin Inc

32 (Action) BILLY KISSES EVE Kiss Me Again (Herbert) ¾ Min.

Valse
Musical notation for 'Kiss Me Again' in treble clef, 3/4 time, key of D major. It features a waltz-like melody.
Copyr. 1916 Witmark & Son

33 (Title) ONE HOUR AND 30 APPLES LATER Ain't We Got Fun (Whiting) ¾ Min.

Tazz
Musical notation for 'Ain't We Got Fun' in treble clef, 2/4 time, key of D major. It features a jazz-influenced melody with a piano (pp) dynamic.
Copyr. 1921 Remick & Co

34 (Action) CHANG SEEN COMING DOWN Repeat No. 16 "Robber's March" 1½ Min.

Modto
Musical notation for 'Robber's March' in treble clef, 3/4 time, key of D major. It consists of a single measure of a rhythmic pattern.

35 (Action) MACEY AND MEN SEEN Restless Bows (Srawley) 2¾ Min.

Agitato
Musical notation for 'Restless Bows' in treble clef, 2/4 time, key of D major. It features a fast, rhythmic melody.
Copyr. 1925 G.H. Sanders

36 (Action) CHANG AND MEN SEEN Mysterioso Furioso (Langey) ¾ Min.

Allo misterioso
Musical notation for 'Mysterioso Furioso' in treble clef, 3/4 time, key of D major. It features a slow, dramatic melody.
Copyr. Oliver Ditson

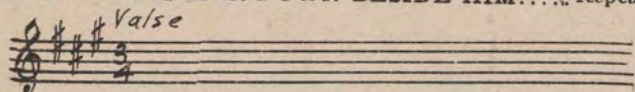
37 (Title) BY NIGHTFALL Beware (Bizet) 1 Min.

Allto
Musical notation for 'Beware' in treble clef, 3/4 time, key of D major. It features a fast, rhythmic melody.
Copyr. 1921 G. Rose & Co

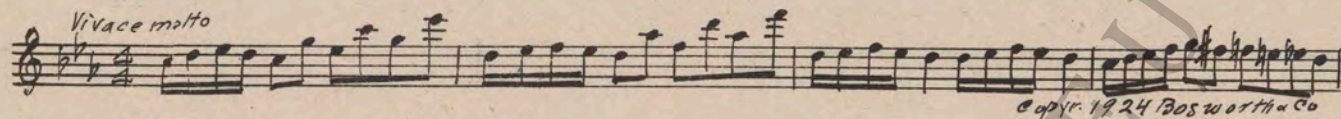
38 (Action) COOK ENTERS EVE'S ROOM Little Coquette (Reiser) 3½ Min.

Allto
Musical notation for 'Little Coquette' in treble clef, 3/4 time, key of D major. It features a fast, rhythmic melody.
Copyr. 1921 Carl Fischer

39 (Action) BILLY PULLS HER DOWN BESIDE HIM..... Repeat No. 32 "Kiss Me Again"1¼ Min.

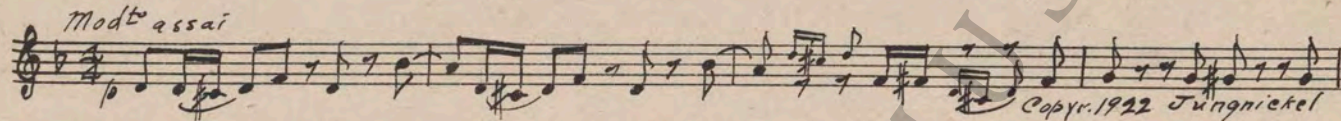


40 (Action) MEN SEEN ON STAIRS Dram. Agitato No. 1 (Ketelbey)2¼ Min.

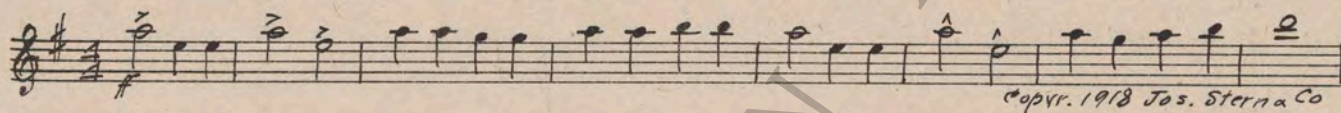


NOTE: Play to action, "PP" after fight.

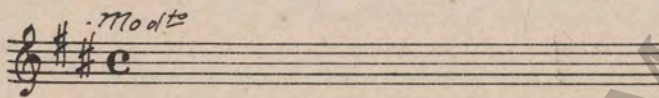
41 (Action) EVE SEEN ALONE Misterioso No. 82 (Berge)1¼ Min.



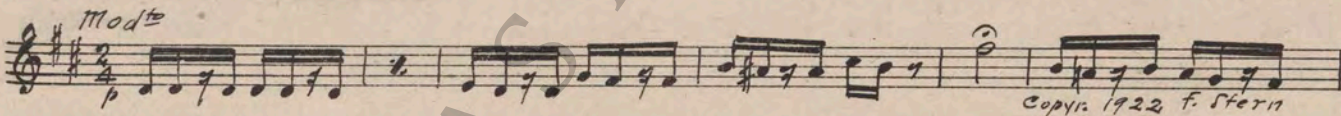
42 (Title) CHANG'S PALACE Chu Chin Chow Selection (Norton)¾ Min.



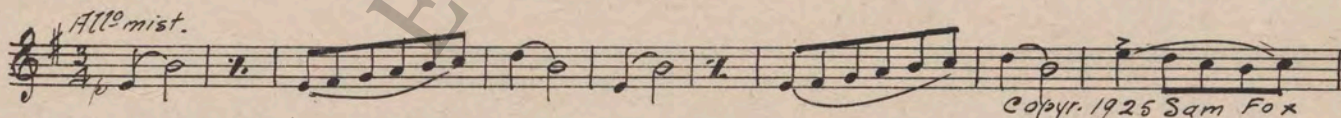
43 (Action) CHANG SEEN Repeat No. 16 "Robber's March"¾ Min.



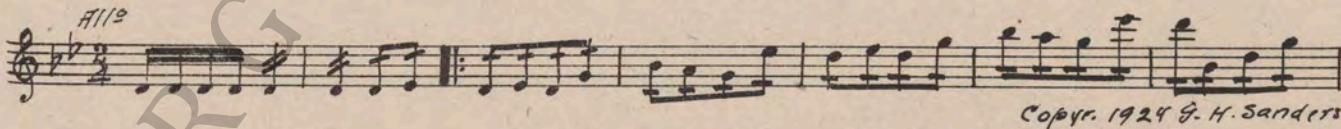
44 (Title) BUT YOU DON'T GET GIRL Agitato No 84 (Berge)¾ Min.



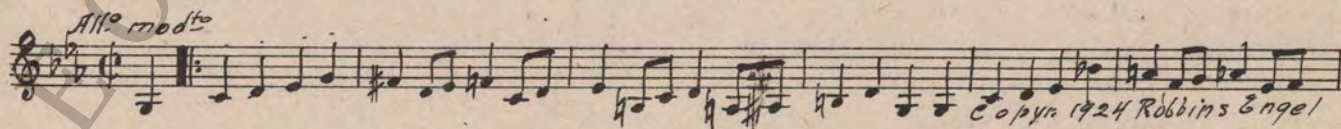
45 (Action) EVE OPENS BOX A Mysterious Event (Zamecnik)¾ Min.



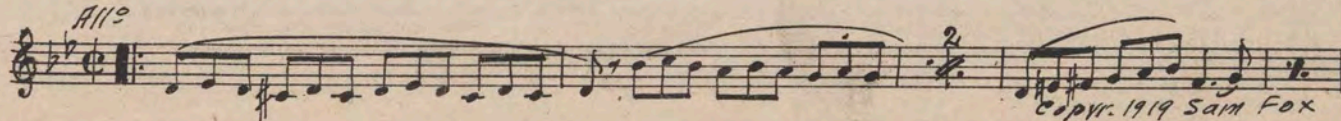
46 (Action) DRAG BILL OUT Moto Perpetuo (Weiss)2½ Min.



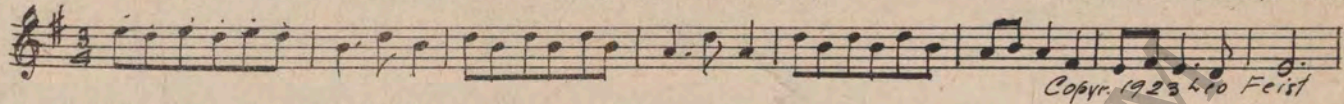
47 (Action) CHANG SEES SLEEVE OUTSIDE BOX Misterioso Burlesque (Savino)2¼ Min.



48 (Title) MEANWHILE BILL'S FATHER Storm Music (Zamecnik)¾ Min.

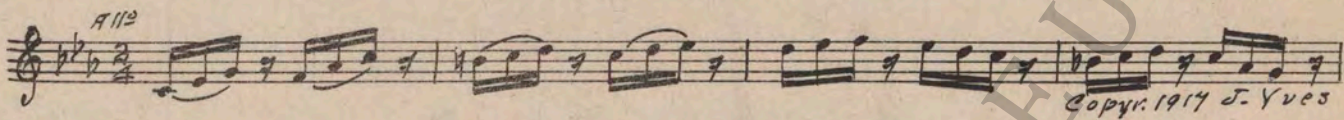


49 (Action) CHANG SEEN Top-Tim-Bom (Moret) 2½ Min.



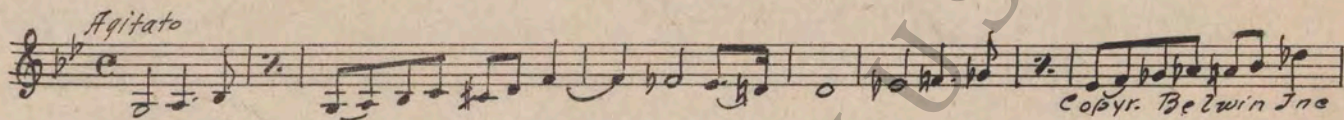
Copyr. 1923 Leo Feist

NOTE: Play as Moderato, not Waltz.
50 (Action) BILL'S FATHER AND SOLDIERS SEEN Poursuite (Fosse) 1¼ Min.



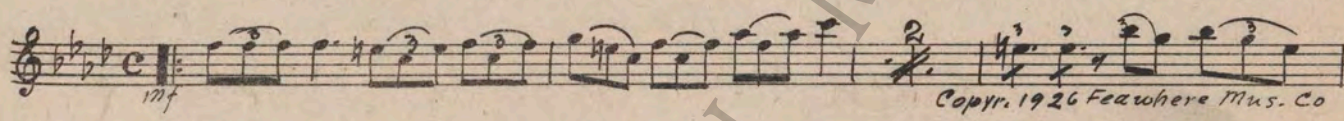
Copyr. 1917 J. Yves

51 (Action) TORTURE SCENE Situazione Pericolosa (Bece) 2¼ Min.



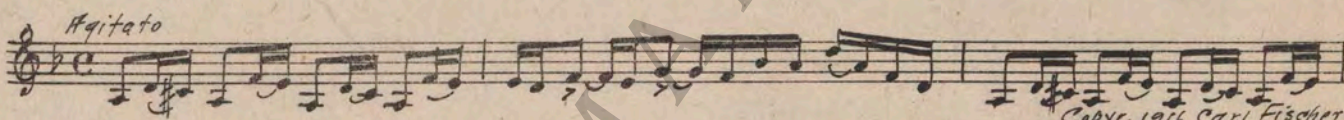
Copyr. Belwin Inc

52 (Action) CHANG PUTS HANDS INTO LOOPS S-O-S (Herkan) 3 Min.



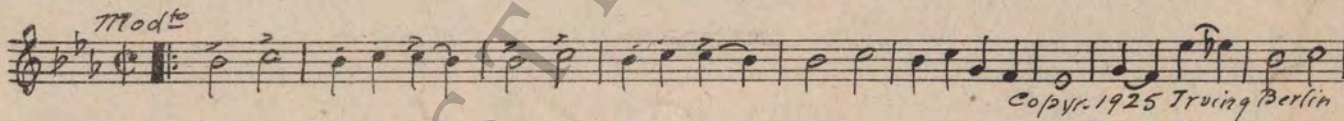
Copyr. 1926 Feawhere Mus. Co

53 (Action) FLASH—SOLDIERS Agitato No. 30 (Lake) 1½ Min.



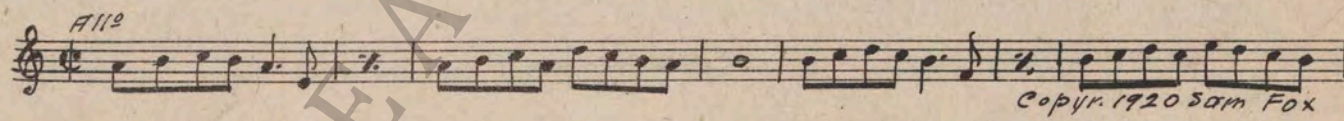
Copyr. 1916 Carl Fischer

54 (Title) DAD, TAKE A SLANT Yes Sir, That's My Baby (Donaldson) 1½ Min.



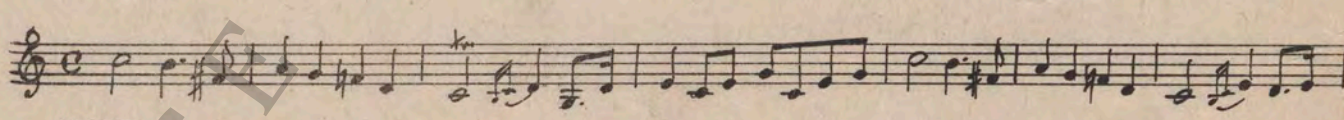
Copyr. 1925 Irving Berlin

55 (Action) CHASE Hurry No. 1 (Zamecnik) ½ Min.

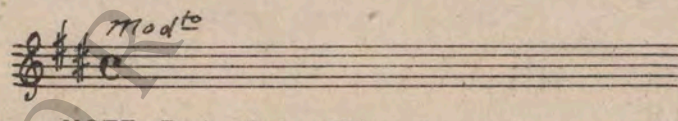


Copyr. 1920 Sam Fox

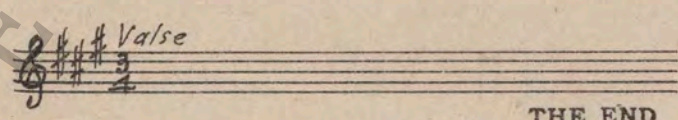
56 (Action) MINISTER STARTS WEDDING CEREMONY.. Wedding March (Mendelssohn) ¼ Min.



NOTE: Play fast and "PP".
57 (Action) CHANG AND SHOW TONGNOE SEEN Repeat No. 16 "Robber's March" ¼ Min.



NOTE: During flash of Chinese letters, play discords "FF", then repeat No. 16 Robber's March."
58 (Action) BILL AND EVE SEEN Repeat No. 32 "Kiss Me Again" Till finish



THE END

Country of Origin, U. S. A.

Complete orchestrations and single piano parts of each separate number contained hereon, can be purchased from CAMEO MUSIC SERVICE CORPORATION, 315-317 West 47th Street, New York City.

95:1471:1