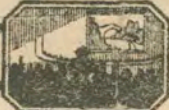


Thematic Music  Cue Sheet

M. J. MINTZ PATENT  
JULY 21, 1912

ALBERT L. GREY

presents

LLOYD HAMILTON

IN

“HIS DARKER SELF”

Distributed by HODKINSON  
First run Pictures

Music compiled by  
James C. Bradford

1 AT SCREENING ..... Spangles (Bratton) ..... 2¾ Min.



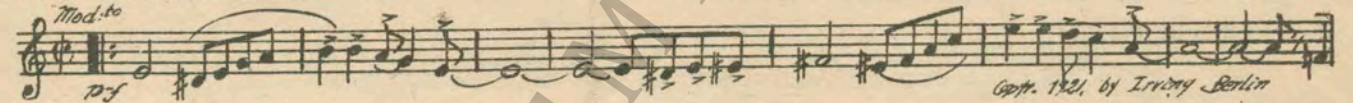
2 (Title) THE HARBOR OF GINSBURG ..... Negro Dance (White) ..... 1½ Min.



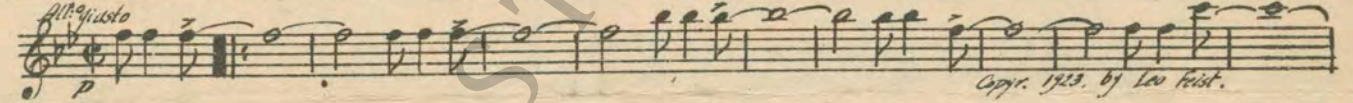
3 (Title) AT BILL JACKSON'S BLACK CAFE..... Aggravatin' Papa (Britt) Direct Cue..... 1¼ Min.



4 (Title) PANSY ..... I Wonder Where My Sweet, Sweet Daddy's Gone (Stark)..... 1 Min.



5 (Action) DANCING STARTS ..... Runnin' Wild (Gibbs) ..... 1½ Min.



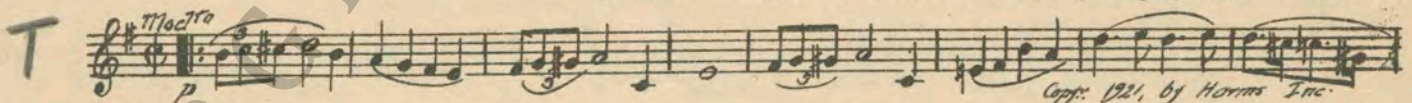
6 (Title) AUNT LUCY ..... The Colored Ragamuffins (Henry) ..... 1¼ Min.



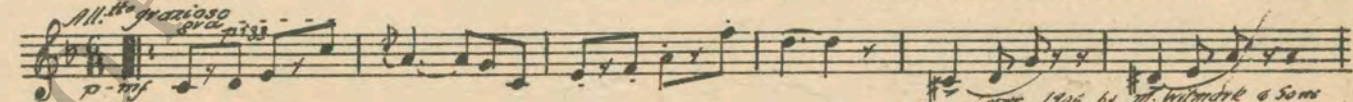
7 (Title) CLAUD SAPPINGTON ..... Prelude (Jarnfelt) ..... 1¾ Min.



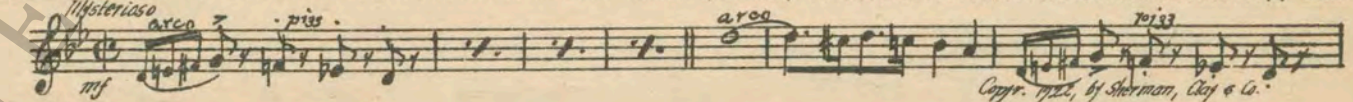
8 (Title) THE PEACH OF AN OLD ..... THEME: Sally, Won't You Come Back (Stamper)..... 3½ Min.



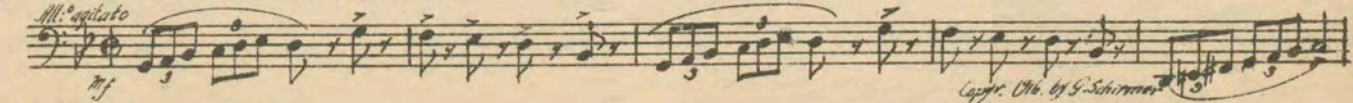
9 (Title) IT TAKES A HERO ..... Lords and Ladies (Salzer) ..... 1½ Min.



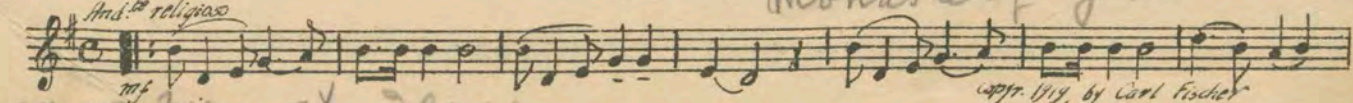
10 (Title) THAT NIGHT ..... The Sneak (Brown) ..... ¾ Min.



11 (Action) REVENUE MEN APPEAR ON SHORE..... Agitato No. 3 (Langey) ..... 2 Min.



12 (Title) THE NEXT MORNING ..... Chant (White) ..... 2¾ Min.



D - Revenue men at scene

13 (Action) REVENUE MEN AT FENCE ..... The Hobbledehov (Olson) ..... 1½ Min.

*All<sup>o</sup>*

Copyr. 1915 by Hawkes & Son.

NOTE: Start slowly as misterioso and gradually work up to Allegro.

14 (Action) ENTRANCE TO BLACK CAT CAFE ..... Mamma Goes Where Papa Goes (Ager) ..... 5 Min.

*Mod<sup>to</sup>*

Copyr. 1920, by Ager Jellen & Co.

NOTE: Drummer catch hat kick-off with raps on S. D. "PP" for exteriors.

15 (Title) A DARK CORNER ..... Keep a Goin' (Gay) ..... 1¾ Min.

*Mod<sup>to</sup>*

Copyr. 1923, by Richmond Robbins & Co.

16 (Title) EVERYBODY OUTSIDE FOR ..... Whistling Rufus (Mills) ..... 3 Min.

*One or Two-Step*

Copyr. 1916, by Walter Jacobs.

NOTE: Drummer catch raps on S. D. as knives strike fence. Crash when juggler falls.

17 (Action) CLAUD CHASED BY EPH ..... Hurry No. 33 (Minot) ..... ½ Min.

*Vivace*

Copyr. 1916, by S. M. Berg.

18 (Title) COME IN, SINNER ..... Cabin Song (White) ..... ¾ Min.

*And<sup>te</sup> patetico*

Copyr. 1922, by Carl Fischer.

19 (Title) EVERY SINNER FOR HIS SELF ..... Hurry No. 26 (Minot) ..... 1 Min.

*Vivo*

Copyr. 1916, by S. M. Berg.

20 (Title) DESPITE OUR HERO'S ..... Marionettes (Byford) ..... ¾ Min.

*Mod<sup>to</sup>*

Copyr. 1921, by Bosworth & Colld.

21 (Title) THE REVENUE OFFICERS ..... Bohemiana (Smith) ..... 2¾ Min.

*Giacoso*

Copyr. 1909 by Carl Fischer.

22 (Title) OPEN DAT DOOR ..... March of the Spooks (Baron) ..... 1½ Min.

*Marcia Mod<sup>to</sup>*

Copyr. 1923, by Belwin Inc.

23 (Action) GIRL ENTERS ROOM ..... Allegro Precipitoso (Savino) ..... 5 Min.

*All<sup>o</sup> precipitoso*

Copyr. 1923, by G. Schirmer.

NOTE: Start slowly and gradually work up.

24 (Action) CLAUD ENTERS THROUGH WINDOW ..... Aces High (Boulton) ..... 3 Min.

*Galop*

Copyr. 1923, by Belwin Inc.

25 (Title) I AIN'T AS BLACK ..... Fuga (Gabriel-Marie) ..... 1½ Min.

*All<sup>o</sup> vivo ma non troppo*

Copyr. by Ricordi (Paris)

26 (Action) GOVERNOR OPENS DOOR ..... Repeat Theme No. 8 ..... 1¼ Min.

*Mod<sup>to</sup>*

THE END

Made in U. S. A.

Complete Orchestrations and single parts of all compositions contained herein can be purchased from  
 CAMEO MUSIC PUBLISHING CO., INC., 112-118 West 44th Street, New York City

95: 1900:1