

M. J. MINTZ (PATENT)  
JULY 31, 1923.

ADOLPH ZUKOR and JESSE L. LASKY

present

**ADOLPH MENJOU**

in  
**"HIS TIGER LADY"**

with

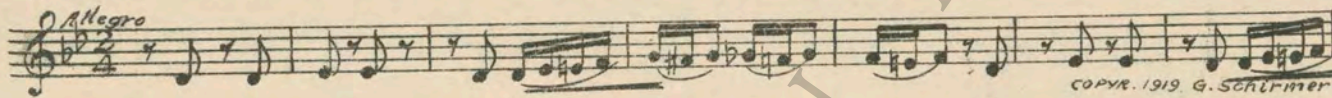
**Evelyn Brent**

A Hobart Henley Production  
Based on Alfred Savoir's play, "Super of the Gaiety"  
Adaptation by Ernest Vajda  
B. P. Schulberg, Associate Producer  
Compiled by James C. Bradford  
Footage 5038 feet



*A Paramount Picture*

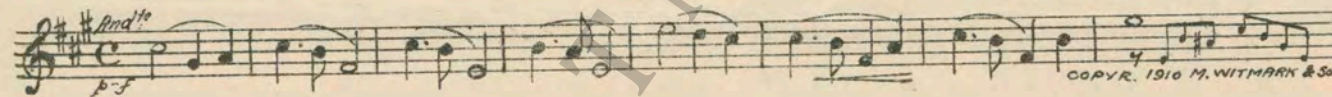
- 1 AT SCREENING ..... Ballet Music (Rubinstein) ..... 3¼ Min.



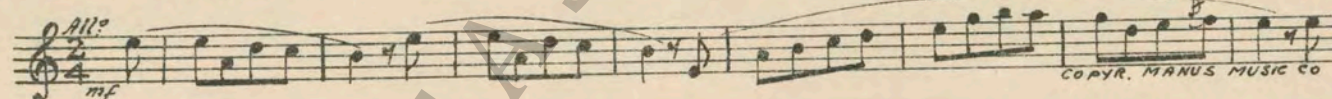
- 2 (Action) TIGER CAGE DRAGGED ON STAGE ..... Danse Circassienne from "La Source" Ballet (Delibes) ..... 1½ Min.



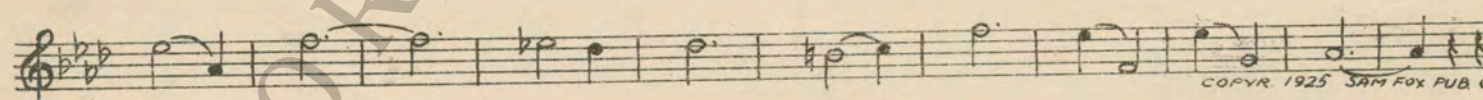
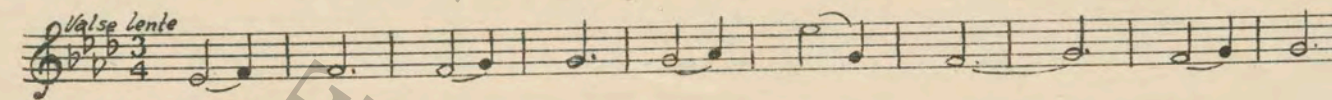
- 3 (Title) STOP YOUR DAY DREAMING ..... For You, Bright Eyes from "Bright Eyes" Selection (Hoschna) ..... 1½ Min.



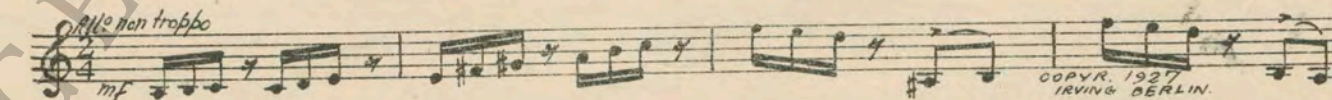
- 4 (Action) DUCHESS RISES AND LEAVES BOX ..... Chanson Naive (Tellam) ..... 2½ Min.



- 5 (Action) HENRI RECEIVES NOTE ..... LOVE THEME: Magic Love (Bradford) ..... ½ Min.



- 6 (Action) HENRI HURRIES FROM DRESSING ROOM... Allegro Buffonesco (Kempinski) ..... 2¼ Min.



*D. after water falls on Henry*

7 (Action) AFTER WATER FALLS ON HENRI .....Recitativo Patetico (Peele) ..... 2 Min.

Musical notation for item 7: Recitativo Patetico (Peele). Includes tempo marking *And<sup>te</sup>*, dynamics *pp* and *fz*, and copyright notice *COPYR 1927 BELWIN INC.*

8 (Action) DUCHESS AT TABLE WITH THREE GENTLEMEN ..... DUCHESS THEME: Serenade (Rachmaninoff) ..... 1 Min.

Musical notation for item 8: DUCHESS THEME: Serenade (Rachmaninoff). Includes tempo marking *valse*, dynamics *mf*, *f*, *dim.*, *p*, *mf a tempo*, and copyright notice *COPYR 1918 CARL FISCHER*.

9 (Action) HENRI ENTERS IN ORIENTAL DRESS .....ORIENTAL THEME: Kismet (Henlere) ..... 3 Min.

Musical notation for item 9: ORIENTAL THEME: Kismet (Henlere). Includes tempo marking *All<sup>to</sup> mod<sup>to</sup>*, dynamics *mf*, and copyright notice *COPYR 1920 WILL ROSSITER*.

10 (Action) DUCHESS RISES FROM TABLE .....Songe d'Amour (Ascher) ..... 2¼ Min.

Musical notation for item 10: Songe d'Amour (Ascher). Includes tempo marking *All<sup>to</sup> valse*, dynamics *p*, and copyright notice *COPYR. 1912 EMIL ASCHER*.

11 (Title) GENTLEMEN, IT IS MY PLEASURE .....Orientale (Cui) ..... 1½ Min.

Musical notation for item 11: Orientale (Cui). Includes tempo marking *All<sup>to</sup>*, dynamics *mf*, and copyright notice *COPYR 1919 CARL FISCHER*.

12 (Title) CHAMPAGNE FOR .....March of the Mannikens (Onivas) ..... 1¼ Min.

Musical notation for item 12: March of the Mannikens (Onivas). Includes tempo marking *All<sup>to</sup> mod<sup>to</sup>*, dynamics *mf*, and copyright notice *COPYR. 1923 ROBBINS MUSIC CORP*.

13 (Action) WAITER ADDING UP CHECK ..... Repeat Oriental Theme No. 9 ..... 2¾ Min.

Musical notation for item 13: Repeat Oriental Theme No. 9. Includes tempo marking *All<sup>to</sup> mod<sup>to</sup>*.

14 (Title) WHERE CAN I DROP YOU? .....Thais (Knox) ..... 1¾ Min.

Musical notation for item 14: Thais (Knox). Includes tempo marking *Valse lente*, dynamics *p*, and copyright notice *COPYR. 1918 J.S. W. STERN & CO*.

15 (Title) COUNTRYMEN OF YOURS ..... El Cahira (Mewes) ..... 2½ Min.

Musical notation for "COUNTRYMEN OF YOURS" with tempo marking *Allegro* and copyright notice *Copy. Jos. W. Stern & Co*.

16 (Action) HENRI RISES FROM SOFA ..... Polly (Zamecnik) ..... ¾ Min.

Musical notation for "HENRI RISES FROM SOFA" with tempo marking *Brightly* and copyright notice *Copyr. 1926 Sam Fox*. Includes handwritten word *Wolo*.

17 (Action) DUCHESS APPEARS IN NEGLIGEE ..... Repeat Duchess Theme No. 8 ..... 4 Min.

Musical notation for "DUCHESS APPEARS IN NEGLIGEE" with tempo marking *Sostenuto* and copyright notice *Copyr. 1918 Carl Fischer*. Includes handwritten words *Chanson de Pierrot*.

18 (Action) FADE-IN TIGER HEAD AND ZOO INCIDENT. Amina (Lincke) ..... 1 Min.

Musical notation for "FADE-IN TIGER HEAD AND ZOO INCIDENT" with tempo marking *Allegro moderato* and copyright notice *Copyr. Jos. W. Stern & Co*.

19 (Action) FADE-OUT ZOO INCIDENT ..... The Young Prince and Young Princess (Korsakow) ..... 2¼ Min.

Musical notation for "FADE-OUT ZOO INCIDENT" with tempo marking *Andante mosso* and copyright notice *Copyr. 1922 Carl Fischer*.

20 (Action) HENRI LEAVES SUITE—ENTERS ELEVATOR ..... Chatter (Kahn) ..... ½ Min.

Musical notation for "HENRI LEAVES SUITE—ENTERS ELEVATOR" with tempo marking *Allegro* and copyright notice *Copyr. 1926 Sonnemann Mus. Co*. Includes handwritten word *Box*.

D. Henry at Tiger's Cage

21 (Action) HENRI AT TIGER'S CAGE ..... Flocons de Neige (Bradford) ..... 1 1/4 Min.

Musical notation for item 21, featuring a treble clef, 2/4 time signature, and a key signature of one flat. The tempo marking is *Allegro*. Copyright: 1925 ROBBINS MUSIC CORP.

22 (Action) INSERT—"PARIS ZOO" ..... The Water Bug (Miles) ..... 1 1/2 Min.

Musical notation for item 22, featuring a treble clef, 2/4 time signature, and a key signature of one flat. The tempo marking is *Brightly*. Copyright: 1926 SAM FOX PUBL. CO.

23 (Action) DUCHESS APPEARS ..... Repeat Oriental Theme No. 9 ..... 2 Min.

Musical notation for item 23, featuring a treble clef and a key signature of one flat. The tempo marking is *All. mod. to*. A red handwritten mark is present to the left of the staff.

24 (Action) HENRI JOINS DUCHESS OUTSIDE OF CAGE. The Song Is Ended (Berlin) ..... 2 1/4 Min.

Musical notation for item 24, featuring a treble clef, 3/4 time signature, and a key signature of one flat. The tempo marking is *Valse*. Copyright: 1927 IRVING BERLIN INC.

25 (Action) REHEARSAL ON STAGE ..... Felix the Cat (Kortlander) ..... 1 1/4 Min.

Musical notation for item 25, featuring a treble clef, 2/4 time signature, and a key signature of one flat. The tempo marking is *LIVELY*. Copyright: 1928 SAM FOX PUBL. CO.

26 (Title) I HEAR YOU ARE AN ACTOR ..... Prelude (Symphonic Love Theme) (Savino) ..... 3/4 Min.

Musical notation for item 26, featuring a treble clef, 3/4 time signature, and a key signature of one flat. The tempo marking is *Mosso*. Copyright: 1929 ROBBINS MUSIC CORP.

27 (Title) DON'T GIVE UP ..... Repeat Love Theme No. 5 ..... 1 Min.

Musical notation for item 27, featuring a treble clef, 3/4 time signature, and a key signature of one flat. The tempo marking is *Valse lente*.

Two staves of musical notation at the bottom of the page, featuring a treble clef, 3/4 time signature, and a key signature of one flat. Copyright: 1925 SAM FOX PUBL. CO.

THE END

Country of Origin, U. S. A.

Complete orchestrations and single piano parts of each separate number contained hereon, can be purchased from CAMEO MUSIC SERVICE CORPORATION, 315-317 WEST 4TH STREET, NEW YORK CITY.

95:1905:1