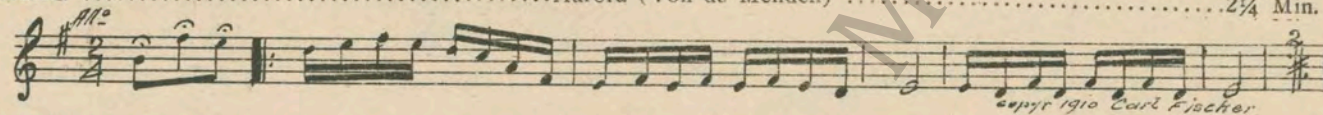


M. J. MINTZ (PATENT)
JULY 31, 1923

C. C. Burr
presents
JOHNNY HINES

in
"HOME MADE"
Directed by Charles Hines
Compiled by James C. Bradford
A First National Picture

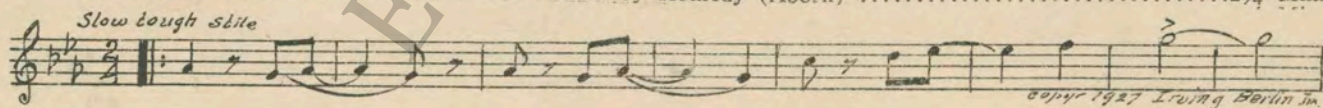
1 AT SCREENING Aurora (Von de Mehden) 2¾ Min.



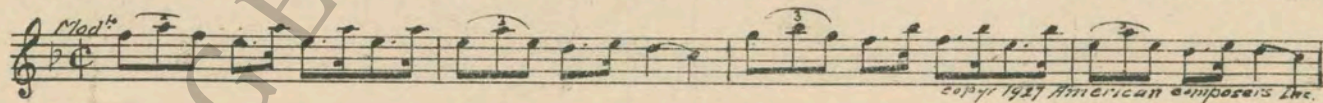
2 (Action) JOHNNY OPENS ENVELOPE JOHNNY THEME: Stepping On the Ivories (McLaughlin) .. ¾ Min.



3 (Title) JOHNNY'S STEPFATHER Kowboy Komedý (Aborn) 2¾ Min.



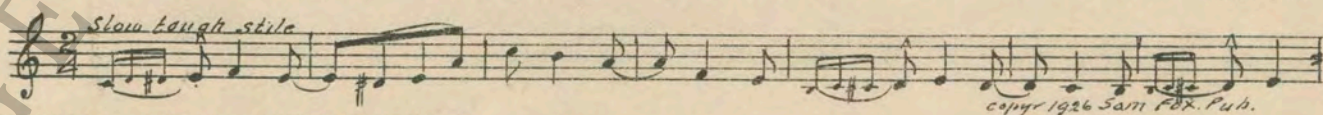
4 (Title) A STEPFATHER'S ORDER Jack In the Box (Bierman) 1 Min.



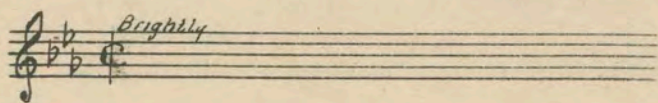
5 (Action) FATHER AT RADIO The Midnight Parade (Marquardt) 1½ Min.



6 (Title) MIDNIGHT—THE SWITCHING HOUR Illusions (Ring-Hager) ¾ Min.



7 (Action) JOHNNY DRIVES UP WITH FRIENDS Repeat Johnny Theme No. 2 ½ Min.



8. (Title) IF YOU HIT ME Agitato Drammatico (Savino) 3/4 Min.

Musical notation for "IF YOU HIT ME" with tempo marking *All.^o molto* and copyright notice *copyr. 1925 Robbins Music Corp.*

9 (Title) IT'S EASY TO LEAVE Mother (Romberg) 1/2 Min.

Musical notation for "IT'S EASY TO LEAVE" with tempo marking *Espress.* and copyright notice *copyr. 1916 G. Schirmer.*

10 (Title) THE STATION WAS CLOSED Love's Enchantment (Brookes) 2 3/4 Min.

Musical notation for "THE STATION WAS CLOSED" with tempo markings *Mod.^o con spizze*, *lento*, *8va*, and *loco.* and copyright notice *copyr. 1920 Hawkes & Son.*

11 (Title) MAKE UP DRAWING ROOM A Repeat Johnny Theme No. 2 2 1/2 Min.

Musical notation for "MAKE UP DRAWING ROOM A" with tempo marking *Brightly*.

12 (Action) MEN'S WASHROOM Out West (Pinard) 2 3/4 Min.

Musical notation for "MEN'S WASHROOM" with tempo marking *All.^o Giusto 8va div.* and copyright notice *copyr. 1926 Robbins music corp.*

13 (Title) TICKETS PLEASE Pollywog's Frolic (Rapee-Axt) 1 Min

Musical notation for "TICKETS PLEASE" with tempo marking *Moderato.* and copyright notice *copyr. 1923 Robbins music Corp.*

14 (Action) JOHNNY OPENS WINDOW—HAT BLOWS OUT Trouble (Bierman) 3/4 Min.

Musical notation for "JOHNNY OPENS WINDOW—HAT BLOWS OUT" with tempo marking *All.^o Agitato.* and copyright notice *copyr. 1927 American Composers Inc.*

15 (Action) JOHNNY CATCHES HAT Repeat Johnny Theme No. 2 1 Min.

Musical notation for "JOHNNY CATCHES HAT" with tempo marking *Brightly*.

16 (Title) AUNTIE INVITED JOHNNY What'll We Do For Dough? (Gordon) 2 1/2 Min.

Musical notation for "AUNTIE INVITED JOHNNY" with tempo marking *Mod.^o* and copyright notice *copyr. 1927 Wilmark & Sons.*

17 (Title) A BIG CITY Funny Faces (Ring-Hager) 1 Min.

Musical notation for "A BIG CITY" with tempo marking *Mod.^o con brio* and copyright notice *copyr. 1926 Sam Fox*

18 (Title) AS A WAITER Oh Mister (Frey) 2 Min.

Musical notation for "AS A WAITER" with tempo marking *All.^o* and copyright notice *copyr. 1924 Robbins music corp.*

19 (Action) MR. TILFORD IN ROOM Quelques Fleurs (Baron) 1 Min.

Musical notation for "MR. TILFORD IN ROOM" with tempo marking *Valse.* and copyright notice *copyr. 1925 Belwin Inc.*

20 (Action) JOHNNY ENTERS ROOM Pins and Needles (Kaufman) 1 Min.

Musical notation for "JOHNNY ENTERS ROOM" with tempo marking *All.^o Giusto 8va div.* and copyright notice *copyr. 1927 Irving Berlin Inc.*

21 (Action) JOHNNY TELEPHONES GIRLGIRL THEME: Miss Annabelle Lee (Pollack)¾ Min.

22 (Action) AUNT APPEARSValse Triste (Vecsey)½ Min.

23 (Action) JOHNNY AND GIRL AT ENTRANCE Repeat Girl Theme No. 211 Min.

24 (Action) JOHNNY ENTERS MUSIC SHOP Repeat Johnny Theme No. 21 Min.

25 (Action) INSERT—"HE ROWED HER UP THE RIVER" He Walked Right In½ Min.

26 (Action) RECORD CHANGEDPop-Goes the Weasel (Reeg)1 Min.

27 (Action) THEY SIT DOWNAin't We Got Fun (Whiting)1½ Min.

28 (Action) SALESMAN STARTS RECORDI've Been Longing For a Girl Like You (Johnson)¾ Min.

29 (Action) JOHNNY PICKS UP HATWhere Did you Get That Hat? (Sullivan)¼ Min.

30 (Title) 6 P. M.Ouch (Kaufman)1 Min.

31 (Action) JOHNNY TELEPHONES GIRL FRIEND Repeat Girl Theme No. 21½ Min.

32 (Title) LATER THAT EVENING Repeat Johnny Theme No. 12 Min.

33 (Title) I'VE GOT A GREAT IDEA Some Smoke (Romberg)1¾ Min.

34 (Title) THE TRANS-ATLANTIC FLYERThe Aeroplane (Ring-Hager)3¼ Min.

35 (Action) MEN LISTENING IN ON RADIO Shenendoah (Bendel) 1 Min.

Musical notation for item 35, featuring a treble clef, a key signature of one flat, and a 2/4 time signature. The tempo marking is *Mod^{to}*. The melody consists of eighth and quarter notes. Copyright notice: *copyr 1906 Sam Fox Pub. Co.*

36 (Title) NOW IS A GOOD TIME Perpetuum Mobile (Rapee) 1 3/4 Min.

Musical notation for item 36, featuring a treble clef, a key signature of one flat, and a 2/4 time signature. The tempo marking is *All^o molto*. The melody consists of eighth and quarter notes. Copyright notice: *copyr 1927 Belwin Inc.*

37 (Title) IT'S ALL A JOKE Repeat No. 27 "Ain't We Got Fun" 1 3/4 Min.

Musical notation for item 37, featuring a treble clef, a key signature of one flat, and a common time signature. The tempo marking is *Jazz*. The notation shows a few notes on a five-line staff.

38 (Action) GUESTS LEAVING Goodnight Ladies (Adams) 1/2 Min.

Musical notation for item 38, featuring a treble clef, a key signature of one flat, and a 3/4 time signature. The tempo marking is *Valse*. The melody consists of quarter and half notes. Copyright notice: *copyr 1914 Volkwein Bros.*

39 (Title) I KNOW WHY YOU'RE ANGRY Impression Dramatique (Bradford) 1 Min.

Musical notation for item 39, featuring a treble clef, a key signature of one flat, and a common time signature. The tempo marking is *All^o Agitato*. The melody consists of quarter and eighth notes. Copyright notice: *copyr 1927 Robbins music corp*

40 (Title) NEXT DAY FOUND JOHNNY Marionette (Arndt) 1 3/4 Min.

Musical notation for item 40, featuring a treble clef, a key signature of one flat, and a 2/4 time signature. The tempo marking is *All^o*. The melody consists of eighth and quarter notes. Copyright notice: *copyr 1907 Sam Fox Pub. Co.*

41 (Title) WHILE JOHNNY WAS Babillage (Gillet) 1 Min.

Musical notation for item 41, featuring a treble clef, a key signature of one flat, and a common time signature. The tempo marking is *All^o*. The melody consists of quarter and eighth notes. Copyright notice: *copyr 1889 Carl Fischer.*

42 (Action) JOHNNY SLIDES DOWN WALK Whip and Spur (Allen) 1 3/4 Min.

Musical notation for item 42, featuring a treble clef, a key signature of one flat, and a 2/4 time signature. The tempo marking is *Galop*. The melody consists of eighth and quarter notes. Copyright notice: *Pub by Walter Jacobs.*

43 (Action) JOHNNY JUMPS ON TAXI RUNNING BOARD. Military Galop (Barthman) 2 Min.

Musical notation for item 43, featuring a treble clef, a key signature of one flat, and a 2/4 time signature. The tempo marking is *Galop*. The melody consists of eighth and quarter notes. Copyright notice: *copyr 1925 Hawkes & Son.*

44 (Title) GOOD, WE'RE ON TIME End the Day With a Smile (Glogau) 1/2 Min.

Musical notation for item 44, featuring a treble clef, a key signature of one flat, and a common time signature. The tempo marking is *Mod^{to}*. The melody consists of quarter and half notes. Copyright notice: *copyr 1927 Shapiro Bernstein*

45 (Action) GIRL SPEAKS TO JOHNNY Repeat Johnny Theme No. 2 1 Min.

Musical notation for item 45, featuring a treble clef, a key signature of one flat, and a common time signature. The tempo marking is *Brigantly*. The notation shows a few notes on a five-line staff.

Printed in U. S. A.

THE END

Complete orchestration and single piano parts of each separate number contained hereon, can be purchased from CAMEO MUSIC SERVICE CORPORATION, 315-317 WEST 47TH STREET, NEW YORK CITY.

95:1910:1