

SAMUEL GOLDWYN

PRESENTS

“IN HOLLYWOOD
WITH
Potash and Perlmutter”

A FIRST NATIONAL PICTURE

MUSIC COMPILED BY

EUGENE CONTE

MUSICAL DIRECTOR, PLAZA THEATRE, N. Y. CITY

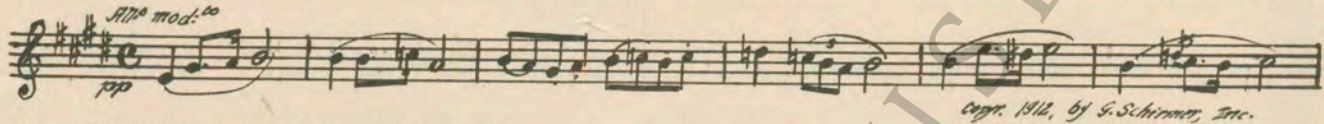
Complete Orchestrations and single parts of all compositions contained herein can be purchased from GEMO
MUSIC SERVICE CORPORATION, 112-118 West 44th Street, New York City


MADE IN U. S. A.




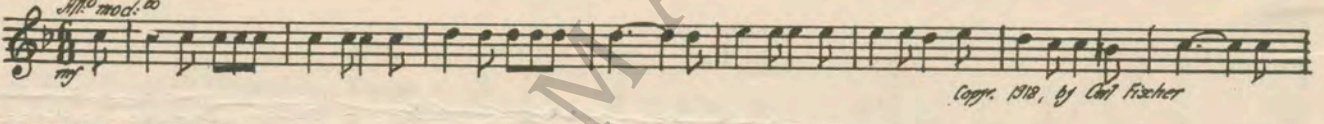
"IN HOLLYWOOD with POTASH and PERLMUTTER"

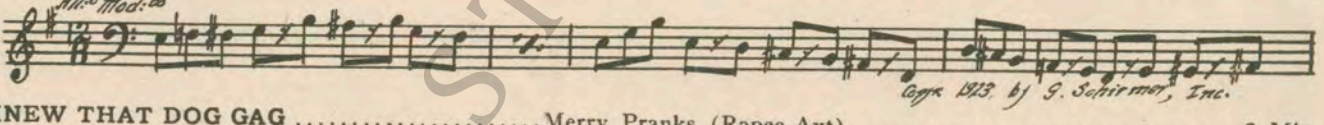
Music compiled by Eugene Conte

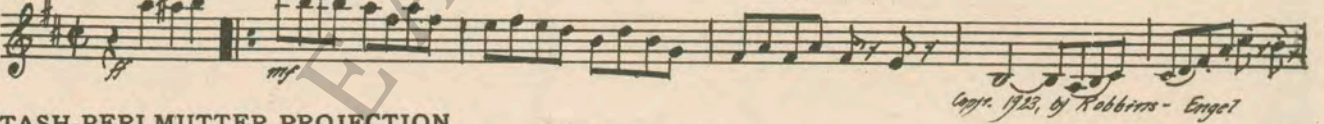
- 1 AT SCREENING Cortège du Serdare (Iwanow) 2 Min.


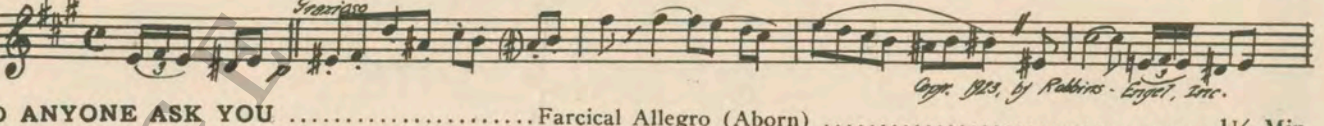
All.^o mod.^{to}
pp
 Copr. 1912, by G. Schirmer, Inc.
- 2 (Title) THEREFORE POTASH AND PERLMUTTER.. Laila (Stoughton) 2 Min.


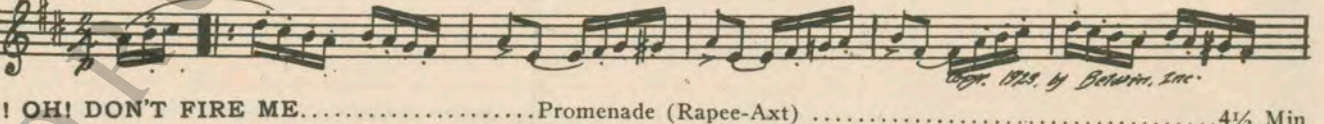
All.^o Mod.^{to}
- 3 (Title) POTASH AND PERLMUTTER SECOND PICTURE Marche Grotesque (Sinding) 2 Min.


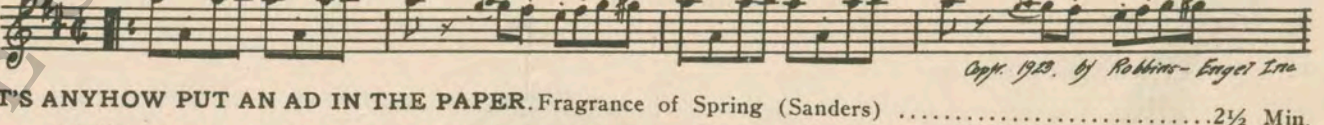
Tempo di Marcia
p
 Copr. 1922, by Walter Jacobs, Inc. Boston
 Copr. 1908, by Carl Fischer
- 4 (Title) THAT'S MY WIFE; SHE PLAYS Solomon Levi "Campus Memories" (Seredy)..... 1½ Min.



All.^o mod.^{to}
mf
 Copr. 1918, by Carl Fischer
- 5 (Title) TO THE LIONS Carnival Grotesque (Savino) 2½ Min.


All.^o Mod.^{to}
 Copr. 1923, by G. Schirmer, Inc.
- 6 (Title) I KNEW THAT DOG GAG Merry Pranks (Rapee-Axt) 2 Min.


All.^o
mf
 Copr. 1923, by Robbins-Engel
- 7 (Title) POTASH-PERLMUTTER PROJECTION ROOM La Piquante (Rapee-Axt) 1½ Min.


Forzando
 Copr. 1923, by Robbins-Engel, Inc.
- 8 (Title) DID ANYONE ASK YOU Farcical Allegro (Aborn) 1½ Min.


All.^o Mod.^{to}
 Copr. 1923, by Behrman, Inc.
- 9 (Title) OH! OH! DON'T FIRE ME..... Promenade (Rapee-Axt) 4½ Min.


All.^o Mo
 Copr. 1923, by Robbins-Engel Inc.
- 10 (Title) LET'S ANYHOW PUT AN AD IN THE PAPER. Fragrance of Spring (Sanders) 2½ Min.


All.^o scherzando
 Copr. 1911, by Behrman, Inc.

11 (Action) **CONSTANCE TALMADGE ENTERS** Vamping Sal (Creamer) 2 Min.

Copyright 1913, by M. Witmark & Sons.

12 (Title) **FIVE YEARS AGO** Suzanne's Secret (Wolf-Ferrari) 4 Min.

Copyright 1911, by G. Schirmer, Inc.

13 (Action) **NORMA TALMADGE ENTERS** Memory Lane (Conrad) 3 Min.

Copyright 1914, by Horms, Inc.

14 (Title) **LAUGH AT ME PERLMUTTER** Dew Drops (Rapee-Axt) 3 Min.

Copyright 1913, by Robbins-Engel, Inc.

15 (Action) **BETTY BLYTHE ENTERS** Bebe (Silver) 2½ Min.

Copyright 1915, by M. Witmark & Sons

16 (Title) **WELL, MISS SIMONDI, SHOW US** Kiki (Savino) 2½ Min.

Copyright 1922, by G. Schirmer, Inc.

17 (Title) **BUT I'M NOT REALLY STUCK ON YOU** Twinkling Star (Lincke) 2 Min.

Copyright 1903, by Edw. B. Marks

18 (Title) **NOW, MR. POTASH, YOU** Perpetual Motion (Borch) 1 Min.

Copyright 1918, by S.M. Berg

19 (Title) **THIS IS BUSINESS** Butterfly Dance (Frey) 2½ Min.

Copyright 1924, by Robbins-Engel, Inc.

20 (Title) **YOU'RE GOING TO PASADENA** Love Came Calling (Zamecnik) 2 Min.

Copyright 1924, by Sam Fox Pub. Co.

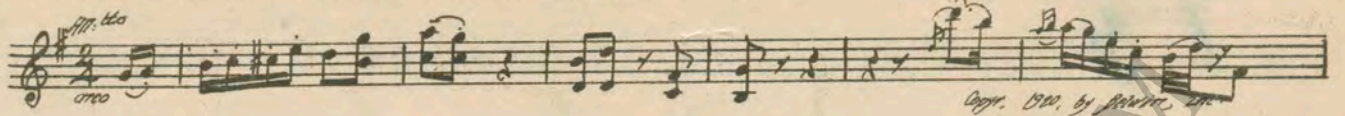
21 (Title) **THAT HOUSE IN PASADENA** The Butterfly's Madrigal (Baron) 3 Min.

Copyright 1924, by M. Baron

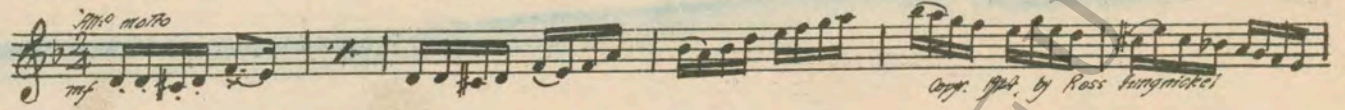
22 (Title) **WHAT DO YOU MEAN** Dobrydziem Dance (Fleischman) 2 Min.

Copyright 1911, by Carl Fischer

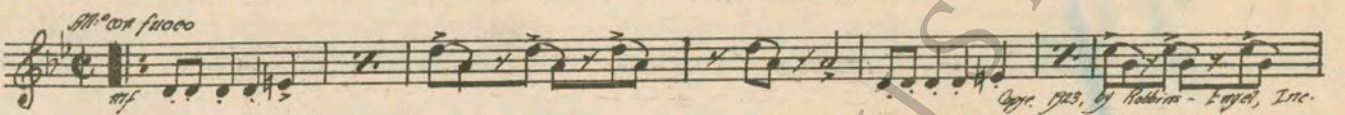
23 (Title) TELL ME MISS SIMONDI IF SHEFrivolette (Baron)2 Min.



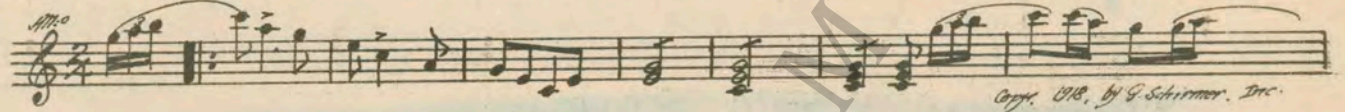
24 (Title) I WOULD LIVE IN A CELLARFurioso (Berge)1 Min.



25 (Title) FOR MY SAKE GOSavage Carnival (Rapee-Axt)4 Min.



26 (Action) POTASH ENTERS AUTOWestern Allegro (Falck)1 Min.

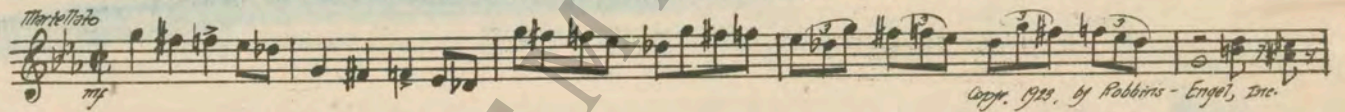


27 (Action) AUTO STOPS IN FRAME OF BILLBOARD....Orchestra Silent1/4 Min.

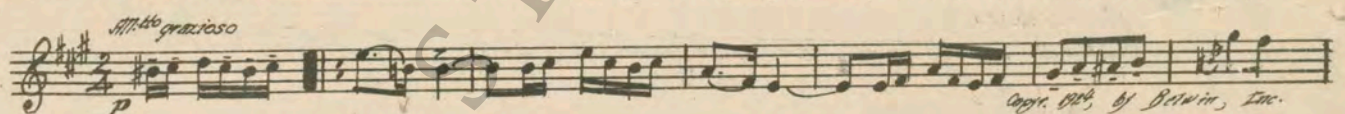
28 (Action) AUTO STARTS OFF AGAINWestern Allegro (Rapee-Axt)1 1/2 Min.



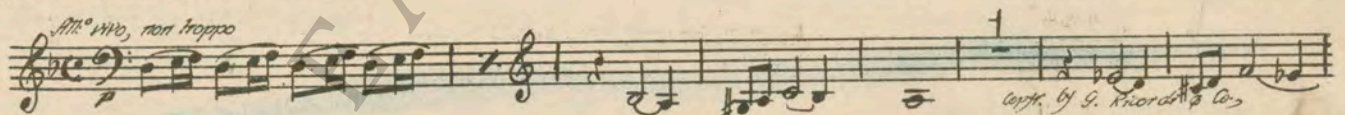
29 (Action) POTASH AND DRIVER JUMP FROM AUTO ..Pollywog's Frolic (Rapee-Axt)3 Min.



30 (Title) SAM, I'VE MADE A MISTAKEFirst Call of Spring (Smith)1 1/2 Min.



31 (Action) FIRE STARTSAngosciosamente (Gabriel Marie)3 Min.

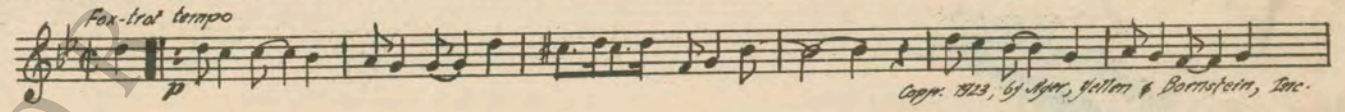


32 (Title) DON'T YOU COME NEAR MEMamma Love Papa (Baer)2 Min.

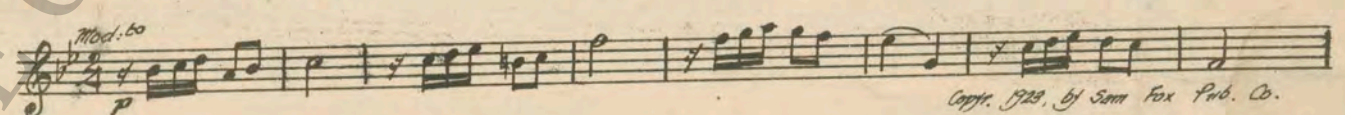


NOTE: Play slowly in ballad style.

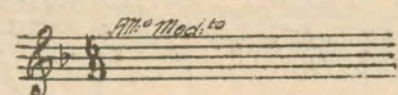
33 (Title) THE FOLLOWING MORNINGMamma Goes Where Papa Goes (Ager)2 Min.



34 (Title) MR. BLANCHARD I'M FROMSerenade Petite (Zamecnik)1 1/2 Min.



35 (Action) POTASH AND PERLMUTTER ALONE.....Repeat No. 4 "Solomon Levi"1 Min.



THE END

Complete Orchestrations and single parts of all compositions contained herein can be purchased from
Cameo Music Service Corporation, 112-118 West 44th Street, New York City

95-1437-1