



THEMATIC MUSIC CUE SHEET
(Pat. Applied for)
JESSE L. LASKY

Presents
A GEORGE MELFORD PRODUCTION
"JAVA HEAD"

With
Leatrice Joy, Jacqueline Logan, Raymond Hatton, George Fawcett and Albert Roscoe
Adapted by Waldemar Young from the Novel by Joseph Hergesheimer
Music Compiled by JAMES C. BRADFORD

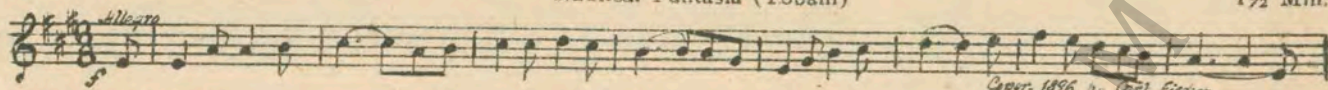


A Paramount Picture

1 AT SCREENING

Nautical Fantasia (Tobani)

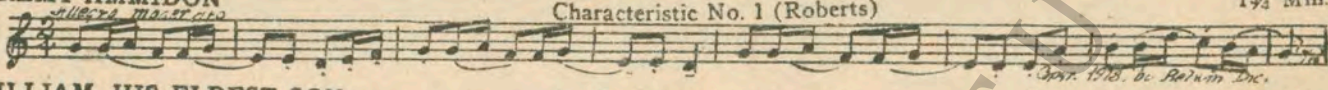
1 1/2 Min.



2 (Title) JEREMY AMMIDON

Characteristic No. 1 (Roberts)

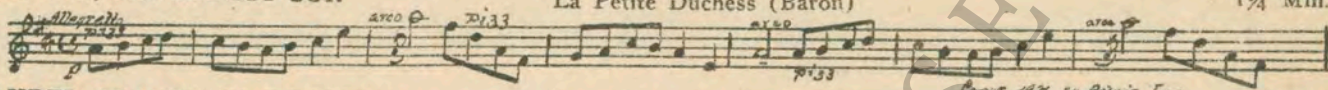
1 3/4 Min.



3 (Title) WILLIAM, HIS ELDEST SON

La Petite Duchesse (Baron)

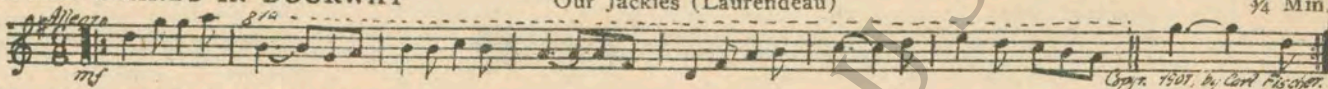
1 1/4 Min.



4 (Action) LAUREL STANDS IN DOORWAY

Our Jackies (Laurendeau)

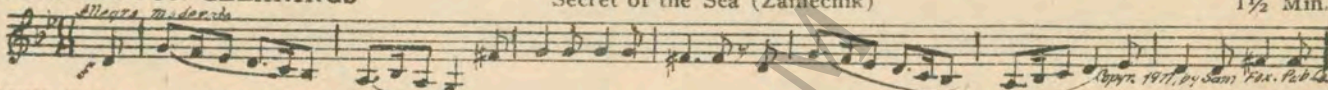
3/4 Min.



5 (Action) INSERT-BOSTON GLEANINGS

Secret of the Sea (Zamecnik)

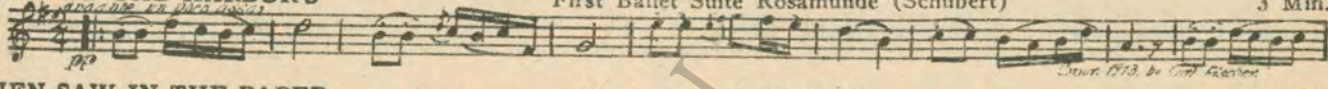
1 1/2 Min.



6 (Title) DOWN BY THE HARBOR'S

First Ballet Suite Rosamunde (Schubert)

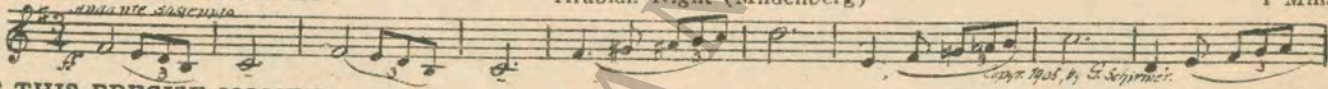
3 Min.



7 (Title) YUEN SAW IN THE PAPER

Arabian Night (Mildenberg)

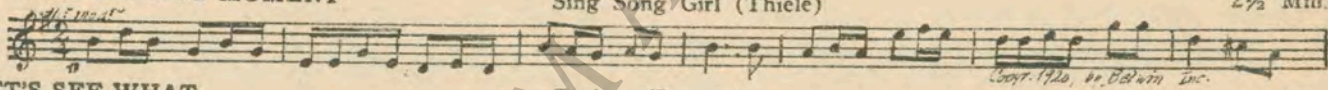
1 Min.



8 (Title) AT THIS PRECISE MOMENT

Sing Song Girl (Thiele)

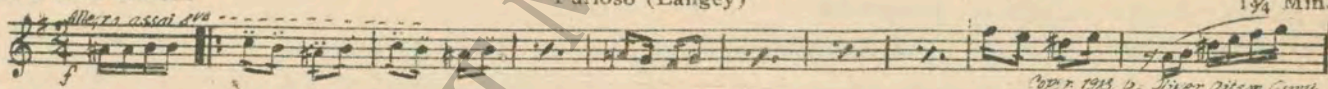
2 1/2 Min.



9 (Title) LET'S SEE WHAT

Furioso (Langey)

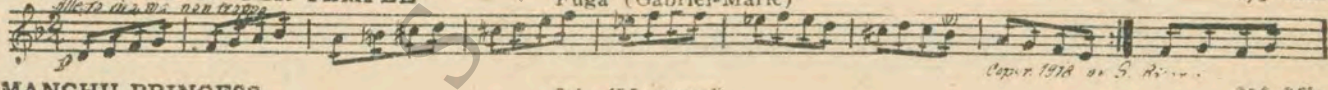
1 3/4 Min.



10 (Action) GERRET & GIRL ENTER TEMPLE

Fuga (Gabriel-Marie)

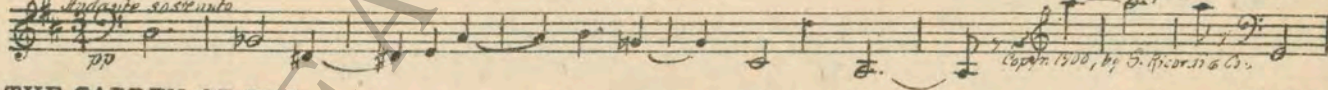
1 1/2 Min.



11 (Title) A MANCHU PRINCESS

Iris (Mascagni)

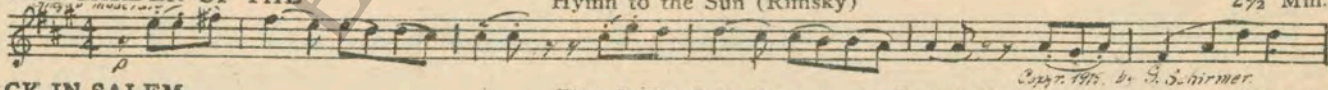
3 1/2 Min.



12 (Title) IN THE GARDEN OF THE

Hymn to the Sun (Rimsky)

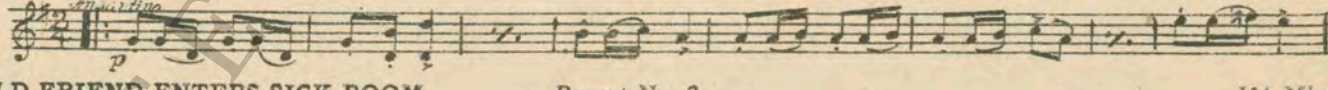
2 1/2 Min.



13 (Title) BACK IN SALEM

First Ballet Suite Rosamunde, Part 2 (Schubert)

3 3/4 Min.



14 (Action) OLD FRIEND ENTERS SICK ROOM

Repeat No. 2

1 3/4 Min.

15 (Title) AS THE LATE SUMMER

Twilight Hour (Savino)

2 Min.



16 (Title) ON A SUMMER DAY

Before the Mast (Laurendeau)

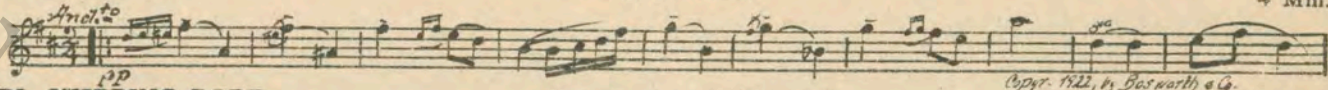
2 3/4 Min.



17 (Title) WELL, NETTIE

Waiting (Ancliffe)

4 Min.



18 (Action) GIRL SKIPPING ROPE

Premier Amour (Benoist)

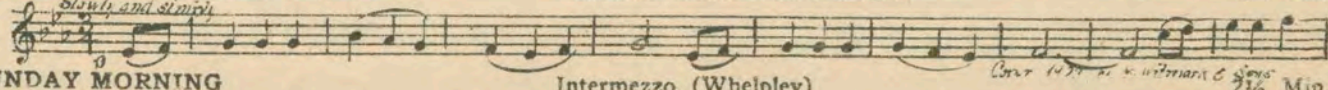
2 1/2 Min.



19 (Action) NETTIE ALONE IN BEDROOM

THEME: Smilin' Thru (Penn)

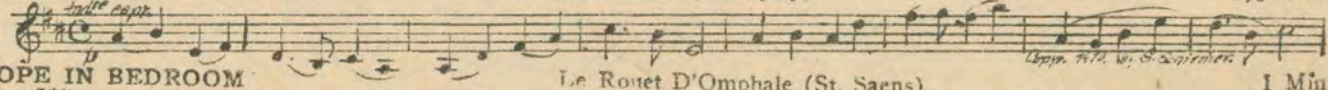
1 1/2 Min.



20 (Title) SUNDAY MORNING

Intermezzo (Whelpley)

2 1/2 Min.



21 (Action) DOPE IN BEDROOM

Le Rouet D'Omphale (St. Saens)

1 Min.



- 22 (Action) YUEN AT MIRROR Chinese Lullaby (Bowers) 1 Min.
Moderato
- 23 (Action) FAMILY LEAVE HOUSE FOR CHURCH Evening Song (Lind) 3¼ Min.
Moderato
- 24 (Action) THEY ENTER CHURCH Largo (Haendel), (Organ Solo) 1 Min.
Andante
- 25 (Action) DOPE IN BED HAS VISION Romance (Baron) 1¼ Min.
Andante sostenuto
- 26 (Title) THE ALLURING IMAGE Penelope's Garden (Ancliffe) 2½ Min.
Moderato
- 27 (Action) NETTIE SITTING ON STAIRS Kunihild (Kistler) 1¾ Min.
Andante serioso
- 28 (Title) 'T WAS HALLOWE'EN With Powdered Wig and Skirt (Severac) 1 Min.
Minuetto
- 29 (Action) NETTIE PREPARING COSTUME Tarantella (Jacchia) 3 Min.
Allero molto
- 30 (Title) WITCH CAN'T TELL FORTUNE Hallowe'en Episode (Lake) 2 Min.
Andante misurato
- 31 (Action) BOY PULLS WITCH'S HAT OFF Will You Remember (Romberg) 1½ Min.
Alleretto
- 32 (Action) YUEN ALONE AT FIRESIDE Repeat No. 22 ½ Min.
- 33 (Action) FLASH-BACK NETTIE & GARRET Repeat Theme No. 19 1½ Min.
- 34 (Title) AT SALEM COMMON The Diplomat March (Sousa) 1 Min.
- 35 (Title) LOOK, GRANDAD, Hurry No. 4 (Langey) 1¼ Min.
Marcia
- 36 (Title) DESTINY Reverie (Schutt) 5 Min.
Allero
- 37 (Action) DOPE ENTERS ROOM An Indian Legend (Baron) 2¾ Min.
Andante con moto
- 38 (Action) GARRET ENTERS NETTIE'S ROOM At Dawning (Cadman) 1¼ Min.
Moderato
- 39 (Title) I TELL YOU Spring Song (Mirovitch) 3 Min.
Allero con passione
- 40 (Action) DOPE LEAVES YUEN Andante Melodioso (Rachmaninoff) 3 Min.
- 41 (Action) YUEN STOPS AT NETTIE'S GATE Dreams of Love (Liszt) 2¾ Min.
Andante
- 42 (Title) HIS DRUG SOAKED MIND Adagio Pathetique (Godard) 4 Min.
Adagio quasi sostenuto
- 43 (Title) BOUND FOR THE COAST Repeat Theme No. 19 1¼ Min.

THE END

Complete Orchestrations and single parts of all compositions contained herein can be purchased from
 CAMEO MUSIC PUBLISHING CO., INC., 112-118 West 44th Street, New York City

95: 1956:1