

Shuns & Fin
H/1-2.

Thematic Music Cue Sheet

M. J. MINTZ (PATENT)
JULY 31, 1923.

EDWIN CAREWE
presents
"JOANNA"
with
Dorothy Mackail and Jack Mulhall
Directed by Edwin Carewe
Music compiled by James C. Bradford
A FIRST NATIONAL PICTURE

1 AT SCREENING Autumn Voices (Bassett) 1/2 Min

And^{te}
 Copyright, 1925 by Belwin Inc.

2 (Title) NEW YORK L'Heure de L'Aperitif (Coventry) 1 3/4 Min

And^{te} Capriccioso
 Copyright, 1920 by J. R. Lafleur.

3 (Title) FRANCIS BRANDON Blue Law Blues (Lake) 1 1/2 Min.

Mod^{to}
 Copyright, 1921 by Carl Fischer.

4 (Title) A LODGING HOUSE NOTE: Play a la burlesque. Smile All the While (Ager) 2 1/2 Min

Mod^{to}
 Copyright, 1925 by Ager Helene Bernstein

5 (Action) JOHN AND JOANNA MEET AT FOOT OF STAIRS In the Woodlands (Ellis) 1 1/2 Min.

Allth
 Copyright, 1925 by Emil Fischer.

6 (Action) JOANNA SEES MODEL OF HOUSE I Love a Little Cottage (O'Hara) 1 Min.

Slowly
 Copyright, 1922 by Sam Fox Pubs Co.

7 (Title) YOU TALK LIKE BILLY SUNDAY? So That's the Kind of a Girl You Are (Rose) 1 1/2 Min.

Mod^{to}
 Copyright, 1925 by Irv. Berlin Inc.

8 (Title) SEVEN DOLLARS ISN'T MUCH THEME: Remember (Berlin) 3/4 Min.

Mod^{to}
 Copyright, 1925 by Irving Berlin.

D. Joanna and John sit at Table

9 (Action) JOANNA AND JOHN SIT AT TABLE.....Tea for Two (Youmans)1 Min

Musical notation for 'Tea for Two' in G major, 2/4 time, marked *Mod^{to}*. The melody is written on a single staff. Copyright 1924 by Harms Inc.

10 (Title) THE NEXT MORNINGThe Kinky Kids Parade (Donaldson)2 Min.

Musical notation for 'The Kinky Kids Parade' in G major, 2/4 time, marked *Mod^{to}*. The melody is written on a single staff. Copyright 1925 by Leo Feist Inc.

11 (Title) THE SAVINGS BANKAubade Printaniere (Lacombe)3½ Min.

Musical notation for 'Aubade Printaniere' in G major, 2/4 time, marked *All^{to}*. The melody is written on a single staff. Copyright Carl Fischer.

12 (Action) JOANNA HANDED CASHSo I Took the Fifty Thousand Dollars (Gumble).....1 Min.

Musical notation for 'So I Took the Fifty Thousand Dollars' in G major, 2/4 time, marked *Fox Trot*. The melody is written on a single staff. Copyright 1922 by J. H. Remick & Co.

13 (Action) FLASH-BACK TO MODISTE SHOP Oh Bov, What a Girl (Bessinger)1¾ Min.

Musical notation for 'Oh Bov, What a Girl' in G major, 2/4 time, marked *Mod^{to}*. The melody is written on a single staff. Copyright 1925 by A. J. Stasny.

14 (Title) ALL DAY JOANNA Fooling (Klages)2½ Min.

Musical notation for 'Fooling' in G major, 2/4 time, marked *Mod^{to}*. The melody is written on a single staff. Copyright 1925 by A. J. Stasny.

15 (Title) A PRETTY GIRL A Mysterious Event (Zamecnik)1 Min

Musical notation for 'A Mysterious Event' in G major, 2/4 time, marked *All^{to}*. The melody is written on a single staff. Copyright 1925 by Sam Fox Pub. Co.

16 (Title) THE BLACK MASK Sweet Georgia Brown (Pinkard)3 Min

Musical notation for 'Sweet Georgia Brown' in G major, 2/4 time, marked *Mod^{to}*. The melody is written on a single staff. Copyright 1925 by J. H. Remick & Co.

17 (Action) TEDDY AND ELDERLY WOMAN AT TABLE..She May Have Seen Better Days (Lake)½ Min

Musical notation for 'She May Have Seen Better Days' in G major, 3/4 time, marked *Valse*. The melody is written on a single staff. Copyright Carl Fischer.

18 (Action) TEDDY LEAVES HER Clap Hands! Here Comes Charley (Meyer)1¼ Min.

Musical notation for 'Clap Hands! Here Comes Charley' in G major, 2/4 time, marked *Mod^{to}*. The melody is written on a single staff. Copyright 1925 by Ager, Yellen & Bornstein.

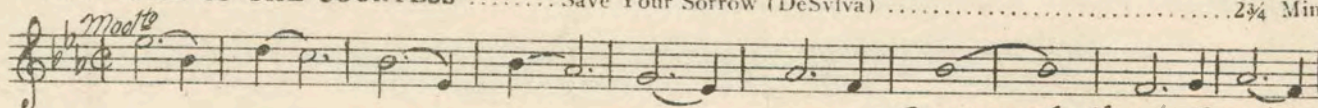
19 (Action) BANKER AT TABLELe Ruisseau (Brauford-Boutelje)1 Min.

Musical notation for 'Le Ruisseau' in G major, 2/4 time, marked *All^{to} con moto*. The melody is written on a single staff. Copyright 1925 by Robbins Engel Inc.

20 (Title) FOR THREE DAYSAll Alone (Berlin)2 Min.

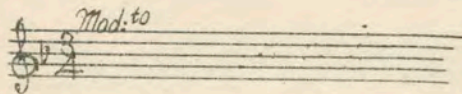
Musical notation for 'All Alone' in G major, 3/4 time, marked *Valse Lento*. The melody is written on a single staff. Copyright 1924 by Irving Berlin.

21 (Title) AT THE HOME OF THE COUNTESS Save Your Sorrow (DeSilva) 2¼ Min.

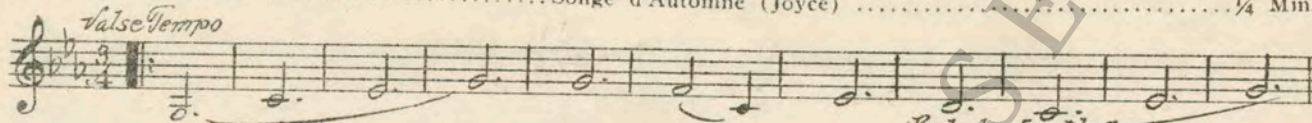


Copyr. 1925 by Shapiro Bernstein.

22 (Action) JOHN GREETES JOANNA Repeat Theme No. 8 1½ Min.

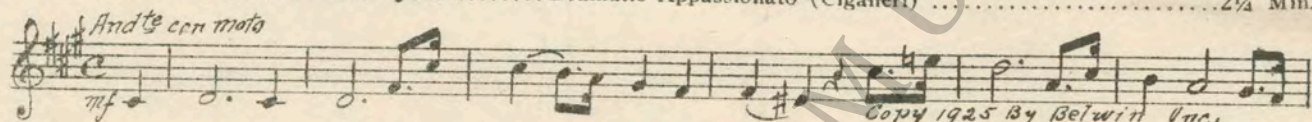


23 (Action) COUNTESS DANCING Songe d'Automne (Joyce) ¼ Min.



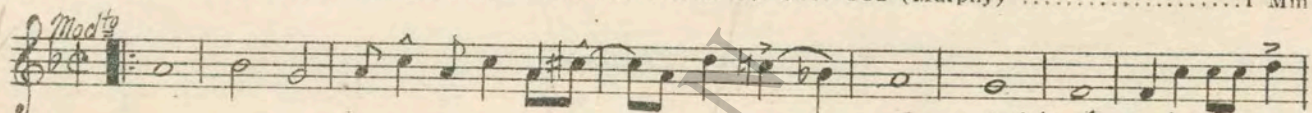
Pub. by E. M. Ascher

24 (Action) FLASH-BACK TO JOANNA AND JOHN Dramatic Appassionato (Ciganeri) 2¼ Min.



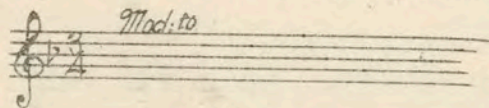
Copy 1925 By Belwin Inc.

25 (Action) JOHN LEAVES HURRIEDLY I'm All Broken Up Over You (Murphy) 1 Min.

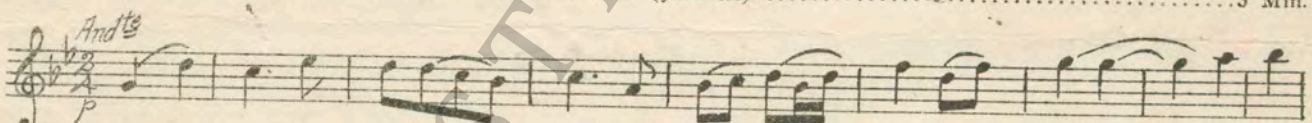


Copyr. 1924 by Leo Feist.

26 (Action) JOHN ENTERS DARK ROOM Repeat Theme No. 8 ¼ Min.

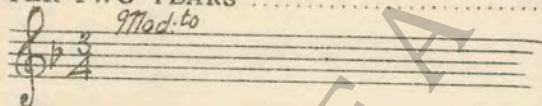


27 (Title) AFTER A SLEEPLESS NIGHT Berceuse (Jarnfelt) 3 Min.



Copyr. 1910 by Carl Fischer.

28 (Title) AFTER TWO YEARS Repeat Theme No. 8 1 Min.

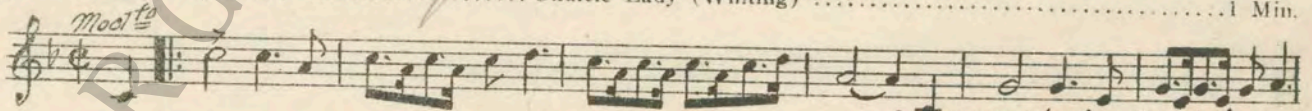


29 (Action) COUNTESS ENTERS ROOM On the Volga (Krein) ¾ Min.



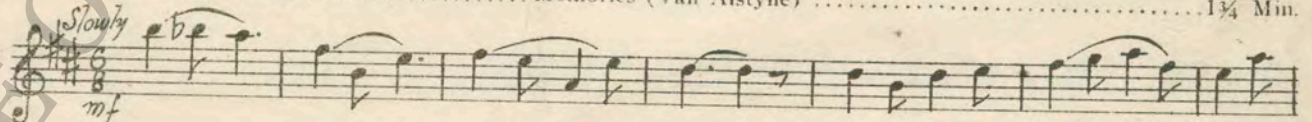
Copyr. 1916 by Hawkes & Sons

30 (Action) JOANNA JOINS FRIENDS Ukulele Lady (Whiting) 1 Min.



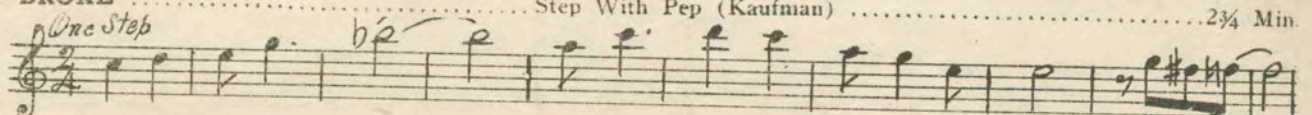
Copyr. 1925 by Dr. Berlin Inc.

31 (Action) JOHN STARTS TO SPEAK Memories (Van Alstyne) 1¼ Min.



Copyr. 1915 by Remick & Co

32 (Title) I'M BROKE Step With Pep (Kaufman) 2¼ Min.



Copyr. 1916 E. B. Marles Co

33 (Action) NIGHT SCENE ON BEACH By the Beautiful Sea (Carroll) 1 Min.

Musical notation for "NIGHT SCENE ON BEACH" by the Beautiful Sea (Carroll). The score is in 2/4 time, marked *Marcia* and *mp*. Copyright 1911 by Schapiro Bernstein.

34 (Title) YOU'VE GOT IT ON THEM ALL Omens (Schad) 3 Min.

Musical notation for "YOU'VE GOT IT ON THEM ALL" by Omens (Schad). The score is in 2/4 time, marked *All^o mod^o conritmo* and *mp*. Copyright 1926 by Geo H Sanders.

35 (Action) JOANNA STARTS WILD AUTO RIDE Dance of the Furies (Gluck) 2 3/4 Min.

Musical notation for "JOANNA STARTS WILD AUTO RIDE" by Dance of the Furies (Gluck). The score is in 3/4 time, marked *Vivace* and *p*. Copyright 1928, Sonneman Music Co.

36 (Title) YOU'RE GOING TO STATION Dante's Inferno (Borch) 2 Min.

Musical notation for "YOU'RE GOING TO STATION" by Dante's Inferno (Borch). The score is in 2/4 time, marked *All^o* and *mf*. Copyright 1921 by Belwin Inc.

37 (Action) JOHN GREET'S JOANNA IN JAIL Defiant Love (Schad) 3 Min.

Musical notation for "JOHN GREET'S JOANNA IN JAIL" by Defiant Love (Schad). The score is in 3/8 time, marked *All^o appassionato*. Copyright 1925 by Geo H. Sanders.

38 (Title) KILLED, RIDICULOUS Around the Sundial (Castillo) 1 3/4 Min.

Musical notation for "KILLED, RIDICULOUS" by Around the Sundial (Castillo). The score is in 2/4 time, marked *All^o* and *mf*. Copyright 1920 by Walter Jacobs.

39 (Action) JOHN AND REPORTER ON STREET Restless Bows (Srawley) 3/4 Min.

Musical notation for "JOHN AND REPORTER ON STREET" by Restless Bows (Srawley). The score is in 2/4 time, marked *Rather quick with impatience*. Copyright 1925 by Geo H. Sanders.

40 (Title) THE FOLLOWING MORNING What the Pond Lilies Whispered (Betts) 3 3/4 Min.

Musical notation for "THE FOLLOWING MORNING" by What the Pond Lilies Whispered (Betts). The score is in 2/4 time, marked *Penseroso* and *p*. Copyright 1923 by Emil Ascher.

41 (Title) BEFORE ACCEPTING JIM BRAYDON'S WAGER Love's Old Sweet Song (Molloy) 2 1/4 Min.

Musical notation for "BEFORE ACCEPTING JIM BRAYDON'S WAGER" by Love's Old Sweet Song (Molloy). The score is in 3/4 time, marked *And^{te} Mod^o* and *p*. Copyright 1923 by Emil Ascher.

42 (Action) BUTLER ENTERS ROOM Fragrance (Ancliffe) 1 Min.

Musical notation for "BUTLER ENTERS ROOM" by Fragrance (Ancliffe). The score is in 2/4 time, marked *All^o* and *mf*. Copyright 1920 by Hawkes & Son.

43 (Action) JOHN TAKES SEAT BESIDE JOANNA ON SOFA Repeat Theme No. 8 1 1/4 Min.

Musical notation for "JOHN TAKES SEAT BESIDE JOANNA ON SOFA" by Repeat Theme No. 8. The score is in 3/4 time, marked *Mod^o*.

THE END

Country of Origin, U. S. A.

Complete Orchestrations and single parts of all compositions contained herein can be purchased from CAMEO MUSIC SERVICE CORPORATION, 112-118 West 44th Street, New York City