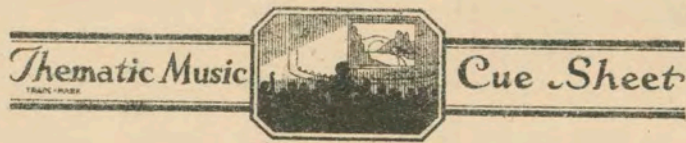


Thurs & Fri
July 29-30



M. J. MINTZ (PATENT)
JULY 31, 1923.

RICHARD BARTHELMESS

"JUST SUPPOSE"

Music compiled by James C. Bradford
A FIRST NATIONAL PICTURE

1 AT SCREENING Parade of the Wooden Soldiers (Jessel) 2 Min.

Mod^{te}

Copyright 1922 E. B. Marks

2 (Action) GENERAL APPEARS GENERAL THEME: The Bulgarians from "Chocolate Soldier" (Straus) 1 Min.

Marcia

Copyright 1909 J. H. Remick Co

3 (Action) GENERAL CLOSES DOOR—LEAVES HIS MAJESTY Prelude (Jarnfelt) 1 1/4 Min.

All^o p^{izz}

Copyright 1913 G. Schirmer

4 (Title) PRINCE RUPERT ALSO HAD Jollity (Zamecnik) 1 1/2 Min.

All^o

Copyright 1925 Sam Fox Pub. Co

5 (Action) GENERAL ENTERS Repeat General Theme No. 2 1 Min.

Marcia

6 (Action) RUPERT DRESSES—MARCHES FROM ROOM. Repeat No. 1 "Parade of the Wooden Soldiers" 1 Min.

Mod^{te}

7 (Action) EXTERIOR OF MISSION Bal de Noces (Burgmein) 2 Min.

All^o

Copyright 1912 G. Schirmer

8 (Title) ONCE UPON A TIME Fairy Tales (Komzak) 2 Min.

All^o

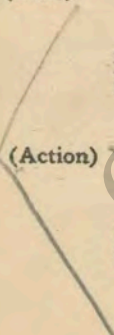
Copyright 1911 Carl Fischer

9 (Action) RUPERT SEES LINDA LOVE THEME: To the Land of My Own Romance (Herbert) 3/4 Min.

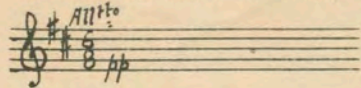
Allegro lento

Copyright 1911 Witmark & Sons

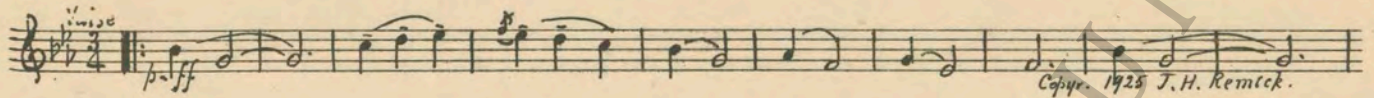
X



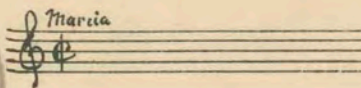
10 (Action) RUPERT STARTS SPEECH ONCE MORE Repeat No. 8 "Fairy Tales" ¾ Min.



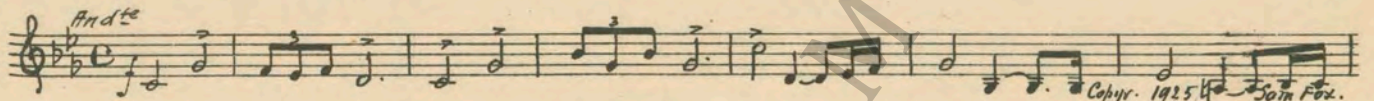
11 (Title) FOR THE FIRST TIME Sometime (Kahn) 1¼ Min.



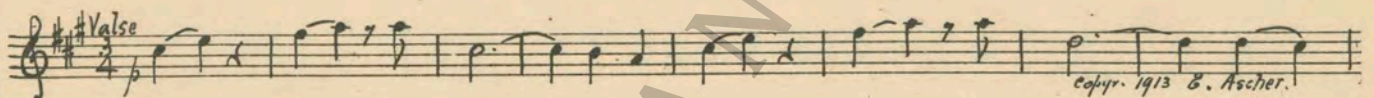
12 (Action) GENERAL ENTERS Repeat General Theme No. 2 ½ Min.



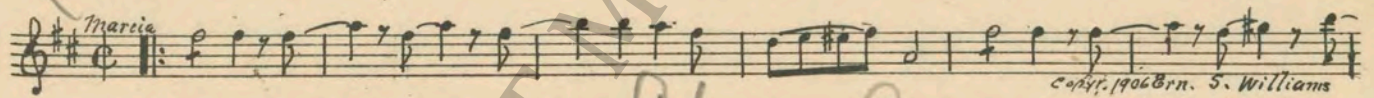
13 (Title) YOU HAVE HUMILIATED ME Cup of Bitterness (Zamecnik) ¾ Min.



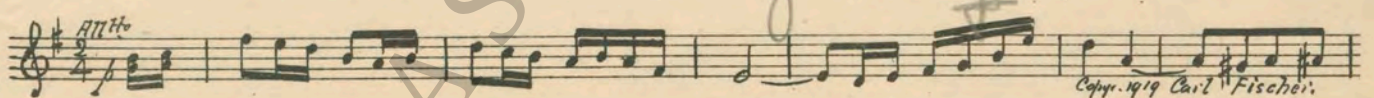
14 (Title) PRINCE RUPERT AS THE YOUNGEST SON.. Fiancailles Valse (Wesly) 1 Min.



15 (Title) PRINCE RUPERT ARRIVES National Emblem March (Bagley) 1 Min.



16 (Title) IN AMERICA PRINCE RUPERT FOUND OUT. American from "Silhouettes" (Hadley) 1¾ Min.



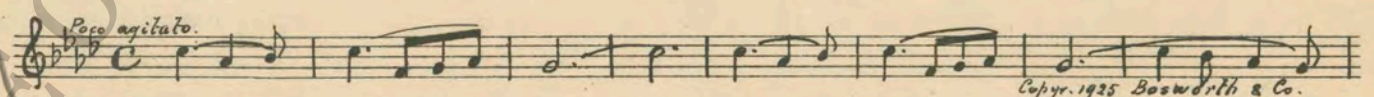
17 (Title) THE PRINCE'S FIRST TASTE OF FREEDOM. Polo Rag (Romberg) 2 Min.



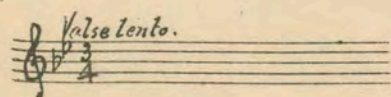
18 (Title) HEADING BACK TOWARD Aid de Ballet (Hadley) 1¼ Min.



19 (Action) BALL STRIKES LINDA Douces Larmes (Barbirolli) ½ Min.



20 (Action) LINDA AWAKENS Repeat Love Theme No. 9 1¾ Min.



NOTE: Play first movement only.

21 (Title) MOTHER. I'D LIKE TO What the Pond Lilies Whispered (Betts) 1¼ Min.

Musical notation for item 21: Treble clef, 2/4 time, key signature of one sharp (F#), tempo marking *And^{te}*. Copyright 1923 Emil Ascher.

22 (Title) THE GAME WAS CONTINUED Tea for Two (Youmans) 1 Min.

Musical notation for item 22: Treble clef, 2/4 time, key signature of one sharp (F#), tempo marking *Mod^{to}*. Copyright 1924 Harms Inc.

23 (Title) THE CAR IS READY Fleurette d'Amour (Fletcher) ¾ Min.

Musical notation for item 23: Treble clef, 2/4 time, key signature of one sharp (F#), tempo marking *All^{to}*, dynamic marking *mf*. Copyright 1922 Hawkes & Son.

24 (Action) RUPERT FAKES HEART ATTACK Scherzo (Mendelssohn) 1¼ Min.

Musical notation for item 24: Treble clef, 2/4 time, key signature of one sharp (F#), tempo marking *All^o vivace*, dynamic marking *pp*. Copyright 1920 G. Schirmer.

25 (Title) TONY. ONE OF US COULD Repeat Love Theme No. 9 2 Min.

Musical notation for item 25: Treble clef, 2/4 time, key signature of one sharp (F#), tempo marking *Valso lento*.

26 (Action) MRS. STAFFORD AND TONY RETURN TO ROOM Columbine (Smith) 1 Min.

Musical notation for item 26: Treble clef, 2/4 time, key signature of one sharp (F#), tempo marking *Vivo*, dynamic marking *f*, *8va* marking. Copyright 1920 Carl Fischer.

27 (Title) GOOD-NIGHT Repeat Love Theme No. 9 1 Min.

Musical notation for item 27: Treble clef, 2/4 time, key signature of one sharp (F#), tempo marking *Valso lento*.

28 (Action) GENERAL AND MINISTERS CONFERRING.. Repeat General Theme No. 2 1¼ Min.

Musical notation for item 28: Treble clef, 2/4 time, key signature of one sharp (F#), tempo marking *Marcia*.

29 (Title) MORNING At Dawning (Cadman) ¾ Min.

Musical notation for item 29: Treble clef, 2/4 time, key signature of one sharp (F#), tempo marking *mod^{to}*. Copyright 1919 Oliver Ditson.

NOTE: Play "PP" con sordini strings only.
30 (Action) GENERAL ENTERS RUPERT'S ROOM Tragic Andante (Sibelius) 1 Min.

Musical notation for item 30: Treble clef, 2/4 time, key signature of one sharp (F#), tempo marking *And^{te}*, dynamic marking *mf*. Copyright 1925 Schlesinger.

31 (Action) GENERAL LEAVES ROOM Love Song (Wright) 3 Min.

Musical notation for item 31: Treble clef, 2/4 time, key signature of one sharp (F#), tempo marking *And^{no}*. Copyright 1920 G. Schirmer.

32 (Title) THROUGH LAST NIGHT Andante Cantabile (Tschaikowsky) 3½ Min.

Musical notation for 'THROUGH LAST NIGHT' in G major, 3/4 time, marked *Andte*. Copyright 1900 Carl Fischer.

33 (Action) RUPERT SPEAKS TO LINDA IN GARDEN Repeat Love Theme No. 9 1½ Min.

Musical notation for 'RUPERT SPEAKS TO LINDA IN GARDEN' in G major, 3/4 time, marked *Valse lento*.

34 (Action) LONG SHOT OF HOUSE-MACHINES DRIVE AWAY All Alone (Berlin) 1½ Min.

Musical notation for 'LONG SHOT OF HOUSE-MACHINES DRIVE AWAY' in G major, 3/4 time, marked *Valse lento*. Copyright 1924 Irving Berlin.

35 (Title) BACK IN KORONIA Festival March (Borch) 1½ Min.

Musical notation for 'BACK IN KORONIA' in G major, 2/4 time, marked *Maestoso* and *mf*. Copyright 1917 G. Schirmer.

36 (Title) SUMMERING AGAIN Just A' Wearyin' For You (Bond) 1¼ Min.

Musical notation for 'SUMMERING AGAIN' in G major, 2/4 time, marked *Andte*. Copyright 1908 A. Delanais Co.

37 (Title) THE TWENTIETH OF THE MONTH Coronation March (Kretschmer) 1¼ Min.

Musical notation for 'THE TWENTIETH OF THE MONTH' in G major, 2/4 time, marked *March*. Copyright 1888 Carl Fischer.

38 (Title) THE WHOLE POPULACE IS WITHOUT Ondes Mysterieuses (Franceschi) 2½ Min.

Musical notation for 'THE WHOLE POPULACE IS WITHOUT' in G major, 2/4 time, marked *Allo modte*.

39 (Title) WELL HERE WE GO Comedy Galop (Fahrbach) 1 Min.

Musical notation for 'WELL HERE WE GO' in G major, 2/4 time, marked *Galop*. Copyright 1925 Hawkes & Son.

40 (Action) LINDA SEATED ON BENCH ALONE Yearning (Davis) 1 Min.

Musical notation for 'LINDA SEATED ON BENCH ALONE' in G major, 3/4 time, marked *Fox Trot*. Copyright 1925 Irving Berlin.

41 (Action) LINDA SEES RUPERT Repeat Love Theme No. 9 1 Min.

THE END

Country of Origin, U. S. A.

MUSIC SERVICE CORPORATION, 112-118 West 44th Street, New York City
Complete Orchestrations and single parts of all compositions contained herein can be purchased from CAMEO