

284

Thematic Music Cue Sheet

M. J. MINTZ (PATENT)
JULY 31, 1923.

ADOLPH ZUKOR and JESSE L. LASKY

present

J. M. BARRIE'S

"A KISS FOR CINDERELLA"

A HERBERT BRENON PRODUCTION

with

Betty Bronson, Tom Moore and Esther Ralston

Screen play by Willis Goldbeck and Townsend Martin

Music compiled by James C. Bradford

Footage 9621 feet



A Paramount Picture

- 1 AT SCREENING Mock Morris (Grainger) 1 Min.

All.^o

mp *Sleeping Beauty*
 Copyright 1915, by G. Schirmer.

- 2 (Title) LONDON Storm or Fire Music (Haines) 1 1/2 Min.

All.^o

Copyright 1923, by Hawkes & Son.

- 3 (Action) POLICEMAN ON STAIRS La Foret Perfidie (Gabriel Marie) 1 Min.

NOTE: Catch explosions, propeller effects, etc.
All.^o m. terioso

p Copyright 1909, by Rouart Lerolle

- 4 (Action) MR. BODIE AWAKENS Shepherd's Hey (Grainger) 4 Min.

Presto

Copyright 1922, by G. Schirmer, Inc.

- 5 (Title) IT'S PLAIN, THE FIRST THING TO FIND OUT IS POLICEMAN THEME: Marche Miniature (Jacobi) 2 Min.

Marcia

p Copyright 1916, by G. Schirmer, Inc.

- 6 (Action) CINDERELLA OPENS DOOR Humoresque (Tschaikowsky) 2 1/2 Min.

Molto

Copyright 1922, by Carl Fischer.

- 7 (Title) MR. BODIE, HOW WOULD YOU GET BY.... Repeat Bohemian Theme No. 5 1 Min.

Marcia

NOTE: Always start after the introduction; play "PP" and slowly as a misterioso.

8 (Title) HAVE YOU EVER SEEN THE PRINCE..... Columbine (Ring)1½ Min.

Handwritten: *Vivaldi*
Musical notation for item 8. Includes tempo marking *Tempo molto* and dynamic marking *mf*. Copyright: *Copyr. by Chappell & Co.*

9 (Action) CINDERELLA SEES POLICEMAN'S HELMET. Repeat No. 3 "La Foret Perfide"2½ Min.

Handwritten: *Devils (3)*
Musical notation for item 9. Includes tempo marking *All.^{to} misterioso*.

10 (Title) NOTE: Play first movement only and repeat. ONE E-S-P-I-O-N-A-G-E Tambourin (Gretry-Mottl)1 Min.

Handwritten: *See Suite No. 1*
Musical notation for item 10. Includes tempo marking *Presto* and dynamic marking *pp*. Copyright: *Copyr. 1914, by Carl Fischer.*

11 (Action) POLICEMAN OPENS DOOR—MR. BODIE ENTERS Repeat No. 4 "Shepherd's Hey"1¼ Min.

Handwritten: *Wagner B 1*
Musical notation for item 11. Includes tempo marking *Presto*.

12 (Action) CINDERELLA HOLDS OUT HAND WITH COINS CINDERELLA THEME: The Swan (St. Saens)1 Min.

Handwritten: *S. Saens 4*
Musical notation for item 12. Includes tempo marking *Adagio* and dynamic marking *p*. Copyright: *Copyr. 1906, by Carl Fischer.*

13 (Action) CINDERELLA RUSHES FROM ROOM Repeat Policeman Theme No. 51 Min.

Handwritten: *Prokofiev March*
Musical notation for item 13. Includes tempo marking *Moderato*.

14 (Action) NOTE: Catch fake footsteps of Mr. Bodie and Policeman as they tramp out of room. THEY LEAVE—CINDERELLA APPEARS WITH HAT ON L'Encore (Herbert)1 Min.

Handwritten: *Wagner 4*
Musical notation for item 14. Includes tempo marking *M. d. 20* and dynamic marking *p*. Copyright: *Copyr. 1910, by Wm. Witmark & Son*

15 (Action) CINDERELLA STARTS TO DANCE A Little Peach (Colin)½ Min.

Handwritten: *Wagner 4*
Musical notation for item 15. Includes tempo marking *M. d. 20* and dynamic marking *p*. Copyright: *Copyr. 1917, by Hawkes & Son.*

16 (Action) WOMAN APPEARS ON STAIRS Dramatic Allegro (Savino)2½ Min.

Handwritten: *Francesca*
Musical notation for item 16. Includes tempo marking *All.^o* and dynamic marking *pp*. Copyright: *Copyr. 1933, by G. Schirmer, Inc.*

17 (Title) THE PENNY FRIEND Wot' Cher (Luz)2½ Min.

Handwritten: *Prokofiev*
Musical notation for item 17. Includes tempo marking *All.^o Mod.^{to}* and dynamic marking *mf*. Copyright: *Copyr. 1920, by Photo Play Music Co.*

Palace

5

18 (Action) MAN LEAVES ROOM The Irish Washerwoman (Langey) 1¼ Min.

Handwritten: *Recit*
Musical notation for "The Irish Washerwoman" (Langey).
Copr. 1913, by G. Schirmer, Inc.

19 (Action) OLD WOMAN LEAVES Pleading Love Theme (Bradford) 1¼ Min.

Handwritten: *And: te*
Musical notation for "Pleading Love Theme" (Bradford).
Copr. 1911, by Belwin, Inc.

20 (Action) DESPONDENT WOMAN LEAVES Mrs. 'Awkins (Luz) 1 Min.
NOTE: You may substitute here if you wish, "Oh Rest in the Lord."

Handwritten: *And: te con moto*
Musical notation for "Mrs. 'Awkins (Luz)".
Copr. 1920, by Photo Play Music Co.

21 (Action) MEAN WOMAN LEAVES Repeat Cinderella Theme No. 12 ¾ Min.

Handwritten: *Adagio*
Musical notation for "Repeat Cinderella Theme No. 12".

22 (Action) BEARDED MAN ENTERS March Burlesque (Cillet) 2¼ Min.

Handwritten: *Marcia*
Musical notation for "March Burlesque" (Cillet).
Copr. 1910, by Errock & Co.

23 (Action) CINDERELLA PULLS OFF MAN'S BEARD... Appassionato No. 47 (Berge) ½ Min.

Handwritten: *Mod: to*
Musical notation for "Appassionato No. 47" (Berge).
Copr. 1918, by S. M. Berg.

24 (Title) THERE JUST ME TRYING TO DO ME BIT... Repeat Cinderella Theme No. 12 ¾ Min.

Handwritten: *Adagio*
Musical notation for "Repeat Cinderella Theme No. 12".

25 (Title) THIS IS GLADYS Rule Britannia (Loesch) ¼ Min.

Handwritten: *Maestoso*
Musical notation for "Rule Britannia" (Loesch).
Copr. by Carl Fischer.

NOTE: Play very slowly.

26 (Title) THIS IS MARIE, THERESA La Marseillaise) ¼ Min.

Handwritten: *Maestoso*
Musical notation for "La Marseillaise".
Copr. 1923, by Photo Play Music Co.

27 (Title) THIS IS SALLY Stars and Stripes (Sousa) ¼ Min.

Handwritten: *Marcia*
Musical notation for "Stars and Stripes" (Sousa).
Copr. by John Church Co.

NOTE: Play last strain of Trio.

WB-2
28 (Action) POLICEMAN SEES BARBED WIRE CINDERELLA THEME: The Swan (St. Saens) ¾ Min.

Adagio

Copp. 1906, by Carl Fischer.

29 (Title) SHE'S NOT EXACTLY SWISS—HER NAME IS Im Wald und der Haide (Kaine) ½ Min.

Valse

Copp. by Volkwein Bros.

30 (Title) I'M A PATRIOT, I AM Pack Up Your Troubles (Powell) ¾ Min.

Marcia

Copp. by Harms, Inc.

31 (Action) CHILDREN RISE FROM BOXES Children's Overture (Quilter) 1¼ Min.

And: to Mod: to

Copp. 1921, by Chappell & Co.

32 (Action) -INSERT-PICTURE OF CINDERELLA Fairy Tales (Komzak) ½ Min.

All: to

Copp. 1941, by Carl Fischer.

33 (Action) CINDERELLA APPEARS WITH CAP AND BROOM Midsummer Night's Dream (Mendelssohn) 1¼ Min.

All: to molto

Copp. 1902, by Carl Fischer.

34 (Title) THE KING, THE PRINCE AND FATHER..... God Save the King ½ Min.

Allegretto

Copp. by Carl Fischer.

35 (Action) -THEY SIT DOWN..... Little Flower Garden (Breil) 1¼ Min.

All: to

Copp. 1923, by Belwin, Inc.

36 (Title) I WISH YOU WERE NOT SO SURE OF..... LOVE THEME: Rose in the Bud (Forster) 1 Min.

Mod: to

Copp. 1910, by Chappell & Co.

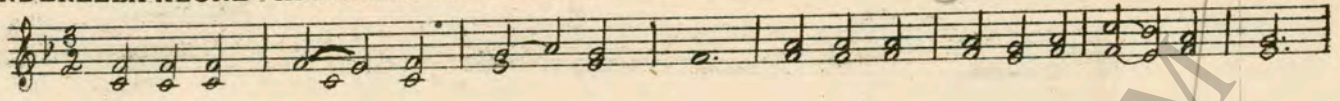
37 (Action) CINDERELLA AND POLICEMAN RISE FROM TABLE 2nd Arabesque (Debussy) ¾ Min.

All: to

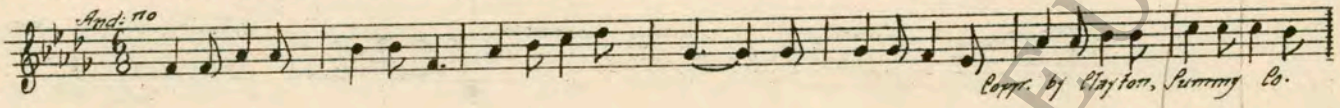
Copp. 1912, by Durand & Co.

copy — Wg B-2

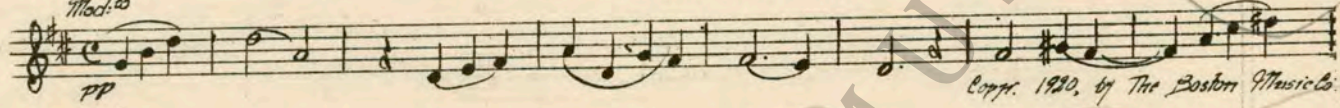
38 (Action) CINDERELLA ALONE—KNEELS IN PRAYER. Sun of Mv Soul (Ritter) ½ Min



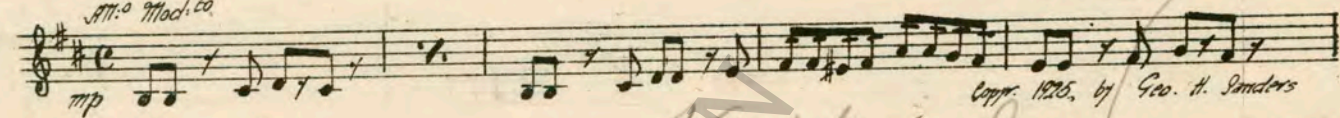
39 (Action) SHE RISES FROM KNEES The Slumber Boat (Gaynor) ½ Min



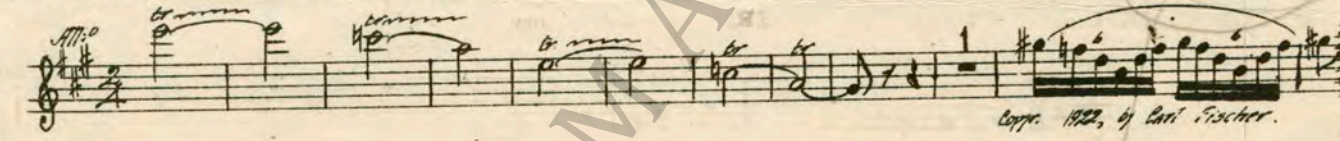
40 (Action) CINDERELLA STEALS SILENTLY FROM ROOM Prelude Religieux (Lang) 2¾ Min



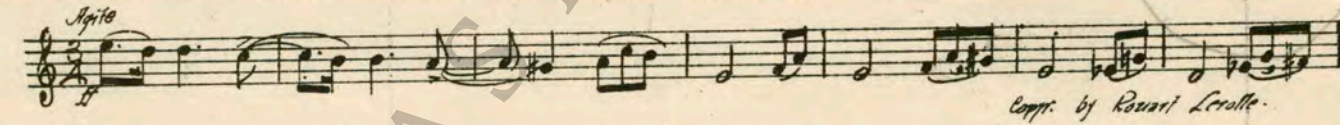
41 (Title) IN FIFTEEN MINUTES THE BALL WILL BE OVER Omens (Schad) 1 Min



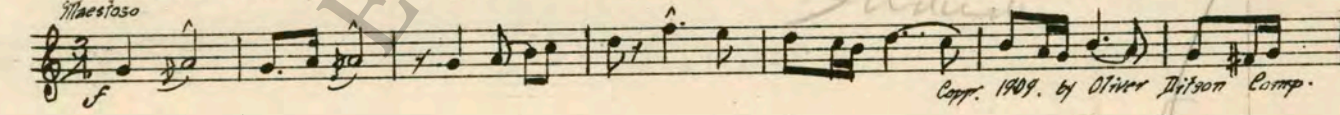
42 (Action) SNOW STARTS TO FALL—FAIRY APPEARS. Whispering Flowers (V. Blon) 2¾ Min



43 (Action) FAIRY TOUCHES HER WITH WAND Epilogue (Gabriel Marie) 1 Min



44 (Action) TRANSFORMATION COMPLETE—WHITE HORSES AND CARRIAGE SHOWS Pomposo (Borch) 1 Min



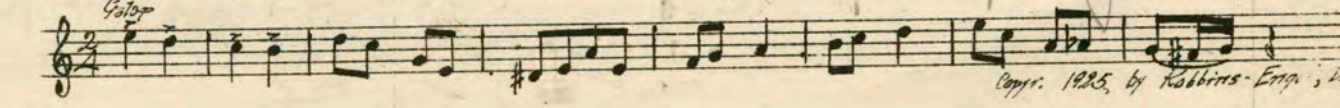
45 (Action) COACH STARTS OFF Scherzo (Mendelssohn) ¼ Min



46 (Title) NOW LET THIS BE Processional (Savino) ½ Min



47 (Action) FADE-IN BALL ROOM—CLOWN ACT Zip (Frey) 1 Min



CELESTIAL MUSIC Co. watermark

W. W. Waltz

48 (Action) CURTAINS OPEN—TITLE: MAKE WAY FOR Torch Dance (Thomas) 2 Min.

All.^o con sordini

Copr. 1915, by Hawks & Sori.

49 (Title) LET LOOSE THE BEAUTS The Eagle (Klein) 2½ Min.

Morziale

Copr. 1909, by W. Witmark & Son.

50 (Title) NOW WE COME TOO Malaguena (Moszkowski) 1 Min.

All.^o Pomposo
ff

Copr. by Carl Fischer.

51 (Title) NOTE: Catch bells ringing wildly ad lib. DROWN THEM Perpetual Motion (Borch) ½ Min.

Agitato
p

Copr. 1918, by Berg

52 (Action) TWO UGLY SISTERS APPEAR Tell Me Pretty Maiden (Stuart) 1 Min.

Mod.^{to}
p

Copr. 1920, by Archer.

53 (Title) NOTE: Triangle roll for horse. MAKE WAY—MAKE WAY Happyland (DeKoven) 1½ Min.

All.^o pomposo
f

Copr. 1905, by Ewd. B. Marks

54 (Title) NOTE: Play from beginning "99" SHE'S GOOD The Merrymakers (Coates) 2 Min.

Vivace
f

Copr. 1923, by Chappell & Co.

55 (Action) PRINCE KISSES HER FOOT Macbeth (Johnson) ½ Min.

And.^{te}
mf

Copr. 1913, by Hawks & Sori

56 (Title) NOT SO FAST Dancin' on the Green (Fletcher) 1¾ Min.

All.^o Ho

Copr. 1919, by Chappell & Co.

57 (Title) IT'S NOT A CATCH Pleading Love Theme (Bradford) ½ Min.

And.^{te}
p

Copr. 1924, by Belwin, Inc.

58. (Title) **TRUST IN THE LORD** The Festivities (Stanley) ¾ Min.

Musical notation for "Trust in the Lord" in 6/8 time, marked *Molto Vivace* and *mf*. Copyright 1903 by Hawkes & Sons.

59 (Title) **THE MARRIAGE CEREMONY** Bridal Chorus (Wagner) 1¼ Min.

Musical notation for "The Marriage Ceremony" in 3/4 time, marked *mod^{to} con moto* and *p*. Copyright 1910 by Carl Fischer.

60 (Title) **DO YOU, OH PRINCE** Repeat Love Theme No. 36 1 Min.

Musical notation for "Do You, Oh Prince" in 4/4 time, marked *Mod.^{to}*.

61 (Action) **DISCOVERS RING MISSING** Thrills (Sanders) ½ Min.

Musical notation for "Discovers Ring Missing" in 2/4 time, marked *Lively*. Copyright 1925 Sanders Co.

(Action) **PRINCE RECEIVES RING** Repeat Love Theme No. 36 ½ Min.

Musical notation for "Prince Receives Ring" in 4/4 time, marked *Mod.^{to}*.

63 (Title) **THE WEDDING MARCH** Wedding March (Mendelssohn) ¾ Min.

Musical notation for "The Wedding March" in 2/4 time, marked *All^o*. Copyright 1911 by Emil Ascher.

64 (Action) **PROCESSION DISAPPEARS THROUGH ARCHWAY** Cavalcade (Ring) 1 Min.

Musical notation for "Procession Disappears Through Archway" in 2/4 time, marked *All^o*. Copyright 1924 by Chappell & Co.

65 (Action) **HAND ORGANS START PLAYING—DANCE MUSIC** Pickins (Kaplan) 1¼ Min.

Musical notation for "Hand Organs Start Playing—Dance Music" in 2/4 time, marked *Tempo giusto*. Copyright 1917 by G. Schirmer.

66 (Action) **CINDERELLA STARTS TO WHIRL** Poeme Dramatique (Fourrain) 1¾ Min.

Musical notation for "Cinderella Starts to Whirl" in 3/4 time, marked *Assez Soutenu* and *f*. Copyright 1922 by Choudens.

NOTE: S. D. play dance tempo against music; catch whirls on S. D. Roll on cymbal for transformation; bells ringing throughout sequence ad lib.

67 (Action) **EXTERIOR—CINDERELLA IN SNOW** Valse Triste (Sibelius) ¾ Min.

Musical notation for "Exterior—Cinderella in Snow" in 3/4 time, marked *Valse Misterioso* and *p*. Copyright 1911 by Breitkopf.

NOTE: Play second strain only, very slow and "pp."

Vallo Wetzel

68 (Action) CINDERELLA OPENS EYES LOVE THEME: Rose in the Bud (Forster) ¾ Min.

Modto

Copyright, 1910 by Chappell & Co.

69 (Title) CINDERELLA HAD CINDERELLA THEME: The Swan (St. Saens) 1½ Min.

Adagio

Copyright, 1910 by Chappell & Co.

70 (Action) CHILDREN ENTER A Young Man's Fancy (Agar) 1 Min.

Modto

Copyright, 1920 by Leo Feist.

71 (Action) CHILDREN LEAVE ROOM Repeat Cinderella Theme No. 69 (Play "PP") 3½ Min.

Adagio

Copyright, 1910 by Chappell & Co.

72 (Action) POLICEMAN AT DOOR Repeat Love Theme No. 68 (Play "PP") 1¼ Min.

Modto

Copyright, 1910 by Chappell & Co.

73 (Action) CINDERELLA REMOVES HIS HELMET Just A' Wearyin' for You (Bond) (Play "PP") 1¼ Min.

Andte

Copyright, 1918 by Arnett-DeLoraine Co.

74 (Action) INSERT—MY DARLING I Love You Truly (Bond) 1 Min.

Andte con amore

Copyright, 1917 by Arnett-DeLoraine Co.

75 (Title) I WANT YOU TOO Poupee Valsante (Poldini) ¾ Min.

Walse.

Copyright, 1918 by Carl Fischer.

76 (Title) QUICK, WILL YOU HAVE ME LOVE THEME: Rose in the Bud (Forster) 1¼ Min.

Modto

Copyright, 1910 by Chappell & Co.

77 (Title) THEY'RE TERRIBLY SMALL CINDERELLA THEME: The Swan (St. Saens) 1 Min.

Adagio

Copyright, 1906 by Carl Fischer.

NOTE: Play "FF" for close.

THE END

Country of Origin, U. S. A.

Complete Orchestrations and single parts of all compositions contained herein can be purchased from CAMEO MUSIC SERVICE CORPORATION, 112-118 West 44th Street, New York City

95 1936: 1