

Thematic Music Cue Sheet

M. J. MINTZ (PATENT) JULY 31, 1923.

ADOLPH ZUKOR and JESSE L. LASKY

present

A FRANK TUTTLE PRODUCTION

"A KISS IN THE DARK"

with

Adolphe Menjou, Lillian Rich and Aileen Pringle

From the play "Aren't We All" by Frederick Lonsdale

Screen play by Townsend Martin

Music compiled by James C. Bradford

Footage 5767 feet



A Paramount Picture

- 1 AT SCREENING ..... LOVE THEME: A Kiss In the Dark (Herbert).....1 Min.

Musical notation for 'Love Theme: A Kiss In the Dark' with tempo marking 'Tempo di Valse' and copyright '1922, by Harms, Inc.'

- 2 (Title) TO MOST AMERICAN TOURISTS..... Chacone (Durand) .....3/4 Min.

Musical notation for 'Chacone (Durand)' with tempo marking 'Allegro' and copyright '1901, by Carl Fischer'

- 3 (Title) SOME VISITORS DEVELOP..... Galop No. 7 (Minot).....1/2 Min.

Musical notation for 'Galop No. 7 (Minot)' with tempo marking 'Allegro' and copyright '1916, by S. M. Berg'

- 4 (Title) SOME OTHERS DEVELOP..... La Rosita (Dupont).....2 1/4 Min.

Musical notation for 'La Rosita (Dupont)' with tempo marking 'Tango' and copyright '1922, by Sam Fox Pub. Co.'

NOTE: Play "P" and very legato.

- 5 (Action) INSERT-NOTE: "PLEASE BE AT HOME," ETC. .... La Piquante (Rapee-Axt).....1 3/4 Min.

Musical notation for 'La Piquante (Rapee-Axt)' with tempo marking 'Moderato' and copyright '1923, by Robbins-Ernegel, Inc.'

- 6 (Action) JANET AND WALTER ON ROOF..... Heart of Harlequin (Drigo).....2 1/4 Min.

Musical notation for 'Heart of Harlequin (Drigo)' with tempo marking 'Andante' and copyright '1923, by Carl Fischer'

- 7 (Title) AT HER HOTEL..... Air de Ballet (Hadley).....2 1/2 Min.

Musical notation for 'Air de Ballet (Hadley)' with tempo marking 'Allegro grazioso' and copyright '1920, by Carl Fischer'

8 (Action) FELIPE AND IULIO ENTER ROOM.....Manzanillo (Robyn) .....1¼ Min.

Musical notation for track 8, featuring a treble clef, a key signature of one sharp (F#), and a 2/4 time signature. The tempo is marked *Mto. Mod:to* and the dynamics are *p*. The music consists of a single melodic line with various rhythmic patterns. Copyright notice: *Copyr. 1908, by Carl Fischer*.

9 (Action) FLASH-BACK TO JANET AND WALTER ON ROOF .....Midsummer (Maquarre) .....3¾ Min.

Musical notation for track 9, featuring a treble clef, a key signature of one sharp (F#), and a 2/4 time signature. The tempo is marked *Mto* and the dynamics are *p*. The music consists of a single melodic line. Copyright notice: *Copyr. 1921, by Samuel Mayes*.

10 (Action) JOHNNY APPEARS .....Little Flower Garden (Breil).....1½ Min.

Musical notation for track 10, featuring a treble clef, a key signature of one sharp (F#), and a 2/4 time signature. The tempo is marked *Comodo* and the dynamics are *p*. The music consists of a single melodic line. Copyright notice: *Copyr. 1923, by Belwin, Inc.*

11 (Action) BETTY LEAVES .....WALTER THEME: Forget Me Not (Macbeth).....1¼ Min.

Musical notation for track 11, featuring a treble clef, a key signature of one sharp (F#), and a 2/4 time signature. The tempo is marked *Mto* and the dynamics are *p*. The music consists of a single melodic line. Copyright notice: *Copyr. 1913, by Carl Fischer*.

12 (Title) WHILE BETTY .....NOTE: When door closes catch crash for falling mirror. Jealous (Little) .....2½ Min.

Musical notation for track 12, featuring a treble clef, a key signature of one sharp (F#), and a 2/4 time signature. The tempo is *Mto* and the dynamics are *mf*. The music consists of a single melodic line. Copyright notice: *Copyr. 1921, by Henry Waterson*.

13 (Action) BETTY SPEAKS TO STEWARD.....Moto Perpetuo (Weiss).....2¼ Min.

Musical notation for track 13, featuring a treble clef, a key signature of one sharp (F#), and a 2/4 time signature. The tempo is marked *Mto Eccitato* and the dynamics are *mf*. The music consists of a single melodic line. Copyright notice: *Copyr. 1924, by Geo. H. Sanders*.

14 (Title) WELL, WE'LL HAVE THAT DINNER TOGETHER .....Columbine (Smith) .....1 Min.

Musical notation for track 14, featuring a treble clef, a key signature of one sharp (F#), and a 2/4 time signature. The tempo is marked *Vivo* and the dynamics are *f*. The music consists of a single melodic line. Copyright notice: *Copyr. 1920, by Carl Fischer*.

15 (Title) BY 2 A. M. ....Light Agitato No. 4 (Luz).....½ Min.

Musical notation for track 15, featuring a treble clef, a key signature of one sharp (F#), and a 2/4 time signature. The tempo is marked *Mto Mod:to* and the dynamics are *f*. The music consists of a single melodic line. Copyright notice: *Copyr. 1915, by Photo Play Music Co.*

16 (Title) SO FAR GRESHAM.....The Creole Tango (Battisti).....1¼ Min.

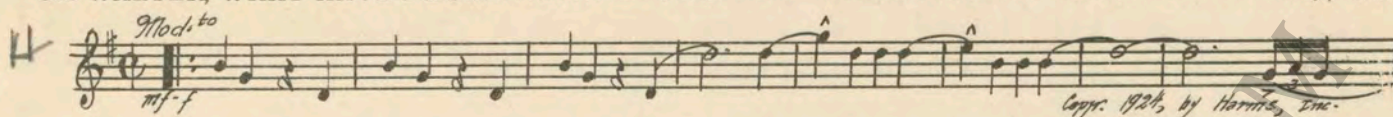
Musical notation for track 16, featuring a treble clef, a key signature of one sharp (F#), and a 2/4 time signature. The tempo is marked *Tango* and the dynamics are *mf*. The music consists of a single melodic line. Copyright notice: *Copyr. 1913, by G. Schirmer*.

17 (Action) DANCING STOPS—BETTY AND WALTER WALK TO OTHER ROOM.....Repeat Love Theme No. 1.....2 Min.

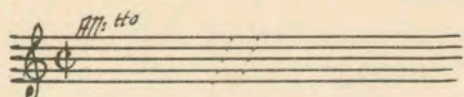
Musical notation for track 17, featuring a treble clef, a key signature of one sharp (F#), and a 2/4 time signature. The tempo is marked *Tempo di Paise*. The notation shows a few notes on a staff, followed by a double bar line and a few more notes.

NOTE: When they sit on divan, Violin Solo con sordini, sentimental.

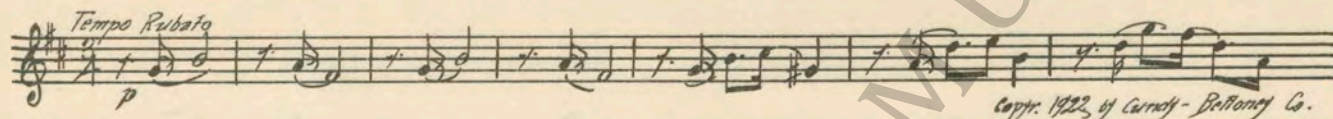
18 (Title) OH WALTER, WHAT HAVE I DONE.....Oh Joseph from "Madame Pompadour" (Fall).....1¼ Min.



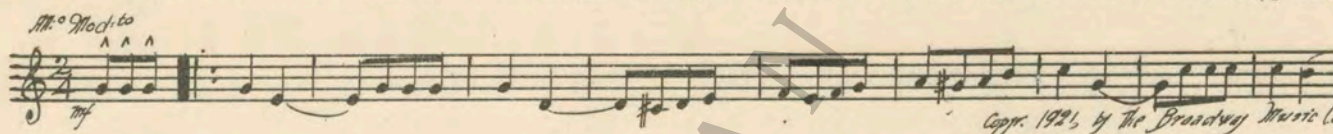
19 (Action) WALTER ALONE IN ROOM.....Repeat Walter Theme No. 11.....1 Min.



20 (Title) BETTY'S MESSAGE HAD.....Chopin from "Magic Lantern" (Godard).....1½ Min.



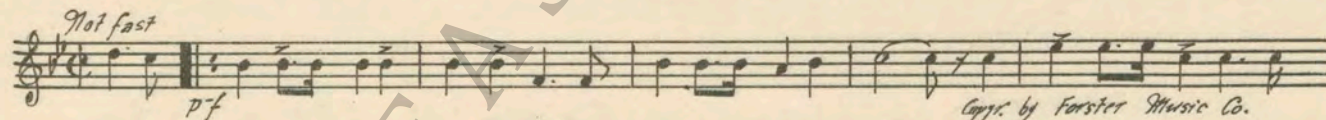
21 (Action) JOHNNY OPENS DOOR—JAZZ PARTY ACROSS HALL .....Anna (Rose) .....1½ Min.



22 (Title) WHEN JANET RETURNED HOME.....Valse "Divine" (Rosey).....3 Min.



23 (Action) FLASH-BACK TO JAZZ PARTY.....It Ain't Gonna Rain No Mo' (Hall).....1¾ Min.

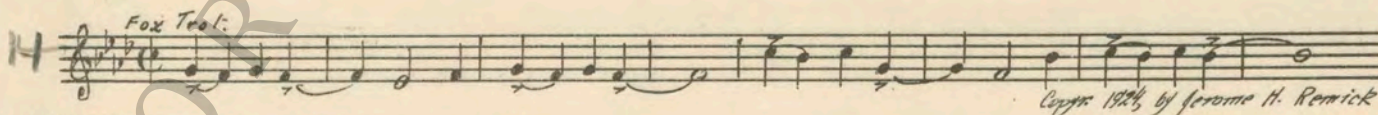


NOTE: Play "PP" for scene in Johnny's room and "F" for dance scene.

24 (Action) GIRL DANCING RUSHES BACK OF CURTAIN Novelty Hurry (O'Hare).....¾ Min.



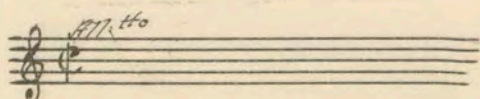
25 (Title) PARK YOURSELF ON THE SOFA.....Me and the Boy Friend (Monaco).....1¼ Min.



25 (Action) JOHNNY SEES BETTY STANDING IN DOORWAY .....Incid. Symphony No. 9 (Kempinski).....1¾ Min.



27 (Action) WALTER ENTERS ROOM.....Repeat Walter Theme No. 11.....1 Min.



28 (Title) IF SHE DOES, THERE'S GOING TO BE.....Hearts and Flowers (Tobani).....1 Min.

Mod<sup>to</sup> burlesque  
  
Copr. by Carl Fischer

NOTE: Play a la burlesque.

29 (Action) FLASH-BACK TO JAZZ PARTY.....Hard Hearted Hannah (Yellen).....1½ Min.

Mod<sup>to</sup>  
  
Copr. 1924, by Ayer, Yellen & Bornstein

NOTE: Play "PP" throughout entire sequence.

30 (Title) ON THE WAY TO HIS APARTMENT.....Aubade Printaniere (Lacombe).....3 Min.

M<sup>to</sup>  
  
Copr. 1907, by Carl Fischer

31 (Action) WALTER OPENS DOOR FOR BETTY.....Repeat Walter Theme No. 11.....1 Min.

M<sup>to</sup>

32 (Action) BETTY AND WALTER SIT ON DIVAN.....Repeat Love Theme No. 1.....2¼ Min.

Tempo di Valsa

33 (Title) I CAN'T GO THROUGH WITH IT.....Butterfly Dance (Frey).....1½ Min.

M<sup>to</sup> scherzando  
mf  
  
Copr. 1924, by Robbins-Engel, Inc

34 (Action) JOHNNY SEES GLOVES ON TABLE.....Misterioso Dramatico No. 22 (Borch).....3½ Min.

M<sup>to</sup> Andante  
  
Copr. by S. M. Berg

35 (Action) JANET APPEARS FROM BACK OF CURTAIN.....Before the Footlights (Manney).....1¾ Min.

M<sup>to</sup> Andante  
  
Copr. 1921, by Carl Fischer

36 (Title) BETTY GETS A FAST CAB.....Repeat Love Theme No. 1.....1¼ Min.  
Country of Origin, U. S. A.

THE END

Complete Orchestrations and single parts of all compositions contained herein can be purchased from CAMEO MUSIC SERVICE CORPORATION, 112-118 West 44th Street, New York City