

213
APRIL 25, 1925 AT THE TIME THIS CUE SHEET WAS PREPARED, THE NUMBERS PRECEDED BY
ASTERISK (*) WERE TAX FREE.



WARNER BROS.
Classics of the Screen

“KISS ME AGAIN”

WITH

Marie Prevost — Monte Blue

Clara Bow — John Roche — Willard Louis

Directed by

Ernst Lubitsch

MUSIC COMPILED BY

JAMES C. BRADFORD

Complete Orchestrations and single parts of all compositions contained herein can be purchased from CAMEO
MUSIC SERVICE CORPORATION, 112-118 West 44th Street, New York City

MADE IN U. S. A.

M. J. MINTZ (PATENT)
JULY 31, 1923.

"KISS ME AGAIN"

Music compiled by James C. Bradford

- 1 AT SCREENING Mlle. Modiste (Herbert) 1/4 Min.

All^o

 Copyr. 1916 by M. Witmark & Sons

- 2 (Title) TO EVERY HUSBAND Rustle of Spring (Sinding) 1 1/2 Min.

Agitato

 Copyr. 1918 by Carl Fischer.

NOTE: Play as Piano Solo.

- 3 (Title) IT'S NO USE Vivienne (Finck) 3/4 Min.

All^o

 Copyr. 1917 by Hammes & Sons.

- 4 (Action) PIANO PLAYER STARTS THEME: Kiss Me Again (Herbert) 2 Min.

- 5 (Action) MAURICE FINISHES PLAYING Madame Toujours Pret (Hampson) 3/4 Min.

All^o

 Copyr. 1920 by Hammes & Sons.

- 6 (Action) GASTON STARTS PIANO Repeat Theme No. 4 1/2 Min.

Valse lente (Very Slow)

NOTE: Play as Piano Solo—automatic piano.

- *7 (Action) HE STOPS PIANO La Lisonjera (Chaminade) 3/4 Min.

Mod^{to}

 Copyr. by Emil Ascher.

- 8 (Title) WHEN A MAN'S EYESIGHT IS POOR Une Promenade de Matin (Bendel) 1 1/4 Min.

Energico

 Copyr. 1910, by Carl Fischer.

- *9 (Title) SO GASTON FOLLOWED HIS LAWYER'S
ADVICE Butterflies (Huerter) 2 1/2 Min.

Valse All^o

 Copyr. 1923 by Oliver Wilson Co.

- 10 (Title) ISN'T THAT SWEET OF MAURICE Woodland Whispers (Czibulka) 1 Min.

All^o

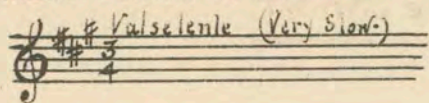
 Copyr. Carl Fischer

- 11 (Title) IT'S A GOOD THING FOR HIM WE
DIDN'T MEET Valse Celebre (Moszkowski) 1 1/2 Min.

Valse

 Copyr. G. Schirmer

12 (Action) INSERT—PHOTO OF HUSBAND Repeat Theme No. 4 1 Min.



13 (Action) GASTON ENTERS Le Roi l'a dit (Delibes) 1½ Min.



14 (Title) YOU'RE IN LOVE WITH MY WIFE Rage (Axt) 2¼ Min.



NOTE: Catch report of bursting auto tire. Play "PP" for flashes of Loulou.

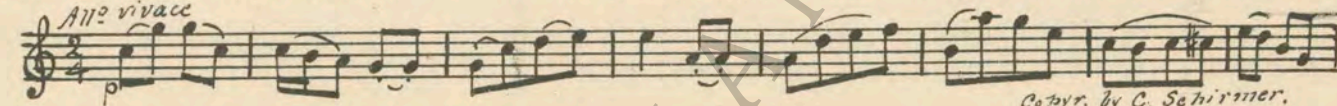
15 (Title) AT THE FLEURY HOME Babillage (Gillet) 3½ Min.



16 (Action) STENOGRAPHER ENTERS Miss Dolly Dollars (Herbert) 1¼ Min.



17 (Title) THERE IS ONLY ONE MORE Le Retour (Bizet) 3 Min.

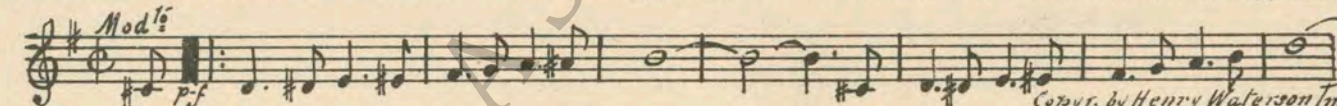


18 (Action) STENOGRAPHER AT CASE Repeat No. 16 "Miss Dolly Dollars" 1¼ Min.

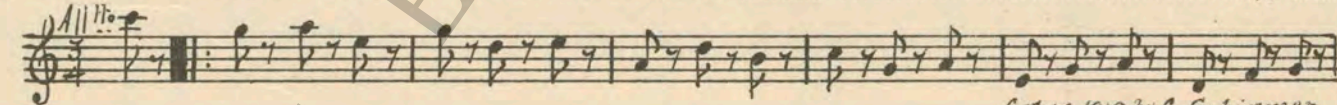
*19 (Title) THE SAME DAY Entr'acte (Michiels) ¾ Min.



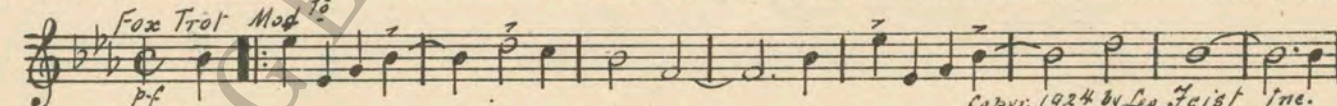
*20 (Action) LOULOU AND MAURICE AT TABLE Jealous (Little) 1¾ Min.



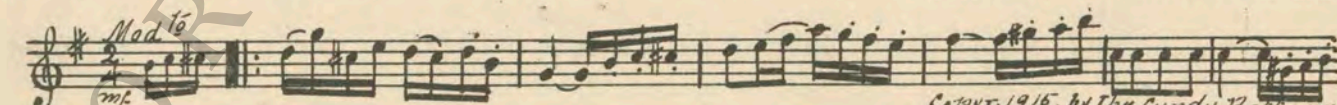
21 (Title) I BELIEVE HE'S GLAD TO BE RID OF ME ..Waltz-Scherzo (Straus) 1½ Min.



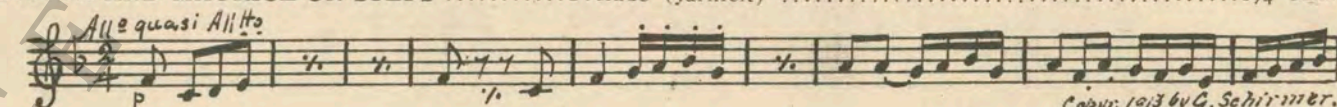
22 (Title) BUT EVENING CLOTHES The Little Old Clock on the Mantel (Fiorito) 1 Min.



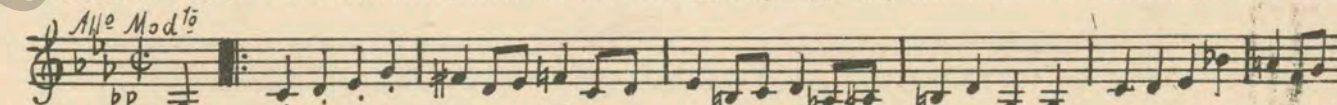
*23 (Action) GASTON ENTERS ROOM Roses and Butterflies (Celfo) 3 Min.



24 (Action) GASTON AND MAURICE ON STEPS Prelude (Jarnfelt) 1¾ Min.



25 (Action) IT STARTS TO RAIN Misterioso Burlesque (Savino) 1½ Min.



26 (Title) NEXT MORNING Prelude (Rachmaninoff) ¾ Min.

Agitato
sempre sfz acc.

 Copyr. 1911 by Carl Fischer

*27 (Action) MAURICE STOPS PLAYING April Breezes (Florida) 1½ Min.

Copyr. 1916 by The Candy Belloney Co

23 (Action) STENOGRAPHER ENTERS ROOM Repeat No 16 "Miss Dolly Dollars" 1 Min.

Allo Mod. to

*29 (Title) MAURICE COULD NOT MAKE LOVE Frills and Frivolities (Bath) 1¾ Min.

All. to moderamento.

 Copyr. 1922 by Bosworth & Co.

30 (Title) CHATEAU ROUGE Folies-Bergere (Lincke) 3 Min.

Soltes del.

All. giusto

 Copyr. 1921 by Edw. B. Marks

31 (Action) GASTON AND STENOGRAPHER SIT AT TABLE Absinthe Frappe "It Happened in Nordland" (Herbert) 2¾ Min.

Valse rubato

 Copyr. 1905 by Witmark & Sons.

32 (Action) STREET SCENE Repeat No. 16 "Miss Dolly Dollars" 1 Min.

33 (Action) FLASH-BACK TO CAFE Tout en Rose (Scotto) 1 Min.

Tempo di Marcia.

 Copyr. 1921 by Edw. B. Marks.

34 (Title) AND WHEN GASTON RETURNED TO HIS HOTEL Passepied (Delibes) 1½ Min.

All.º

 Copyr. 1912 by G. Schirmer.

35 (Title) I'M SORRY FOR WHAT I DID When You're Away (Herbert) ¾ Min.

Molto Mod. to

 Copyr. 1914 by Witmark & Sons.

*36 (Action) GASTON LEAVES ROOM Pomponette (Durand) 2½ Min.

All.º

 Copyr. 1923 by The Candy Belloney

37 (Title) SINCE YOU ARE SO My Best Girl (Donaldson) 1 Min.

Fox Trot

 Copyr. 1924 by Jerome H. Remick & Co.

38 (Action) GASTON ASLEEP IN CHAIR Waltz Me Lightly, Hold Me Tightly (Holden) 1 Min.

Waltz

 Copyr. 1925 by M. Witmark & Sons

39 (Action) MAURICE AT PIANO Repeat Theme No. 4 1 Min.

NOTE: Start as Piano Solo; orchestra pick up for close of picture.

 Country of origin, U. S. A.

THE END

Complete Orchestrations and single parts of all compositions contained herein can be purchased from CAMEO MUSIC SERVICE CORPORATION, 112-118 West 44th Street, New York City