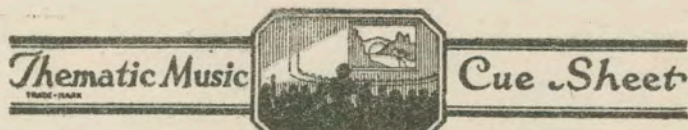


400



M. J. MINTZ (PATENT)
JULY 31, 1923.

Joseph P. Kennedy

presents

"KOSHER KITTY KELLY"

with

Viola Dana, Vera Gordon and Nat Carr

Directed by James Horne

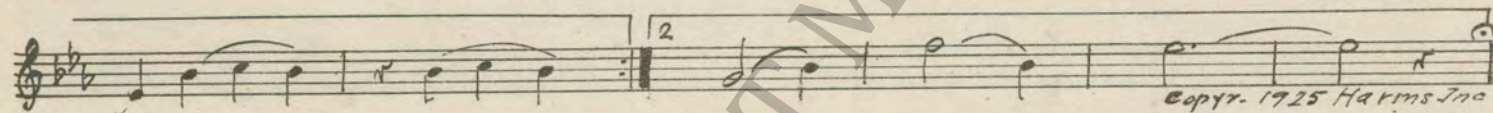
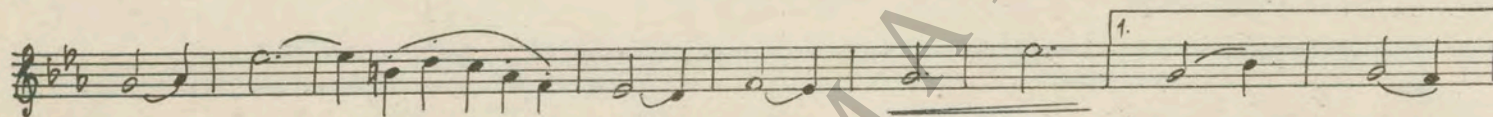
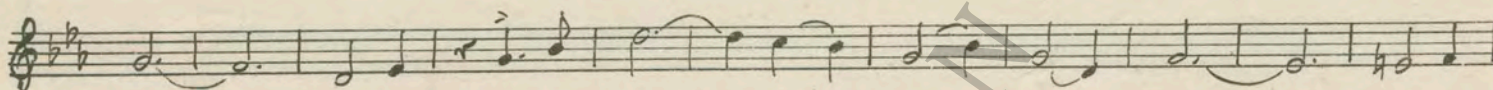
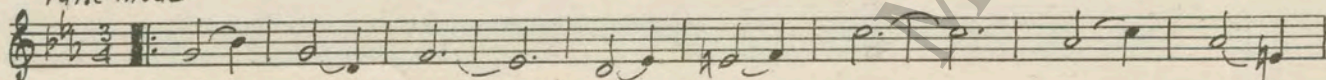
Music compiled by James C. Bradford

Distributed by

FILM BOOKING OFFICES OF AMERICA, INC.

1 AT SCREENINGTHEME: Kosher Kitty Kelly (DeCosta)½ Min.

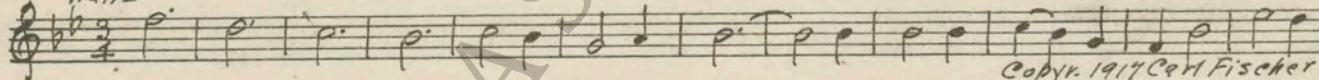
Valse mod^{to}



Copyr. 1925 Harms Inc

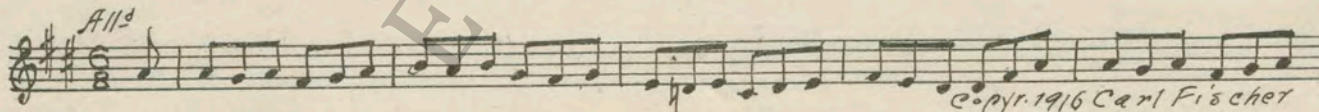
2 (Title) NEW YORK'S EAST SIDESidewalks of New York from "Old Timers" (Lake).....1 Min.

Waltz



Copyr. 1917 Carl Fischer

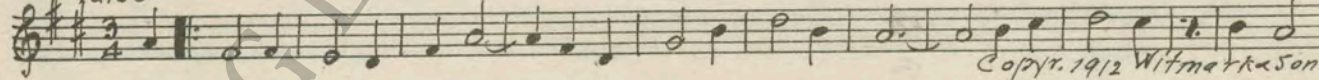
SEGUEGigue (Gretry-Mottl)



Copyr. 1916 Carl Fischer

3 (Title) IN THE KELLY FLATWhen Irish Eyes Are Smiling (Ball)2 Min.

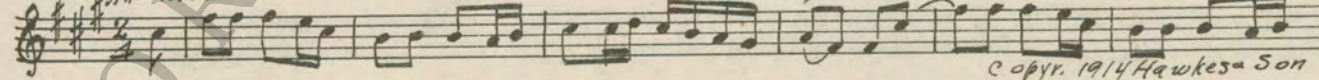
Valse



Copyr. 1912 Witmark & Sons

4 (Action) MOTHER APPEARS IN DOORWAY.....Three Irish Pictures No. 1 (Ansell)1 Min.

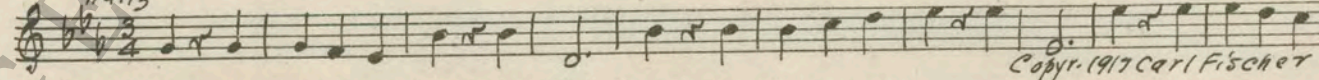
All^o mod^{to}



Copyr. 1914 Hawkes & Son

5 (Title) TELL BARNEY TO GET A MOVE ON.....Old Timers (Lake)2 Min.

Waltz

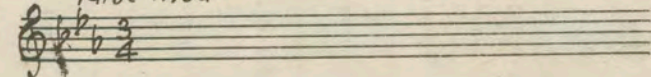


Copyr. 1917 Carl Fischer

NOTE: Start with "The Bowery" and play "PP" throughout entire sequence.

6 (Action) BARNEY LEAVESRepeat Theme No. 1½ Min.

Valse mod^{to}



7 (Title) THREE FLIGHTS DOWNThat's My Girl (Davis)2 Min.

Musical notation for item 7, starting with *Mod^{to}* and ending with *Copyr. 1926 Witmark & Sons*

8 (Action) BARNEY ENTERS STOREAnimal Cartoonix No. 2 (Aborn)1¼ Min.

Musical notation for item 8, starting with *All^o* and ending with *Copyr. 1925 Belwin Inc*

9 (Title) WHERE BARNEY SPENDS HISPrincess Pat Fox Trot (Herbert)1 Min.

Musical notation for item 9, starting with *Fox Trot* and *Loco*, ending with *Copyr. 1915 Carl Fischer*

10 (Action) GINSBERG WALKING DOWN STREETThrills (Sanders)1 Min.

Musical notation for item 10, starting with *Lively*, ending with *Copyr. 1925 Sanders Co*

11 (Action) GANG CATCH GINSBERGThreatening Elements (Schad)2¾ Min.

Musical notation for item 11, starting with *Agitato*, ending with *Copyr. 1926 Sanders Co*

12 (Action) PAT PLACES HAND ON BLOODY DOOR KNOBAppassionato No. 2 (Axt)3¾ Min.

Musical notation for item 12, starting with *All^o appass.*, ending with *Copyr. 1924 Robbins Engel*

13 (Title) IN SPIITE OF THE DULL ACHELarghetto 2nd Symphonie (Beethoven)1 Min.

Musical notation for item 13, starting with *Larghetto*

14 (Title) WHILE BARNEY WASLittle Serenade (Grunfeld)1½ Min.

Musical notation for item 14, starting with *Andino*, ending with *Copyr. 1909 Carl Fischer*

15 (Title) SOON THE NEIGHBORSFrailach No. 3 (Ascher)2 Min.

Musical notation for item 15, starting with *All^o*, ending with *Copyr. 1915 Emil Ascher*

16 (Action) FANNIE PRODUCES MONEY—SLIPS IT TO GINSBERGMv Yiddishe Momme (Pollack)¾ Min.

Musical notation for item 16, starting with *And^{te} mod^{to}*, ending with *Copyr. 1925 Geyer Yellen & Bornstein*

17 (Action) GINSBERG AT CASH REGISTERRepeat No. 15 "Frailach No. 3"1 Min.

Musical notation for item 17, starting with *All^o*

18 (Title) MEANWHILE KOSHER KITTY KELLY.....Repeat Theme No. 11 Min.

Musical notation for item 18, starting with *Valse mod^{to}*

19 (Action) FAMILIES MEET IN HALLWAYGigue (Gretrv-Mottl)1½ Min

Musical notation for item 19, starting with *All^o* and ending with *Copyr. 1916 Carl Fischer*

20 (Action) INSERT—SON OF IRELANDMe and the Boy Friend (Monaco)2½ Min.

Musical notation for item 20, starting with *All^o* and ending with *Copyr. 1924 Remick & Co*

21 (Action) GINSBERG APPEARS ON STAIRSMazel Toof (Ascher)1½ Min.

Musical notation for item 21, ending with *Copyr. 1914 Emil Ascher*

22 (Title) IT'S ALL SETTLEDEmotional Agitato (Savino)2¼ Min.

Musical notation for item 22, starting with *All^o* and ending with *Copyr. 1925 Robbins Engel*

23 (Title) IT'S HER HEARTRepeat No. 16 "My Yiddishe Momme"1 Min.

Musical notation for item 23, starting with *And^{te} mod^{te}*

24 (Title) HER ENGINE BACKFIREDGossip (Borch)½ Min.

Musical notation for item 24, starting with *All^o* and ending with *Copyr. 1925 Belwin Inc.*

25 (Title) PAT SPRINGS A BIG SURPRISEBig Boy (Ager)½ Min.

Musical notation for item 25, starting with *Mod^{te}* and ending with *Copyr. 1924 Ager Yellen & Bornstein*

26 (Action) FLASH TO STOREBreiges Tanz (Ascher)1 Min.

Musical notation for item 26, starting with *Mod^{te}* and ending with *Copyr. 1915 Em. Ascher*

27 (Action) KITTY ON STREETRepeat Theme No. 11½ Min.

Musical notation for item 27, starting with *Valse mod^{te}*

28 (Title) CUPID MISSED BIRERepeat No. 16 "My Yiddishe Momme"1 Min.

Musical notation for item 28, starting with *And^{te} mod^{te}*

29 (Action) YOUNG FOLK ENTERI Love My Baby (Warren)¾ Min.

Musical notation for item 29, starting with *Mod^{te}* and ending with *Copyr. 1925 Shapiro Bernstein*

30 (Action) ROSIE RISES FROM PIANOElves In the Moonlight (Lindgreen)1¼ Min.

Musical notation for item 30, starting with *All^o grazioso* and ending with *Copyr. 1926 Belwin Inc*

NOTE: Piano Solo ad lib—orchestra pick up.

31 (Title) AS THE DAYAndantino (d'Ambrosio)2¼ Min.

Handwritten musical notation for "AS THE DAY" in treble clef, 3/4 time, marked *And^{te}mo*. Copyright 1925 M. Arnos Music Co.

32 (Action) FLASH TO KELLY FLATA Keltic Lament (Foulds)1½ Min.

Handwritten musical notation for "FLASH TO KELLY FLAT" in treble clef, 4/4 time, marked *Lento*. Copyright 1916 Hawkes & Son.

33 (Action) BARNEY ARRIVES HOMEJoy (Zamecnik)1¼ Min.

Handwritten musical notation for "BARNEY ARRIVES HOME" in treble clef, 3/4 time, marked *All^o*. Copyright 1921 Sam Fox P. Co.

34 (Action) PAT LOOKING AT POSTER BOARDRepeat No. 32 "A Keltic Lament"½ Min.

Handwritten musical notation for "PAT LOOKING AT POSTER BOARD" in treble clef, 4/4 time, marked *Lento*.

35 (Title) SUMMER CAMERepeat No. 16 "My Yiddishe Momme"1¾ Min.

Handwritten musical notation for "SUMMER CAME" in treble clef, 3/4 time, marked *And^{te}mod^{to}*.

36 (Title) THE GANG HAD SETTLEDWeird Misterioso (Kilenyi)2 Min.

Handwritten musical notation for "THE GANG HAD SETTLED" in treble clef, 3/4 time, marked *Mod^{to}*. Copyright 1924 Belwin Inc.

37 (Title) SULLIVAN, THIS IS THE FIRST TIME.....Tragic Andante (Savino)1½ Min.

Handwritten musical notation for "SULLIVAN, THIS IS THE FIRST TIME" in treble clef, 3/4 time, marked *And^{te}*. Copyright 1923 G. Schirmer.

38 (Title) YOU THREW MY SISTER DOWNMysterious Furioso (Langey)3½ Min.

Handwritten musical notation for "YOU THREW MY SISTER DOWN" in treble clef, 3/8 time, marked *All^o mist.*. Copyright 1919 Oliver Ditson Co.

39 (Title) HALP! HALP! HALP!Elopement (Carrozzini)¾ Min.

Handwritten musical notation for "HALP! HALP! HALP!" in treble clef, 2/4 time, marked *Vivace*. Copyright 1926 Sonneman M. Co.

40 (Action) FLASH TO KELLY FLATRepeat Theme No. 1½ Min.

Handwritten musical notation for "FLASH TO KELLY FLAT" in treble clef, 3/4 time, marked *Valse mod^{to}*.

41 (Action) FLASH-BACK TO GINSBERG AND FANNIE.. Repeat No. 16 "My Yiddishe Momme"½ Min.

Handwritten musical notation for "FLASH-BACK TO GINSBERG AND FANNIE" in treble clef, 3/4 time, marked *And^{te}mod^{to}*.

NOTE: You may disregard the last cue if you wish and continue the theme until the end of picture.
THE END

Printed in U. S. A.

Complete orchestrations and single piano parts of each separate number contained hereon, can be purchased from CAMEO MUSIC SERVICE CORPORATION, 315-317 West 47th Street, New York City.

95:1978:1