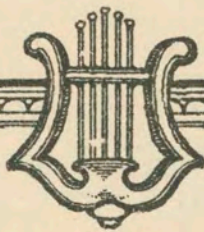


187



M. J. MINTZ (PATENT)  
JULY 31, 1923.

Joseph M. Schenck

PRESENTS

NORMA TALMADGE

IN

“THE SLADY”

A FIRST NATIONAL PICTURE

MUSIC COMPILED BY

EDWARD KILENYI

MUSICAL DIRECTOR, COLONY THEATRE, N. Y. CITY

Complete Orchestrations and single parts of all compositions contained herein can be purchased from CAMEO  
MUSIC SERVICE CORPORATION, 112-118 West 44th Street, New York City

MADE IN U. S. A.

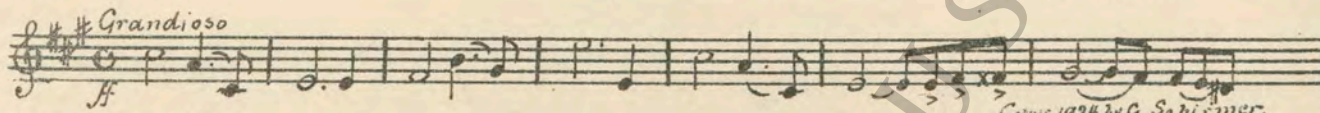


M. J. MINTZ (PATENT)  
JULY 31, 1923.


# “THE LADY”

Music compiled by Edward Kilenyi

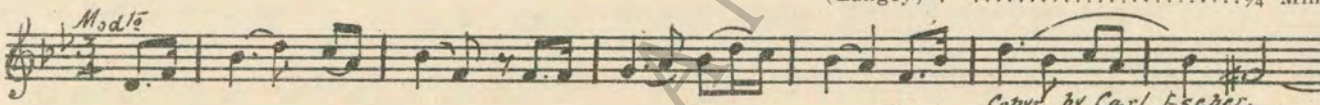
- 1 AT SCREENING ..... Adagio Elegiaque (Weiniawski) ..... 1¼ Min.

*Grandioso*  
  
 NOTE: Start at No. 3. *Copyr. 1924 by G. Schirmer.*

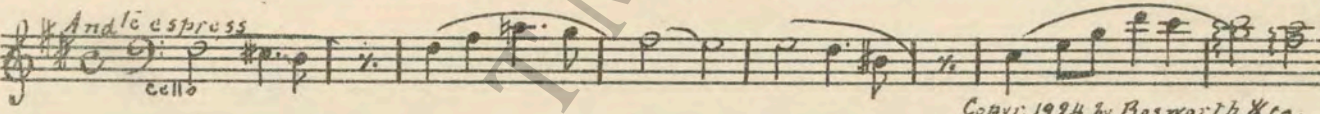
- 2 (Title) THE LADY ..... L'Amour (Christine) ..... 3 Min.

*Two Step.*  
  
*Copyr. 1913, by Ed. B. Marks.*


- 3 (Title) EVER SINCE YOU SAID ..... On the Banks of Allan Water "Sounds from England" (Langey) ..... ¾ Min.

*Moderate*  
  
*Copyr. by Carl Fischer.*

- 4 (Title) ENGLAND IN APRIL ..... True Love (Ketelbey) ..... 1¾ Min.

*And. e. spress.*  
  
*Copyr. 1924 by Bosworth & Co.*

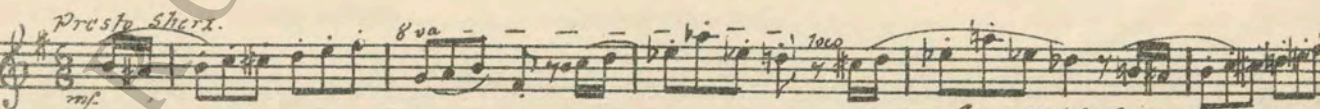
- 5 (Title) YOU WOULDN'T BELIEVE ..... Orpheus inder Unterwelt (Offenbach) ..... ¾ Min.

*All.º*  
  
*Copyr. 1914 by Carl Fischer.*

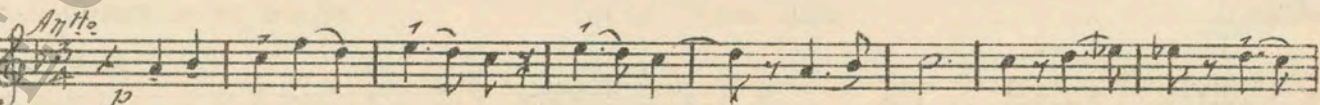
- 6 (Title) NEXT IS POLLY PEARL ..... The Message of the Violet "Prince of Pilsen" (Luders) ..... 1¾ Min.

*And.ººº*  
  
*Copyr. 1917 by M. Witmark & Sons*

- 7 (Action) AFTER CURTAIN GOES DOWN ..... Scherzo (Ketelbey) ..... 3¾ Min.

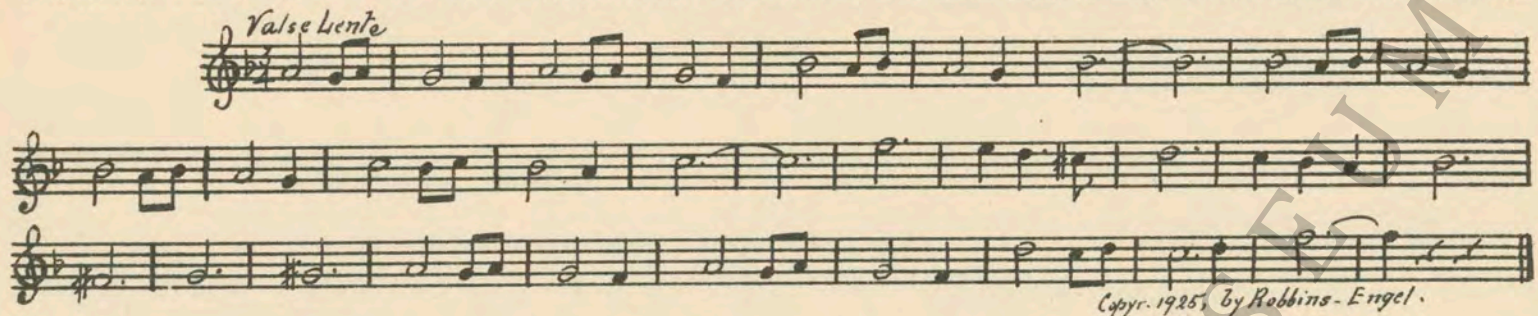
*Presto Scherz.*  
  
*Copyr. 1924 by Bosworth & Co.*

- 8 (Action) MAN COMES IN TO POLLY ..... Canzone (Gabriel Marie) ..... 2¾ Min.

*And.º*  


9 (Action) POLLY AND MAN KISSING .....THEME: Dear Little Lady (Shloss) .....1 Min.

*Valse lente*



Copyr. 1925, by Robbins-Engel.

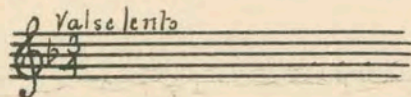
10 (Action) POLLY OPENS DOOR—OLD MAN ENTERS..From Fair Provençe's Soil and Sea "La Traviata" (Verdi) .....2 Min.

*And<sup>te</sup> largo*



11 (Action) FATHER LEAVES .....Repeat Theme No. 9 .....1 Min.

*Valse lento*



NOTE: Start "PP", then play to action.

12 (Action) MAN FALLS IN THROUGH DOOR .....Comedy (Ketelbey) .....1 Min.

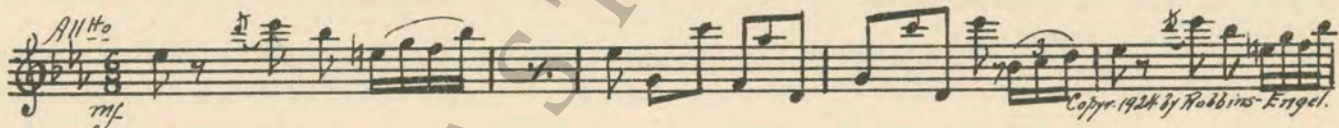
*All<sup>o</sup> vivace*



Copyr. 1924, by Bosworth & Co.

13 (Action) BOY SEEN SMOKING .....Screening Preludes No. 2 (Rapee-Axt) .....¾ Min.


*All<sup>o</sup> mf*



Copyr. 1924, by Robbins-Engel.

14 (Title) AND THEN MONTE CARLO .....Valse (Levitcki) .....1½ Min.

*Valse*



Copyr. 1923 by G. Schirmer.

15 (Title) BETTER WATCH YOUR HUSBAND.....Pourquoi Pas? (Gandria) .....1¾ Min.

*Valse lento*

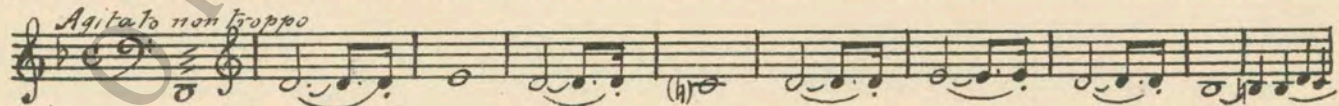


Copyr. 1921, by Ricordi

NOTE: Play it slowly as a sensuous melody.

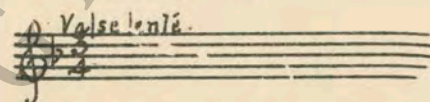
16 (Action) POLLY IS INTRODUCED TO WOMAN .....Danger Conjure (Gabriel Marie) .....1½ Min.

*Agitato non troppo*



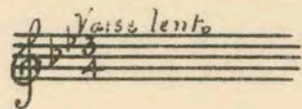
17 (Title) POLLY, I AIN'T MUCH .....Repeat Theme No. 9 .....1½ Min.

*Valse lenté.*

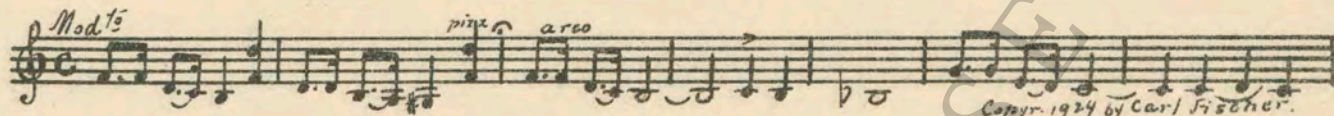


NOTE: Play "PP" melody in Cello with tremolo accompaniment.

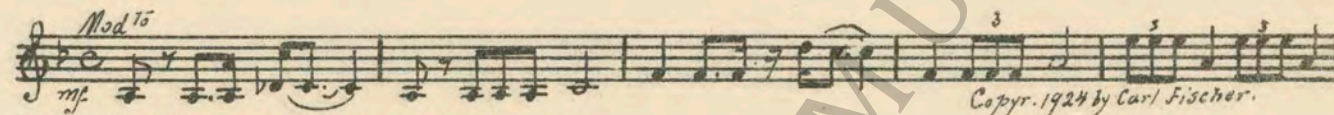
18 (Action) WOMAN FILLS LIQUOR GLASSES ..... Repeat No. 15 "Pourquoi Pas?" ..... ½ Min.



19 (Action) POLLY COMES IN ..... Film Theme No. 36 (Kilenyi) ..... 3¼ Min.

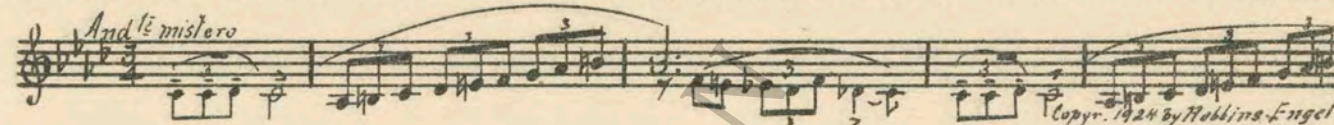


SEGUE: Film Theme No. 38 (Kilenyi)



NOTE: Play first part only; play to action.

20 (Title) MONTHS LATER IN MARSEILLES ..... Weird Night (Axt) ..... ¾ Min.

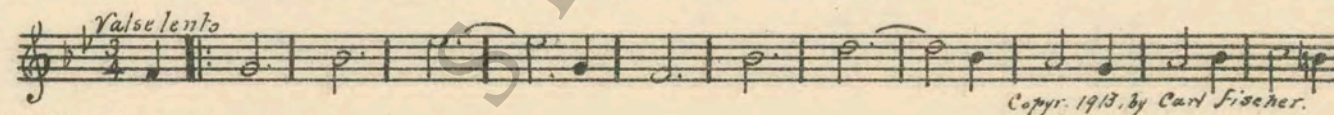


21 (Action) GIRL DANCES ON STAGE OF MUSIC HALL.. Mariette (Sterny) ..... 2½ Min.



NOTE: Play "PP" when dancing is not seen.

22 (Action) PIANIST STARTS TO PLAY ..... Aloha Oe Waltz (Lake) ..... ½ Min.

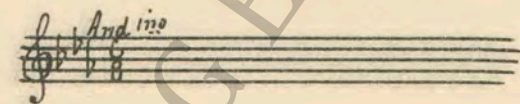


NOTE: Take tempo and rhythm from screen.

23 (Action) POLLY AND BABY IN BED ..... Rock-a-bye Baby (Luz) ..... 1 Min.



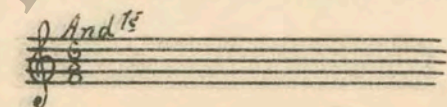
24 (Action) POLLY SINGS ON STAGE ..... Repeat No. 6 "The Message of the Violet" ..... 1 Min.



25 (Action) MAN ACCOSTS POLLY ..... Rhapsody Appassionato (Ketalbey) ..... 1 Min.

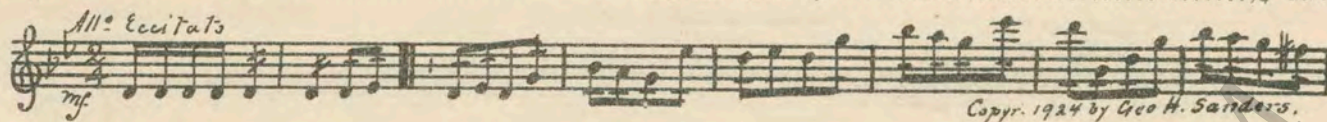


26 (Action) POLLY GIVES BABY TO WOMAN ..... Repeat No. 23 "Rock-a-bye-Baby" ..... ½ Min.



27 (Action) IN TELEGRAPH OFFICE ..... Moto Perpetuo (Weiss) ..... ¾ Min.

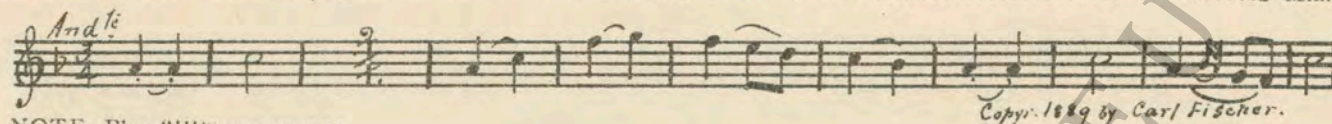
*All.<sup>o</sup> Eccitato*  
*mf*



Copyr. 1924 by Geo. H. Sanders.

28 (Action) MINISTER AND PEOPLE AROUND BABY ... Cradle Song (Hauser) ..... ½ Min.

*And.<sup>te</sup>*



Copyr. 1889 by Carl Fischer.

NOTE: Play "PP" con sordini.

29 (Title) ON THE DAY THE REVEREND ..... Music Box (Friml) ..... ¾ Min.

*All.<sup>o</sup> imp.<sup>o</sup> z.<sup>o</sup>*  
*p*



Copyr. 1923 by G. Schirmer.

30 (Action) IN DANCE HALL ..... Laughing Love (Christine) ..... ¾ Min.

*Two Step.*



Copyr. 1911 by E. B. Marks.

NOTE: Imitate or play as Accordion Solo.

31 (Action) POLLY COMES DOWNSTAIRS AND MEETS FATHER ..... Love Tragedy (Savino) ..... 4 Min.

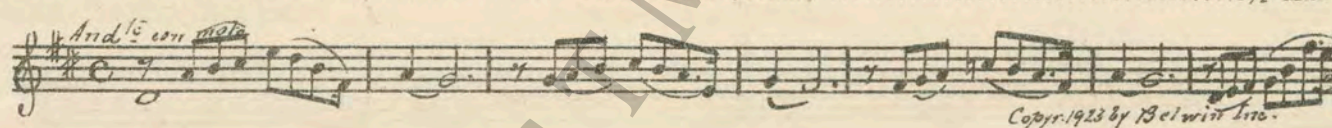
*And.<sup>te</sup>*



Copyr. 1924 by Robbins-Engel.

32 (Action) POLLY WITH HER BABY ..... Forlorn Hopes (Delille) ..... 1½ Min.

*And.<sup>te</sup> con moto*



Copyr. 1923 by Belwin Inc.

33 (Title) IT'S TEARING THE HEART OUT OF ME .... Lamento (Baron) ..... 1¼ Min.

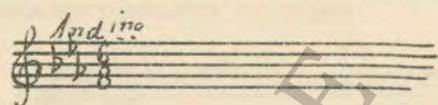
*And.<sup>te</sup> lamentoso*  
*p*



Copyr. 1921 by Belwin Inc.

34 (Action) PIANIST STARTS TO PLAY ..... Repeat No. 6 "The Message of the Violet" ..... 2¼ Min.

*And.<sup>te</sup>*  
*mf*



NOTE: Play as Piano Solo.

35 (Action) POLLY STOPS SINGING ..... Appassionato No. 2 (Axt) ..... 1¾ Min.

*All.<sup>o</sup> appassion.*  
*f*



Copyr. 1924 by Robbins-Engel.

36 (Title) BUT HOPE IS SLOW TO DIE ..... Elegie (Sibelius) ..... 4 Min.

*And.<sup>te</sup> sos.<sup>to</sup>*  
*mf*



Copyr. 1924 by Carl Fischer.

37 (Action) AUTO LEAVES .....L'Heure Bleue (Baron) .....4¼ Min.

*And.<sup>mo</sup>*  
135.  
*col 8va cor 7 Sord.*  
*PPP dolcis.*  
Copyr. by Belwin Inc.

38 (Action) FLASH-PACK TO SCENE—POLLY CONTINUES STORY ..... An Autumn Song (Haines) .....1 Min.

*And.<sup>mo</sup>*  
Copyr. 1917 by Hawkes & Co.

39 (Action) APACHE DANCE SEEN .....L'Amour de L'Apache (Offenbach).....¾ Min.

*Valse*  
Copyr. 1919, by E. B. Markos & Co.

40 (Action) FIGHT STARTS .....Chimene (Julien) .....1½ Min.

*All.<sup>mo</sup>*  
*mf*

NOTE: Start at Allegro. Drummer catch shot of gun.

41 (Action) POLLY SEES "LEONARD" ENGRAVED ON PLATE ON SOLDIER'S WRIST .....L'Onde Tragique (Gabriel Marie) .....4 Min.

*All.<sup>to</sup> poco Agitato*  
*p*

NOTE: Start at letter "A".

42 (Title) DEAD! AND WE WERE BUDDIES .....Hearts of Oak "Sounds from England" (Langley) .....½ Min.

*Maestoso*  
Copyr. by Carl Fischer.

43 (Title) NOT A MURDER .....L'Illusion Supreme (Gabriel Marie).....2½ Min.

*And.<sup>te</sup> pomposo*  
*cors.*

44 (Title) I HAVE A WONDERFUL MEMORY OF YOU..Repeat No. 23 "Rock-a-bye-Baby".....½ Min.

*And.<sup>te</sup>*

45 (Title) AND I HAVE A WONDERFUL MEMORY ....Film Theme No. 34 (Dvorak) .....2 Min.

*And.<sup>te</sup> con moto.*  
*mf*  
Copyr. 1924 by Carl Fischer.

46 (Title) NOW YOU KNOW WHY YOU .....Repeat Theme No. 9 .....1 Min.

*Valse lente*

NOTE: Start "PP" and finish "F".

THE END

Complete Orchestrations and single parts of all compositions contained herein can be purchased from CAMEO MUSIC SERVICE CORPORATION, 112-118 West 44th Street, New York City