

The Siren
Columbia Dist

May 3-5-5



Arizona
Universal
Two Themes

NORMA SHEARER in THE LATEST FROM PARIS

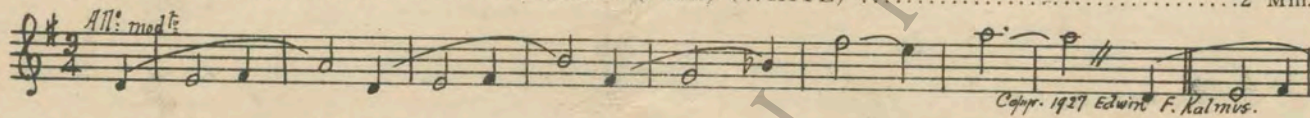
with
GEORGE SIDNEY — RALPH FORBES
A SAM WOOD PRODUCTION

Story and scenario by A. P. Younger
Directed by Sam Wood
Compiled by Ernst Luz

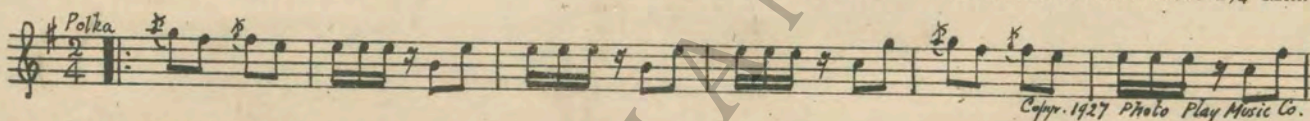
A METRO-GOLDWYN-MAYER PICTURE

Length of film 8 reels (7700 feet) Maximum projection time 1 hour, 30 minutes

1 AT SCREENING Adoree (Friml) (WHITE) 2 Min.



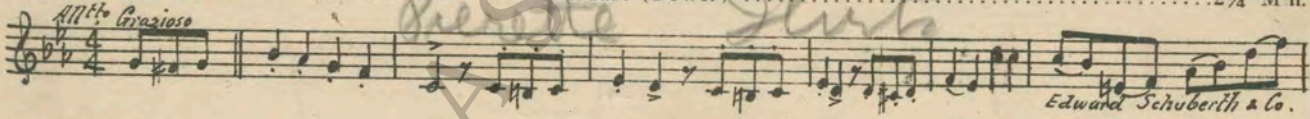
2 (Action) SIGN—"BLOGG AND LITTAUER" Viennese (Komzak) 2 1/4 Min.



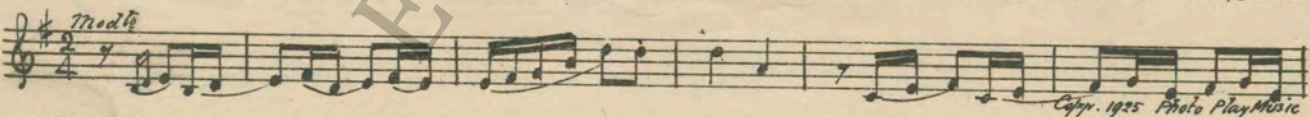
3 (Title) HE SHOULD BE DESIGNING Confidence (Waldteufel) 2 1/4 Min.



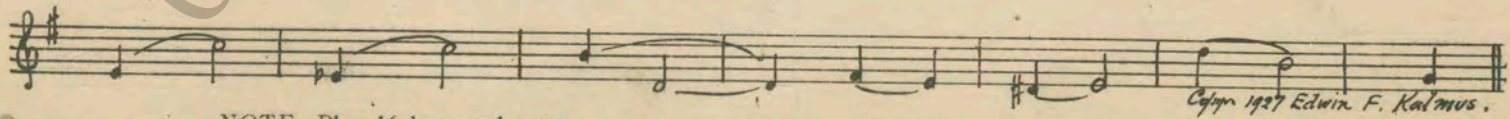
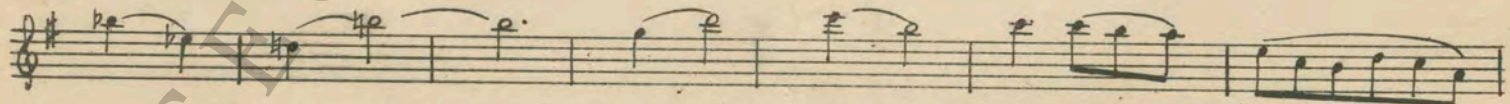
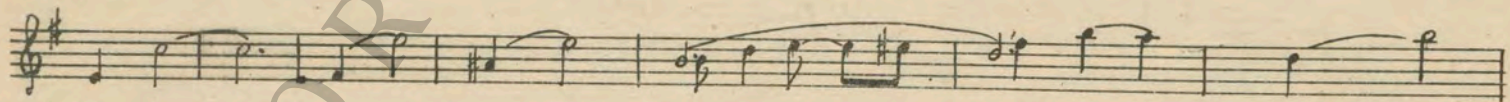
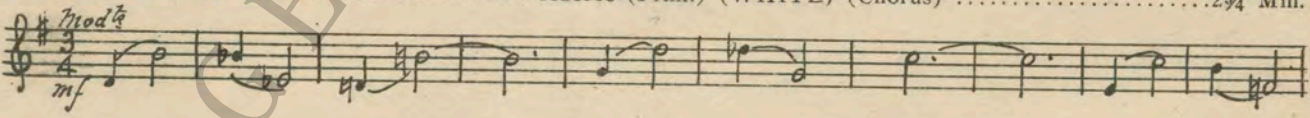
4 (Title) NOTE: Play introduction and waltz. GEE, NOW I'M GLAD Stardust (Power) 2 1/4 Min.



5 (Title) I'VE DECIDED Mountain Trails (Schoenfeld) 1/2 Min.



6 (Action) NOTE: Catch train effect. SIGN—"BLOGG AND LITTAUER" Adoree (Friml) (WHITE) (Chorus) 2 3/4 Min.



NOTE: Play 16 bars and segue.

Segue

SEGUE: Caressing Butterfly (Barthelemy)

Musical notation for 'Caressing Butterfly (Barthelemy)'. *All^{to}* *Copyright 1911 G. Schirmer.*

7 (Title) WELL, I'M GOING TO ROXBORO Love's Wilfulness (Barthelemy) 3¼ Min.

Musical notation for 'Love's Wilfulness (Barthelemy)'. *And^{te} appass.* *mf* *Copyright 1911 G. Schirmer.*

8 (Title) MR. ROBERTSON, I'M TAKING THIS LIBERTY Breath of Morn (Kempinski) 1¼ Min.

Musical notation for 'Breath of Morn (Kempinski)'. *And^{te} con moto* *Copyright 1911 G. Schirmer.*

Musical notation for 'Repeat No. 6 (WHITE)'. *1^{go}* *Copyright 1920 Photo Play Music.*

9 (Action) AUTO ON SCREEN AT STORE FRONT Repeat No. 6 (WHITE) ¾ Min.

(1) Musical notation for 'Repeat No. 6 (WHITE)'. *mod^{te}* *Copyright 1920 Photo Play Music.*

10 (Title) THE TRAVELLING MAN Love and Laughter (Cobb) 1½ Min.

Musical notation for 'Love and Laughter (Cobb)'. *All^o* *mf* *Copyright 1922 Walter Jacobs.*

11 (Action) SALESMAN LEAVES HOTEL DESK AFTER KEY ACTION Bowl of Pansies (Reynard) 3 Min.

Musical notation for 'Bowl of Pansies (Reynard)'. *mod^{te}* *mf* *Copyright 1914 Sam Fox.*

12 (Action) NORMA SHEARER TELEPHONING In Merry Mood (Axt) 1¾ Min.

Musical notation for 'In Merry Mood (Axt)'. *All^o scherz.* *Copyright 1925 Robbins Music Corp.*

13 (Title) THANKS FOR THE ORDER Blue Bells (Zamecnik) 2¾ Min.

Musical notation for 'Blue Bells (Zamecnik)'. *Mod^{te} grazioso* *Copyright 1919 Sam Fox Pul.*

14 (Action) WATER POURED ON HOUSE DETECTIVE... Little Fawn (Rosenbaum) ½ Min.

Musical notation for 'Little Fawn (Rosenbaum)'. *All^o* *Copyright 1905 M. Witmark & Sons.*

15 (Action) SALESMAN SEES GIRL IN OTHER TRAIN... Adoree (Friml) (WHITE) 2¾ Min.

(1) Musical notation for 'Adoree (Friml) (WHITE)'. *Mod^{te}* *Copyright 1927 Edwin F. Kalmus.*

NOTE: Play 16 bars and segue.
SEGUE: A Garden Dance (Vargas)

Musical notation for 'A Garden Dance (Vargas)'. *All^o mod^{te}* *Copyright 1914 Sam Fox.*

16 (Action) WRECK Agitato No. 1 (Armandola) ¼ Min.

Musical notation for 'Agitato No. 1 (Armandola)'. *All^o* *Copyright 1925 Roach & A.G.*

17 (Action) CLOSE-UP OF SALESMAN AND SHEARER... Adoree (Friml) (WHITE) 1 Min.

(1) Musical notation for 'Adoree (Friml) (WHITE)'. *Mod^{te}* *Copyright 1927 Edwin F. Kalmus.*

18 (Action) CHILD AT DOOR OF CAR PLATFORM.....Piquant Waltz (Lehar)2 Min.

Waltz
Musical notation for Piquant Waltz (Lehar). Copyright 1911 E. B. Marks.

19 (Title) IF HE EVER LOSES A FINGER.....Repeat No. 17 (WHITE)1 Min.

Mod^{to}
Musical notation for IF HE EVER LOSES A FINGER. Copyright 1911 E. B. Marks.

20 (Action) DEAF AND DUMB COUPLE LEAVE PLATFORMStorm Galop (Komzak) (LT. BLUE)3/4 Min.

Galop
Musical notation for Storm Galop (Komzak). Copyright 1927 Photo Play Music Co.

21 (Action) SIGN-SUMMERSVILLE HOTELSparklets (Miles)1 1/2 Min.

Mod^{to}
Musical notation for SIGN-SUMMERSVILLE HOTEL. Copyright 1912 Sam Fox.

22 (Title) WHAT'S MERRY ABOUT ITRang-Tang (Dabney)1/2 Min.

Mod^{to}
Musical notation for WHAT'S MERRY ABOUT IT. Copyright 1927 Leo Feist.

23 (Action) BOY PUTS DOWN TELEPHONESacred Night, Holy Night (Borch) (Violin and Piano).....1/4 Min.

And^{te}
Musical notation for Sacred Night, Holy Night (Borch). Copyright 1911 C. Fischer.

24 (Action) EXTERIOR SCENEIris (Reynard)1 3/4 Min.

Mod^{to}
Musical notation for EXTERIOR SCENE. Copyright 1916 Sam Fox, Pub.

25 (Action) GIRL PULLS DOWN WINDOW SHADE.....Repeat No. 20 (LT. BLUE)1 Min.

26 (Action) LOVERS MEET IN HOTEL LOBBYRepeat No. 17 (WHITE)3/4 Min.

27 (Action) BOY TAKES OFF OVERCOATRepeat No. 23 "Sacred Night, Holy Night" (Violin and Piano).....1 Min.

28 (Action) LOVERS WALK OUT OF HOTEL LOBBY.....Adoree (Friml) (WHITE)4 Min.

Allo mod^{to}
Musical notation for Adoree (Friml). Copyright 1927 Edwin F. Kalmus.

NOTE: Play once and segue.
SEGUE:Dreamland Shadows (Holzel)

And^{te}
Musical notation for Dreamland Shadows (Holzel). Copyright 1924 C. Fischer.

29 (Title) JOE DEAR, I'M AFRAIDAndante Appassionato (Soro)2 1/2 Min.

Mod^{to}
Musical notation for JOE DEAR, I'M AFRAID. Copyright 1924 G. Schirmer.

30 (Action) NORMA SHEARER GOES UPSTAIRS IN HOTEL-LOVER ENTERS HOTEL LOBBYIncid. Symphony No. 11 (Hauenschild)1 1/4 Min.

Allo mod^{to}
Musical notation for Incid. Symphony No. 11 (Hauenschild). Copyright 1922 Photo Play Music Co.

31 (Action) NORMA PULLS DOWN WINDOW SHADE....Love's Melody (Daniderff)1 1/4 Min.

Berceuse
Musical notation for Love's Melody (Daniderff). Copyright 1921 Edw. B. Marks.

32 (Action) NORMA SHEARER SHOWS ON SCREEN.....Repeat No. 30 "Incid. Symphony No. 11"1 1/4 Min.

33 (Action) BROTHER KISSES NORMA SHEARERNight Song (Stults)2 Min.

And^{te}
Musical notation for Night Song (Stults). Copyright 1913 M. Witmark & Sons.

Segue

in the Silence of Night

Drain Suspense

Return to me soon

"With you" - (2)

- 34 (Title) WITH YOU Repeat No. 20 (LT. BLUE) 2½ Min.
 35 (Action) NORMA SHEARER HANGS UP TELEPHONE. A Spring Day (Haines) 1½ Min.

Spirit of youth

All^{to}

 Copyright 1919 Hawkes & Son.

- 36 (Action) FADE AFTER TITLE: "ALWAYS IT'S CHEAPER" Gerbe de Roses (Franceschi) 2 Min.

Meno cantabile

 Sonnemann Music Co.

- 37 (Title) FATHER, JOE AND I ARE GOING TO BE MARRIED Little Trifler (Barnard) ½ Min.

Mod^{to}

 Copyright 1902 C. Fischer.

- 38 (Action) HOTEL REGISTER ON SCREEN Golden Sand (Finck) 2 Min.

Mod^{to}

 Copyright 1924 Hawkes & Son.

- 39 (Action) BEDROOM SCENE AFTER MEN SHAKE HANDS Viennese (Komzak) 1¼ Min.

Polka

 Copyright 1927 Photo Play Music Co.

- 40 (Action) TWO MEN LEAVE GIRL'S BEDROOM Repeat No. 28 (WHITE) 2½ Min.
 41 (Action) LOVER LEAVES GIRL'S BEDROOM Loves Glamour (Varley) 3 Min.

And^{te} con mov^{to}

 Copyright 1922 Belwin Inc.

- 42 (Action) TWO PARTNERS LEAVE BEDROOM Springtime of Life (Marquardt) 2¼ Min.

All^{to}

 Copyright 1925 Music Buyers Corp.

- 43 (Title) TAKE A TIP Trembling Agitato (Kilenyi) 1 Min.

All: agitato

 Copyright 1925 Belwin Inc.

- 44 (Action) SLEIGH DRIVES OFF By-Gone Days (Pintel) 1 Min.

And^{te}

 Copyright 1922 Belwin Inc.

- 45 (Title) I ALWAYS SAID Adoree (Friml) (WHITE) 1 Min.

Mod^{to}

 Copyright 1927 Edwin F. Kalms.

THE END

Proper rest period is Nos. 11 to 20 inclusive.

NOTE: The repetition of numbers in this cue sheet is simplified by the use of the "LUZ" SYMPHONIC COLOR GUIDE, sold by Music Buyers Corporation, 1520 Broadway, New York City. The color suggested for repetition of numbers designates the Mood or Emotion, and is used as a code for such repetitions.

Country of Origin, U. S. A.

Complete orchestrations and single piano parts of each separate number contained herein, can be purchased from CAMBO MUSIC SERVICE CORPORATION, 315-317 WEST 47TH STREET, NEW YORK CITY.