

Arcade
DVI 35
Aug 29-30-31st
Sept 1st



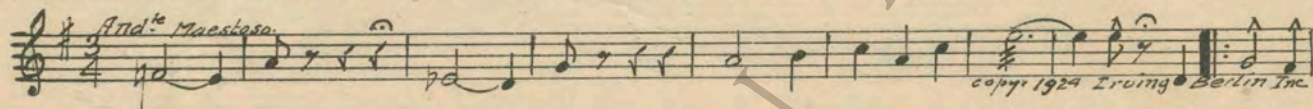
TIM McCOY in THE LAW OF THE RANGE

with
JOAN CRAWFORD
A William Nigh Production
Story by Norman Houston
Scenario by Richard Schayer
Directed by William Nigh
Compiled by Ernst Luz

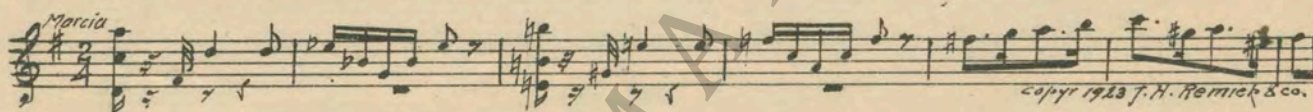
A METRO-GOLDWYN-MAYER PICTURE

Length of film 6 reels (5350 feet) Maximum projection time 1 hour, 12 minutes

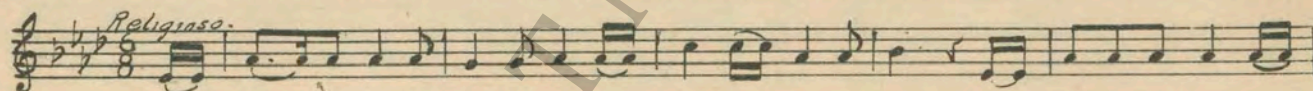
- 1 AT SCREENING Prelude to "Romances of the Seven Seas" (Baron) 1 Min.



- 2 (Title) OVER THE ENDLESS STRETCHES Westward Ho (Riesefeld) 1 1/2 Min.



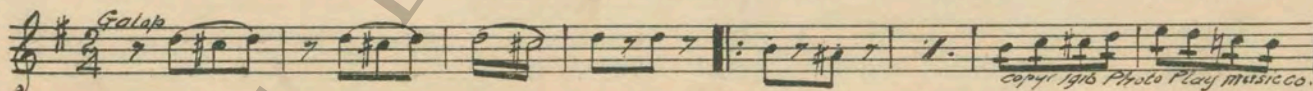
- 3 (Title) SING THAT HYMN The Ninety and Nine (Clephane) 1/2 Min.



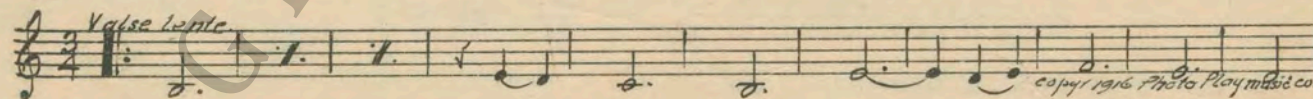
- 4 (Action) AFTER SONG TITLE A. B. C. Dram. Set No. 12-B2 (Luz) 1 1/2 Min.



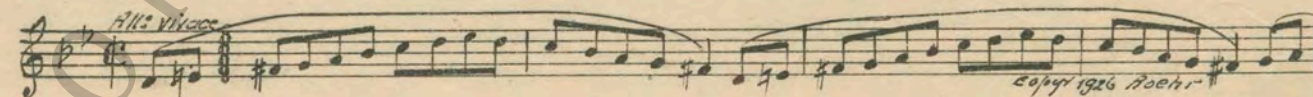
- 5 (Title) TEXAS RANGERS A. B. C. Dram Set No. 12-C3 (Luz) (Open "PP") 3/4 Min.



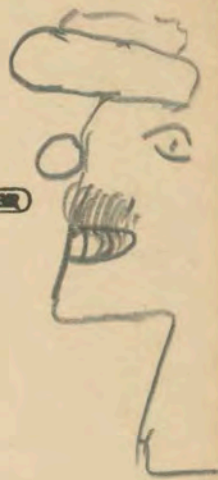
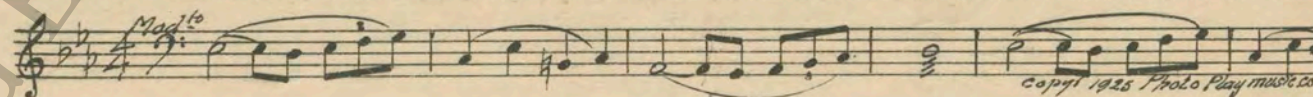
- 6 (Title) THEY'VE TAKEN MY BABY A. B. C. Dram. Set No. 12-D4 (Luz) 3/4 Min.



- 7 (Action) FADE-OUT OF WAGON Hurry No. 7 (Armandola) (LT. BLUE) 2 Min.

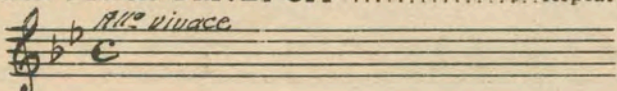


- 8 (Action) BANDIT TAKES BAG FROM AROUND
MAN'S NECK Incid. Symphony No. 27 (Damaur) (RED) 1 Min.

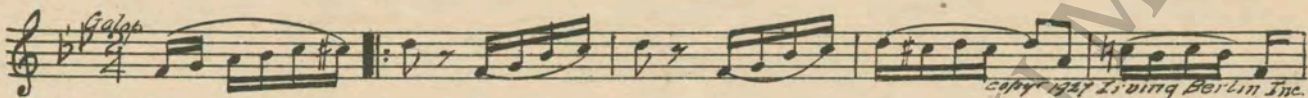


MUSEUM

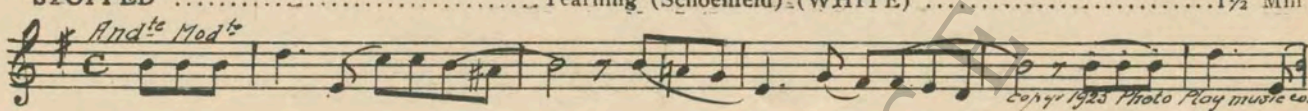
9 (Action) STAGE COACH DRIVES OFF Repeat No. 7 (LT. BLUE) 1/2 Min.



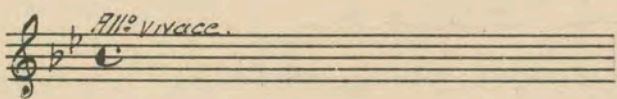
10 (Action) HORSES RUN AWAY A Chase Through the Clouds (Lakay) 1 Min.



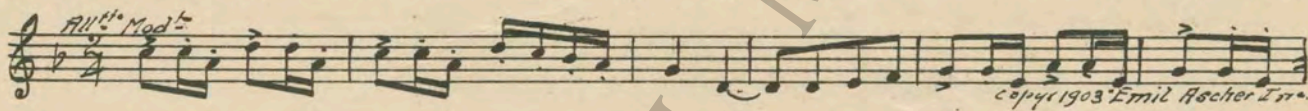
11 (Action) HORSES LASSOED—STAGE COACH STOPPED Yearning (Schoenfeld) (WHITE) 1 1/2 Min.



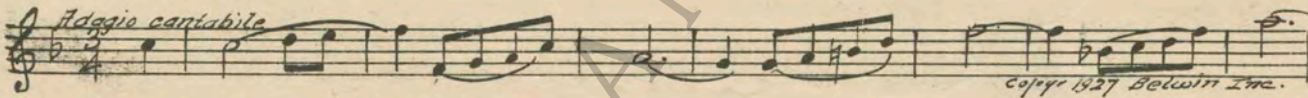
12 (Action) STAGE COACH DRIVES OFF Repeat No. 7 (LT. BLUE) 1 Min.



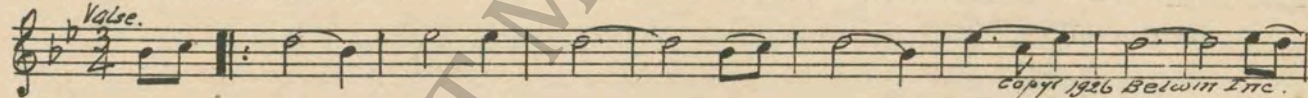
13 (Title) THE TOWN OF AMARILLA Laughing Water (Hager) 1 Min.



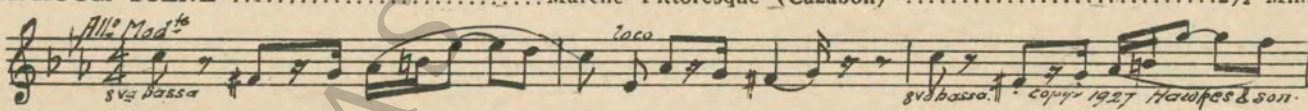
14 (Action) STAGE COACH ARRIVES Scene d'Amour (Baron) 1 1/2 Min.



15 (Action) BARTENDER PUTS BOTTLE OF LIQUOR ON BAR Swanee Dreams (Baron) 1/2 Min.



16 (Action) BAR-ROOM SCENE Marche Pittoresque (Cazabon) 2 1/2 Min.



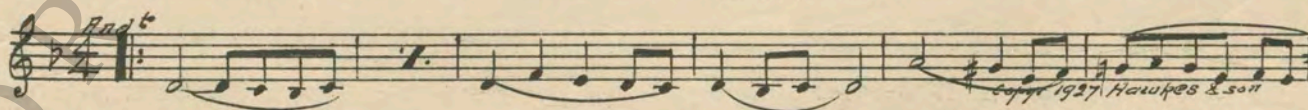
17 (Title) MISS DALLAS CAME IN ON THE STAGE COACH Repeat No. 8 (RED) 3/4 Min.



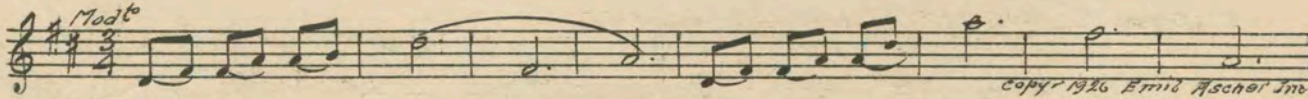
18 (Action) HOME SCENE—MOTHER SHOWS ON SCREEN Roguish Eyes (Gruenwald) 1 1/4 Min.



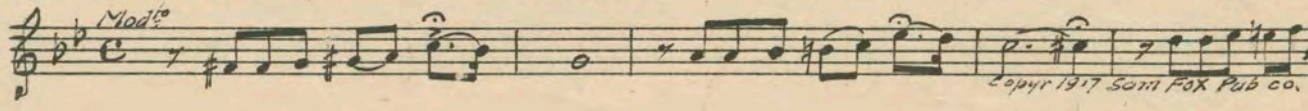
19 (Action) TATTOO MARKS SHOWN ON SCREEN The Tragic Discovery (Patou) 1 1/4 Min.



20 (Title) CAREFULLY GOING OVER THE SCENE Eternal Poem (Weiller) 1 Min.



21 (Title) SOUVENIRS OF A HUNDRED ADVENTURES. Tears (Zamecnik) 1 1/2 Min.



22 (Title) IS THIS THE CLOAK Incid. Symphony No. 27 (Damaur) (RED) 1/2 Min.

Musical notation for item 22, featuring a treble clef, a key signature of two flats, and a 4/4 time signature. The tempo marking is *Mod^{to}*. The notation includes a series of eighth and quarter notes. A copyright notice at the bottom right reads "copyr 1923 Photo Play music co."

23 (Title) OH! HOW CAN YOU Yearning (Schoenfeld) (WHITE) 3/4 Min.

Musical notation for item 23, featuring a treble clef, a key signature of two flats, and a 4/4 time signature. The tempo marking is *And^{te} Mod^{to}*. The notation includes a series of eighth and quarter notes. A copyright notice at the bottom right reads "copyr 1923 Photo Play music co."

24 (Action) TWO MEN ON PORCH OF RANCH Repeat No. 22 (RED) 3/4 Min.

Musical notation for item 24, consisting of a bass clef, a key signature of two flats, and a 4/4 time signature. The tempo marking is *Mod^{to}*. The notation is mostly blank, with only a few notes visible.

25 (Action) TIM McCOY OFF SCREEN—GIRL SEEN Summer Nights (Roberts) 2 Min.

Musical notation for item 25, featuring a treble clef, a key signature of two flats, and a 4/4 time signature. The tempo marking is *And^{te}*. The notation includes a series of eighth and quarter notes. A copyright notice at the bottom right reads "copyr 1918 Sam Fox Pub co."

26 (Title) THE KID PLANNED Repeat No. 22 (RED) 1 Min.

Musical notation for item 26, consisting of a bass clef, a key signature of two flats, and a 4/4 time signature. The tempo marking is *Mod^{to}*. The notation is mostly blank, with only a few notes visible.

27 (Action) COIN TOSSED—KID RIDES OFF Poursuite Impitoyable (Baron) 1 1/4 Min.

Musical notation for item 27, featuring a treble clef, a key signature of two flats, and a 4/4 time signature. The tempo marking is *All^o Agitato*. The notation includes a series of eighth and quarter notes. A copyright notice at the bottom right reads "copyr 1926 M. Baron"

28 (Action) KID CLIMBS UP INTO TREE Repeat No. 22 (RED) 3/4 Min.

Musical notation for item 28, consisting of a bass clef, a key signature of two flats, and a 4/4 time signature. The tempo marking is *Mod^{to}*. The notation is mostly blank, with only a few notes visible.

29 (Action) SHOT Rapture (Zamecnik) 1 1/4 Min.

Musical notation for item 29, featuring a treble clef, a key signature of two flats, and a 4/4 time signature. The tempo marking is *Con Anima*. The notation includes a series of eighth and quarter notes. A copyright notice at the bottom right reads "copyr 1925 Sam Fox Pub. co."

30 (Action) TIM McCOY CLIMBS UP ON HORSE'S BACK—FIRE STARTS Hurry No. 2 (Armandola) (LT. BLUE) 2 Min.

Musical notation for item 30, featuring a treble clef, a key signature of two flats, and a 4/4 time signature. The tempo marking is *All^o vivace*. The notation includes a series of eighth and quarter notes. A copyright notice at the bottom right reads "copyr 1926 Koehr."

31 (Action) TIM McCOY SEEN AT DALLAS RANCH Repeat No. 23 (WHITE) 1 1/4 Min.

Musical notation for item 31, featuring a treble clef, a key signature of two flats, and a 4/4 time signature. The tempo marking is *And^{te} Mod^{to}*. The notation is mostly blank, with only a few notes visible.

32 (Action) MISS DALLAS STARTS TO BATHE TIM McCOY'S FACE Repeat No. 30 (LT. BLUE) 1 Min.

Musical notation for item 32, featuring a treble clef, a key signature of two flats, and a 4/4 time signature. The tempo marking is *All^o vivace*. The notation is mostly blank, with only a few notes visible.

33 (Action) RANGERS STOP AT DALLAS RANCH The Verdict (Zamecnik) 3/4 Min.

Musical notation for item 33, featuring a treble clef, a key signature of two flats, and a 4/4 time signature. The tempo marking is *And^{te} Mod^{to}*. The notation includes a series of eighth and quarter notes. A copyright notice at the bottom right reads "copyr 1922 Sam Fox Pub co."

34 (Action) BANDIT ENTERS ROOM THROUGH WINDOW Repeat No. 22 (RED) 1 1/2 Min.

Musical notation for item 34, consisting of a bass clef, a key signature of two flats, and a 4/4 time signature. The tempo marking is *Mod^{to}*. The notation is mostly blank, with only a few notes visible.

35 (Action) STRUGGLE Treachery and Vengeance (Fletcher) 1/2 Min.

Moderately Slow
 Musical notation for 'STRUGGLE' in treble clef, 4/4 time, key of D major. The melody is moderately slow and features a mix of eighth and quarter notes.
Copyright 1926 Hawkes & Son.

36 (Action) RAY COVERS KID WITH REVOLVER Repeat No. 22 (RED) 1/4 Min.

Mod^{to}
 Musical notation for 'RAY COVERS KID WITH REVOLVER' in bass clef, 4/4 time, key of D major. The notation is mostly blank with a few notes.
Copyright 1926 Hawkes & Son.

37 (Action) KID ESCAPES Flick and Flock (Patou) 2 Min.

All^o
 Musical notation for 'KID ESCAPES' in treble clef, 4/4 time, key of D major. The tempo is marked 'All^o' (Allegro). The melody is lively and features eighth and sixteenth notes.
Copyright 1923 Hawkes & Son.

38 (Action) HORSE SHOT Vengeance (Franceschi) 1 Min.

Len^o
 Musical notation for 'HORSE SHOT' in treble clef, 4/4 time, key of D major. The tempo is marked 'Len^o' (Lento). The melody is slow and features a mix of eighth and quarter notes.
Copyright 1926 Franceschi.

39 (Action) KID THROWS REVOLVER Furioso No. 2 (Zamecnik) (Open "PP") 2 Min.

All^o
 Musical notation for 'KID THROWS REVOLVER' in treble clef, 4/4 time, key of D major. The tempo is marked 'All^o' (Allegro). The melody is fast and features a mix of eighth and quarter notes.
Copyright 1926 Sam Fox Pub. Co.

40 (Action) TIM McCOY SEES TATTOO MARK The Sacrifice (Zamecnik) 1 1/2 Min.

And^{te}
 Musical notation for 'TIM McCOY SEES TATTOO MARK' in treble clef, 4/4 time, key of D major. The tempo is marked 'And^{te}' (Andante). The melody is slow and features a mix of eighth and quarter notes.
Copyright 1926 Sam Fox Pub. Co.

41 (Title) I CAN'T TAKE YOU BACK Repeat No. 30 (LT. BLUE) 1 1/4 Min.

All^o Vivace
 Musical notation for 'I CAN'T TAKE YOU BACK' in treble clef, 4/4 time, key of D major. The tempo is marked 'All^o Vivace'. The melody is fast and features a mix of eighth and quarter notes.
Copyright 1926 Sam Fox Pub. Co.

42 (Action) TIM McCOY COVERS BROTHER WITH MUD. Sorrow (Macat) 2 Min.

Marcia
 Musical notation for 'TIM McCOY COVERS BROTHER WITH MUD' in treble clef, 4/4 time, key of D major. The tempo is marked 'Marcia'. The melody is slow and features a mix of eighth and quarter notes.
Copyright 1926 Hamrich & Hafen.

43 (Title) DID SHE SEE THE TATTOO The Ninety and Nine (Clephan) 1 Min.

Adagio
 Musical notation for 'DID SHE SEE THE TATTOO' in treble clef, 4/4 time, key of D major. The tempo is marked 'Adagio'. The melody is slow and features a mix of eighth and quarter notes.
Copyright 1926 Hamrich & Hafen.

44 (Action) MOTHER COVERS UP BOY'S FACE Yearning (Schoenfeld) (WHITE) 1 1/4 Min.

NOTE: Play pathetically.
And^{te} Mod^{to}
 Musical notation for 'MOTHER COVERS UP BOY'S FACE' in treble clef, 4/4 time, key of D major. The tempo is marked 'And^{te} Mod^{to}'. The melody is slow and features a mix of eighth and quarter notes.
Copyright 1925 Photo Play Music Co.

THE END

Proper rest period is Nos. 20 to 32 inclusive.
NOTE: The repetition of numbers in this cue sheet is simplified by the use of the "LUZ" SYMPHONIC COLOR GUIDE, sold by Music Buyers Corporation, 1520 Broadway, New York City. The color suggested for repetition of numbers designates the Mood or Emotion, and is used as a code for such repetitions.

Country of Origin, U. S. A.

Complete orchestrations and single piano parts of each separate number contained herein, can be purchased from CAMEO MUSIC SERVICE CORPORATION, 21-217 WEST 6TH STREET, NEW YORK CITY.