

Friday
Jan 1

Thematic Music Cue Sheet

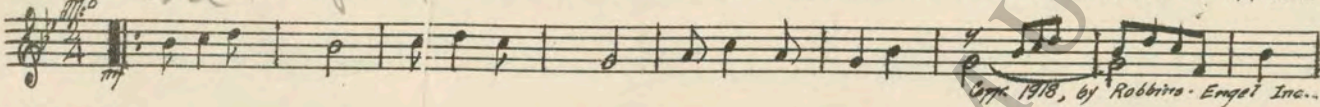
M. J. MINTZ (PATENT)
JULY 31, 1923.

C. C. Burr
presents

JOHNNY HINES
IN
"THE LIVE WIRE"

Music compiled by James C. Bradford
A FIRST NATIONAL PICTURE

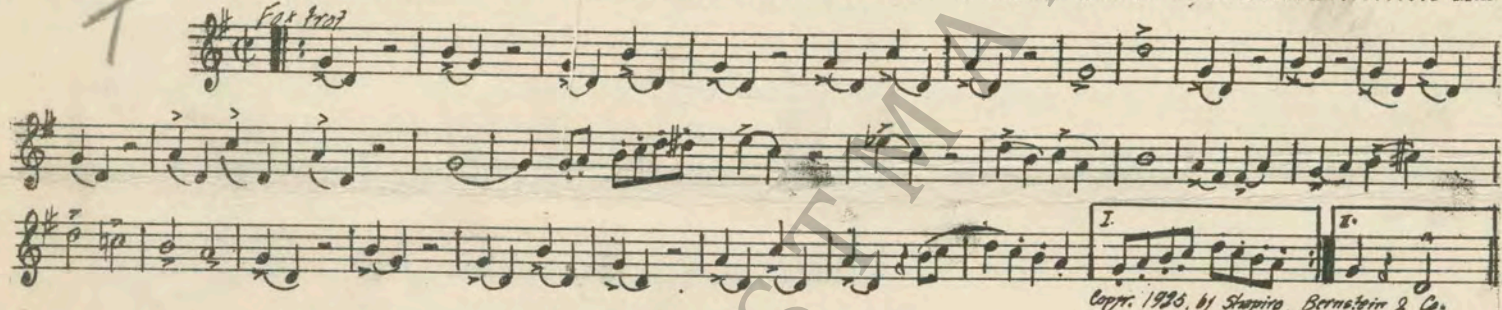
1 AT SCREENING *One Step* Historical Medley (Cohan) ¾ Min.



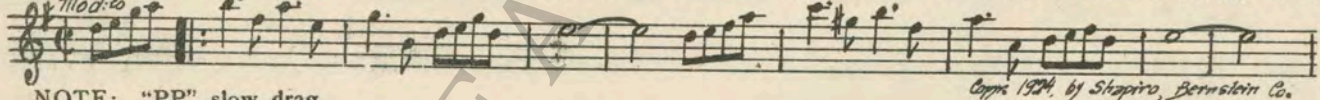
2 (Title) THE CIRCUS Aeroplane Galop (Lamothe) 1¼ Min.



3 (Title) THE GREAT MARINELLI HINES THEME: Collegiate (Jaffe) 1 Min.



4 (Action) START CARD GAME Ev'rything You Do (Hirsch) 2½ Min.

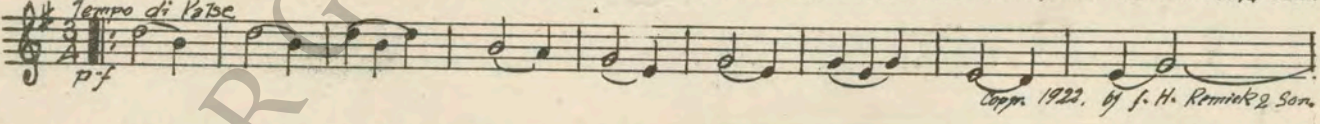


NOTE: "PP" slow drag.

5 (Action) GAME ENDS—CIRCUS RING Skaters Galop (Fahrbach) ½ Min.



6 (Action) CURTAINS CLOSE—PALS TOGETHER My Buddy (Donaldson) ¾ Min.

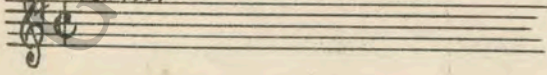


7 (Action) CURTAINS OPEN—MARINELLI ENTERS In Shadowland (Ahlert) 1½ Min.



NOTE: S. D. roll for slide.

8 (Action) LANDS SAFELY Repeat Hines Theme No. 3 ¾ Min.



D = Balloon girl, II

9 (Action) **BALLOON GIRL** GIRL THEME: Yes, Sir, That's My Baby (Donaldson)..... ¾ Min.

Handwritten Roman numeral **II** above the first staff. Musical notation for 'BALLOON GIRL' featuring a 'Fox Trot' tempo marking. The piece consists of three staves of music.

Copy. 1925, by Irving Berlin.

NOTE: Hit with ball.
10 (Title) **UNDER THE GUIDING HAND**..... Away From You (Davis)..... 1½ Min.

Musical notation for 'UNDER THE GUIDING HAND' featuring a 'Valse' tempo marking. The piece consists of two staves of music.

Copy. by Hprt, Yellen & Bornstein

11 (Action) **DOROTHY ENTERS OFFICE**..... Oh Boy, What A Girl (Green)..... 1¾ Min.

Musical notation for 'DOROTHY ENTERS OFFICE' featuring a 'Mod.to' tempo marking and a 'p' dynamic. The piece consists of two staves of music.

Copy. 1925, by Shapiro, Bernstein Co.

12 (Title) **CHANGES COME FAST**..... Lazy (Berlin) 2 Min.

Musical notation for 'CHANGES COME FAST' featuring a 'Mod.to' tempo marking and an 'f' dynamic. The piece consists of two staves of music.

Copy. 1924, by Irving Berlin

13 (Action) **THEY SEE COW**..... Tea For Two (Youmans)..... 1½ Min.

Musical notation for 'THEY SEE COW' featuring a 'Mod.to' tempo marking. The piece consists of two staves of music.

Copy. 1925, by Harms, Inc.

NOTE: Play two choruses.
SEGUE: Down Home Rag (Sweetman)

Musical notation for 'SEGUE: Down Home Rag' featuring a 'Mod.to' tempo marking and an 'mf' dynamic. The piece consists of two staves of music.

Copy. of Will Kaswell.

14 (Action) **RAILROAD TRACKS** Alabamy Bound (Henderson)..... 1½ Min.

Musical notation for 'RAILROAD TRACKS' featuring a 'Fox Trot' tempo marking. The piece consists of two staves of music.

Copy. 1926, by Shapiro, Bernstein Co.

NOTE: Whistle and locomotive effects. Play introduction and two choruses.

15 (Action) **THEY WALK AWAY FROM TRAIN**..... Splivins' Corners (Ellis)..... ¾ Min.

Musical notation for 'THEY WALK AWAY FROM TRAIN' featuring a 'Mod.to' tempo marking and an 'mf' dynamic. The piece consists of two staves of music.

Copy. by Volkwein Bros.

16 (Action) **JOHNNY AND SAM WALK FROM STORE**... Repeat Hines Theme No. 3..... ½ Min.

Musical notation for 'JOHNNY AND SAM WALK FROM STORE' featuring a 'Fox Trot' tempo marking. The piece consists of two staves of music.

17 (Action) **TRAMP'S CAMP** Creepy (Breau) 1 Min.

Musical notation for 'TRAMP'S CAMP' featuring a 'Jazz Hot' tempo marking and a 'p' dynamic. The piece consists of two staves of music.

Copy. 1923, by Belwin Inc.

18 (Action) **GROCERY STORE ENTRANCE**..... Spangles (Bratton) 1¾ Min.

Musical notation for 'GROCERY STORE ENTRANCE' featuring a '177-0' tempo marking. The piece consists of two staves of music.

Copy. 1906, by Carl Fischer.

D. Grocer starts to throw vegetables

19 (Action) GROCER STARTS TO THROW VEGETABLES. Gigue (Gretry-Mottl) ¾ Min.

Musical notation for Gigue (Gretry-Mottl). Includes dynamics *pp* and *pp*. Copyright 1916 by Carl Fischer.

NOTE: Catch throwing act.

20 (Action) JOHNNY JOINS TRAMP FRIENDS..... Repeat No. 17 "Creepy"..... ½ Min.

Musical notation for "Creepy". Includes dynamics *pp*. Handwritten note: "The Sneak".

21 (Title) MUSIC BY THE KNIGHTS OF..... Charleston (Johnson) ¾ Min.

Musical notation for Charleston (Johnson). Includes dynamics *pp*. Copyright 1923 by Harms, Inc.

NOTE: Play two choruses.

22 (Title) NOW FOR A PLUNGE..... Skirt Dance from "Boom Zing Boom" (Brooks)..... 2 Min.

Musical notation for "Boom Zing Boom". Includes dynamics *p*. Copyright by Carl Fischer.

23 (Action) REVENUE MEN BREAK CASK..... Blue Law Blues (Lake)..... ¾ Min.

Musical notation for Blue Law Blues (Lake). Includes dynamics *mf*. Handwritten note: "Near Bear". Copyright 1921 by Carl Fischer.

24 (Action) JOHNNY DUCKS UNDER WATER..... Follow the Swallow (Henderson)..... 1 Min.

Musical notation for Follow the Swallow (Henderson). Includes dynamics *mf*. Copyright 1924 by J. H. Remick & Co.

25 (Action) GIRLS IN MACHINE..... Repeat Girl Theme No. 9..... 1¾ Min.

Musical notation for Repeat Girl Theme No. 9. Includes dynamics *mf*. Handwritten note: "Fox trot".

26 (Action) DOROTHY LOOKS AT HINES..... Will You Remember Me? (Santly)..... ¾ Min.

Musical notation for Will You Remember Me? (Santly). Includes dynamics *mf*. Copyright 1924 by Leo Feist.

27 (Title) SAM, I ONCE WENT TO MEADVILLE..... Save Your Sorrow (DeSylva)..... 1½ Min.

Musical notation for Save Your Sorrow (DeSylva). Includes dynamics *mf*. Copyright 1925 by Shapiro, Bernstein Co.

28 (Title) ONE SECTION OF..... Old Timers (Lake)..... 1¾ Min.

Musical notation for Old Timers (Lake). Includes dynamics *mp*. Copyright 1917 by Carl Fischer.

29 (Action) JOHNNY ASKS FOR PIECE OF PUTTY..... Big Boy (Ager)..... 2 Min.

Musical notation for Big Boy (Ager). Includes dynamics *mf*. Copyright 1924 by Ager, Gatten & Bornstein.

NOTE: Wind whistle when he moves safe.

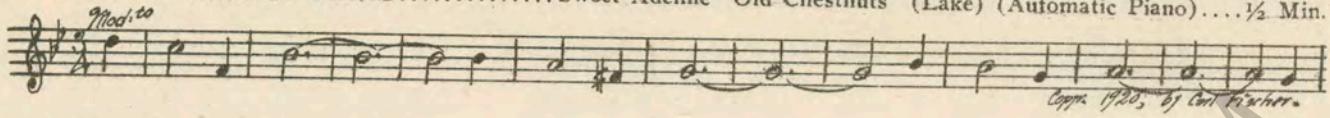
30 (Action) SHAKES HANDS WITH SAM ON STREET..... Happy Go Lucky (Kaufman)..... 1½ Min.

Musical notation for Happy Go Lucky (Kaufman). Includes dynamics *mf*. Copyright 1924 by Robbins-Engel.

NOTE: Catch falls through man hole.

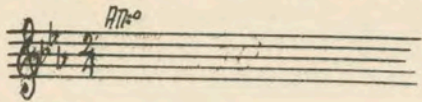
Handwritten note: "D. Man Drops Nickel in Piano"

31 (Action) MAN DROPS NICKEL IN PIANO..... Sweet Adeline "Old Chestnuts" (Lake) (Automatic Piano).... 1/2 Min.



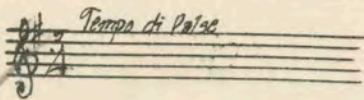
Copyright 1925, by Carl Fischer.

32 (Action) JOHNNY THROWS CAT IN PIANO..... Repeat No. 30, "Happy Go Lucky"..... 1 Min.



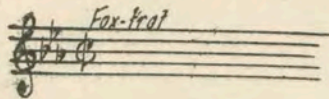
me-ow One Step

33 (Title) IF I PAY FOR SIGN..... Rpeat No. 6, "My Buddy"..... 1/2 Min.

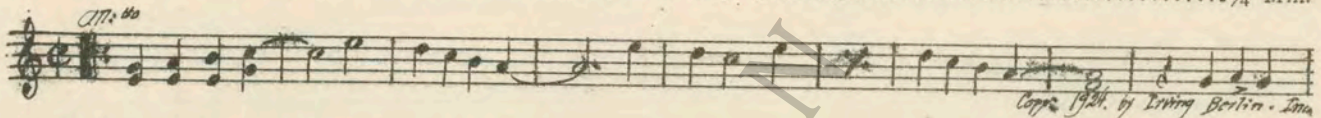


34 (Action) INSERT-DOROTHY'S CARD Repeat Girl Theme No. 9..... 1/2 Min.

II

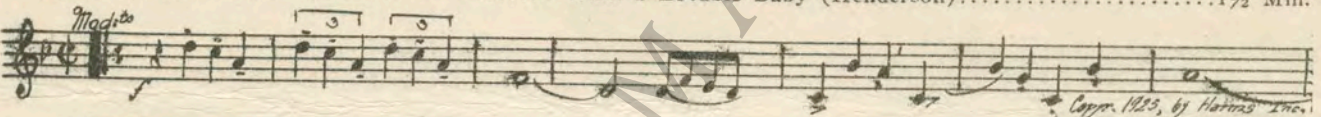


35 (Title) A FEW MINUTES LATER..... Charley, My Boy (Fiorito)..... 1 1/4 Min.



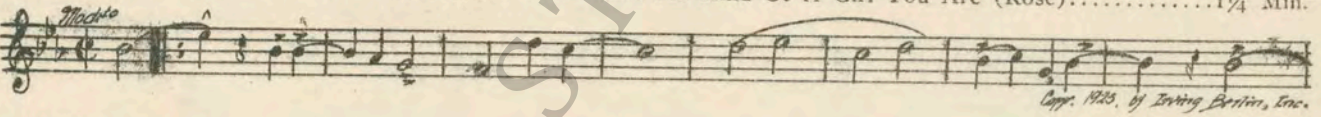
Copyright 1924, by Irving Berlin, Inc.

36 (Action) JOHNNY TAKES HOLD OF DOROTHY'S HAND I Want a Lovable Baby (Henderson)..... 1 1/2 Min.



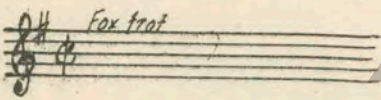
Copyright 1925, by Harms, Inc.

37 (Title) TRENT ENTERS-COME ON WE'LL BE LATE So That's the Kind Of A Girl You Are (Rose)..... 1 1/4 Min.

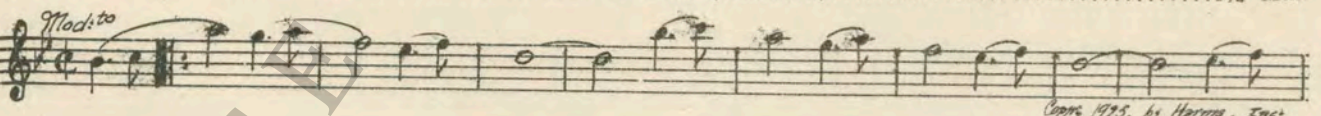


Copyright 1925, by Irving Berlin, Inc.

38 (Title) THE SLIDE OF LIFE..... Repeat Hines Theme No. 3..... 1 Min.

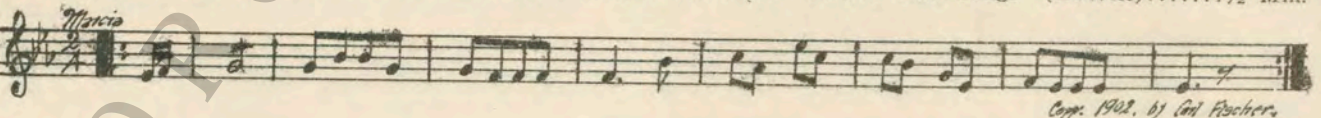


39 (Action) DOROTHY DRIVES UP IN AUTO..... Tell Me More (Gershwin)..... 1 1/4 Min.



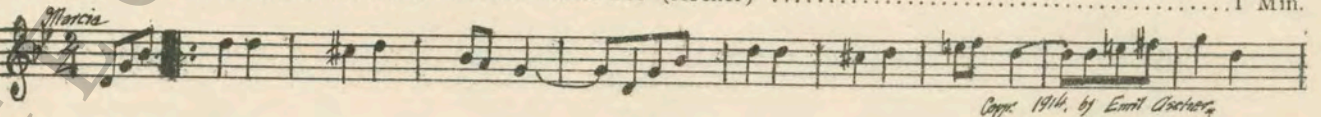
Copyright 1925, by Harms, Inc.

40 (Action) DOROTHY DRIVES AWAY..... Wearing of the Green "Twelve Irish Songs" (DeWitt)..... 1/2 Min.



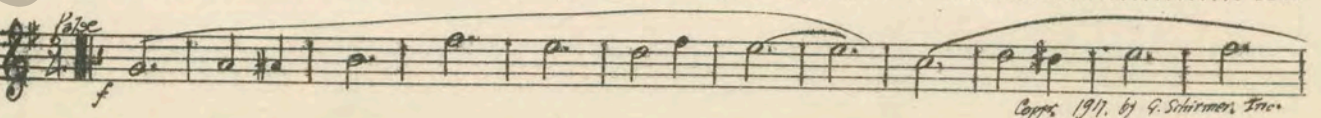
Copyright 1902, by Carl Fischer.

41 (Action) JEW IN DOORWAY SORE..... Mazel-Tof (Ascher) 1 Min.



Copyright 1914, by Emil Ascher.

42 (Action) FATHER IN OFFICE..... Forget Me Not (McKee)..... 1 Min.



Copyright 1911, by G. Schirmer, Inc.

D. Dorothy rushes into office -

43 (Action) DOROTHY RUSHES INTO OFFICE..... Oh Mister (Frey)..... 1 Min.

Musical notation for item 43, featuring a treble clef, a key signature of one sharp (F#), and a 2/4 time signature. The tempo is marked 'Mod.to' and the dynamics are 'p'. Copyright information: 'Copp. 1924, by Robbins-Engel, Inc.'

44 (Title) I LANDED THE THEATRE..... Oh Say! Can I See You Tonight (Creamer)..... 1/2 Min.

Musical notation for item 44, featuring a treble clef, a key signature of one sharp (F#), and a 2/4 time signature. The tempo is marked 'Mod.to' and the dynamics are 'mf'. Copyright information: 'Copp. 1925, by Jerome H. Remick.'

45 (Title) I'VE ALWAYS BEEN..... Over the Waves (Rosas)..... 1 1/2 Min.

Musical notation for item 45, featuring a treble clef, a key signature of one sharp (F#), and a 2/4 time signature. The tempo is marked 'Valse' and the dynamics are 'p'. Copyright information: 'Copp. by G. Carter.'

46 (Title) THE NEW CHOP SUEY SIGN..... Rural Flirts (Bradford)..... 1/2 Min.

Musical notation for item 46, featuring a treble clef, a key signature of one sharp (F#), and a 2/4 time signature. The tempo is marked 'Mod.to' and the dynamics are 'p'. Copyright information: 'Copp. 1925, Belwin, Inc.'

47 (Title) YOUR NEW SIGN..... Repeat No. 41, "Mazel-Tof"..... 1/2 Min.

Musical notation for item 47, featuring a treble clef, a key signature of one sharp (F#), and a 2/4 time signature. The tempo is marked 'Marcia'.

48 (Action) IRISH FLAG SHOWS..... Repeat No. 40, "Wearing of the Green"..... 1 Min.

Musical notation for item 48, featuring a treble clef, a key signature of one sharp (F#), and a 2/4 time signature. The tempo is marked 'Marcia'.

49 (Title) LEAVE THE FLAG UP..... Repeat No. 41, "Mazel-Tof"..... 3/4 Min.

Musical notation for item 49, featuring a treble clef, a key signature of one sharp (F#), and a 2/4 time signature. The tempo is marked 'Marcia'.

50 (Title) A SOCIETY CIRCUS..... Irresistible (McKee)..... 3/4 Min.

Musical notation for item 50, featuring a treble clef, a key signature of one sharp (F#), and a 2/4 time signature. The tempo is marked 'Valse' and the dynamics are 'p'. Copyright information: 'Copp. 1916, by G. Ricordi & Co.'

51 (Action) DANCING STARTS..... Sweet Georgia Brown (Bernie)..... 1 1/2 Min.

Musical notation for item 51, featuring a treble clef, a key signature of one sharp (F#), and a 2/4 time signature. The tempo is marked 'Fox trot' and the dynamics are 'p'. Copyright information: 'Copp. 1925, by Jerome H. Remick & Co.'

52 (Title) PANSY DARWIN..... Swanee Butterfly (Donaldson)..... 1 Min.

Musical notation for item 52, featuring a treble clef, a key signature of one sharp (F#), and a 2/4 time signature. The tempo is marked 'Mod.to' and the dynamics are 'p'. Copyright information: 'Copp. 1925, by Jerome H. Remick & Co.'

53 (Action) MAN TRIES TO DUCK PANSY..... If You Knew Susie (DeSylva)..... 2 1/4 Min.

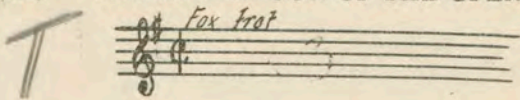
Musical notation for item 53, featuring a treble clef, a key signature of one sharp (F#), and a 2/4 time signature. The tempo is marked 'Fox trot' and the dynamics are 'p'. Copyright information: 'Copp. 1925, by Shapiro, Bernstein, & Co.'

54 (Title) I'M SORRY BUT YOU'LL HAVE TO..... Allegro Precipitoso (Savino)..... 2 1/4 Min.

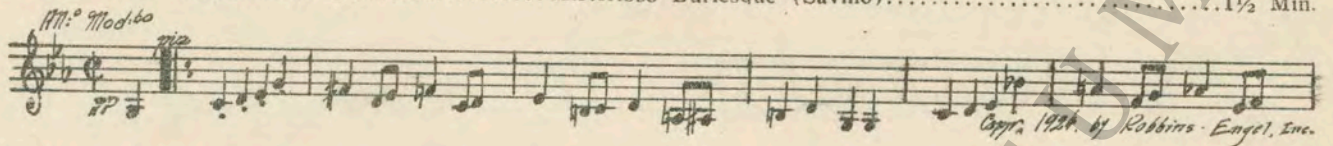
Musical notation for item 54, featuring a treble clef, a key signature of one sharp (F#), and a 2/4 time signature. The tempo is marked 'Allegro Precipitoso' and the dynamics are 'ff'. Copyright information: 'Copp. 1923, by G. Schirmer, Inc.'

The Afternoon of the Opening

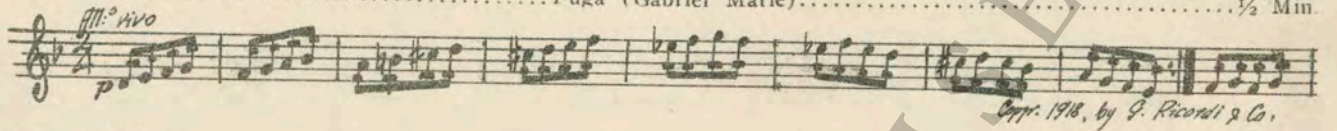
55 (Title) THE AFTERNOON OF THE OPENING..... Repeat Hines Theme No. 3.....2¼ Min.



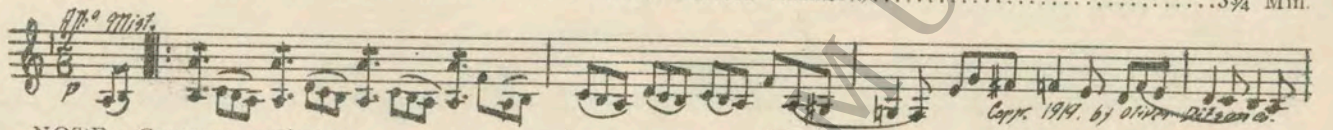
56 (Title) DOUGAN HAD MANAGED TO..... Misterioso Burlesque (Savino).....1½ Min.



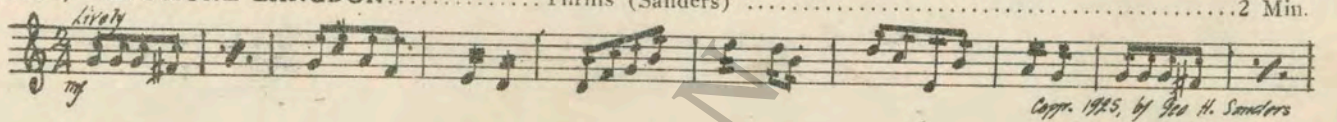
57 (Action) DOROTHY APPEARS IN CAR..... Fuga (Gabriel Marie).....½ Min.



58 (Title) JUST A MINUTE..... Mysterious Furioso (Langev).....3¾ Min.



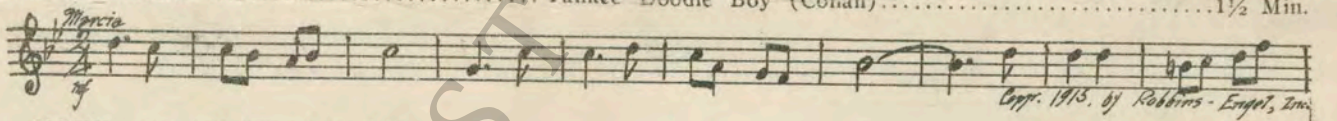
59 (Title) GREAT, I'LL PHONE LANGDON..... Thrills (Sanders)2 Min.



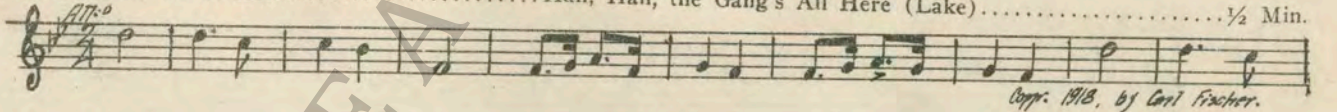
60 (Title) PHONE MY PALS..... Furioso No. 11 (Kiefert).....2 Min.



61 (Action) LANDS IN ROOM..... Yankee Doodle Boy (Cohan).....1½ Min.



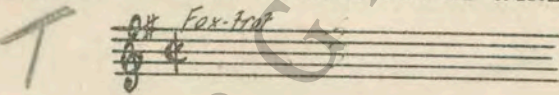
62 (Action) CIRCUS PALS APPEAR..... Hail, Hail, the Gang's All Here (Lake).....½ Min.



63 (Action) GANG AT HOUSE..... Hurry No. 33 (Minot).....1 Min.



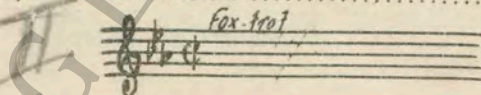
64 (Action) FIGHT OVER—CLIMBS OUT OF WINDOW... Repeat Hines Theme No. 3.....1 Min.



65 (Title) REMEMBER ONE WHISTLE..... There'll Be A Hot Time (Lake).....1 Min.



66 (Title) HOW ABOUT Repeat Girl Theme No. 9.....1 Min.



THE END

Country of Origin, U. S. A.

Complete Orchestrations and single parts of all compositions contained herein can be purchased from CAMEO MUSIC SERVICE CORPORATION, 112-118 West 44th Street, New York City

95:2017:1