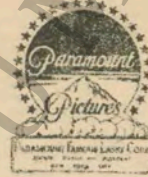


M. J. MINTZ (PATENT)
JULY 31, 1923.

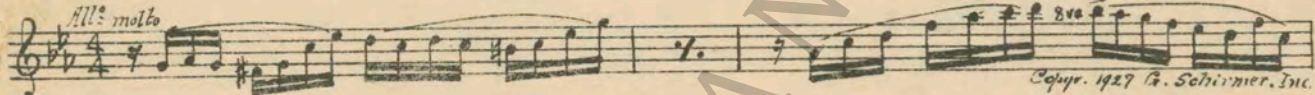


ADOLPH ZUKOR and JESSE L. LASKY
present
ESTHER RALSTON
in
"LOVE AND LEARN"

with
LANE CHANDLER
A Frank Tuttle Production
Story by Doris Anderson
Adaptation by Florence Ryerson
Screen play by Louise Long
B. P. Schulberg, Associate Producer
Compiled by James C. Bradford
Footage 5837 feet

Esther
A Paramount Picture

- 1 AT SCREENING Fantaisie-Improptu (Chopin) 2 3/4 Min

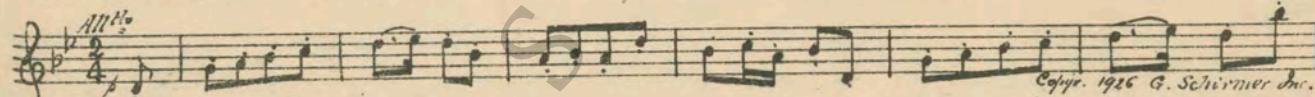
All^o molto

Copyright 1927 G. Schirmer, Inc.

- 2 (Action) WIFE PICKS UP BROKEN PEN Broken Dreams (Spitalny) 1 Min.

Lento

Copyright 1927 Sam Fox, Pub.

- 3 (Title) YOU KNOW YOU NEVER HAVE HAY
FEVER UNTIL Celebrated Canzonetta (Mendelssohn) 1/2 Min.

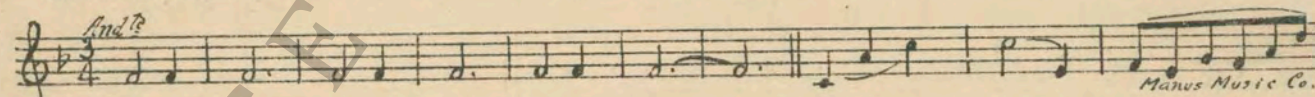
All^o

Copyright 1926 G. Schirmer, Inc.

- 4 (Action) NANCY APPEARS Polly (Zamecnik) 3/4 Min.

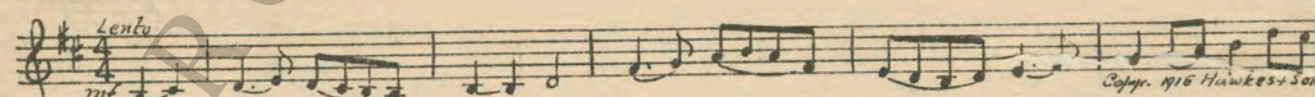
Mod^o

Copyright 1926 Sam Fox.

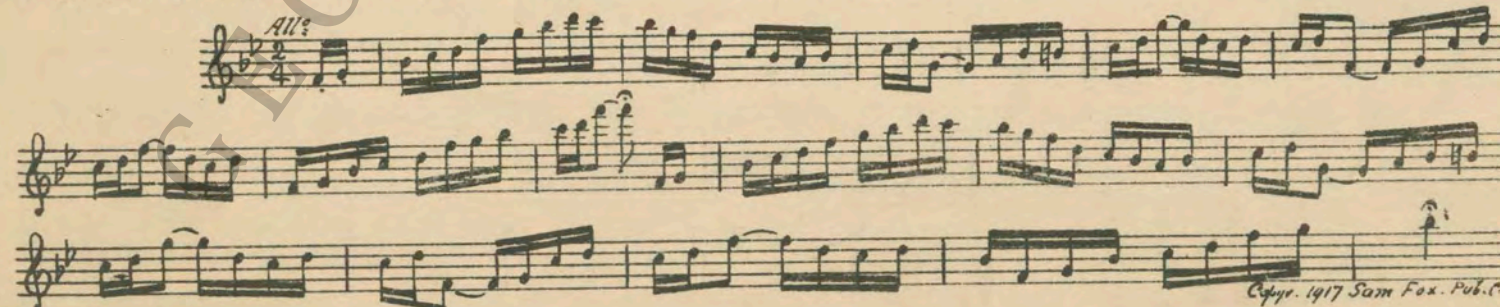
- 5 (Action) NANCY PICKS UP SEPARATION
AGREEMENT Apres L'Orage (Mouton) 2 Min.

And^{te}

Manus Music Co.

- 6 (Action) OLD SERVANT ENTERS ROOM A Keltic Lament (Foulds) 1 1/4 Min.

Lento
mf

Copyright 1916 Hawkes & Son.

- 7 (Action) NANCY LOOKING ABOUT NANCY THEME: Marionette (Arndt) 2 1/4 Min.

All^o

Copyright 1917 Sam Fox, Pub. Co.

8 (Action) NANCY STARTS OFF IN MOTOR CAR Oh Mister (Frey) 1 Min.

Musical notation for item 8: Treble clef, 2/4 time, key signature of one flat. Tempo marking: *All: mod^{to}*. Copyright: *Copyr. 1924 Robbins Music Co.*

9 (Title) MEANWHILE AN ELECTION The Wooden Soldiers' Tournament (Marquardt) 1½ Min.

Musical notation for item 9: Treble clef, 2/4 time, key signature of one flat. Tempo marking: *All: mod^{to}*. Copyright: *Copyr. 1927 Music Buyers Corp.*

10 (Action) NANCY APPEARS IN RACING AUTO By Wireless (Berge) ½ Min.

Musical notation for item 10: Treble clef, 2/4 time, key signature of one flat. Tempo marking: *Galop*. Copyright: *Copyr. 1925 Robbins Music Corp.*

NOTE: Catch crash as car crashes through boxes.
11 (Action) NANCY STOPS AUTO Repeat Nancy Theme No. 7 1½ Min.

Musical notation for item 11: Treble clef, 2/4 time, key signature of one flat. Tempo marking: *All:*

12 (Action) FATHER LEAVES ROOM Burlesque on Lange's Flower Song (Kempinski) 1 Min.

Musical notation for item 12: Treble clef, 6/8 time, key signature of one flat. Tempo marking: *Tempo di gal stuff*. Copyright: *Copyr. 1927 Belwin Inc.*

13 (Action) THEY SEE NANCY FROM WINDOW Comedy Excitement (Zamecnik) 1 Min.

Musical notation for item 13: Treble clef, 2/4 time, key signature of one flat. Tempo marking: *All:*. Copyright: *Copyr. 1927 Sam Fox Pub.*

14 (Action) JUDGE LOOKS IN MIRROR Ain't We Got Fun (Whiting) 3 Min.

Musical notation for item 14: Treble clef, 2/4 time, key signature of one flat. Tempo marking: *Jazz*. Copyright: *Copyr. 1921 Remick & Co.*

15 (Action) OFFICERS APPEAR Humpty Dumpty's Funeral March (Brandeis) 1½ Min.

Musical notation for item 15: Treble clef, 6/8 time, key signature of one flat. Tempo marking: *Mod^{to}*. Copyright: *Copyr. 1923 G. Schirmer, Inc.*

15 (Title) AND SO NANCY LEARNED The Dwarfs' Patrol (Rinaldi) 2 Min.

Musical notation for item 15: Treble clef, 2/4 time, key signature of one flat. Tempo marking: *All: mod^{to}*. Copyright: *Copyr. 1926 Hawkes & Son.*

17 (Action) NANCY TAKES STAND Forest Fancies (Haines) 2½ Min.

Musical notation for item 17: Treble clef, 2/4 time, key signature of one flat. Tempo marking: *All:to*. Copyright: *Copyr. 1924 Hawkes & Son.*

18 (Title) CASE DISMISSED I Wonder (Davis) ¾ Min.

Musical notation for item 18: Treble clef, 3/4 time, key signature of one flat. Tempo marking: *Valse*. Copyright: *Copyr. 1928 Irving Berlin Inc.*

19 (Action) NANCY TAKES GUN FROM OFFICER'S
HOLSTER Eccitamento (Retlaw) 2¼ Min.

Musical notation for item 19: Treble clef, 2/4 time, key signature of one flat. Tempo marking: *All: agitato*. Copyright: *Copyr. Sonnetmann Music Co.*

NOTE: Produce effect of pistol shots.

20 (Title) STONE WALLS DO NOT A PRISON MAKE... Toddling (Rapee-Axt)1¼ Min.

Musical notation for item 20, featuring a treble clef, a key signature of one sharp (F#), and a 2/4 time signature. The tempo marking is *Rolling*. The music consists of a single melodic line with eighth and sixteenth notes. Copyright notice: *copyr 1968 Robbins music corp.*

21 (Action) JUDGE AND MANAGER TALKINGL'Amour Valsant (Kirk)1¼ Min.

Musical notation for item 21, featuring a treble clef, a key signature of one sharp (F#), and a 3/4 time signature. The tempo marking is *Valse*. The music consists of a single melodic line with eighth and sixteenth notes. Copyright notice: *copyr 1924 Feature Music co*

22 (Action) FLASH-BACK TO JAILMarche Burlesque (Gillet)½ Min.

Musical notation for item 22, featuring a bass clef, a key signature of one flat (Bb), and a 2/4 time signature. The tempo marking is *Un poco allegrement*. The music consists of a single melodic line with eighth and sixteenth notes. Copyright notice: *Manus Music co.*

23 (Action) JUDGE ENTERS CELLTo a Tear from "Three Little Tone Poems" (Jay).....1½ Min.

Musical notation for item 23, featuring a treble clef, a key signature of one flat (Bb), and a 2/4 time signature. The tempo marking is *And^{te}*. The music consists of a single melodic line with eighth and sixteenth notes. Copyright notice: *copyr 1927 H. Baron.*

24 (Title) GOODBYELOVE THEME: Together (Henderson)¾ Min.

Musical notation for item 24, featuring a treble clef, a key signature of one flat (Bb), and a 2/4 time signature. The tempo marking is *Mod^{to}*. The music consists of a single melodic line with eighth and sixteenth notes.

Musical notation for item 24, featuring a treble clef, a key signature of one flat (Bb), and a 2/4 time signature. The music consists of a single melodic line with eighth and sixteenth notes.

Musical notation for item 24, featuring a treble clef, a key signature of one flat (Bb), and a 2/4 time signature. The music consists of a single melodic line with eighth and sixteenth notes.

Musical notation for item 24, featuring a treble clef, a key signature of one flat (Bb), and a 2/4 time signature. The music consists of a single melodic line with eighth and sixteenth notes, including first and second endings. Copyright notice: *copyr 1928 De Sylva Brown & Henderson.*

25 (Title) YOU REALY MEAN YOU'RE GOING TO WEAR THISAdventure d'Amour (Bradford)2¼ Min.

Musical notation for item 25, featuring a treble clef, a key signature of one flat (Bb), and a 3/8 time signature. The tempo marking is *All^o Agitato*. The music consists of a single melodic line with eighth and sixteenth notes. Copyright notice: *copyr 1927 Robbins music corp.*

26 (Action) FATHER AND MOTHER WORRIEDLa Rancon du Bonheur (Gabriel Marie)¾ Min.

Musical notation for item 26, featuring a treble clef, a key signature of one flat (Bb), and a 2/4 time signature. The tempo marking is *All^o Vivos*. The music consists of a single melodic line with eighth and sixteenth notes. Copyright notice: *Manus music co.*

27 (Title) IN A ROOM IN THE JUDGE'S HOTEL.....Razzing Theme (Rapee)1 Min

Musical notation for item 27, featuring a treble clef, a key signature of one flat (Bb), and a 2/4 time signature. The tempo marking is *Mod^{to} gva.*. The music consists of a single melodic line with eighth and sixteenth notes. Copyright notice: *copyr 1927 Bellwin Inc.*

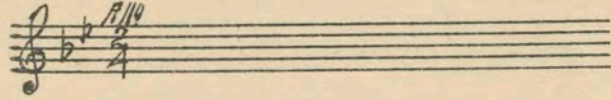
28 (Title) BY THE WAY, I SAWFlocons de Neige (Bradford)3¾ Min.

Musical notation for item 28, featuring a treble clef, a key signature of one sharp (F#), and a 2/4 time signature. The tempo marking is *All^o Jucoso*. The music consists of a single melodic line with eighth and sixteenth notes. Copyright notice: *copyr 1928 Robbins music corp*

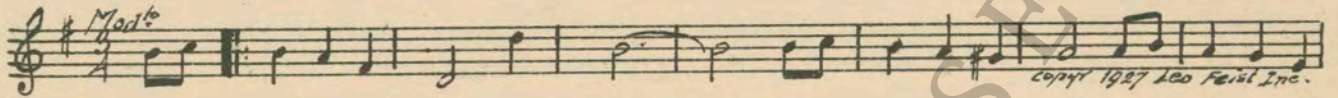
29 (Title) ILL GET MY TOILET ARTICLESRepeat No. 4 "Folly"2¼ Min.

Musical notation for item 29, featuring a treble clef, a key signature of one sharp (F#), and a common time (C) signature. The tempo marking is *Mod^{to}*. The music consists of a single melodic line with eighth and sixteenth notes.

30 (Title) THIS WON'T BE NEEDEDRepeat Nancy Theme No. 73 Min.



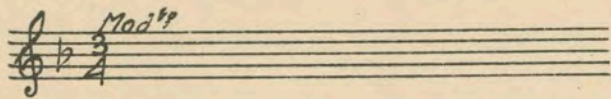
31 (Action) LIGHTS EXTINGUISHEDAre You Thinking of Me Tonight? (Gilbert).....½ Min.



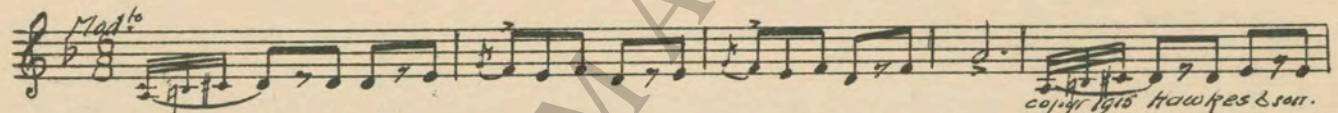
32 (Action) NANCY SCREAMSElopement (Carrozzini)2 Min.
NOTE: Play very quietly throughout sequence.



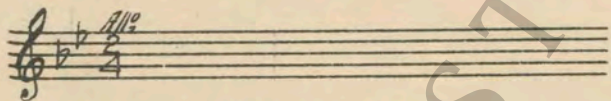
33 (Title) A WOMAN IS TRYING TO GET INTO YOUR ROOMRepeat Love Theme No. 241¼ Min.



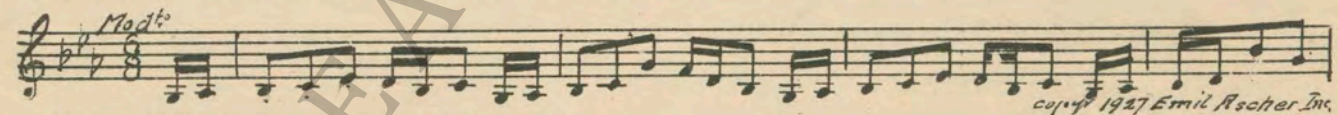
34 (Action) HALLWAYThe Hobbledehoy (Olsen)1¾ Min.



35 (Action) HOUSE DETECTIVES AT DOORRepeat Nancy Theme No. 71½ Min.



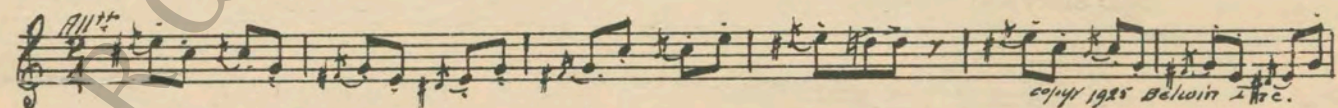
36 (Action) NANCY SEES MOTHER AND FATHER AT DOORDance of the Reapers (Humperdinck)½ Min.



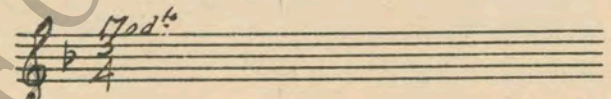
37 (Title) JUDGE, I'VE COME TO SEE YOU ABOUT MY DAUGHTERAllegro Scintillante (Kempinski)2 Min.



38 (Action) FATHER SNEEZESAnimal Cartoonix No. 2 (Aborn)½ Min.



39 (Action) INSERT—"YOUNGEST JUDGE"Repeat Love Theme No. 24½ Min.
NOTE: Catch sneezing effect ad lib.



THE END

Country of Origin, U. S. A.

Complete orchestrations and single piano parts of each separate number contained hereon, can be purchased from CAMEO MUSIC SERVICE CORPORATION, 315-317 WEST 47TH STREET, NEW YORK CITY.